

REPORT OF THE SECRETARY

1961

To the Board of Directors
The Institute of Radio Engineers, Inc.

Gentlemen: REPORT OF THE SECRETARY

The Secretary's Report for 1961 is transmitted herewith.

The IRE continues to increase its membership, the percentage for the year being 9. Two new Sections were established in other countries and the Section membership outside of North America increased 49 per cent. The Institute of Radio Engineers, Inc. to be noted in the International Convention attendance, although the number of exhibits and the number of exhibitors were greater than for the year before.

1 East 79 Street

New York 21, N. Y.

The statistics show that all departments functioned effectively. An effort was made to conserve members' time by reducing, where possible, duplications in meetings.

The new building on Fifth Avenue, New York City, was fully outfitted and occupied, thereby relieving a space shortage.

Respectfully submitted,

Haraden Pratt

REPORT OF THE SECRETARY

INDEX

REPORT OF THE SECRETARY

Page

SECTION A

1961

To the Board of Directors
The Institute of Radio Engineers, Inc.

Gentlemen:

The Secretary's Report for 1961 is transmitted herewith.

The IRE continues to increase its membership, the percentage for the year being 9. Two new Sections were established in other countries and the Section membership outside of North America increased 45 percent. A slight decrease, however, is to be noted in the International Convention attendance, although the number of exhibits and the number of papers presented were greater than for the year before.

The statistics show that all departments functioned effectively. An effort was made to conserve members' time by reducing, where possible, duplications in meetings.

The new building on Fifth Avenue, New York City, was fully outfitted and occupied, thereby relieving a space shortage.

Respectfully submitted,

Haraden Pratt

REPORT OF THE SECRETARY

INDEX

	<u>Page</u>
<u>SECTION A</u>	
Table 1 - 1961 Membership by Grade, by Percentage; 5-year Comparison	1
Table 2 - 1961 Geographical Membership Distribution by Grade; 5-year Comparison	1
Table 3 - 1961 Membership by Annual Dues Rate, by Grade	1
Table 4 - 1961 Membership by U. S. State, by Grade	2
Table 5 - 1961 Membership by Region, by Section, by Grade, by Dues Rate	3
Table 6 - 1961 Membership in Countries other than U. S., by Grade, by Country, by Dues Rate; 4-year Comparison	8
Table 7 - 1961 U. S. Possessions and Overseas Military Membership by Grade, by Dues Rate; 3-year Comparison	13
Table 8 - 1961 Life Members, by Grade; 3-year Comparison	13
Table 9 - 1961 Membership Changes by Grade	14
Table 10 - Membership by Grade, 1912-1961; Membership Graph, 1912-1961	15
Table 11 - 1961 Deceased Members	16
 <u>SECTION B</u>	
Table 1 - 1961 Professional Group Activities	17
Table 2 - 1961 National Technical Meetings	18
Table 3 - 1961 Professional Group Membership, by Group; 5-year Comparison	22
Table 4 - 1961 Affiliates by Group; 5-year Comparison	23
Table 5 - Percentage Changes in Group Membership, by Group; 2-year Comparison	24
Table 6 - 1961 Professional Group Chapters, by Group	25
Table 7 - 1961 Professional Group Membership by Group, by Region, by Section	29
 <u>SECTION C</u>	
Table 1 - IRE International Convention Statistics	33
 <u>SECTION D</u>	
Table 1 - 1961 Editorial Department Activities	34
 <u>SECTION E</u>	
Table 1 - 1961 Technical Department Activities	36
 <u>SECTION F</u>	
Table 1 - 1961 Section and Subsection Meetings and Membership by Region, by Section; 1-year Comparison	40
Table 2 - 1961 Professional Group Chapter Meetings by Section, by Group; 1-year Comparison	44
Table 3 - 1961 Section and Subsection Publications	50
 <u>SECTION G</u>	
Table 1 - 1961 Student Branches and Branch Membership, by Region, by Section	51
 <u>SECTION H</u>	
Table 1 - 1961 Summary of Income and Expenses	57
Table 2 - Balance Sheet, December 31, 1961	58

SECTION A

Table 1 - 1961 Membership by Grade, by Percentage;
5-year Comparison

<u>Grade</u>	<u>Total</u>	<u>Percentage</u>	<u>Total</u>	<u>Percentage</u>
Fellow (F)	964	1		
Senior Member (SM)	10,570	11		
Member (M)	52,284	54	63,818	66
Associate (A)	13,566	14	77,384	80
Student (S)	19,167	20	96,551	100

<u>Grade</u>	<u>December 31, 1961</u>		<u>December 31, 1960</u>		<u>December 31, 1959</u>		<u>Dec. 31, 1958</u>		<u>Dec. 31, 1957</u>	
	<u>No.</u>	<u>% of Total</u>	<u>No.</u>	<u>% of Total</u>	<u>No.</u>	<u>% of Total</u>	<u>No.</u>	<u>% of Total</u>	<u>No.</u>	<u>% of Total</u>
F	964	1	896	1	823	1	770	1	700	1
SM	10,570	11	10,001	11	9,463	12	8,536	12	7,685	12
M	52,284	54	47,114	53	38,977	49	32,373	45	26,115	40
A	13,566	14	12,806	15	13,165	17	14,721	21	16,827	26
S	19,167	20	17,662	20	16,738	21	14,961	21	13,446	21
Totals	96,551		88,479		79,166		71,361		64,773	

Table 2 - Geographical Membership Distribution
by Grade; 5-year Comparison

	<u>F</u>	<u>SM</u>	<u>M</u>	<u>A</u>	<u>S</u>	<u>Total</u>
U. S.	873	9,664	48,460	11,813	17,456	88,266
U. S. Possessions	1	6	41	14	20	82
U. S. Overseas						
Military	1	35	436	110	26	608
	875	9,705	48,937	11,937	17,502	88,956
Canada	28	247	1,610	774	1,099	3,758
Other Countries	61	618	1,737	855	566	3,837
Totals	964	10,570	52,284	13,566	19,167	96,551
		<u>1961</u>	<u>1960</u>	<u>1959</u>	<u>1958</u>	<u>1957</u>
Total		96,551	88,479	79,166	71,361	64,773
U. S. and Possessions		88,956	81,634	73,044	65,786	59,961
Other Countries (incl. Canada)		7,595	6,845	6,122	5,575	4,812
Percent Other Countries		7.9	7.7	7.7	7.8	7.4

Table 3 - 1961 Membership by Annual Dues Rate, by Grade

	<u>\$15.00</u>	<u>\$10.00</u>	<u>\$5.00</u>
Fellow	956	8	
Senior Member	9,395	1,175	
Member	33,352	18,932	
Associate	8,147	5,419	
Student			19,167
	<u>51,850</u>	<u>25,534</u>	<u>19,167</u>

Table 4 - 1961 Membership by U. S. State/by Grade

SECTION A

State	Fellow	Senior Member	Member	Associate	Student	Total
Alabama	-	30	336	97	209	672
Alaska	-	10	79	39	13	141
Arizona	10	121	676	116	184	1,107
Arkansas	2	10	42	18	66	138
California	139	2,061	10,304	1,992	2,335	16,831
Colorado	6	87	473	119	173	858
Connecticut	15	155	784	210	218	1,382
Delaware	-	6	79	8	27	120
District of Columbia	36	205	661	100	203	1,205
Florida	28	229	1,281	342	240	2,120
Georgia	2	28	190	62	156	438
Hawaii	-	12	88	48	42	190
Idaho	-	2	41	5	40	88
Illinois	24	324	1,618	756	907	3,629
Indiana	6	114	508	160	486	1,274
Iowa	6	87	421	81	199	794
Kansas	1	25	247	66	146	485
Kentucky	2	37	160	40	104	343
Louisiana	1	22	114	40	121	298
Maine	1	5	48	13	39	106
Maryland	36	553	2,208	428	469	3,694
Massachusetts	72	633	3,430	741	1,172	6,048
Michigan	16	109	816	215	421	1,577
Minnesota	5	52	623	100	179	959
Mississippi	-	9	77	25	134	245
Missouri	5	76	465	135	406	1,087
Montana	-	4	29	7	43	83
Nebraska	-	24	140	39	152	355
Nevada	-	9	67	15	26	117
New Hampshire	1	34	199	44	60	338
New Jersey	187	1,161	4,504	964	997	7,813
New Mexico	2	108	560	145	192	1,007
New York	145	1,550	7,939	2,170	2,581	14,365
North Carolina	1	58	403	102	127	691
North Dakota	-	1	21	8	82	112
Ohio	22	344	1,462	574	808	3,210
Oklahoma	2	36	260	89	102	489
Oregon	2	30	167	56	167	422
Pennsylvania	48	497	2,176	557	1,059	4,337
Rhode Island	-	20	108	30	54	212
South Carolina	1	14	98	31	73	217
South Dakota	-	2	22	8	59	91
Tennessee	2	21	154	35	126	338
Texas	18	333	1,682	406	782	3,221
Utah	1	14	157	15	236	423
Vermont	-	7	34	11	32	84
Virginia	17	267	1,211	268	268	2,031
Washington	7	66	851	137	324	1,385
West Virginia	-	4	43	26	41	114
Wisconsin	4	55	378	112	333	882
Wyoming	-	3	26	8	43	80
TOTALS	873	9,664	48,460	11,813	17,456	88,266

Table 5 - 1961 Membership by Region, By Section, By Grade, By Dues Rate

SECTION A

REGION 1 Section	F		SM		M		A		Student	Sub- Total	Section Total
	\$15	\$15	\$10	\$15	\$10	\$15	\$10	\$5			
Binghamton	-	22	9	222	134	33	33	86	-	-	539
Boston	68	513	76	1,985	1,095	397	272	1,091	5,497	6,477	
Merrimack Valley	3	60	7	216	151	53	29	135	654	-	
New Hampshire	1	26	2	112	62	16	24	17	260	-	
No. Vermont	-	4	-	13	10	4	3	32	66	-	
Buffalo-Niagara	1	49	7	206	117	42	37	40	-	499	
Connecticut	8	47	6	251	145	57	51	158	723	1,389	
Fairfield County	10	92	13	249	140	61	41	60	666	-	
Elmira-Corning	2	19	4	68	36	11	9	95	-	244	
Erie	1	6	1	23	10	8	2	9	-	60	
Ithaca	2	18	3	57	46	5	3	96	-	230	
Rochester	3	64	3	231	105	51	41	131	-	629	
Rome-Utica	-	59	9	234	152	47	43	60	-	604	
Schenectady	14	76	8	141	65	16	18	158	-	496	
Syracuse	17	149	25	520	255	64	50	113	-	1,193	
Western Mass.	2	18	2	92	84	26	12	76	-	312	
Totals	132	1,222	175	4,620	2,607	891	668	2,357		12,672	

REGION 2 Section	F		SM		M		A		Student	Sub- Total	Section Total
	\$15	\$15	\$10	\$15	\$10	\$15	\$10	\$5			
Long Island	49	534	37	1,973	756	512	312	707	-	4,880	
New York	42	248	16	885	547	323	251	982	3,294	5,826	
Catskill	-	7	3	113	47	23	8	18	219	-	
Mid-Hudson	1	27	3	307	191	63	28	29	649	-	
Monmouth	18	116	17	274	138	70	22	48	703	-	
Westchester	13	119	13	394	161	111	49	101	961	-	
No. New Jersey	104	608	35	1,632	686	385	200	601	-	4,251	
Princeton	50	143	7	306	158	66	41	139	-	910	
Totals	277	1,802	131	5,884	2,684	1,553	911	2,625		15,867	

Table 5 - 1961 Membership by Region, By Section, By Grade, By Dues Rate (Continued)

SECTION A

REGION 3 Section	F			M		A		Student \$5	Sub- Total	Section Total
	\$15	\$15	\$10	\$15	\$10	\$15	\$10			
Atlanta	3	40	5	191	96	45	32	463	-	875
Baltimore	16	209	36	713	439	125	73	235	-	1,846
Canaverl	4	55	11	239	138	60	30	14	-	556
Florida West Coast	9	53	3	172	95	67	22	20	-	441
Gainesville	1	20	2	56	19	14	4	125	-	241
Huntsville	-	21	7	163	126	36	16	228	597	787
Memphis	-	2	-	15	14	8	5	51	95	-
Nashville	2	6	-	24	12	2	2	47	95	-
Miami	4	32	3	99	25	28	27	80	298	350
Palm Beach	1	3	1	24	14	3	2	4	52	-
Mobile	-	-	1	24	32	2	8	12	-	79
North Carolina	1	34	4	174	126	41	15	31	426	700
East.No. Carolina	-	14	2	31	37	16	12	90	202	-
West.No. Carolina	-	5	-	25	13	12	6	11	72	-
Northwest Florida	-	7	-	62	39	13	14	14	149	188
Panama City	-	4	-	21	11	-	3	-	39	-
Orlando	4	46	9	175	96	40	20	15	-	405
Philadelphia	44	496	53	1,881	1,056	353	205	626	4,714	5,243
Lancaster	3	33	1	71	42	22	9	19	200	-
Lehigh Valley	1	21	1	46	42	6	5	122	244	-
Reading	-	5	-	33	14	15	9	9	85	-
South Carolina	1	13	1	61	37	14	17	88	-	232
Virginia	4	46	3	223	155	40	30	163	-	664
Washington, D. C.	69	591	75	1,548	733	339	187	423	-	3,965
Totals	167	1,756	218	6,071	3,411	1,301	753	2,890		16,567

REGION 4 Section	F			M		A		Student \$5	Sub- Total	Section Total
	\$15	\$15	\$10	\$15	\$10	\$15	\$10			
Akron	4	22	6	116	56	44	13	85	-	346
Central Penn.	2	36	1	71	45	8	5	114	-	282
Cincinnati	5	47	5	171	56	33	22	76	-	415
Cleveland	4	59	6	195	95	64	46	163	-	632
Columbus	2	40	6	143	100	34	19	148	-	492
Dayton	7	134	9	296	170	96	167	188	-	1,067
Detroit	16	89	16	446	258	128	51	355	-	1,359
Emporium	1	48	1	45	23	13	9	13	-	153
Pittsburgh	13	63	8	269	156	86	39	305	-	939
Toledo	-	10	-	60	16	18	9	73	-	186
Western Michigan	-	7	1	41	20	22	16	54	-	161
Williamsport	-	3	2	19	9	6	4	16	-	59
Totals	54	558	61	1,872	1,004	552	400	1,590		6,091

SECTION A

Table 5 - 1961 Membership By Region, By Section, By Grade, By Dues Rate (Continued)

REGION 5 Section	F		SM		M		A		Student	Sub- Total	Section Total
	\$15	\$10	\$15	\$10	\$15	\$10	\$15	\$10	\$5		
Cedar Rapids	5	1	65	6	208	148	47	24	185	689	721
Burlington	-	-	1	-	14	11	1	4	1	32	-
Chicago	24	-	302	29	1,002	574	383	361	909	-	3,584
Evansville- Owensboro	1	-	34	1	53	38	14	8	26	-	175
Fort Wayne	2	-	27	-	93	29	26	7	63	-	247
Indianapolis	4	-	58	1	158	138	39	28	249	-	675
Louisville	1	-	4	2	37	42	13	11	95	-	205
Milwaukee	4	-	28	10	214	151	72	50	448	-	977
Omaha- Lincoln	-	-	39	2	75	74	21	27	159	-	397
South Bend- Mishawaka	-	-	23	10	91	44	19	11	21	-	219
Twin Cities	5	-	44	11	382	308	70	53	359	-	1,232
Totals	46	1	625	72	2,327	1,557	705	584	2,515	-	8,432

REGION 6 Section	F		SM		M		A		Student	Sub- Total	Section Total
	\$15	\$10	\$15	\$10	\$15	\$10	\$15	\$10	\$5		
Beaumont - Port Arthur	-	-	6	-	26	13	18	9	73	-	145
Dallas	11	-	133	27	479	348	69	52	152	-	1,271
Denver	6	-	79	8	269	188	84	39	213	886	945
Pikes Peak	-	-	3	2	30	15	4	2	3	59	-
El Paso	-	-	8	-	50	54	18	19	18	167	294
Las Cruces	-	-	6	1	29	32	14	5	40	127	-
Fort Worth	-	-	37	2	154	81	34	22	100	-	430
Houston	3	-	71	5	190	98	67	45	206	-	685
Kansas City	2	-	46	5	163	100	67	39	264	-	686
Little Rock	2	-	10	-	24	18	8	10	66	-	138
Lubbock	-	-	2	-	21	22	13	9	43	-	110
New Orleans	1	-	16	2	61	76	17	26	114	-	313
Oklahoma City	-	-	14	3	105	64	24	20	93	-	323
St. Louis	4	-	44	10	222	144	58	24	275	-	781
San Antonio	4	-	38	5	116	71	25	20	194	-	473
Shreveport	-	-	11	-	19	12	12	5	21	-	80
Tulsa	2	-	20	-	73	22	35	11	9	-	172
Wichita	-	-	3	-	64	60	27	5	34	-	193
Totals	35	-	547	70	2,095	1,418	594	362	1,918	-	7,039

SECTION A

Table 5 - 1961 Membership By Region, By Section, By Grade, By Dues Rate (Continued)

REGION 7 Section	F	SM		M		A		Student	Sub- Total	Section Total
	\$15	\$15	\$10	\$15	\$10	\$15	\$10	\$5		
Alamogordo-	-	11	-	38	36	11	16	2	-	114
Holloman	-	-	-	-	-	-	-	-	-	-
Albuquerque-	2	85	4	254	119	39	43	155	-	701
Los Alamos	-	-	-	-	-	-	-	-	-	-
Anchorage	-	7	3	42	37	22	17	14	-	142
China Lake	-	6	1	46	49	13	3	3	-	121
Fort Huachuca	1	20	-	36	24	8	3	7	-	99
Hawaii	-	12	-	61	27	34	14	44	-	192
Las Vegas	-	1	3	19	37	5	10	7	-	82
Los Angeles	7	197	31	977	558	227	126	459	2,582	10,352
Buenaventura	-	23	3	97	46	21	10	11	211	-
Crescent Bay	19	291	32	669	324	95	58	142	1,630	-
Orange Belt	5	86	6	287	175	47	28	151	785	-
Pasadena	9	98	9	303	138	72	28	132	789	-
San Fernando	12	244	30	863	355	160	63	142	1,869	-
Santa Ana	6	190	28	765	580	144	94	175	1,982	-
Santa Barbara	6	51	8	155	101	28	26	129	504	-
Phoenix	8	60	7	307	170	55	30	95	-	732
Portland	4	29	1	109	62	30	27	171	-	433
Sacramento	1	18	2	80	82	36	15	45	-	279
Salt Lake City	1	15	1	100	93	16	3	244	-	473
San Diego	4	100	10	473	213	101	37	103	-	1,041
San Francisco	55	478	49	1,756	874	307	177	568	4,264	5,046
East Bay	13	60	10	204	146	53	22	274	782	-
Seattle	6	63	4	454	369	75	49	346	1,366	1,505
Richland	-	5	-	36	23	10	10	55	139	-
Tucson	2	30	5	90	51	15	6	87	-	286
Totals	161	2,180	247	8,221	4,689	1,624	915	3,561		21,598

SECTION A

Table 5 - 1961 Membership By Region, By Section, By Grade, By Dues Rate (Continued)

REGION 8 Section	F		SM		M		A		Student \$5	Sub- Total	Section Total
	\$15	\$10	\$15	\$10	\$15	\$10	\$15	\$10			
Bay of Quinte	-	-	10	1	30	21	7	13	38	-	120
Hamilton	-	-	11	-	41	8	20	23	27	-	130
Kitchener- Waterloo	-	-	9	-	21	13	15	12	13	-	83
London	-	-	7	1	27	18	13	8	29	103	149
Southwest Ontario	-	-	1	-	10	4	8	6	17	46	-
Montreal	-	7	62	3	251	162	73	57	147	-	762
Newfoundland	-	-	-	-	10	3	4	3	-	-	20
Northern Alberta	-	-	3	-	31	10	24	20	112	-	200
Ottawa	12	-	54	11	188	101	41	59	71	-	537
Quebec	-	-	2	-	43	24	10	12	80	-	171
Regina	-	-	1	1	17	12	10	8	74	-	123
Southern Alberta	-	-	1	-	31	8	15	18	94	-	167
Toronto	6	-	43	5	240	92	80	106	191	-	763
Vancouver	1	-	12	1	56	47	47	25	146	335	364
Victoria	-	-	-	-	5	15	-	7	2	29	-
Winnipeg	2	-	7	1	37	34	15	15	58	-	169
Totals	21	7	223	24	1,038	572	382	392	1,099		3,758

Sections in Other Countries	F		SM		M		A		Student \$5	Sub- Total	Section Total
	\$15	\$10	\$15	\$10	\$15	\$10	\$15	\$10			
Benelux	4	-	29	27	39	47	5	13	21	-	185
Buenos Aires	2	-	18	-	25	28	19	14	122	-	228
Chile	-	-	2	2	1	5	2	10	23	-	45
Colombia	-	-	3	2	17	12	3	8	38	-	83
Egypt	-	-	4	1	14	7	1	2	9	-	38
France	6	-	42	7	53	18	30	10	2	-	168
Geneva	4	-	21	5	48	25	19	7	5	-	134
India	1	-	32	1	80	60	23	25	5	-	227
Israel	1	-	5	-	34	29	17	10	-	-	96
Italy	-	-	12	5	24	96	54	62	142	-	395
Rio de Janeiro	1	-	5	1	17	9	7	8	7	-	55
Tokyo	6	-	61	11	76	81	69	31	78	-	413
Totals	25		234	62	428	417	249	200	452		2,067

SECTION A. Table 6 - 1961 Membership in Countries other than U. S., by Grade, by Country, by Dues Rate; Four-Year Comparison

Country	Fellow		Sen. Mem.		Member		Associate		Student	Total
	\$15	\$10	\$15	\$10	\$15	\$10	\$15	\$10		
Aden									1	1
Algeria				1					3	4
Antilles			1						1	2
Argentina	2		18		25	28	19	14	122	228
Ascension Island					1					1
Austria			1		2	2			1	6
Australia	1		20	6	39	19	15	5	7	112
Bahamas					3			2		5
Belgium	1		6	3	14	11	2	4	3	44
Bermuda			1		2		1			4
Brazil	1		8	1	41	22	20	37	19	149
British Guiana					1		1			2
British W. Indies					5	3	3	1		12
Burma					4	3		1		8
Canada	21	7	223	24	1038	572	382	392	1099	3758
Ceylon					1	1	1		2	5
Chile			2	2	1	5	2	10	23	45
Colombia			3	2	17	12	3	8	38	83
Costa Rica					1		2			3
Cuba					1		1	2		4
Cyprus					1					1
Czechoslovakia					5		4	3		12
Denmark	1		4	3	24	22	14	3	19	90
Ecuador			3		5	1				9
Egypt			4	1	14	7	1	2	9	38
El Salvador					1	2				3
England	23		97	14	195	124	48	25	35	561
Ethiopia					5		1			6
Fiji Islands					1			1		2

SECTION A. Table 6 - 1961 Membership in Countries other than U. S., by Grade, by Country,
by Dues Rate; Four-year Comparison (continued)

Country	Fellow		Sen. Mem.		Member		Associate		Student	Total
	\$15	\$10	\$15	\$10	\$15	\$10	\$15	\$10		
Finland					2	1	1	2		6
Formosa					4	1		2		7
France	6		42	7	53	18	30	10	2	168
Germany	6		31	10	24	21	12	8	4	116
Greece			2	1	11	4	5	4		27
Guatemala						2				2
Haiti						1		1		2
Hong Kong					11	7	4	3		25
Hungary				2				1		3
Iceland					1	2	1			4
India	1		32	1	80	60	23	25	5	227
Indonesia			1	1	1	1				4
Iran			1		3		1			5
Iraq					2	1				3
Ireland			4	1	3	1	4		1	14
Israel	1		5		34	29	17	10		96
Italy			12	5	24	96	54	62	142	395
Japan	6		61	11	76	81	69	31	78	413
Jordan					1	1			1	3
Korea					2	2	1	2	2	9
Kuwait			1		1			1		3
Lebanon					7		2	2		11
Libya						1		2		3
Luxembourg						1				1
Malaya					6			2		8
Malta						1				1
Mexico	1			9	22	9	15	4	18	78
Morocco					1	1	1			3

SECTION A. Table 6 - 1961 Membership in Countries other than U. S. , by Grade, by Country,
by Dues Rate; Four-Year Comparison (continued)

Country	Fellow		Sen. Mem.		Member		Associate		Student	Total
	\$15	\$10	\$15	\$10	\$15	\$10	\$15	\$10		
Nepal									1	1
Netherlands	3		23	24	25	35	3	9	13	135
New Zealand			1	1	1	1	2	2		8
Nicaragua					1					1
Nigeria					2		1		1	4
Norway			3	2	13	2	4	6		30
Okinawa					1	3				4
Pakistan			4	1	6	8		1		20
Panama, Republic of					2		1	1		4
Paraguay			1							1
Peru			1		2	2	2	2		9
Philippine Islands					8	2	3			13
Poland			2		1		6			9
Portugal			2		3	1				6
Saudi Arabia					3	2			1	6
Scotland			2		10		5			17
Singapore					3	3		1		7
South Africa			4		21	6	7	2		40
Spain	1		1	1	5	1	1		12	22
Sudan				1						1
Sweden	3		8	42	17	41	9	51		171
Switzerland	4		21	5	48	25	19	7	5	134
Syria			1			2				3
Tasmania					1					1
Thailand					4	5	1			10
Turkey			1		4	3	2			10
Uruguay					2	1	2			5
U. S. S. R.			1	16			9			26
Venezuela			6		16	9	12	8	2	53

SECTION A. Table 6 - 1961 Membership in Countries other than U. S., by Grade, by Country, by Dues Rate; Four-Year Comparison (continued)

Country	Fellow		Sen. Mem.		Member		Associate		Student	Total
	\$15	\$10	\$15	\$10	\$15	\$10	\$15	\$10		
Vietnam					1					1
Wales					1			1		2
West Indies			1							1
Yugoslavia				1	1	1		2		5
Totals	82	7	666	199	2018	1329	850	779	1665	7595

Country	1961	1960	1959	1958	Country	1961	1960	1959	1958
Aden	1	0	0	1	Haiti	2	1	1	0
Algeria	4	1	1	0	Hong Kong	25	24	19	14
Antilles	2	3	0	0	Hungary	3	1	2	1
Arabia	0	0	0	6	Iceland	4	5	4	5
Argentina	228	171	110	117	India	227	199	174	174
Ascension Island	1	0	0	0	Indonesia	4	5	4	3
Austria	6	9	4	2	Iran	5	6	5	3
Australia	112	99	97	80	Iraq	3	4	2	3
Bahamas	5	5	0	2	Ireland	14	13	11	11
Belgium	44	39	24	27	Israel	96	90	80	64
Bermuda	4	4	4	6	Italy	395	222	152	91
Bolivia	0	1	1	1	Japan	413	369	308	274
Brazil	149	153	155	152	Jordan	3	3	1	1
British Guiana	2	2	2	0	Korea	9	7	6	6
British W. Indies	12	12	12	16	Kuwait	3	3	2	2
Burma	8	8	11	9	Lebanon	11	14	13	10
Canada	3758	3632	3377	3057	Libya	3	5	7	3
Ceylon	5	3	4	3	Luxembourg	1	0	0	0
Chile	45	18	12	8	Malaya	8	9	8	8
China	0	2	2	0	Malta	1	2	1	1
Colombia	83	39	26	30	Mexico	78	60	58	66
Congo	0	0	1	0	Morocco	3	2	4	3
Costa Rica	3	3	2	2	Nepal	1	0	0	0
Cuba	4	18	26	26	Netherlands	135	107	64	52
Curacao	0	0	0	1	New Zealand	8	6	5	6
Cyprus	1	1	0	1	Nicaragua	1	2	2	0
Checkoslovakia	12	11	11	9	Nigeria	4	1	0	1
Denmark	90	89	85	84	Norway	30	30	23	26
Dominican Rep.	0	1	1	2	Nyasaland	0	1	0	0
Dutch Guiana	0	0	0	1	Okinawa	4	2	2	1
Ecuador	9	7	6	6	Pakistan	20	17	15	21
Egypt	38	28	23	26	Panama, Republic of	4	3	2	2
El Salvador	3	4	3	1	Paraguay	1	1	0	0
England	561	485	438	419	Peru	9	13	9	8
Ethiopia	6	6	3	4	Philippine Islands	13	13	17	15
Fiji Islands	2	1	1	1	Poland	9	10	10	9
Finland	6	4	3	1	Portugal	6	7	8	6
Formosa	7	5	5	5	Qatar	0	1	0	0
France	168	156	152	136	Romania	0	2	1	2
French W. Indies	0	1	0	0	Saudi Arabia	6	3	4	0
Germany	116	91	71	75	Scotland	17	16	17	17
Gibraltar	0	1	0	0	Singapore	7	8	7	4
Greece	27	19	18	27	South Africa	40	35	39	38
Guatemala	2	3	3	2					

(cont'd)

SECTION A. Table 6 - 1961 Membership in Countries other than U. S. , by Grade, by Country, by Dues Rate; Four-Year Comparison (continued)

Country	1961				1960				1959				1958			
	SM	SM	SM	SM	SM	SM	SM	SM	SM	SM	SM	SM	SM	SM	SM	
Spain	22	20	16	15												
Sudan	1	1	1	0												
Sweden	171	145	118	102												
Switzerland	134	107	97	79												
Syria	3	1	1	0												
Tahiti	0	1	1	1												
Tanganyika	0	0	0	1												
Tasmania	1	1	1	1												
Thailand	10	9	7	6												
Tunisia					0	1	0	0								
Turkey					10	6	10	9								
Uruguay					5	6	4	4								
U. S. S. R.					26	26	26	10								
Venezuela					53	57	52	48								
Vietnam					1	0	1	0								
Wales					2	2	3	1								
West Indies					1	1	2	0								
Yugoslavia					5	4	1	1								

GAINS

Year	Total	Gain
1961	7,595	750
1960	6,845	723
1959	6,112	547
1958	5,575	763

Table 8 - 1961 Life Members, by Grades; 3-year Comparison

	U. S.	Canada	Other	Total
Fellow	108	1	7	116
Senior Member	80	1	8	91
Member	52	1	4	57
Associate	4	1	1	6
	244	4	20	268
	1959	207		
	1960	204		
	1961	244		

Section A - Table 7 - 1961 U. S. Possessions and Overseas Military Membership by Grade, by Dues Rate; 3-year comparison

U. S. Possessions	F		SM		M		A		S	Totals
	\$15	\$10	\$15	\$10	\$15	\$10	\$15	\$10	\$5	
Canal Zone	-	-	-	-	1	3	3	-	-	7
Guam	-	-	-	-	-	2	-	-	-	2
Marianas Islands	-	-	-	-	-	-	-	-	-	-
Puerto Rico	1	-	6	-	18	16	7	3	20	71
Virgin Islands	-	-	-	-	-	-	-	-	-	-
Wake Island	-	-	-	-	-	1	1	-	-	2
Caroline Islands	-	-	-	-	-	-	-	-	-	-
Totals	1		6		19	22	11	3	20	82

	1959	1960	1961
Canal Zone	5	5	7
Guam	-	3	2
Marianas Islands	2	-	0
Puerto Rico	68	85	71
Virgin Islands	2	-	0
Wake Island	-	-	2
Caroline Islands	1	-	0
Totals	78	93	82

Overseas Military	F		SM		M		A		S	Totals
	\$15	\$10	\$15	\$10	\$15	\$10	\$15	\$10	\$5	
P. O. San Francisco	-	-	9	-	87	93	33	18	18	258
P. O. Seattle	-	-	-	-	2	2	-	1	2	7
P. O. New York	1	-	24	2	136	116	33	25	6	343
Totals	1	-	33	2	225	211	66	44	26	608

	1959	1960	1961
P. O. San Francisco	189	194	258
P. O. Seattle	-	1	7
P. O. New York	304	348	343
Totals	493	543	608

Table 8 - 1961 Life Members, by Grade; 3-year Comparison

	U. S.	Canadian	Other	Total
Fellow	108	1	7	116
Senior Member	80	3	8	91
Member	52	2	4	58
Associate	4	-	3	7
	<u>244</u>	<u>6</u>	<u>22</u>	<u>272</u>
	1959	-	203	
	1960	-	224	
	1961	-	272	

Section A - Table 9 - 1961 Membership Changes, by Grade

<u>GAINS</u>	<u>F</u>	<u>SM</u>	<u>M</u>	<u>A</u>	<u>S</u>	<u>TOTAL</u>
Elections	-	432	3,151	1,033	9,892	14,508
Reinstatements	-	121	1,092	424	454	2,091
Transfers to	<u>76</u>	<u>369</u>	<u>3,505</u>	<u>759</u>	-	<u>4,709 *</u>
TOTAL GAIN	76	922	7,748	2,216	10,346	21,318
 <u>LOSSES</u>						
New Elections (Unpaid)	-	6	88	24	-	118
Transfers from	-	74	321	424	3,890	4,709 *
Voided Elections	-	-	11	25	-	36
Deceased	7	36	66	31	6	146
Resignations	-	63	523	351	562	1,499
Delinquents	<u>1</u>	<u>174</u>	<u>1,568</u>	<u>601</u>	<u>4,383</u>	<u>6,728</u>
TOTAL LOSS	8	353	2,578	1,456	8,841	13,246
 <u>NET GAIN</u>	 <u>68</u>	 <u>569</u>	 <u>5,170</u>	 <u>760</u>	 <u>1,505</u>	 <u>8,072</u>

The net gain of 8,072 shown above compares with 9,313 for 1960.

* - Analysis of Transfers, by Grade

<u>Transfers from</u>	<u>SM</u>	<u>M</u>	<u>A</u>	<u>S</u>	<u>TOTAL</u>
Transfers to F	74	2	-	-	76
Transfers to SM	-	319	50	-	369
Transfers to M	-	-	374	3,131	3,505
Transfers to A	-	-	-	<u>759</u>	<u>759</u>
TOTAL	74	321	424	3,890	4,709

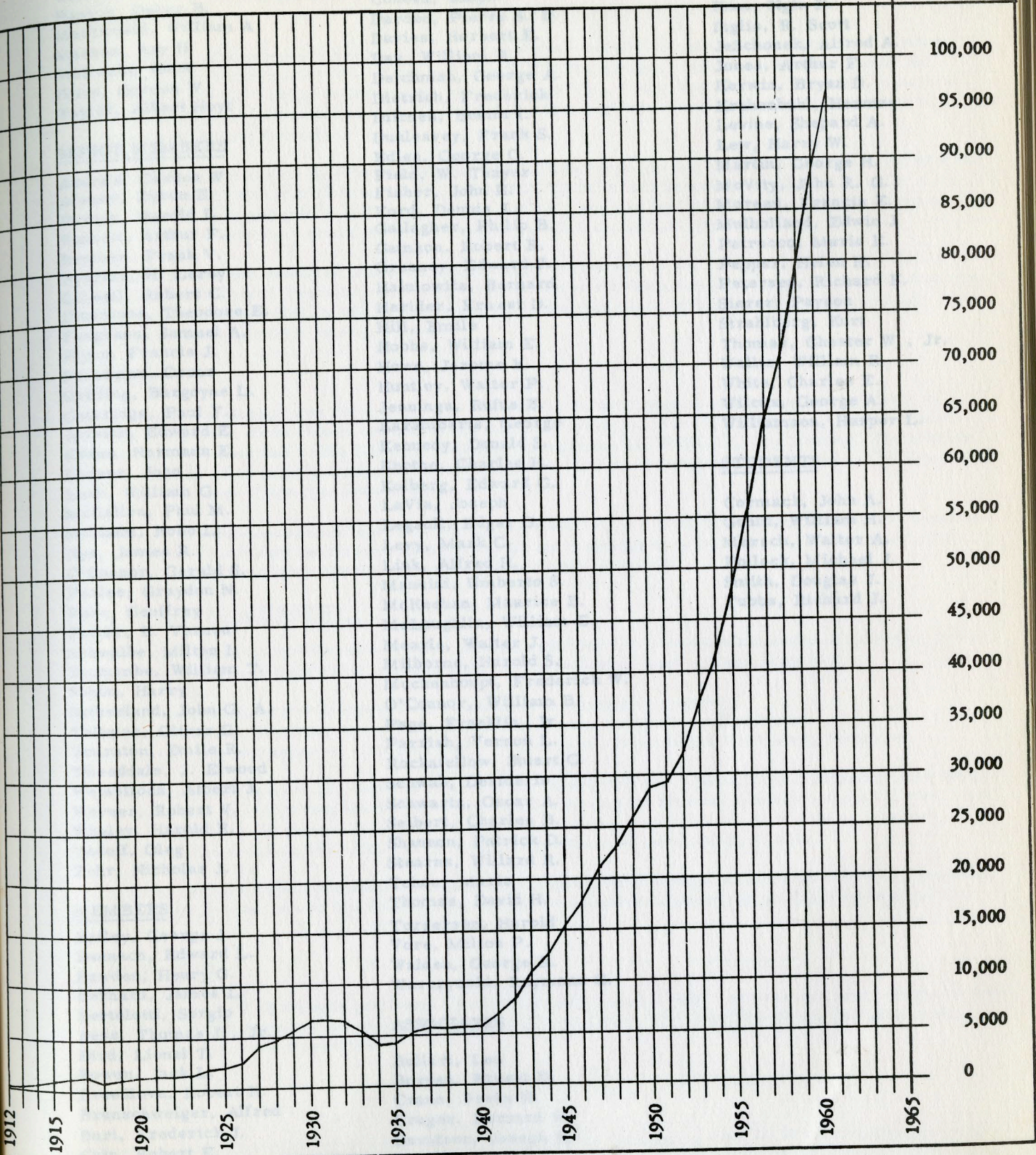
Section A - Table 10 - Membership by Grade, 1912 - 1961
 (Breakdown prior 1931 not available)

Year	F	SM	M	A	J	S	Total 109
1912	-	-	-	-	-	-	231
1913	-	-	-	-	-	-	633
1914	-	-	-	-	-	-	984
1915	-	-	-	-	-	-	1,193
1916	-	-	-	-	-	-	1,327
1917	-	-	-	-	-	-	822
1918	-	-	-	-	-	-	1,086
1919	-	-	-	-	-	-	1,285
1920	-	-	-	-	-	-	1,382
1921	-	-	-	-	-	-	1,242
1922	-	-	-	-	-	-	1,418
1923	-	-	-	-	-	-	2,053
1924	-	-	-	-	-	-	2,248
1925	-	-	-	-	-	-	2,730
1926	-	-	-	-	-	-	4,210
1927	-	-	-	-	-	-	4,823
1928	-	-	-	-	-	-	5,695
1929	-	-	-	-	-	-	6,535
1930	-	-	-	-	-	-	6,734
1931	135	-	720	5,670	209	-	6,403
1932	147	-	711	5,231	199	115	5,199
1933	125	-	613	4,268	68	125	4,240
1934	115	-	551	3,320	25	229	4,419
1935	128	-	601	3,425	26	239	5,195
1936	133	-	637	4,092	34	299	5,459
1937	136	-	624	4,291	48	360	5,403
1938	156	-	645	4,250	38	314	5,612
1939	159	-	660	4,362	32	399	5,705
1940	175	-	700	4,314	20	496	7,021
1941	166	-	761	5,135	50	909	8,794
1942	168	-	833	6,205	55	1,533	11,079
1943	185	886	17	7,705	-	2,286	13,137
1944	184	1,025	337	9,508	-	2,083	15,779
1945	210	1,288	1,238	11,145	-	1,898	18,154
1946	218	1,763	2,330	11,591	-	2,252	21,037
1947	239	2,068	3,017	12,079	-	3,634	23,437
1948	259	2,192	3,334	11,713	-	5,939	26,769
1949	284	2,421	3,559	12,309	-	8,196	29,002
1950	323	2,726	3,803	14,590	-	7,560	29,408
1951	345	3,070	4,043	17,523	-	4,427	32,874
1952	379	3,566	4,617	20,029	-	4,283	37,134
1953	425	4,170	5,307	22,702	-	4,530	41,778
1954	489	4,780	6,107	24,846	-	5,556	47,388
1955	565	5,643	13,360	20,492	-	7,328	55,494
1956	635	6,486	19,110	18,879	-	10,384	64,773
1957	700	7,685	26,115	16,827	-	13,446	71,361
1958	770	8,536	32,373	14,721	-	14,961	79,166
1959	823	9,463	38,977	13,165	-	16,738	88,479
1960	896	10,001	47,114	12,806	-	17,662	96,551
1961	964	10,570	52,284	13,566	-	19,167	

THE INSTITUTE OF RADIO ENGINEERS, INC.

TREND OF MEMBERSHIP 1912 TO 1961

NUMBER OF MEMBERS



FELLOWS

Carter, Philip S.
 Hanson, Oscar B.
 MacDonald, William A
 Manson, Ray H.
 McIlwain, Knox
 Olive, Gordon W.
 Taylor, Albert Hoyt

SENIOR MEMBERS

Andrew, Gordon W.
 Atwood, Byron E.
 Barney, Harold L.
 Bennett, Arthur F.
 Bremer, Frank V.
 Byerlay, H. Leroy
 Colwell, Robert C.
 Dinsmoor, Theodore E.
 Ferguson, Samuel A.
 Flynn, Francis J.
 Friedman, Oscar
 Griffing, Burgoyne L.
 Guthridge, Paul F.
 Jenkins, Edward E.
 Kranz, Hermann E.
 Lesser, John
 Lush, William G.
 McCallen, Paul M.
 Millham, Robb L.
 Nye, James R.
 O'Connor, Gerald S.
 Parlee, Graydon N.
 Parr, Geoffrey
 Potter, E. Vernon
 Schwalbe, Milton I.
 Seccombe, William T.
 Sohon, Harry
 Sutherland, John G. A.
 Tallman, Oliver G.
 Touraton, Emile R.
 Tweeddale, J. Elwood
 Weissfloch, Albert J.
 Werner, Robert V.
 Whaley, Harold R.
 Yadoff, Oleg
 Zehr, Nicholas J.

MEMBERS

Bailey, George J.
 Baunach, Edward L.
 Bawden, Henry G.
 Bernard, James L.
 Bertolotti, Sergio
 Bess, Thomas J., Jr.
 Bird, Lionel T.
 Bowen, Jack L.
 Breedlove, Robert H.
 Brunschweiger, Alfred
 Buri, Frederick J.
 Cain, Robert E.
 Carew, Samuel J. H.
 Carlan, Lewis B.

Clothier, Charles M.
 Conesa, Ralph
 Darden, Pierre S. D.
 Davies, Herbert E.
 Day, William R.
 Deichman, George A.
 Dietrich, Frederick
 Dikmen, Besim I.
 Dunleavey, Frank S.
 Edlen, George G.
 Field, W. Thayer
 Fisher, John H.
 Ford, Dennis J.
 Gallagher, Philip B.
 Gamzon, Robert R.
 Greaney, Edward J.
 Haimowitz, Bernard
 Herider, Ernest D.
 Hill, Emile
 Hobbs, William E.
 Howe, Jerome K.
 Huntley, Walter P.
 Jennings, Rufus B.
 Karamberis, George
 Kennedy, Donald S.
 Knothe, Charles H.
 Kolberg, Edward G.
 LaVia, Joseph
 Legault, Edgar G.
 Levy, Mark C.
 Link, Alfred H.
 Mancini, Umberto S.
 McKeehan, Maurice B.
 McLaughlin, William C.
 Mearls, Walter J.
 Milborne, Harold S.
 Muckenhoupt, Frederick W.
 O'Connor, William B.
 Page, Franklin, Jr.
 Parrish, Vernon L.
 Rockafellow, Stuart C.
 Schwab, Desiderio
 Schwartz, Oscar A.
 Seibert, Charles B.
 Shannon, Patrick D.
 Stearns, Willard R.
 Tchou, Mario
 Thomas, David H.
 Torgersen, Harold
 Vore, Milton P.
 Walden, George R.
 Warczynski, Raymond G.

ASSOCIATES

Bollari, Leo
 Borden, Ernest D.
 Crane, Percy H.
 Cruger, Bernard W.
 Davidson, Joseph K.
 Desser, Mark S.
 Dixon, Frank E.

Flury, Hubert E.
 Gehmlich, Arnold P.
 Hom, Ngim P.
 Inglis, R. Scott
 JeSchonek, Alfred A.
 Jones, Arthur F.
 Kerwin, Bryan D.
 Krahenbuhl, Herman
 Levine, Shepard A.
 Lew, Harry W.
 Martin, George H.
 McVity, John R. G.
 Moreau, Francis E.
 Mulholland, Edwin J.
 Patrucco, Mario E.
 Pepper, Helen H.
 Petersen, Richard E.
 Sierer, Payson
 Strahlberg, Kurt
 Thomas, Chester W., Jr.
 Wallis, William R.
 White, Charles E.
 Wilcox, George A.
 Williamson, Harper L.

STUDENTS

Cormack, John A.
 Gould, William H.
 Marsch, Walter A.
 Pollock, Michael J.
 Smith, Douglas J.
 Tubbs, Richard J.

TABLE 1 - 1961, PROFESSIONAL GROUP ACTIVITIES

SECTION B.

GENERAL:

During 1961 28 Professional Groups operated actively within the IRE. A 29th Group -- the Professional Group on Geoscience Electronics-- was organized in November 1961 and will be in full operation in 1962.

The majority of IRE members belong to one or more Professional Groups. The Professional Groups have a total membership of 87,060 which includes 7,325 IRE student members who have joined the Groups at the special student member rate of \$1.00 annually. Under the Affiliate Plan 702 scientists and medical doctors, whose major interests lie in fields other than electronics have affiliated with 25 of the Professional Groups.

Each Group levies a fee on its membership for publication purposes and all Group members receive the pertinent Group TRANSACTIONS regularly. TRANSACTIONS of all Groups are subscribed to by companies, universities and public libraries. There is also a demand for individual Group subscriptions and requests for individual copies of the TRANSACTIONS from outside sources.

IRE Headquarters has rendered financial and editorial assistance to the Groups in 1961. The Office of the Professional Groups Secretary provided administrative services for Group operations, the planning of meetings, advance publicity and mailings for all Group activities which included approximately 700 mailings to Group members during the year.

SYMPOSIA:

The Professional Groups are responsible for the procurement of papers and actual management of national symposia. Each Group sponsored one or more technical meetings during this year, in addition to technical sessions at the IRE International Convention, the WESCON, The National Electronics Conference and other jointly sponsored meetings, for a total of 59 meetings of national and international import in 1961 (see Table 2 of Section B)

In an effort to minimize the number of meetings per year and to assist in reducing the general demand on man hours of industry personnel, many of the Group meetings have been successfully joined with those of other Professional Groups and other professional societies.

INTERNATIONAL ACTIVITIES

In order that Professional Group activities may be expanded into international areas of interest, three of our Professional Groups have representation in the following international societies.

PG on Automatic Control-- International Federation of Automatic Control
PG on Bio-Medical Electronics -- International Federation for Medical Electronics
PG on Electronic Computer -- International Federation for Information Processing Societies.

The Professional Group on Bio-Medical Electronics joined with the International Federation for Medical Electronics in sponsoring the 4th International Conference on Medical Electronics held in New York City in July 1961. 300 papers were presented in 36 sessions in addition to six workshop sessions and 80 exhibits. The meeting was attended by 3,000 people from all parts of the world.

Five of the Groups--The Professional Groups on:Antennas and Propagation, Circuit Theory, Information Theory, Instrumentation and Microwave Theory and Technique co-sponsored the URSI Spring and Fall Meetings.

PUBLICATIONS

During the year all 28 Groups published TRANSACTIONS many of which included the proceedings of their national meetings in one or more issues. Full details on Group TRANSACTIONS are included in the report of the Editorial Department.

CHAPTERS :

Chapter growth is continuing at a healthy rate. At present there are a total of 303 active Professional Group Chapters operating in 57 IRE Sections (listing in Table 4 of Section B). Most of the Chapters meet regularly and sponsor meetings covering the fields of interest of their associated Groups in the various Sections of IRE. Chapter meetings held in 1960 and 1961, by Group and by Section, are recorded in Section F, Table 3.

TABLE 2 - 1961, NATIONAL TECHNICAL MEETINGS

SECTION B

<u>NAME OF MEETING</u>	<u>SPONSORING GROUPS</u>	<u>PLACE</u>	<u>DATE</u>
Symposium on Thermo-Electric Energy Conversion	PGED, ANS, AIEE, AIME	Dallas, Texas	Jan. 8-12
7th Nat'l. Symposium on Reliability & Quality Control	PGRQC, AIEE, ASQC, EIA	Philadelphia, Pa.	Jan. 9-11
2nd Winter Convention on Military Electronics	PGMIL Los Angeles Section	Los Angeles, Cal.	Feb. 1-3
Int'l. Solid State Circuits Conference	PGCT, AIEE, Univ. of Pennsylvania	Philadelphia, Pa.	Feb. 15-17
4th Nat'l. Conference of Electronic Engineering	Israel Section Technion-Israel	Haifa, Israel	Feb. 20-21
Conference on Magnetic & Dielectric Devices	PGED, AIEE	Pasadena, Cal.	Feb. 22
Symposium on Eng'g. Aspects of Magnetohydrodynamics	PGNS, AIEE, IAS	Philadelphia, Pa.	Mar. 9-10
IRE International Convention	All PG's	New York, N. Y.	Mar. 20-23
Int'l. Symposium on Electromagnetics & Fluid Dynamics of Gaseous Plasma	PGED, PGMTT, PGNS PIB, IAS, Dept. of Defense	New York, N. Y.	Apr. 4-6
15th Annual Spring Technical Conference on Electronic Data Processing	Cincinnati Section, ARS	Cincinnati, Ohio	Apr. 12-13
Symposium on Information & Decision Processes	PGIT & Purdue Univ.	Lafayette, Ind.	Apr. 12-13
Southwestern Regional Conference (SWIRECO)	Region 6	Dallas, Texas	Apr. 19-21
Symposium on Biomedical Engineering	PGBME, AIEE	San Diego, Calif.	Apr. 20-21
7th Region Technical Conference & Trade Show	Region 7	Phoenix, Ariz.	Apr. 26-28
URSI-IRE- Spring Meeting	URSI, PGCT, PGAP, PGI, PGMTT, PGIT	Washington, D. C.	May 1-4
Electronic Components Conference	PGCP, AIEE, EIA, WEMA	San Francisco, Cal.	May 2-4
2nd Nat'l. Symposium on Human Factors in Elec.	PGHFE	Arlington, Va.	May 4-5
Workshop in Graph Theory	PGCT	Urbana, Ill.	May 6
5th Midwest Symposium on Circuit Theory	PGCT	Urbana, Ill.	May 8-9
Nat'l Aerospace Electronics Conference (NAECON)	PGANE, Dayton Section	Dayton, Ohio	May 8-10

TABLE 2 - 1961, NATIONAL TECHNICAL MEETINGS

continued

SECTION B

<u>NAME OF MEETING</u>	<u>SPONSORING GROUPS</u>	<u>PLACE</u>	<u>DATE</u>
Western Joint Computer Conference	PGEC, AIEE, ACM	Los Angeles, Cal.	May 9-11
PGMTT National Symposium	PGMTT	Washington, D. C.	May 15-17
Electro-Optical Radiation Devices Symposium	PGED, AIEE	Pasadena, Cal.	May 18-19
5th Global Communications Symposium (GLOBECOM V)	PGCS, US Signal Corps.	Washington, D. C.	May 22-24
Nat'l. Telemetering Conference	PGSET, AIEE, IAS, ISA, ARS	Chicago, Ill.	May 22-24
3rd Nat'l. Radio Frequency Interference Symposium	PGRFI	Washington, D. C.	June 12-13
5th Annual Conference on Product Eng'g. & Production	PGPEP	Philadelphia, Pa.	June 14-15
2nd Spring Conference on Broadcast & TV Receivers	PGBTR, Chicago Section	Des Plaines, Ill.	June 19-20
5th Nat'l. Convention on Military Electronics	PGMIL	Washington D. C.	June 26-28
Solid State Devices Research Conference	Comm. 28 and AIEE	Stanford, Calif.	June 26-28
Joint Automatic Control Conference	PGAC, ASME, ISA, AIEE, AIChE	Boulder, Colo.	June 28-30
Conference on Data Acquisition & Processing in Medicine & Biology	PGBME, AIEE, ISA	Rochester, N. Y.	July 13-14
4th Int'l. Conference on Medical Electronics	PGBME, IFME, JECMB	New York, N. Y.	July 16-21
WESCON	All PG's , WCEMA, Los Angeles & San Francisco Sections	San Francisco, Cal.	Aug. 22-25
Joint Nuclear Instrumentation Conference	PGNS, PGI, AIEE, ISA	Raleigh, N. C.	Sept. 6-8
Nat'l. Symposium on Space Electronics & Telemetry	PGSET	Albuquerque, N. M.	Sept. 6-8
Int'l. Conference on Electrical Engineering Education	PGE, AIEE, ASEE	Syracuse, N. Y.	Sept. 6-13
Conference on Technical Scientific Communications	PGEWS, Philadelphia Section	Philadelphia, Pa.	Sept. 13-15
9th Annual Engineering Management Meeting	PGEM, AIChE, AIEE, ASME, ASCE, AIIE	New York, N. Y.	Sept. 14-15

TABLE 2 - 1961, NATIONAL TECHNICAL MEETINGS

continued

SECTION B

<u>NAME OF MEETING</u>	<u>SPONSORING GROUPS</u>	<u>PLACE</u>	<u>DATE</u>
Industrial Electronics Symposium	PGIE, AIEE, ISA	Boston, Mass.	Sept. 20-21
CISPR Meeting	PGRFI, CISPR, ASA	Philadelphia, Pa.	Oct. 1-6
7th Nat'l Communications Symposium	PGCS, Rome-Utica Section	Utica, N. Y.	Oct. 2-4
IRE Canadian Electronics Conference	Region 8	Toronto, Canada	Oct 2-4
11th Annual Symposium on Broadcasting	PGB	Washington, D. C.	Oct. 6-7
National Electronics Conference	IRE, AIEE, Ill. Inst. of Tech.	Chicago, Ill.	Oct. 9-11
Int'l. Symposium on Eng'g. Writing & Speech	PGEWS	E. Lansing, Mich.	Oct. 16-17
Symposium on Electronics Engineering Education	No. Carolina Section	Greensboro, N. C.	Oct. 19-20
East Coast Conference on Aerospace & Navigational Electronics (ECCANE)	PGANE, Baltimore Section	Baltimore, Md.	Oct. 23-25
URSI-IRE Fall Meeting	URSI, PGAP, PGI, PGCT, PGIT, PGMTT	Austin, Texas	Oct. 23-25
8th Annual Nuclear Science Meeting on Aerospace Nuclear Propulsion	PGNS, AEC, NASA	Las Vegas, Nev.	Oct. 23-27
Instrumentation Facilities for Biomedical Research Symposium	PGBME, AIEE, ISA	Omaha, Neb.	Oct. 26-27
Electron Devices Meeting	PGED	Washington, D. C.	Oct. 26-28
Radio Fall Meeting	PGED, PGBTR, PGRQC, EIA	Syracuse, N. Y.	Oct. 30-31
Conference on Non-Linear Magnetics & Magnetic Amplifiers	AIEE, PGIE, PGEC	Los Angeles, Cal.	Nov. 6-8
7th Conference on Radio Interference Reduction & Electronic Reliability	PGRFI, Armour Res. Foundation	Chicago, Ill.	Nov. 7-9
Ultrasonics Engineering Symposium	PGUE, Acoustical Society	Cincinnati, Ohio	Nov. 8-11
7th Conference on Magnetism & Magnetic Materials	PGMTT, AIEE, AIP, ONR, AIME	Phoenix, Ariz.	Nov. 13-16
Northeast Research & Eng'g. Meeting (NEREM)	Region 1	Boston, Mass.	Nov. 14-16

TABLE 2 - 1961, NATIONAL TECHNICAL MEETINGS

continued

SECTION B

NAME OF MEETING	SPONSORING GROUPS	PLACE	DATE
Symposium on Electronic Systems Reliability	Kansas City Section	Kansas City, Mo.	Nov. 14
Annual Meeting on Vehicular Communications	PGVC	Minneapolis, Minn.	Nov. 30- Dec. 1
Eastern Joint Computer Conference	PGEC, AIEE, ACM	Washington, D. C.	Dec. 12-14

1957	1958	1959	1960	1961		Total
				Student Discount	Student Registry	
5,384	4,148	5,401	6,591	458	304	3,451
1,256	1,275	1,596	1,981	88	66	1,255
2,814	3,112	1,772	4,213	532	81	3,182
5,256	6,690	7,932	7,525	967	359	4,477
1,624	1,987	2,869	1,718	198	91	1,301
1,181	1,229	1,442	1,987	51	43	1,389
1,369	1,455	1,790	1,712	40	37	1,336
1,925	1,915	1,874	1,930	258	59	1,379
3,432	3,710	4,323	4,070	105	109	3,403
2,499	2,766	3,625	3,997	289	238	3,652
2,893	3,124	3,752	3,487	140	119	2,747
2,721	2,775	3,362	3,542	212	190	3,098
1,795	1,894	2,138	1,977	136	76	1,513
4,202	4,024	4,509	4,518	210	106	3,979
3,798	4,221	5,043	5,932	464	239	4,529
6,881	7,305	8,868	9,281	1,052	321	7,999
5,607	4,034	5,166	5,327	426	349	4,176
1,661	1,711	2,134	2,344	327	129	2,115
2,304	2,591	3,265	3,750	241	295	3,467
741	792	935	985	19	40	866
1,559	1,648	1,982	1,891	99	99	1,685
631	689	1,118	1,157	16	39	1,067
2,726	3,243	3,955	4,044	799	524	3,432
3,221	3,399	3,937	4,291	179	171	3,065
170	161	249	534	40	44	609
170	1,044	4,570	1,717	84	156	1,508
10	187	690	922	10	23	1,025
9	210	427	623	21	59	602
65,768	72,041	87,037	89,714	7323	4135	75,630
						97,060

TABLE 1 - 1961 PROFESSIONAL GROUP MEMBERSHIP, 5 YEAR COMPARISON
Paid Membership Only

TABLE 3 - 1961, PROFESSIONAL GROUP MEMBERSHIP, 5 - YEAR COMPARISON

Paid Membership Only

SECTION B

CODE	GROUP	1957	1958	1959	1960	1961			Total
						Student Discount	Student Regular	Other Mem- bers	
G-1	Audio	4,324	4,348	5,403	4,551	458	304	3431	4193
G-2	Broadcasting	1,252	1,275	1,598	1,481	85	65	1253	1403
G-3	Antennas & Propagation	2,814	3,117	3,772	4,213	532	83	3189	3804
G-4	Circuit Theory	5,956	6,690	7,932	7,523	967	359	5477	6803
G-5	Nuclear Science	1,624	1,587	1,869	1,718	198	91	1301	1590
G-6	Vehicular Communications	1,161	1,229	1,442	1,487	51	43	1389	1483
G-7	Reliability & Quality Control	1,369	1,455	1,790	1,712	40	37	1836	1913
G-8	Broadcast & Television Receivers	1,905	1,915	1,874	1,940	238	59	1379	1676
G-9	Instrumentation	3,422	3,710	4,323	4,070	105	169	3403	3677
G-10	Space Electronics & Telemetry	2,499	2,766	3,625	3,997	289	238	3652	4179
G-11	Aerospace & Navigational Electronics	2,893	3,124	3,752	3,487	140	119	2947	3206
G-12	Information Theory	2,721	2,796	3,342	3,542	233	150	3098	3481
G-13	Industrial Electronics	1,785	1,894	2,128	1,977	158	78	1533	1769
G-14	Engineering Management	4,202	4,024	4,509	4,518	230	106	3979	4315
G-15	Electron Devices	3,758	4,221	5,043	5,572	464	259	4559	5282
G-16	Electronic Computers	6,881	7,505	8,808	9,231	1432	321	7599	9352
G-17	Microwave Theory & Techniques	3,607	4,034	5,160	5,547	426	345	4778	5549
G-18	Bio-Medical Electronics	1,661	1,711	2,134	2,344	327	129	2315	2771
G-19	Communications Systems	2,304	2,591	3,265	3,750	241	295	3467	4003
G-20	Ultrasonics Engineering	741	782	955	985	19	40	809	868
G-21	Component Parts	1,559	1,648	1,882	1,881	39	39	1685	1763
G-22	Product Engrg. & Production	821	889	1,115	1,157	16	29	1067	1112
G-23	Automatic Control	2,736	3,233	3,963	4,044	299	324	3432	4055
G-24	Military Electronics	3,221	3,395	3,907	4,291	179	171	4065	4415
G-25	Education	170	461	749	834	40	44	809	893
G-26	Engineering Writing & Speech	370	1,044	1,570	1,717	88	156	1508	1752
G-27	Radio Frequency Interference	10	387	690	922	10	23	1028	1061
G-28	Human Factors in Electronics	*	210	427	623	21	59	612	692
G-29	Geoscience Electronics								*
	Totals	65,766	72,041	87,027	89,114	7325	4135	75,600	87,060

* No fees levied

TABLE 4 - 1961, AFFILIATES BY GROUP; 5 - YEAR COMPARISON

SECTION B

<u>CODE</u>	<u>GROUP</u>	<u>1957</u>	<u>1958</u>	<u>1959</u>	<u>1960</u>	<u>1961</u>
G-1	Audio	2	5	6	6	6
G-2	Broadcasting	-	-	-	-	-
G-3	Antennas & Propagation	-	1	2	3	4
G-4	Circuit Theory	2	2	4	4	5
G-5	Nuclear Science	5	9	10	27	33
G-6	Vehicular Communications	-	1	1	1	1
G-7	Reliability & Quality Control	1	21	42	40	54
G-8	Broadcast & Television Receivers-	-	-	-	-	-
G-9	Instrumentation	2	2	5	3	4
G-10	Space Electronics & Telemetry	-	1	1	-	2
G-11	Aerospace & Navigational Electronics	-	-	2	3	5
G-12	Information Theory	7	16	29	27	31
G-13	Industrial Electronics	-	-	-	-	-
G-14	Engineering Management	2	3	1	4	32
G-15	Electron Devices	7	8	8	12	18
G-16	Electronic Computers	15	55	66	68	105
G-17	Microwave Theory & Techniques	1	2	2	7	8
G-18	Bio-Medical Electronics	47	104	167	205	296
G-19	Communications Systems	-	-	1	-	1
G-20	Ultrasonics Engineering	1	7	4	5	6
G-21	Component Parts	-	-	1	1	2
G-22	Product Engrg. & Production	2	2	7	8	8
G-23	Automatic Control	5	9	12	11	13
G-24	Military Electronics	8	9	5	4	3
G-25	Education	-	4	12	10	7
G-26	Engineering Writing & Speech	-	18	28	30	30
G-27	Radio Frequency Interference	4	-	3	5	6
G-28	Human Factors in Electronics	-	-	2	19	22
Totals		111	279	421	503	702

G-19 Communications Systems
 G-3 Antennas and Propagation
 G-25 Education
 G-15 Electron Devices
 G-10 Space Electronics & Telemetry
 G-24 Military Electronics
 G-18 Bio-Medical Electronics
 G-26 Engineering Writing & Speech
 G-17 Microwave Theory & Techniques
 G-12 Information Theory
 G-16 Electronic Computers
 G-22 Product Engineering & Production
 G-8 Broadcast & Television Receivers
 G-6 Vehicular Communications
 G-20 Ultrasonics Engineering
 G-23 Automatic Control
 G-14 Engineering Management
 G-21 Component Parts
 G-7 Reliability & Quality Control
 G-4 Circuit Theory
 G-9 Instrumentation
 G-11 Aerospace & Navigational Electronics
 G-13 Industrial Electronics
 G-2 Broadcasting
 G-5 Nuclear Science
 G-1 Audio

TABLE 5-1961, PERCENTAGE CHANGES IN GROUP MEMBERSHIP BY GROUP; 2-YEAR COMPARISON

SECTION B

CODE	GROUP	NO. OF CHAPTERS	1961 Percentage Increase Over 1960	LOCATION
G-18	Bio-Medical Electronics		18	Aeron
G-27	Radio Frequency Interference		15	Baltimore
G-7	Reliability & Quality Control		12	Boston
G-28	Human Factors in Electronics		11	Dayton
G-25	Education		7	Fla. West Coast
G-19	Communications Systems		7	Fla. West Coast
G-10	Space Electronics & Telemetry		5	Fla. West Coast
G-24	Military Electronics	21	3	Akron
G-26	Engineering Writing & Speech		2	Alb. - Los Alamos
G-16	Electronic Computers		1	Baltimore
G-23	Automatic Control		-	Boston
G-17	Microwave Theory & Techniques		-	Buffalo-Niagara
G-6	Vehicular Communications		-	Central Penna.
G-12	Information Theory	minus	2	Chicago
G-22	Product Engineering & Production	"	4	Columbus
G-14	Engineering Management	"	4	Dayton
G-2	Broadcasting	"	5	Dover-Boulder
G-15	Electron Devices	"	5	Los Angeles
G-21	Component Parts	"	6	Los Angeles
G-5	Nuclear Science	17	7	Alb. - Los Alamos
G-11	Aerospace & Navigational Electronics	"	8	Baltimore
G-1	Audio	"	8	Boston
G-3	Antennas & Propagation	"	10	Chicago
G-4	Circuit Theory	"	10	Cincinnati
G-9	Instrumentation	"	10	Cleveland
G-13	Industrial Electronics	"	10	Dayton
G-20	Ultrasonics Engineering	"	12	Harold
G-8	Broadcast & Television Receivers	"	14	Monetta
G-23	Automatic Control	13		
				<u>1960 Percentage Increase Over 1959</u>
G-19	Communications Systems		15	Chicago
G-3	Antennas and Propagation		12	Dallas-Ft. Worth
G-25	Education		11	Long Island
G-15	Electron Devices		11	Los Angeles
G-10	Space Electronics & Telemetry		10	Los Angeles
G-24	Military Electronics	21	10	Baltimore
G-18	Bio-Medical Electronics		10	Boston
G-26	Engineering Writing & Speech		9	Buffalo-Niagara
G-17	Microwave Theory & Techniques		8	Chicago
G-12	Information Theory		6	Cleveland
G-16	Electronic Computers		5	Columbus
G-22	Product Engineering & Production		4	Dayton
G-8	Broadcast & Television Receivers		4	Los Angeles
G-6	Vehicular Communications		3	Portland
G-20	Ultrasonics Engineering		3	Rochester
G-23	Automatic Control		2	San Diego
G-14	Engineering Management		-	Cleveland
G-21	Component Parts		-	Fla. West Coast
G-7	Reliability & Quality Control	minus	4	Dayton
G-4	Circuit Theory	"	5	Dayton
G-9	Instrumentation	"	6	Lincoln
G-11	Aerospace & Navigational Electronics	"	7	Philadelphia
G-13	Industrial Electronics	"	7	Philadelphia
G-2	Broadcasting	"	7	Philadelphia
G-5	Nuclear Science	"	8	Philadelphia
G-1	Audio	"	16	Philadelphia

TABLE 6 - 1961, PROFESSIONAL GROUP CHAPTERS

SECTION B

<u>GROUP CODE NO.</u>	<u>NAME OF GROUP</u>	<u>NO. OF CHAPTERS</u>	<u>SECTION LOCATION</u>
G-11	Aerospace & Navigational Electronics	8	Akron Baltimore Boston Dayton Fla. West Coast
G-3	Antennas & Propagation	21	Akron Alb. - Los Alamos Baltimore Boston Buffalo-Niagara Central Penna. Chicago Columbus Dayton Denver-Boulder Los Angeles
G-1	Audio	17	Alb. - Los Alamos Baltimore Boston Chicago Cincinnati Cleveland Dayton Hawaii Houston
G-23	Automatic Control	13	Akron Baltimore Boston Chicago Dallas-Ft. Worth Long Island Los Angeles
G-18	Bio-Medical Electronics	21	Baltimore Boston Buffalo-Niagara Chicago Cleveland Columbus Houston Los Angeles Portland Rochester San Diego
G-2	Broadcasting	10	Cleveland Fla. West Coast Houston Omaha-Lincoln Philadelphia
			Met. N. Y., No. NJ & LI Oklahoma City Philadelphia Orange Belt Orange County Philadelphia San Diego San Francisco Santa Ana Seattle Syracuse Toronto Wash. D. C. Milwaukee Philadelphia San Antonio San Diego San Francisco Syracuse Twin Cities Washington, D. C. Milwaukee New York Philadelphia Pittsburgh Schenectady Twin Cities Memphis Milwaukee Montreal Met. N. Y., N. J. L. I. & Princeton North Carolina Omaha-Lincoln Philadelphia San Francisco Twin Cities Washington, D. C. Pittsburgh San Francisco Twin Cities Vancouver Washington, D. C.

TABLE 6 - 1961, PROFESSIONAL GROUP CHAPTERS

SECTION B

<u>GROUP CODE NO.</u>	<u>NAME OF GROUP</u>	<u>NO. OF CHAPTERS</u>	<u>SECTION LOCATION</u>
G-8	Broadcast & Television Receivers	1	Chicago
G-4	Circuit Theory	11	Alb. - Los Alamos Chicago Houston Los Angeles Omaha-Lincoln Philadelphia
G-19	Communications Systems	15	Baltimore Boston Chicago Fla. West Coast Los Angeles Monmouth No. New Jersey Oklahoma City Omaha-Lincoln
G-21	Component Parts	10	Baltimore Buffalo-Niagara Chicago Dayton Houston Los Angeles
G-15	Electron Devices	9	Boston Los Angeles Met. NY, NJ, LI Omaha-Lincoln Philadelphia
G-16	Electronic Computers	21	Akron Baltimore Binghamton Boston Chicago Dallas-Ft. Worth Dayton Detroit Houston Long Island
G-14	Engineering Management	14	Baltimore Binghamton Boston Chicago Dayton Los Angeles NY, No. NJ, LI

TABLE 6 - 1961, PROFESSIONAL GROUP CHAPTERS

SECTION B

<u>GROUP CODE NO.</u>	<u>NAME OF GROUP</u>	<u>NO. OF CHAPTERS</u>	<u>SECTION LOCATION</u>	
G-26	Engineering Writing & Speech	9	Boston Chicago Los Angeles New York	No. New Jersey Philadelphia San Francisco Twin Cities Washington, D. C.
G-28	Human Factors in Electronics	1	Los Angeles	
G-13	Industrial Electronics	4	Chicago Cleveland	Omaha-Lincoln Schenectady
G-12	Information Theory	6	Baltimore Boston Los Angeles Omaha-Lincoln	San Francisco Washington, D. C.
G-9	Instrumentation	8	Atlanta Chicago Houston Long Island	Los Angeles Philadelphia San Francisco Washington, D. C.
G-17	Microwave Theory & Techniques	25	Alb. - Los Alamos Baltimore Boston Buffalo-Niagara Chicago Colombus Denver-Boulder Fla. West Coast Long Island Los Angeles New York No. New Jersey	Omaha-Lincoln Orange Belt Orange County Philadelphia San Diego San Francisco Schenectady Seattle Syracuse Tokyo Toronto Washington, D. C.
G-24	Military Electronics	20	Baltimore Boston Central Fla. Chicago Dayton Detroit Jt. Ft. Huachuca, Phoenix, Tucson Indianapolis	Long Island Los Angeles Omaha-Lincoln Ottawa Northwest Fla. Philadelphia Rochester Rome-Utica San Diego San Francisco Syracuse Washington, D. C.
G-5	Nuclear Science	9	Albuquerque Chicago Conn. Dayton	Los Alamos Los Angeles Oak Ridge Omaha-Lincoln Washington, D. C.
G-22	Product Engineering & Production	6	Boston Los Angeles NY, NJ, LI	Philadelphia San Francisco Washington, D. C.

TABLE 6 - 1961, PROFESSIONAL GROUP CHAPTERS

SECTION B

<u>GROUP CODE NO.</u>	<u>NAME OF GROUP</u>	<u>NO. OF CHAPTERS</u>	<u>SECTION LOCATION</u>	
G-27	Radio Frequency Interference	8	Chicago Ft. Worth Los Angeles NY, No. N. J., LI	Philadelphia Rome-Utica San Francisco Washington, D. C.
G-7	Reliability & Quality Control	10	Boston Chicago Columbus Fla. West Coast Fort Worth	Los Angeles NY, NJ, LI Philadelphia San Francisco Washington, D. C.
G-10	Space Electronics & Telemetry	11	Albuquerque Central Fla. Chicago Dayton Detroit Huntsville	Los Angeles Philadelphia San Diego San Francisco Washington, D. C.
G-6	Vehicular Communications	12	Baltimore Chicago Dallas Detroit Fla. West Coast Houston	Los Angeles NY, NJ, LI Omaha-Lincoln Philadelphia Twin Cities Washington, D. C.
26 Groups		303 Chapters	57 Sections	

Section B. Table 7 - 1961 Professional Group Membership, by Group, by Region, by Section

REGION	SECTION	G-1	G-2	G-3	G-4	G-5	G-6	G-7	G-8	G-9	G-10	G-11	G-12	G-13	G-14	G-15	G-16	G-17	G-18	G-19	G-20	G-21	G-22	G-23	G-24	G-25	G-26	G-27	G-28	Total
1	Binghamton	14	3	4	36	2	4	23	6	13	9	15	9	5	24	14	101	6	8	7	3	9	4	21	21	2	4	4	2	373
	Boston	253	56	311	526	72	59	166	80	271	225	189	387	125	317	458	704	572	209	220	63	140	92	280	258	76	122	56	59	6,346
	Buffalo-Niagara	21	18	29	39	7	12	13	11	25	31	40	34	7	31	29	38	43	26	38	5	16	6	23	43	4	7	10	5	611
	Connecticut	89	12	33	98	25	14	23	27	68	54	34	48	39	56	86	140	48	47	45	33	34	18	72	48	15	29	14	10	1,259
	Elmira-Corning	2	1	2	4	4	1	4	5	6	2	1	2	6	5	37	6	16	4	1	1	10	2	4	3	1	2	1	-	133
	Erie	7	-	2	3	-	1	2	3	3	-	-	2	3	1	2	5	3	2	2	3	2	1	4	-	-	-	1	1	53
	Ithaca	12	2	25	30	5	3	2	2	8	6	5	29	2	6	21	18	18	5	10	2	1	1	12	9	5	4	3	1	247
	Rochester	42	6	15	65	11	6	13	17	16	9	15	23	16	23	34	56	22	36	31	8	19	4	32	24	8	13	5	1	570
	Rome-Utica	18	5	20	23	5	6	17	8	8	18	21	19	2	61	9	48	32	7	57	4	9	9	15	54	4	13	20	8	520
	Schenectady	14	7	26	20	21	5	7	4	26	14	13	22	18	18	54	46	47	14	16	5	9	2	35	14	5	3	5	3	473
	Syracuse	44	22	55	103	10	7	23	27	21	44	27	71	10	100	96	110	86	22	57	9	20	7	29	156	22	28	6	5	1,217
Western Mass.	9	3	-	20	3	3	3	9	5	7	4	3	2	10	6	26	2	2	3	2	14	1	6	12	3	7	3	1	169	
	525	135	522	967	165	121	296	199	470	419	364	649	235	652	846	1298	895	382	487	138	283	147	533	642	145	232	128	96	11,971	
2	Long Island	184	45	166	334	67	52	92	86	186	153	218	62	83	197	213	378	374	132	162	39	89	52	229	245	33	81	94	38	4,084
	New York	238	95	147	409	64	56	91	90	147	122	134	237	109	192	342	749	303	174	237	48	101	52	178	181	51	103	64	41	4,755
	No. New Jersey	150	28	107	338	46	59	92	85	152	128	187	176	84	176	228	416	257	91	268	45	91	44	150	194	21	91	27	40	3,771
	Princeton	39	10	26	72	20	9	16	23	42	41	18	42	16	27	94	95	45	25	34	6	9	14	32	22	5	19	6	3	810
	611	178	446	1153	197	176	291	284	527	444	557	517	292	592	877	1638	979	422	701	138	290	162	589	642	110	294	191	122	13,420	
3	Atlanta	49	22	30	39	26	11	3	18	28	27	18	13	5	22	8	39	20	16	32	1	1	1	17	24	5	15	15	4	509
	Baltimore	75	20	89	156	14	19	24	20	53	79	87	81	12	104	88	139	146	40	62	14	28	6	62	125	18	34	21	11	1,627
	Canaveral	16	-	21	14	2	7	6	3	30	76	20	18	3	24	9	33	16	10	18	2	-	1	11	44	-	7	8	1	400
	Florida West Coast	11	15	13	20	11	22	26	5	19	23	17	10	6	19	15	30	44	15	24	5	8	7	15	39	2	9	11	5	446
	Gainesville	4	-	2	10	4	2	2	1	2	4	5	8	1	6	31	15	16	6	4	-	-	3	4	3	5	3	-	-	141
	Huntsville	24	7	17	35	8	6	9	5	26	37	8	6	12	16	19	33	17	23	12	2	5	3	28	22	8	6	2	-	396
	Miami	17	7	8	16	6	8	6	2	18	12	12	4	6	14	7	25	8	18	7	5	3	5	8	9	4	7	3	3	248
	Mobile	-	1	1	1	-	-	-	-	1	2	2	-	2	4	-	-	2	-	4	-	-	-	1	6	-	2	2	-	31
	North Carolina	24	18	10	17	5	11	8	3	21	5	9	6	5	9	8	27	22	27	17	2	5	2	5	32	6	14	1	2	321
	North West Florida	8	3	6	4	1	2	2	2	7	18	8	-	-	8	6	7	5	3	1	1	-	-	1	17	1	3	2	-	116
	Orlando	8	1	16	23	8	6	4	3	23	38	15	12	6	23	16	36	30	5	23	4	2	4	19	27	2	7	9	1	371
	Philadelphia	218	86	147	348	61	52	122	85	158	232	180	193	66	269	269	674	236	154	218	32	111	149	179	267	32	116	50	34	4,738
	South Carolina	3	5	9	5	2	7	2	1	6	3	4	2	5	4	5	8	6	6	6	3	5	1	7	6	1	2	1	-	115
	Virginia	31	11	23	27	17	34	6	7	20	33	25	11	11	27	24	40	32	14	35	4	4	4	14	33	9	13	10	3	522
Washington	162	85	259	249	76	78	85	45	188	295	168	172	52	240	204	394	241	109	271	30	62	30	97	376	28	84	109	35	4,224	
	650	281	651	964	243	265	305	200	600	884	578	536	192	789	709	1500	841	446	734	105	234	216	468	1030	121	322	244	99	14,205	

Section B. Table 7 - 1961 Professional Group Membership, by Group, by Region, by Section

Region	Section	G-1	G-2	G-3	G-4	G-5	G-6	G-7	G-8	G-9	G-10	G-11	G-12	G-13	G-14	G-15	G-16	G-17	G-18	G-19	G-20	G-21	G-22	G-23	G-24	G-25	G-26	G-27	G-28	Total
4	Akron	12	6	19	11	1	3	1	2	7	5	17	8	12	12	8	29	17	6	10	3	3	2	18	9	2	3	3	5	234
	Central Pennsylvania	8	-	19	26	1	2	2	8	6	16	13	18	1	15	10	18	16	5	7	6	3	-	7	17	3	2	5	3	237
	Cincinnati	38	5	8	18	8	11	2	7	9	9	12	12	4	12	11	20	10	9	13	-	4	-	18	12	3	5	2	-	262
	Cleveland	32	23	17	38	21	10	8	10	39	18	5	11	43	13	29	50	20	46	13	14	15	9	40	6	5	10	4	5	554
	Columbus	17	5	66	28	8	7	14	7	22	11	15	13	18	21	45	48	67	28	9	1	6	4	33	16	3	8	4	2	526
	Dayton	29	5	21	29	15	10	18	6	29	39	80	21	10	105	17	71	21	23	29	1	22	3	21	78	5	17	11	9	745
	Detroit	62	26	60	129	28	33	19	12	65	60	32	78	35	44	72	167	92	49	37	16	15	12	57	33	18	18	12	12	1,293
	Emporium	1	1	-	-	-	-	7	4	-	-	1	-	2	2	13	6	1	2	2	9	8	4	-	2	-	-	-	1	66
	Pittsburgh	47	28	17	54	43	20	10	14	40	27	11	20	31	27	67	81	26	21	22	14	11	6	67	19	15	6	7	1	752
	Toledo	12	3	3	1	1	4	1	5	10	5	5	1	10	7	6	4	6	1	3	2	4	-	5	5	-	-	1	-	105
	Western Michigan	10	2	1	4	1	5	-	2	2	1	3	-	4	2	1	9	1	4	7	1	2	1	4	1	2	-	1	-	71
Williamsport	<u>2</u>	<u>1</u>	<u>3</u>	<u>1</u>	<u>-</u>	<u>-</u>	<u>1</u>	<u>2</u>	<u>-</u>	<u>-</u>	<u>1</u>	<u>3</u>	<u>-</u>	<u>2</u>	<u>6</u>	<u>3</u>	<u>5</u>	<u>1</u>	<u>1</u>	<u>-</u>	<u>-</u>	<u>1</u>	<u>-</u>	<u>1</u>	<u>2</u>	<u>-</u>	<u>-</u>	<u>-</u>	<u>36</u>	
	270	105	234	339	127	105	83	79	229	191	195	185	170	262	285	506	282	195	153	67	93	42	270	199	58	69	50	38	4,881	
5	Cedar Rapids	24	14	9	34	6	9	10	6	7	11	32	13	4	25	12	33	16	19	26	1	6	3	11	7	10	16	4	3	371
	Chicago	229	42	130	266	69	130	60	168	112	104	68	104	105	274	135	249	161	102	150	37	79	25	128	111	27	80	36	14	3,195
	Evansville-Owensboro	5	2	4	9	2	2	4	4	3	1	1	-	4	11	12	6	4	2	-	-	2	1	1	2	1	3	-	1	87
	Fort Wayne	14	2	5	8	1	8	3	4	-	4	4	3	2	14	4	10	7	6	7	2	1	2	8	15	3	6	-	1	144
	Indianapolis	45	12	17	41	9	10	7	28	10	12	15	16	17	27	37	56	18	14	31	4	12	4	49	30	9	9	4	3	545
	Louisville	12	6	4	4	3	4	2	-	5	3	3	-	7	3	5	13	7	11	7	4	1	3	6	7	2	-	3	1	126
	Milwaukee	47	14	11	74	12	14	14	17	30	26	21	24	24	20	36	58	16	25	24	2	12	8	51	14	17	7	2	4	625
	Omaha-Lincoln	20	15	11	20	13	2	3	6	4	15	2	3	9	6	10	31	12	24	17	-	12	3	7	18	4	3	3	1	274
	South Bend-Mishawaka	13	3	3	10	2	2	3	4	5	10	5	3	10	8	3	8	7	5	5	-	2	-	8	2	3	4	1	-	129
	Twin Cities	<u>65</u>	<u>28</u>	<u>11</u>	<u>91</u>	<u>20</u>	<u>29</u>	<u>19</u>	<u>13</u>	<u>54</u>	<u>22</u>	<u>36</u>	<u>27</u>	<u>24</u>	<u>58</u>	<u>59</u>	<u>198</u>	<u>32</u>	<u>55</u>	<u>26</u>	<u>9</u>	<u>18</u>	<u>9</u>	<u>56</u>	<u>25</u>	<u>8</u>	<u>33</u>	<u>6</u>	<u>4</u>	<u>1,035</u>
	474	138	205	557	137	210	125	250	230	208	187	193	206	446	313	662	280	263	293	59	145	58	325	231	84	161	59	32	6,531	

Section B. Table 7 - 1961 Professional Group Membership, by Group, by Region, by Section

REGION	SECTION	G-1	G-2	G-3	G-4	G-5	G-6	G-7	G-8	G-9	G-10	G-11	G-12	G-13	G-14	G-15	G-16	G-17	G-18	G-19	G-20	G-21	G-22	G-23	G-24	G-25	G-26	G-27	G-28	Total
6	Beaumont-Port Arthur	9	11	3	4	3	3	-	5	-	6	-	-	4	-	3	2	1	-	-	1	-	-	-	-	3	2	-	60	
	Dallas	77	20	50	122	23	26	38	23	53	64	45	47	20	72	90	95	90	34	57	15	31	16	35	60	13	25	5	8	1,254
	Denver	38	17	83	53	17	7	7	10	60	62	22	20	12	29	34	54	59	26	39	6	6	7	19	39	9	14	11	5	765
	El Paso	9	4	27	23	6	6	2	2	11	28	3	8	1	9	5	22	15	5	9	1	-	1	4	17	1	5	3	1	228
	Fort Worth	10	5	14	16	12	9	8	2	15	14	21	5	10	10	13	32	16	8	7	5	4	4	12	17	2	7	8	1	287
	Houston	39	11	17	52	17	20	6	8	58	34	13	17	23	25	22	76	9	35	14	8	15	4	21	20	10	9	3	6	592
	Kansas City	25	9	21	32	15	6	7	8	22	14	30	16	7	23	21	36	30	24	20	8	10	5	10	11	10	18	4	3	445
	Little Rock	9	1	2	4	3	-	1	4	2	2	2	-	4	1	2	6	4	1	5	-	-	-	-	2	-	1	-	1	57
	Lubbock	10	5	3	11	3	4	-	2	3	3	2	2	-	3	3	6	1	4	4	-	-	-	3	4	1	1	-	-	78
	New Orleans	17	9	8	9	5	6	-	5	5	10	7	5	5	6	4	17	5	12	11	3	1	-	3	10	4	5	3	-	175
	Oklahoma City	13	9	8	10	3	6	3	4	7	11	21	2	2	6	6	13	4	8	15	1	4	1	5	13	7	6	3	1	192
	Saint Louis	30	8	23	43	5	6	15	4	23	32	27	14	7	25	17	50	19	23	16	1	6	6	40	27	9	14	5	3	498
	San Antonio-Austin	26	10	25	32	5	5	1	2	18	12	10	20	6	8	14	27	14	25	17	6	2	3	11	13	10	4	4	3	333
	Shreveport	4	1	2	1	1	4	1	1	2	2	4	1	1	3	1	6	2	1	4	1	1	-	4	5	1	2	1	1	58
	Tulsa	8	6	6	19	3	4	3	4	15	8	6	5	9	6	4	17	3	6	5	6	3	2	12	5	5	3	3	-	176
	Wichita	14	2	5	7	1	1	0	1	4	5	12	6	-	8	7	7	1	3	3	1	1	-	6	18	-	3	1	3	120
			338	128	297	438	122	113	92	85	298	307	225	168	111	234	243	467	274	216	226	62	85	49	185	261	82	120	56	36
7	Alamogordo-Holloman	3	-	4	-	2	-	1	1	4	10	4	3	1	8	-	14	1	3	3	-	-	-	4	6	-	3	-	1	76
	Albuquerque-Los Alamos	25	3	20	41	46	3	15	4	34	54	3	18	2	21	29	47	23	11	4	4	9	3	17	8	1	9	1	2	457
	Anchorage	5	3	6	9	-	1	-	-	2	5	7	2	1	2	2	3	2	1	10	-	2	-	3	3	1	2	3	-	75
	China Lake	5	-	5	12	-	-	1	1	6	12	3	2	-	4	2	6	4	2	3	1	3	1	8	8	-	1	-	-	90
	Fort Huachuca	1	-	3	2	-	2	-	-	2	1	3	-	-	5	2	6	1	1	8	-	1	1	1	24	-	1	3	-	68
	Hawaii	11	2	7	9	1	3	-	2	4	7	3	5	-	6	5	9	7	3	15	-	1	-	3	5	3	4	3	-	118
	Las Vegas	1	-	2	1	9	-	1	2	3	7	-	-	1	3	1	2	-	3	1	-	-	-	-	2	-	-	-	-	39
	Los Angeles	397	75	447	877	145	122	264	124	519	779	480	488	147	566	688	1530	652	250	375	87	228	138	696	613	67	200	114	109	11,177
	Phoenix	22	3	17	38	4	13	18	6	25	25	25	21	7	24	53	107	41	16	28	5	15	7	31	32	3	10	5	2	603
	Portland	21	6	9	27	10	7	7	10	23	10	3	9	5	10	36	35	15	18	21	-	6	4	13	8	8	8	4	2	335
	Sacramento	12	10	9	9	4	9	5	6	8	5	3	1	7	10	4	14	7	3	9	3	2	2	3	6	4	5	4	-	164
	Salt Lake City	14	5	8	14	8	6	7	-	15	13	4	1	1	10	17	25	11	9	3	4	1	-	12	7	9	10	1	-	215
	San Diego	59	8	50	77	23	4	25	10	51	77	45	38	7	53	49	100	58	39	25	11	13	18	48	61	6	23	6	10	994
	San Francisco	218	54	257	476	95	60	92	64	197	302	126	224	74	286	547	575	517	143	241	37	58	80	260	224	48	73	50	28	5,406
	Seattle	57	14	96	87	26	27	19	14	49	74	43	36	19	45	46	87	86	30	52	9	14	3	65	39	12	22	18	6	1,095
	Tucson	10	2	16	28	2	7	4	4	12	22	12	13	4	27	14	22	15	7	21	1	1	3	15	19	2	3	12	5	303
			861	185	956	1707	375	264	459	248	954	1403	764	861	276	1080	1495	2582	1440	539	810	162	354	260	1179	1065	164	374	224	165

Section B. Table 7 - 1961 Professional Group Membership, by Group, by Region, by Section

REGION	SECTION	G-1	G-2	G-3	G-4	G-5	G-6	G-7	G-8	G-9	G-10	G-11	G-12	G-13	G-14	G-15	G-16	G-17	G-18	G-19	G-20	G-21	G-22	G-23	G-24	G-25	G-26	G-27	G-28	Total
8	Bay of Quinte	3	3	5	1	6	1	1	4	4	4	3	3	4	4	7	2	4	4	7	-	3	-	3	4	3	-	1	-	84
	Hamilton	10	3	3	7	1	2	3	6	1	5	3	3	2	2	5	4	6	2	8	3	2	-	5	2	2	1	1	-	92
	Kitchener-Waterloo	9	3	1	8	4	1	2	5	1	2	3	2	1	1	7	1	2	1	2	-	2	1	2	2	-	-	-	-	63
	London	6	3	3	6	2	1	-	5	1	3	5	2	1	1	5	7	4	2	2	1	1	-	2	4	4	1	-	-	72
	Montreal	47	22	42	53	11	13	14	15	24	22	34	14	18	21	28	52	41	25	40	7	10	12	45	20	12	13	7	6	668
	Newfoundland	-	-	-	1	-	-	-	-	-	1	-	-	-	-	-	-	-	-	-	-	-	-	-	-	-	-	-	-	2
	Northern Alberta	13	2	5	4	3	5	-	6	3	7	7	3	3	8	4	7	5	5	5	1	-	-	5	2	1	8	-	-	112
	Ottawa	22	10	32	29	12	8	10	16	19	16	17	18	5	13	23	29	33	10	43	5	10	5	16	35	5	11	9	4	465
	Quebec	12	3	16	10	4	2	3	7	5	4	5	5	2	4	2	9	9	1	8	1	2	2	3	1	4	4	2	1	131
	Regina	1	1	5	5	3	2	-	1	1	3	1	3	1	2	3	7	6	9	5	-	-	-	4	2	-	2	-	-	67
	Southern Alberta	7	3	3	1	2	3	1	-	1	3	2	-	1	1	-	6	2	2	1	2	-	-	-	1	2	-	-	-	44
	Toronto	62	21	28	42	10	25	10	29	26	21	25	11	21	24	26	41	25	37	38	4	16	19	26	17	8	23	5	4	644
	Vancouver	19	10	8	16	1	13	1	7	6	9	5	6	6	5	15	20	18	7	18	1	2	1	11	7	2	8	2	1	225
	Winnipeg	4	5	6	4	4	6	-	1	3	2	4	3	1	2	2	5	9	6	10	-	1	-	1	4	4	7	2	1	97
		215	89	157	187	63	82	45	102	95	102	114	73	66	88	127	190	164	111	187	25	49	40	123	101	47	78	29	17	2,766
	Benelux	22	5	19	38	14	7	11	8	18	10	14	32	14	10	24	43	18	9	42	5	8	3	23	16	5	4	3	3	428
	Buenos Aires	9	2	8	12	2	4	3	9	8	2	2	4	9	1	2	12	11	7	3	3	7	4	12	1	2	1	1	1	142
	Chile	3	-	2	2	-	1	-	-	1	1	1	1	3	-	1	2	2	1	2	1	-	-	2	1	1	-	1	-	29
	Colombia	8	7	12	5	1	6	1	4	4	2	3	2	3	2	7	4	2	11	1	2	2	1	2	3	1	4	1	-	103
	Egypt	-	-	-	3	2	-	-	1	1	1	-	-	-	-	1	1	-	-	1	-	-	-	3	-	-	-	-	-	14
	France	14	9	22	24	17	9	16	11	17	19	16	24	17	11	33	32	22	14	28	9	23	10	25	16	7	5	5	5	460
	Geneva	6	6	10	15	12	5	7	14	14	11	7	10	11	3	23	20	20	5	18	4	7	5	15	11	2	5	5	2	273
	India	5	1	7	20	6	-	1	5	11	3	7	8	8	-	12	12	12	1	7	1	2	1	9	2	3	1	-	1	146
	Israel	11	1	5	19	6	1	2	1	6	4	2	4	3	3	2	13	3	7	3	2	3	2	10	9	1	-	-	-	123
	Italy	15	6	18	45	16	9	12	14	16	10	13	32	16	8	32	64	29	8	27	6	21	12	24	13	4	5	5	5	485
	Rio de Janeiro	1	1	2	4	2	2	1	2	1	-	-	1	1	3	3	2	2	1	7	1	1	-	1	1	-	-	-	-	40
	Tokyo	37	37	77	83	32	28	39	49	45	50	45	66	45	28	111	89	103	45	47	38	37	28	61	37	18	24	23	22	1,344
		131	75	182	270	110	72	93	118	142	113	110	184	130	69	246	297	226	100	196	71	111	67	186	109	46	46	47	40	3,587

SECTION C Table 1 - IRE International Convention Statistics

The Convention continues to increase in importance each year and is internationally recognized as one of the largest conventions of its kind in the world. An exhibition of radio-electronic equipment became part of the annual convention activities in 1930. The growth in Convention activities, from the first convention held in 1926 through 1961, is indicated in the comparison figures itemized below:

Date	Year	Attendance	Firms Represented	Exhibits	Sq. Ft. Occupied	Papers Presented	Location
Jan. 18-19	1926	*	0	0	0	6	New York, N. Y.
Jan. 10-12	1927	425**	0	0	0	5	New York, N. Y.
Jan. 9-11	1928	800	0	0	0	9	New York, N. Y.
May 13-15	1929	555	0	0	0	37	Washington, D. C.
Aug. 18-21	1930	575	*	20**	*	23	Toronto, Canada
June 4-6	1931	400	*	50	*	19	Chicago, Ill.
April 7-9	1932	461	*	25**	*	23	Pittsburgh, Pa.
June 26-28	1933	487	*	35	*	24	Chicago, Ill.
May 28-30	1934	940	*	56	*	32	Philadelphia, Pa.
July 1-3	1935	586	*	34	*	21	Detroit, Mich.
May 11-13	1936	360	*	40	*	19	Cleveland, Ohio
May 10-12	1937	1,189	*	37	*	30	New York, N. Y.
May 15-17	1938	1,866	*	29	*	49	New York, N. Y.
Sept. 20-23	1939	1,668	*	34	*	26	New York, N. Y.
June 27-29	1940	1,071	*	35**	*	44	Boston, Mass.
Jan. 9-11	1941	1,310	*	30**	*	28	New York, N. Y.
June 23-25	1941	353	0	0	0	33	Detroit, Mich.
Jan. 12-14	1942	1,790	*	30**	*	25	New York, N. Y.
June 29-30,	1942	256	0	0	0	23	Cleveland, Ohio
July 1							
Jan. 28	1943	1,750	0	0	0	11	New York, N. Y.
Jan. 28-29	1944	1,704	0	0	0	22	New York, N. Y.
Jan. 24-27	1945	3,000	*	39	*	43	New York, N. Y.
Jan. 23-26	1946	7,200	1,571	135	13,200'***	88	New York, N. Y.
Mar. 3-6	1947	12,013	2,845	177	20,830'	118	New York, N. Y.
Mar. 22-25	1948	14,459	3,059	180	25,900'	130	New York, N. Y.
Mar. 7-10	1949	15,710	3,427	225	30,700'	144	New York, N. Y.
Mar. 6-9	1950	17,689	4,088	253	33,600'	163	New York, N. Y.
Mar. 19-22	1951	22,919	5,082	277	45,672'	198	New York, N. Y.
Mar. 3-6	1952	28,673	6,306	365	54,246'	211	New York, N. Y.
Mar. 23-26	1953	35,642	7,493	412	63,033'	214	New York, N. Y.
Mar. 22-25	1954	39,302	8,799	605	87,192'	242	New York, N. Y.
Mar. 21-24	1955	42,133	9,504	704	95,782'	248	New York, N. Y.
Mar. 19-22	1956	41,017***	8,851	716	98,684'	277	New York, N. Y.
Mar. 18-21	1957	53,811	11,757	840	105,240'	284	New York, N. Y.
Mar. 24-27	1958	55,811	12,555	950	110,828'	285	New York, N. Y.
Mar. 23-26	1959	60,050	13,509	1,200	114,117'	263	New York, N. Y.
Mar. 21-24	1960	69,760	15,889	1,200	113,597'	261	New York, N. Y.
Mar. 20-23	1961	67,451	15,170	1,237	113,711'	274	New York, N. Y.

* Figures not available ** Estimated *** Reduction in attendance due to blizzard

PROCEEDINGS OF THE IRE:

Plans for an extensive series of review and tutorial papers were initiated during the year, with the objective of publishing one to two such papers in every issue, starting early in 1962. Steps were also taken to reduce by three weeks the minimum time required for publishing letters to the editor. The Correspondence section, which has grown substantially in size and value during recent years, expanded from 280 letters in 1960 to 449 in 1961.

The year was highlighted by the appearance of two special issues of the PROCEEDINGS: "Electronic Computers" in January and "Plasma" in December. The total number of papers published, 131, was less than the previous year's total of 174 due to less bulky special issues. However, the total number of PROCEEDINGS editorial pages remained substantially the same, as shown in Table 1 and in Fig. 1.

Table 1 - Volume of PROCEEDINGS Pages

	1961	1960	1959	1958
Editorial	2234	2325	2370	2199
Advertising	2070	2485	2760	2169
	4304	4810	5130	4368

The number of papers reviewed for the PROCEEDINGS increased 13% to 292 papers totalling 2475 pages. Of these, 26% were accepted, 41% were referred to the TRANSACTIONS for publication consideration, and 33% were rejected. These ratios were approximately the same as in 1960.

Ten IRE Standards were published in the PROCEEDINGS, an increase of 3 over 1960. In addition, an index to the Abstracts and References section was provided as Part 2 of the May issue.

TRANSACTIONS:

The tenth anniversary of the TRANSACTIONS found the Professional Groups maintaining a high volume of publishing activity while increasing the selectivity and regularity of their publications. The number of papers and letters (1215) and the total pages (8336) published in TRANSACTIONS in 1961 represented half of the total IRE output of 2082 articles and 16,922 pages. Total pages are given in Fig. 2 and Table 2. It is noteworthy that 14 TRANSACTIONS appear quarterly and that 4 TRANSACTIONS are now published 6 times a year.

IRE CONVENTION RECORD:

The 1961 IRE INTERNATIONAL CONVENTION RECORD, published in 10 Parts, contained 241 papers and 16 abstracts totaling 2,164 pages. The IRE WESCON CONVENTION RECORD, which has appeared annually since 1957, was discontinued in 1961 by the WESCON Board of Directors.

IRE STUDENT QUARTERLY:

W. Reed Crone joined the IRE Headquarters staff as Student Affairs Secretary in September. His duties include assisting in the publication of the IRE STUDENT QUARTERLY. Four issues of the STUDENT QUARTERLY, totalling 224 pages, were sent free to IRE Student members during the year. In addition, approximately 24,000 free copies of the September issue were distributed to all non-IRE junior and senior electrical engineering students.

IRE DIRECTORY:

The 1962 IRE DIRECTORY, which was published in November, 1961, contained 1,612 pages including covers, of which 713 were membership listings and information and 899 were advertisements and listings of manufacturers and products.

IRE DICTIONARY:

A 242-page IRE Dictionary of Electronics Terms and Symbols, containing all definitions of terms and graphical and letter symbols which have appeared in IRE Standards over the past 18 years, was completed and issued in January, 1961.

Table 2 - Volume of TRANSACTIONS Pages, 1961

	Issues	Pages
Aerospace and Navigational Electronics	4	180
Antennas and Propagation	6	620
Audio	6	248
Automatic Control	3	384
Bio-Medical Electronics	4	292
Broadcast and Television Receivers	3	224
Broadcasting	4	184
Circuit Theory	4	532
Communications Systems	4	486
Component Parts	4	196
Education	4	196
Electron Devices	6	604
Electronic Computers	4	876
Engineering Management	4	240
Engineering Writing and Speech	3	116
Human Factors in Electronics	2	136
Industrial Electronics	2	92
Information Theory	4	324
Instrumentation	2	108
Microwave Theory and Techniques	6	620
Military Electronics	4	400
Nuclear Science	4	430
Product Engineering and Production	4	264
Radio Frequency Interference	1	52
Reliability and Quality Control	3	160
Space Electronics and Telemetry	4	140
Ultrasonics Engineering	1	40
Vehicular Communications	2	192
	<u>102</u>	<u>8336</u>

VOLUME OF TECHNICAL AND EDITORIAL MATTER
 PUBLISHED IN THE PROCEEDINGS OF THE IRE 1913-1961

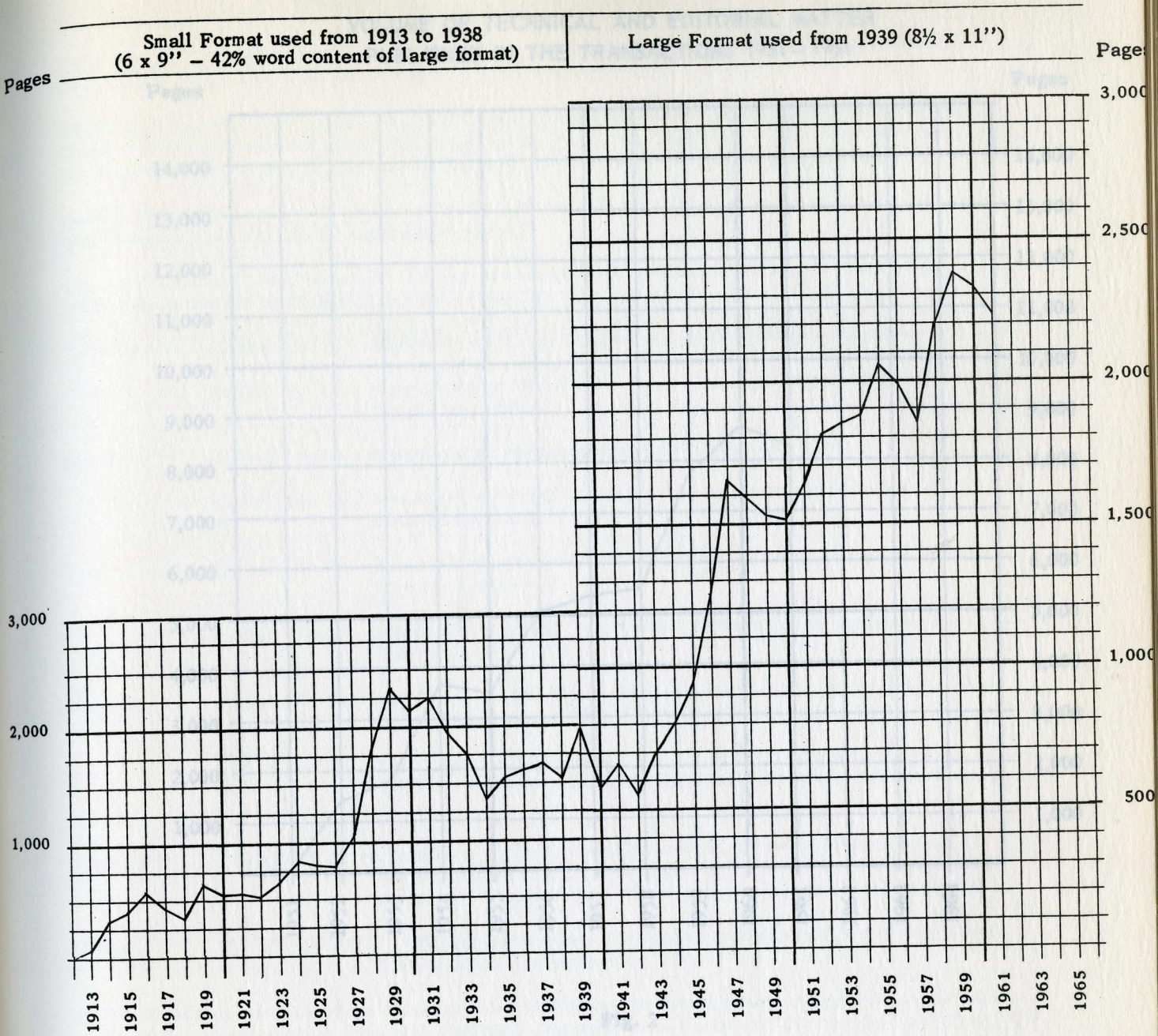


Fig. 1

VOLUME OF TECHNICAL AND EDITORIAL MATTER PUBLISHED IN THE TRANSACTIONS 1951 - 1961

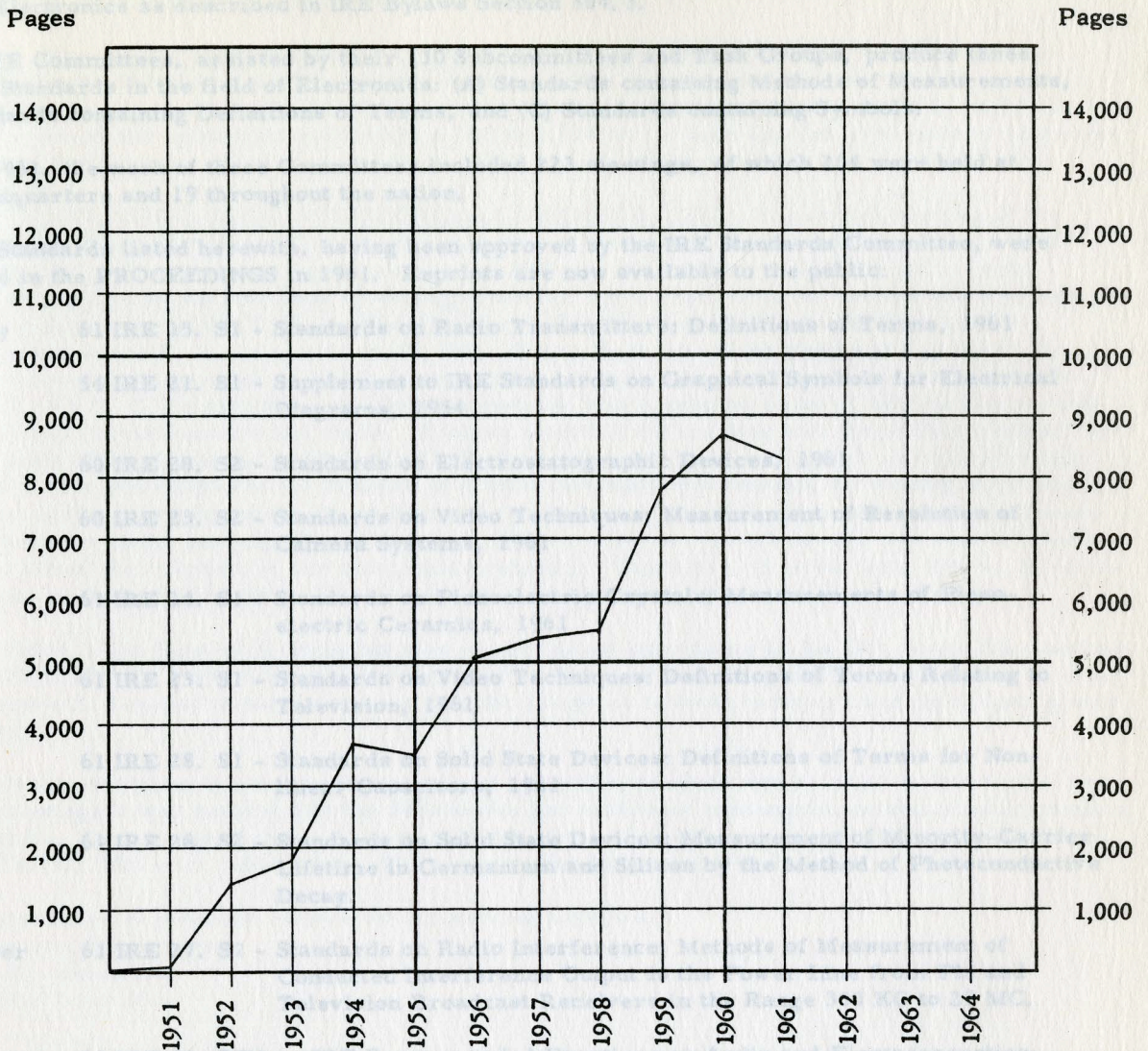


Fig. 2

IRE is directly represented on 16 Sectional Committees of the American Standards Association, of which IRE sponsors three: The ASA Sectional Committee on Radio and Electronic Equipment, C16; the ASA Sectional Committee on Sound Recording, S4; and the ASA Sectional Committee on Nuclear Instrumentation, N3. Two IRE Standards received approval by the American Standards Association in 1961, and are now available overseas through its international agency and 3 were reaffirmed as American Standards.

IRE Technical Committees participated in international standardization in 1961 by reviewing and preparing comments on documents for the United States National Committee of the International Electrotechnical Commission. In addition, IRE personnel were delegated to represent the United States at four international meetings held this year.

IRE/AIEE Joint Standards Committee: On October 1, 1960 the IRE Board of Directors approved the Resolution of the Joint IRE/AIEE Task Force regarding a Joint IRE/AIEE Standards Committee. Since that time the membership has been expanded and two meetings have been held. The committee has almost completed drawing up the by-laws and expects to distribute copies to its members very shortly. In addition, this committee has very properly acted as mediator in a situation where attempts at coordination of the work of its IRE committees and AIEE committees involved in the preparation of essentially the same type of Standards have failed up to the present time. It is the Joint Committee's intention to make the change of these Standards by both Institutes and resolve the differences between the two groups, if this becomes necessary. Several Standards

SECTION E - Table 1 - Technical Department Activities - 1961

TECHNICAL COMMITTEES. IRE sponsors 26 Technical Committees covering phases of the field of Electronics as described in IRE Bylaws Section 504.3.

These IRE Committees, assisted by their 130 Subcommittees and Task Groups, produce three types of Standards in the field of Electronics: (A) Standards containing Methods of Measurements, (B) Standards containing Definitions of Terms, and (C) Standards containing Symbols.

During 1961, the work of these Committees included 223 meetings, of which 204 were held at IRE Headquarters and 19 throughout the nation.

The ten Standards listed herewith, having been approved by the IRE Standards Committee, were published in the PROCEEDINGS in 1961. Reprints are now available to the public:

- February 61 IRE 15. S1 - Standards on Radio Transmitters: Definitions of Terms, 1961
 54 IRE 21. S1 - Supplement to IRE Standards on Graphical Symbols for Electrical Diagrams, 1954
- March 60 IRE 28. S2 - Standards on Electrostatographic Devices, 1961
 60 IRE 23. S2 - Standards on Video Techniques: Measurement of Resolution of Camera Systems, 1961
- July 61 IRE 14. S1 - Standards on Piezoelectric Crystals: Measurements of Piezoelectric Ceramics, 1961
 61 IRE 23. S1 - Standards on Video Techniques: Definitions of Terms Relating to Television, 1961
- August 61 IRE 28. S1 - Standards on Solid State Devices: Definitions of Terms for Non-linear Capacitors, 1961
 61 IRE 28. S2 - Standards on Solid State Devices: Measurement of Minority-Carrier Lifetime in Germanium and Silicon by the Method of Photoconductive Decay.
- September 61 IRE 27. S1 - Standards on Radio Interference: Methods of Measurement of Conducted Interference Output to the Power Line from FM and Television Broadcast Receivers in the Range 300 KC to 25 MC.
- October 61 IRE 30. RP1 - IRE Recommended Practices on Audio and Electroacoustics: Loudspeaker Measurements, 1961

IRE is directly represented on 36 Sectional Committees of the American Standards Association, of which IRE sponsors three: The ASA Sectional Committee on Radio and Electronic Equipment, C16; the ASA Sectional Committee on Sound Recording, S4; and the ASA Sectional Committee on Nuclear Instrumentation, N3. Two IRE Standards received approval by the American Standards Association in 1961, and are now available overseas through its international agency and 8 were reaffirmed as American Standards.

IRE Technical Committees participated in international standardization in 1961 by reviewing and preparing comments on documents for the United States National Committee of the International Electrotechnical Commission. In addition, IRE personnel were delegated to represent the United States at four international meetings held this year.

IRE/AIEE Joint Standards Committee: On October 5, 1960 the IRE Board of Directors approved the Resolution of the Joint IRE/AIEE Task Group regarding a joint IRE/AIEE Standards Committee. Since that time the membership has been established and two meetings have been held. The committee has almost completed drawing up its by-laws and expects to distribute copies to its members very shortly. In addition, this committee has very recently faced its first test as moderator in a situation where attempts at coordination of the work of an IRE committee and AIEE committee involved in the preparation of essentially the same type of Standard have failed up to the present time. It is the Joint Committee's intention to block the passage of these Standards by both Institutes and resolve the differences between the two groups, if this becomes necessary. Several Standards

prepared by joint subcommittees within the IRE and AIEE will shortly come before the Committee for approval as joint Standards. In conclusion, this committee is making slow but very definite progress in coordinating the Standards of the two Institutes.

IRE/EIA Joint International Standards Advisory Committee: This committee's formation was approved by the IRE Board of Directors in January, 1961. There has been one official meeting, at which forthcoming meetings of IEC Committee 12 and its Subcommittees 12A, 12B, and 12C were discussed and agreement reached that IRE and EIA would each appoint a delegate to represent the United States at the respective meetings. The results of these efforts are reported below.

THE INTERNATIONAL ELECTROTECHNICAL COMMISSION (IEC): The annual meeting of the International Electrotechnical Commission was held in Interlaken, Switzerland from June 18 to June 30, 1961. Of particular significance to the IRE was the meeting of IEC SC 12C - Radio Transmitting Equipment held June 19 through June 22, 1961. Mr. Eric M. Leyton was selected by IRE to act as one of the U. S. representatives to this meeting which was the first active participation of the U. S. delegation in SC 12C. There were occasions when some of the U. S. comments were not accepted or had to be withdrawn for technical or tactical reasons. However, all in all, the U. S. delegation concluded the meetings with a genuine sense of satisfaction in view of the definite contribution it had made. Another aspect of the meeting was the perfect professional relationship which developed between the U. S. delegation and the representatives of other countries, and which also contributed to the creation of a most favorable environment for making decisions. As reported by the Secretary of the U. S. National Committee of the IEC, "It is hard to overestimate the importance of the participation of the U. S. in committee work such as 12C and others, which directly affect the interests of our electronics industry. Therefore, it is our hope that U. S. active participation in the future work of these and other similar committees will be secured."

Not included in the General Meeting but also of very great importance to the IRE, were the meetings of TC12 and SC 12A Radio Communications, held in Paris, France August 31 to September 7, 1961. Mr. Gordon S. Ley participated as one of the US. delegates to these meetings and the following was reported:

Three documents were thoroughly discussed and general agreement was reached so that by the end of the meetings it was decided that the Secretariat had sufficient information so that it could prepare final drafts. In the case of three other documents, final editing was accomplished and turned over to the Central Office for publication. The program for future work includes:

- (1) Correlation of radiation results for the several systems
- (2) Acoustic Measurement
- (3) Radio stereophony
- (4) Color Television

Finally, the meeting of SC 12B on Safety was held in Hamar, Norway from August 20 to August 27, 1961 and as the IRE appointee to the U.S. delegation, Mr. Gordon S. Ley reported that several documents were discussed and recommendations made to the Secretariat. The work laid out for the Secretariat and Editing Committee is so extensive that it is not considered feasible to have a meeting next year so it was proposed to have the next meeting as part of the General Meeting in Venice in May 1963.

The program for future work includes:

Drip-proof and splash-proof apparatus requirements
Protection against fire in Ht supplies
Permissible temperatures on materials
Safety capacitor requirements
Testing against implosion danger
Stability testing for safety

In accordance with customary procedure, lists of all documents and material received in the Office of the IRE Technical Secretary from the IEC were distributed to the Chairmen of all Professional Groups, Technical Committees and the members of the Joint Technical Advisory Committee.

Joint Committee for Inter-Society Coordination (JCIC): The JCIC has been relatively inactive and held only one meeting during 1961. In 1960 the committee had requested that ASA call a conference of its Member-Bodies to discuss the desirability of forming a policy by ASA for the

minimizing of duplication of effort in developing standards on a subject of common interest to more than one group. This request has been taken under consideration by a special task group which has, in turn, referred it to the Board of Directors. Up to the present time no formal action has been taken by this group.

APPOINTED IRE DELEGATES TO OUTSIDE ORGANIZATIONS:

IRE appointed delegates to the following organizations for the one-year period - May 1, 1961, to April 30, 1962:

American Standards Association, Inc. (ASA) U. S. Advisory Committee of the International Organization for Standardization Technical Committee 69 on Statistical Treatment of Series of Observations (ISO/TC 69)

International Electrotechnical Commission (IEC) U. S. National Committee

International Radio Consultative Committee (CCIR) Executive Committee of U. S. Delegation

International Scientific Radio Union (URSI) Executive Committee, U. S. National Committee

Joint IRE-EIA-SMPTE-NAB Committee for Inter-Society Coordination (JCIC) (Television)

In addition, IRE appointed representatives to serve on the following organizations for the year 1961:

Council for the American Association for the Advancement of Science (AAAS)

National Academy of Sciences - National Research Council, Advisory Board of the Office of Critical Tables

National Bureau of Standards (NBS) IRE Technical Advisory Committee

National Bureau of Standards (NBS) Journal of Research

National Electronics Conference (NEC)

National Research Council (NRC) Division of Engineering and Industrial Research

During 1961, the Executive Committee of the U. S. National CCIR (International Radio Consultative Committee) held five meetings during which the representatives of the fourteen Study Groups summarized and reported on their activities. The Executive Committee formed an ad hoc committee for the purposes of making arrangements for the meetings of the International CCIR Study Groups IV and VIII to be held in Washington, D. C., March 12-23, 1962, prior to the 1962 IRE International Convention. Lists of all material received at IRE during 1961 were distributed quarterly to the Chairmen of the IRE Technical Committees and Professional Groups, as well as to the members of the Joint Technical Advisory Committee.

The Joint Annual Spring Meeting of the International Scientific Radio Union (URSI) and IRE was held in Washington, D. C., May 1-4, 1961. The Fall Meeting was held at the University of Texas, Austin, Texas, October 23-25, 1961. These meetings were co-sponsored by the IRE Professional Groups on Antennas and Propagation; Circuit Theory; Information Theory; Instrumentation; and Microwave Theory and Techniques.

The Plenary Session of the International Special Committee on Radio Interference (CISPR) was held at the University of Pennsylvania, Philadelphia, Pennsylvania, October 1-6, 1961. The PGRFI supported this meeting. Lists of documents received at IRE Headquarters during 1961 were distributed quarterly to the Chairmen of IRE Technical Committees and Professional Groups, as well as to the members of the Joint Technical Advisory Committee.

The Council for the American Association for the Advancement of Science (AAAS) held its 128th Annual Meeting December 26-31, 1961, in Denver, Colorado.

The National Bureau of Standards (NBS) IRE Technical Advisory Committee is divided into six groups. Individual group meetings have been held periodically during 1961.

The National Electronics Conference (NEC) held its Annual Meeting October 9 to 11, 1961, in Chicago. This meeting was sponsored by the AIEE, Illinois Institute of Technology, IRE, Northwestern University, the University of Illinois, et al.

THE JOINT TECHNICAL ADVISORY COMMITTEE (JTAC) OF IRE AND EIA:

The Joint Technical Advisory Committee held a total of nine meetings for the period July 1, 1960, through June 30, 1961. The Thirteenth Anniversary Dinner was held in May 1961 at The Waldorf Astoria, New York City.

The JTAC ad hoc Subcommittee 60.2 was established in July 1960 to study problems posed by the FCC's inquiry into the allocation of frequency bands for space communication of an industry-wide nature. The Subcommittee held four meetings. JTAC submitted its report "Frequency Allocations for Space Communications" to the FCC in March 1961.

JTAC representation was requested for the FCC UHF-TV Project for New York City. Representation from JTAC was also requested for the NAS Committee on Radio Frequency Allocations for Scientific Research, the U. S. counterpart of the Inter-Union Committee on Radio Frequency Allocations for Scientific Research which was formally established by the International Council of Scientific Unions (ICSU). This NAS Committee held three meetings during 1961. It submitted a report to Federal agencies entitled "Frequency Allocations for the Radio Astronomy Service - A Statement of Position."

The JTAC Annual Proceedings for 1960/1961, Volume XVIII, was published in November 1961. Section I of the Proceedings included official correspondence between the Federal Communications Commission and the Joint Technical Advisory Committee together with correspondence pertinent to the activities of the JTAC and the JTAC Report to the FCC on "Frequency Diversity Study." Section II of this Volume contained the approved Minutes of Meetings of the Joint Technical Advisory Committee held between July 1, 1960, through June 30, 1961.

State	71	72	73	74	75	76	77	78	79	80	81	82	83	84	85	86	87	88	89	90	91	92	93	94	95	96	97	98	99	00	01	02	03	04	05	06	07	08	09	10	11	12	13	14	15	16	17	18	19	20	21	22	23	24	25	26	27	28	29	30	31	32	33	34	35	36	37	38	39	40	41	42	43	44	45	46	47	48	49	50	51	52	53	54	55	56	57	58	59	60	61	62	63	64	65	66	67	68	69	70	71	72	73	74	75	76	77	78	79	80	81	82	83	84	85	86	87	88	89	90	91	92	93	94	95	96	97	98	99	00	01	02	03	04	05	06	07	08	09	10	11	12	13	14	15	16	17	18	19	20	21	22	23	24	25	26	27	28	29	30	31	32	33	34	35	36	37	38	39	40	41	42	43	44	45	46	47	48	49	50	51	52	53	54	55	56	57	58	59	60	61	62	63	64	65	66	67	68	69	70	71	72	73	74	75	76	77	78	79	80	81	82	83	84	85	86	87	88	89	90	91	92	93	94	95	96	97	98	99	00	01	02	03	04	05	06	07	08	09	10	11	12	13	14	15	16	17	18	19	20	21	22	23	24	25	26	27	28	29	30	31	32	33	34	35	36	37	38	39	40	41	42	43	44	45	46	47	48	49	50	51	52	53	54	55	56	57	58	59	60	61	62	63	64	65	66	67	68	69	70	71	72	73	74	75	76	77	78	79	80	81	82	83	84	85	86	87	88	89	90	91	92	93	94	95	96	97	98	99	00	01	02	03	04	05	06	07	08	09	10	11	12	13	14	15	16	17	18	19	20	21	22	23	24	25	26	27	28	29	30	31	32	33	34	35	36	37	38	39	40	41	42	43	44	45	46	47	48	49	50	51	52	53	54	55	56	57	58	59	60	61	62	63	64	65	66	67	68	69	70	71	72	73	74	75	76	77	78	79	80	81	82	83	84	85	86	87	88	89	90	91	92	93	94	95	96	97	98	99	00	01	02	03	04	05	06	07	08	09	10	11	12	13	14	15	16	17	18	19	20	21	22	23	24	25	26	27	28	29	30	31	32	33	34	35	36	37	38	39	40	41	42	43	44	45	46	47	48	49	50	51	52	53	54	55	56	57	58	59	60	61	62	63	64	65	66	67	68	69	70	71	72	73	74	75	76	77	78	79	80	81	82	83	84	85	86	87	88	89	90	91	92	93	94	95	96	97	98	99	00	01	02	03	04	05	06	07	08	09	10	11	12	13	14	15	16	17	18	19	20	21	22	23	24	25	26	27	28	29	30	31	32	33	34	35	36	37	38	39	40	41	42	43	44	45	46	47	48	49	50	51	52	53	54	55	56	57	58	59	60	61	62	63	64	65	66	67	68	69	70	71	72	73	74	75	76	77	78	79	80	81	82	83	84	85	86	87	88	89	90	91	92	93	94	95	96	97	98	99	00	01	02	03	04	05	06	07	08	09	10	11	12	13	14	15	16	17	18	19	20	21	22	23	24	25	26	27	28	29	30	31	32	33	34	35	36	37	38	39	40	41	42	43	44	45	46	47	48	49	50	51	52	53	54	55	56	57	58	59	60	61	62	63	64	65	66	67	68	69	70	71	72	73	74	75	76	77	78	79	80	81	82	83	84	85	86	87	88	89	90	91	92	93	94	95	96	97	98	99	00	01	02	03	04	05	06	07	08	09	10	11	12	13	14	15	16	17	18	19	20	21	22	23	24	25	26	27	28	29	30	31	32	33	34	35	36	37	38	39	40	41	42	43	44	45	46	47	48	49	50	51	52	53	54	55	56	57	58	59	60	61	62	63	64	65	66	67	68	69	70	71	72	73	74	75	76	77	78	79	80	81	82	83	84	85	86	87	88	89	90	91	92	93	94	95	96	97	98	99	00	01	02	03	04	05	06	07	08	09	10	11	12	13	14	15	16	17	18	19	20	21	22	23	24	25	26	27	28	29	30	31	32	33	34	35	36	37	38	39	40	41	42	43	44	45	46	47	48	49	50	51	52	53	54	55	56	57	58	59	60	61	62	63	64	65	66	67	68	69	70	71	72	73	74	75	76	77	78	79	80	81	82	83	84	85	86	87	88	89	90	91	92	93	94	95	96	97	98	99	00	01	02	03	04	05	06	07	08	09	10	11	12	13	14	15	16	17	18	19	20	21	22	23	24	25	26	27	28	29	30	31	32	33	34	35	36	37	38	39	40	41	42	43	44	45	46	47	48	49	50	51	52	53	54	55	56	57	58	59	60	61	62	63	64	65	66	67	68	69	70	71	72	73	74	75	76	77	78	79	80	81	82	83	84	85	86	87	88	89	90	91	92	93	94	95	96	97	98	99	00	01	02	03	04	05	06	07	08	09	10	11	12	13	14	15	16	17	18	19	20	21	22	23	24	25	26	27	28	29	30	31	32	33	34	35	36	37	38	39	40	41	42	43	44	45	46	47	48	49	50	51	52	53	54	55	56	57	58	59	60	61	62	63	64	65	66	67	68	69	70	71	72	73	74	75	76	77	78	79	80	81	82	83	84	85	86	87	88	89	90	91	92	93	94	95	96	97	98	99	00	01	02	03	04	05	06	07	08	09	10	11	12	13	14	15	16	17	18	19	20	21	22	23	24	25	26	27	28	29	30	31	32	33	34	35	36	37	38	39	40	41	42	43	44	45	46	47	48	49	50	51	52	53	54	55	56	57	58	59	60	61	62	63	64	65	66	67	68	69	70	71	72	73	74	75	76	77	78	79	80	81	82	83	84	85	86	87	88	89	90	91	92	93	94	95	96	97	98	99	00	01	02	03	04	05	06	07	08	09	10	11	12	13	14	15	16	17	18	19	20	21	22	23	24	25	26	27	28	29	30	31	32	33	34	35	36	37	38	39	40	41	42	43	44	45	46	47	48	49	50	51	52	53	54	55	56	57	58	59	60	61	62	63	64	65	66	67	68	69	70	71	72	73	74	75	76	77	78	79	80	81	82	83	84	85	86	87	88	89	90	91	92	93	94	95	96	97	98	99	00	01	02	03	04	05	06	07	08	09	10	11	12	13	14	15	16	17	18	19	20	21	22	23	24	25	26	27	28	29	30	31	32	33	34	35	36	37	38	39	40	41	42	43	44	45	46	47	48	49	50	51	52	53	54	55	56	57	58	59	60	61	62	63	64	65	66	67	68	69	70	71	72	73	74	75	76	77	78	79	80	81	82	83	84	85	86	87	88	89	90	91	92	93	94	95	96	97	98	99	00	01	02	03	04	05	06	07	08	09	10	11	12	13	14	15	16	17	18	19	20	21	22	23	24	25	26	27	28	29	30	31
-------	----	----	----	----	----	----	----	----	----	----	----	----	----	----	----	----	----	----	----	----	----	----	----	----	----	----	----	----	----	----	----	----	----	----	----	----	----	----	----	----	----	----	----	----	----	----	----	----	----	----	----	----	----	----	----	----	----	----	----	----	----	----	----	----	----	----	----	----	----	----	----	----	----	----	----	----	----	----	----	----	----	----	----	----	----	----	----	----	----	----	----	----	----	----	----	----	----	----	----	----	----	----	----	----	----	----	----	----	----	----	----	----	----	----	----	----	----	----	----	----	----	----	----	----	----	----	----	----	----	----	----	----	----	----	----	----	----	----	----	----	----	----	----	----	----	----	----	----	----	----	----	----	----	----	----	----	----	----	----	----	----	----	----	----	----	----	----	----	----	----	----	----	----	----	----	----	----	----	----	----	----	----	----	----	----	----	----	----	----	----	----	----	----	----	----	----	----	----	----	----	----	----	----	----	----	----	----	----	----	----	----	----	----	----	----	----	----	----	----	----	----	----	----	----	----	----	----	----	----	----	----	----	----	----	----	----	----	----	----	----	----	----	----	----	----	----	----	----	----	----	----	----	----	----	----	----	----	----	----	----	----	----	----	----	----	----	----	----	----	----	----	----	----	----	----	----	----	----	----	----	----	----	----	----	----	----	----	----	----	----	----	----	----	----	----	----	----	----	----	----	----	----	----	----	----	----	----	----	----	----	----	----	----	----	----	----	----	----	----	----	----	----	----	----	----	----	----	----	----	----	----	----	----	----	----	----	----	----	----	----	----	----	----	----	----	----	----	----	----	----	----	----	----	----	----	----	----	----	----	----	----	----	----	----	----	----	----	----	----	----	----	----	----	----	----	----	----	----	----	----	----	----	----	----	----	----	----	----	----	----	----	----	----	----	----	----	----	----	----	----	----	----	----	----	----	----	----	----	----	----	----	----	----	----	----	----	----	----	----	----	----	----	----	----	----	----	----	----	----	----	----	----	----	----	----	----	----	----	----	----	----	----	----	----	----	----	----	----	----	----	----	----	----	----	----	----	----	----	----	----	----	----	----	----	----	----	----	----	----	----	----	----	----	----	----	----	----	----	----	----	----	----	----	----	----	----	----	----	----	----	----	----	----	----	----	----	----	----	----	----	----	----	----	----	----	----	----	----	----	----	----	----	----	----	----	----	----	----	----	----	----	----	----	----	----	----	----	----	----	----	----	----	----	----	----	----	----	----	----	----	----	----	----	----	----	----	----	----	----	----	----	----	----	----	----	----	----	----	----	----	----	----	----	----	----	----	----	----	----	----	----	----	----	----	----	----	----	----	----	----	----	----	----	----	----	----	----	----	----	----	----	----	----	----	----	----	----	----	----	----	----	----	----	----	----	----	----	----	----	----	----	----	----	----	----	----	----	----	----	----	----	----	----	----	----	----	----	----	----	----	----	----	----	----	----	----	----	----	----	----	----	----	----	----	----	----	----	----	----	----	----	----	----	----	----	----	----	----	----	----	----	----	----	----	----	----	----	----	----	----	----	----	----	----	----	----	----	----	----	----	----	----	----	----	----	----	----	----	----	----	----	----	----	----	----	----	----	----	----	----	----	----	----	----	----	----	----	----	----	----	----	----	----	----	----	----	----	----	----	----	----	----	----	----	----	----	----	----	----	----	----	----	----	----	----	----	----	----	----	----	----	----	----	----	----	----	----	----	----	----	----	----	----	----	----	----	----	----	----	----	----	----	----	----	----	----	----	----	----	----	----	----	----	----	----	----	----	----	----	----	----	----	----	----	----	----	----	----	----	----	----	----	----	----	----	----	----	----	----	----	----	----	----	----	----	----	----	----	----	----	----	----	----	----	----	----	----	----	----	----	----	----	----	----	----	----	----	----	----	----	----	----	----	----	----	----	----	----	----	----	----	----	----	----	----	----	----	----	----	----	----	----	----	----	----	----	----	----	----	----	----	----	----	----	----	----	----	----	----	----	----	----	----	----	----	----	----	----	----	----	----	----	----	----	----	----	----	----	----	----	----	----	----	----	----	----	----	----	----	----	----	----	----	----	----	----	----	----	----	----	----	----	----	----	----	----	----	----	----	----	----	----	----	----	----	----	----	----	----	----	----	----	----	----	----	----	----	----	----	----	----	----	----	----	----	----	----	----	----	----	----	----	----	----	----	----	----	----	----	----	----	----	----	----	----	----	----	----	----	----	----	----	----	----	----	----	----	----	----	----	----	----	----	----	----	----	----	----	----	----	----	----	----	----	----	----	----	----	----	----	----	----	----	----	----	----	----	----	----	----	----	----	----	----	----	----	----	----	----	----	----	----	----	----	----	----	----	----	----	----	----	----	----	----	----	----	----	----	----	----	----	----	----	----	----	----	----	----	----	----	----	----	----	----	----	----	----	----	----	----	----	----	----	----	----	----	----	----	----	----	----	----	----	----	----	----	----	----	----	----	----	----	----	----	----	----	----	----	----	----	----	----	----	----	----	----	----	----	----	----	----	----	----	----	----	----	----	----	----	----	----	----	----	----	----	----	----	----	----	----	----	----	----	----	----	----	----	----	----	----	----	----	----	----	----	----	----	----	----	----	----	----	----	----	----	----	----	----	----	----	----	----	----	----	----	----	----	----	----	----	----	----	----	----	----	----	----	----	----	----	----	----	----	----	----	----	----	----	----	----	----	----	----	----	----	----	----	----	----	----	----	----	----	----	----	----	----	----	----	----	----	----	----	----	----	----	----	----	----	----	----	----	----	----	----	----	----	----	----	----	----	----	----	----	----	----	----	----	----	----	----	----	----	----	----	----	----	----	----	----	----	----	----	----	----	----	----	----	----	----	----	----	----	----	----	----	----	----	----	----	----	----	----	----	----	----	----	----	----	----	----	----	----	----	----	----	----	----	----	----	----	----	----	----	----	----	----	----	----	----	----	----	----	----	----	----	----	----	----	----	----	----	----	----	----	----	----	----	----	----	----	----	----	----	----	----	----	----	----	----	----	----	----	----	----	----	----	----	----	----	----	----	----	----	----	----	----	----	----	----	----	----	----	----	----	----	----	----	----	----	----	----	----	----	----	----	----	----	----	----	----	----	----	----	----	----	----	----	----	----	----	----	----	----	----	----	----	----	----	----	----	----	----	----	----	----	----	----	----	----	----	----	----	----	----	----	----	----	----	----	----	----	----	----	----	----	----	----	----	----	----	----	----	----	----	----	----	----	----	----	----	----	----	----	----	----	----	----	----	----	----	----	----	----	----	----	----	----	----	----	----	----	----	----	----	----	----	----	----	----	----	----	----	----	----	----	----	----	----	----	----

SECTION F. Table I - Section and Subsection Meetings and Membership - 1960-1961

		MEETINGS **						MEMBERSHIP			
Region	Section	1960			1961			1960		1961	
		Section	PG	Total	Section	PG	Total	Sub-Section	Section Total	Sub-Section	Section Total
1	Binghamton	8	4	12	7	3	10		527		539
	Boston	4	62	86	3	71	92		5,957		6,477
	Merrimack V. S.	7	-		8	-		569		654	
	New Hamp. S.	5	-		4	-		230		260	
	No. Vermont S.	8	-		6	-		59		66	
	Buffalo-Niagara	8	4	12	8	2	10		413		499
	Connecticut	10	0	18	10	0	13		1,260		1,389
	Fairfield Cty. S.	8	-		3	-		569		666	
	Elmira-Corning	8	0	8	11	0	11		216		244
	Erie	5	0	5	7	0	7		57		60
	Erie	7	0	7	7	0	7		176		230
	Ithaca	7	0	7	7	0	7		176		230
	Rochester	10	2	12	9	2	11		579		629
	Rome-Utica	7	8	15	12	12	24		579		604
	Schenectady	10	0	10	3	5	8		474		496
	Syracuse	5	20	25	5	14	19		1,064		1,193
	Western Mass.	5	0	5	7	0	7		276		312
		115	100	215	110	109	219		11,578		12,672
2	Long Island	22	15	37	15	13	28		4,494		4,880
	New York	8	56	89	6	40	72		5,438		5,826
	Catskill S.	3	-		7	-		197		219	
	Mid-Hudson S.	8	-		6	-		633		649	
	Monmouth S.	7	-		5	-		626		703	
	Westchester S.	7	-		8	-		883		961	
	No. New Jersey	9	7	16	9	13	22		4,108		4,251
	Princeton	7	0	7	7	0	7		832		910
		71	78	149	63	66	129		14,872		15,867
	3	Atlanta	11	8	19	10	3	13		713	
Baltimore		7	17	24	8	24	32		1,567		1,846
Canaveral		10	1	11	11	1	12		499		551
Florida W. Coast		10	13	23	14	14	28		421		441
Gainesville		8	0	8	8	0	8		262		241
Huntsville		11	0	20	9	4	22		649		787
Memphis S.		9	-		4	-		64		95	
Nashville S.		0	-		5	-		109		95	
Miami		9	0	9	8	0	16		305		350
* Palm Beach S.			-		8	-				52	
Mobile		2	0	2	5	0	5		71		79
North Carolina		11	3	31	6	1	23		670		700
Eastern N. C. S.		8	-		7	-		184		202	
Western N. C. S.		9	-		9	-		65		72	
Northwest Fla.		10	3	19	6	2	11		195		188
Panama City S.		6	-		3	-		41		39	
Orlando		10	0	10	5	6	11		374		405
Philadelphia		7	58	87	9	58	84		4,897		5,243
Lancaster S.		7	-		7	-		199		200	
Lehigh Val. S.		9	-		5	-		223		244	
Reading S.		6	-		5	-		81		85	
South Carolina		8	0	8	9	0	9		207		232
Virginia	15	0	15	15	0	15		651		664	
Washington	9	53	62	8	49	57		3,745		3,965	
	192	156	348	184	162	346		15,226		16,567	

Section F. Table I - Section and Subsection Meetings and Membership - 1960, 1961

		MEETINGS **						MEMBERSHIP			
Region	Section	1960			1961			1960		1961	
		Section	PG	Total	Section	PG	Total	Sub-Section	Section Total	Sub-Section	Section Total
4	Akron	10	2	12	7	3	10		321		346
	Central Pa.	8	0	8	8	0	8		270		282
	Cincinnati	12	0	12	9	0	9		475		415
	Cleveland	8	7	15	4	4	8		594		632
	Columbus	13	15	28	12	14	26		422		492
	Dayton	5	11	16	8	20	28		849		1,067
	Detroit	9	15	24	9	11	20		1,299		1,359
	Emporium	12	0	12	12	0	12		150		153
	Pittsburgh	10	4	14	10	9	19		898		939
	Toledo	8	0	8	7	0	7		172		186
	Western Mich.	5	0	5	8	0	8		128		161
	Williamsport	7	0	7	4	0	4		60		59
			107	54	161	98	61	159		5,638	
5	Cedar Rapids	10	0	13	6	0	8		756		721
	Burlington S.	3	-	-	2	-	-	29		32	
	Chicago	8	46	54	9	46	55		3,374		3,584
	Evansville-Owens.	10	0	10	9	0	9		166		175
	Fort Wayne	9	0	9	9	0	9		280		247
	Indianapolis	11	1	12	9	0	9		610		675
	Louisville	3	0	3	0	0	0		196		205
	Louisville	3	0	3	0	0	0		972		977
	Milwaukee	7	4	11	8	3	11		274		397
	Omaha-Lincoln	4	12	16	9	27	36		263		219
	South Bend-Mish.	7	0	7	8	0	8		1,104		1,232
	Twin Cities	4	8	12	8	3	11		7,995		8,432
			76	71	147	77	79	156			
6	Beaumont-Pt. A.	9	0	9	11	0	11		174		145
	Dallas	18	1	19	16	4	20		1,159		1,271
	Denver	9	4	15	3	0	6		849		945
	Pikes Peak S.	2	-	-	3	-	-	52		59	
	El Paso	9	0	10	11	0	11		232		294
	Las Cruces-										
	White Sands S.	1	-	-	0	-	-	85		127	
	Fort Worth	9	8	17	9	10	19		395		430
	Houston	6	9	15	9	6	15		671		685
	Houston	6	9	15	9	6	15		627		686
	Kansas City	11	0	11	10	0	10		627		686
	Little Rock	8	0	8	8	0	8		139		138
	Little Rock	8	0	8	8	0	8		100		110
	Lubbock	9	0	9	8	0	8		258		313
	New Orleans	5	0	5	5	0	5		349		323
	Oklahoma City	10	8	18	8	6	14		742		781
	St. Louis	8	0	8	9	0	9		426		473
	San Antonio-Austin	16	0	16	10	0	10		75		80
	Shreveport	10	0	10	9	0	9		272		172
	Tulsa	7	0	7	8	0	8		184		193
Wichita	9	0	9	5	0	5		6,652		7,039	
		156	30	186	142	26	168				

Section F. Table I - Section and Subsection Meetings and Membership - 1960, 1961

Region	Section	MEETINGS **						MEMBERSHIP			
		1960			1961			1960		1961	
		Section	PG	Total	Section	PG	Total	Sub-Section	Section Total	Sub-Section	Section Total
7	Alamogordo-										
	Holloman	9	0	9	9	0	9		110		114
	Albuquerque-	11	7	18	9	15	24		685		701
	Los Alamos										
	Anchorage	10	0	10	6	0	6		123		142
	China Lake	8	0	8	5	0	5		117		121
	Fort Huachuca	9	0	9	8	2	10		98		99
	Hawaii	10	0	10	10	0	10		139		192
	Las Vegas	6	0	6	4	0	4		68		82
	Los Angeles	9	114	177	10	109	176		9,126		10,352
	Buenaventura S.	8	-	-	8	-	-	193		211	
*	Crescent Bay S.	-	-	-	3	-	-	-		1,630	
	Orange Belt S.	7	6	-	5	8	-	683		785	
	Pasadena S.	9	-	-	7	-	-	699		789	
	San Fernando S.	7	-	-	7	-	-	1,772		1,869	
	Santa Ana S.	9	-	-	8	5	-	1,572		1,982	
	Santa Barbara S.	8	-	-	6	-	-	397		504	
	Phoenix	6	0	6	2	0	2		644		732
	Portland	12	6	18	9	5	14		416		433
	Sacramento	9	0	9	8	0	8		269		279
	Salt Lake City	5	0	5	7	0	7		396		473
	San Diego	10	4	14	10	14	24		898		1,041
	San Francisco	9	104	117	2	102	107		4,359		5,046
	East Bay S.	4	-	-	3	-	-	645		782	
	Seattle	10	0	15	10	5	23		1,315		1,505
	Richland S.	5	-	-	8	-	-	109		139	
	Tucson	10	0	10	6	0	6		274		286
		<u>200</u>	<u>241</u>	<u>441</u>	<u>170</u>	<u>265</u>	<u>435</u>		<u>19,037</u>		<u>21,598</u>
8	Bay of Quinte	8	0	8	7	0	7		149		120
	Hamilton	12	0	12	8	0	8		152		130
	Kitchener-Waterloo	4	0	4	7	0	7		71		83
	London	7	0	7	8	0	16		122		149
	S. W. Ontario S.	0	-	-	8	-	-	29		46	
	Montreal	8	1	9	3	0	3		721		762
	Newfoundland	1	0	1	0	0	0		30		20
	No. Alberta	10	0	10	6	0	6		200		200
	Ottawa	8	0	8	8	1	9		540		537
	Quebec	8	0	8	7	0	7		159		171
	Regina	5	0	5	7	0	7		114		123
	So. Alberta	6	0	6	5	0	5		186		167
	Toronto	10	2	12	12	5	17		750		763
	Vancouver	9	1	10	10	0	14		275		364
	* Victoria S.	0	-	-	4	-	-			29	
	Winnipeg	6	0	6	10	0	10		163		169
		<u>102</u>	<u>4</u>	<u>106</u>	<u>110</u>	<u>6</u>	<u>116</u>		<u>3,632</u>		<u>3,758</u>

* The 1960 Secretary Subsequent to publication for the year 1960 were submitted to KJ. Headquarters, changing the total of meetings for 1960 to 1,544.

Section F. Table I - Section and Subsection Meetings and Membership - 1960, 1961

Region	Section	MEETINGS **						MEMBERSHIP			
		1960			1961			1960		1961	
		Section	PG	Total	Section	PG	Total	Sub-Section	Section Total	Sub-Section	Section Total
	Benelux	9	0	9	7	0	7		146		185
	Buenos Aires	19	0	19	0	0	0		171		228
	* Chile	-	-	-	0	0	0		-		45
	Colombia	0	0	0	7	0	7		39		83
	Egypt	5	0	5	3	0	3		28		38
	* France	-	-	-	0	0	0		-		168
	Geneva	0	0	0	5	0	5		107		134
	India	0	0	0	0	0	0		199		227
	Israel	5	0	5	2	0	2		90		96
	Italy	6	0	6	0	0	0		222		395
	Rio de Janeiro	6	0	6	5	0	5		50		55
	Tokyo	6	1	7	3	0	3		369		413
		56	1	57	32	0	32		1,421		2,067

* Established during 1961

** As reported to IRE Headquarters 12/29/61

RECAPITULATION

1961										
Region	1	2	3	4	5	6	7	8	Other	Totals
Sections	12	4	15	12	10	16	16	14	12	111
Subsections	4	4	9	-	1	2	9	2	-	31
Membership	12,672	15,867	16,567	6,091	8,432	7,039	21,598	3,758	2,067	94,091
Section Meetings	110	63	184	98	77	142	170	110	32	986
PG Meetings	109	66	162	61	79	26	265	6	0	774
Total Meetings	219	129	346	159	156	168	435	116	32	1,760

1960										
Region	1	2	3	4	5	6	7	8	Other	Totals
Sections	12	4	15	12	10	16	16	14	10	109
Subsections	4	4	8	-	1	2	8	1	-	28
Membership	11,578	14,872	15,226	5,638	7,995	6,652	19,037	3,632	1,421	86,051
Section Meetings	115	71	192	107	76	156	200	102	56	1,075
PG Meetings	100	78	156	54	71	30	241	4	1	735
Total Meetings	215	149	348	161	147	186	441	106	57	1,810*

* The 1960 IRE Secretary's Report indicated a total of 1,504 meetings. Subsequent to publication of that report, 296 additional meeting reports for the year 1960 were submitted to IRE Headquarters, changing the total of meetings for 1960 to 1,810.

SECTION F. Table 2 - Professional Group Chapter Meetings, by Section, by Group - 1960, 1961 *

Section		1	2	3	4	5	6	7	8	9	10	11	12	13	14	15	16	17	18	19	20	21	22	23	24	25	26	27	28	Totals
Akron	1961			0								1					2						0						3	
	1960			2								0					0						0						2	
Alamogordo-	1961																												-	
Holloman	1960																												-	
Albuquerque-	1961	2		1	1	1a					5							3											13	
Los Alamos	1961					2a																							2	
Albuquerque-	1960	2		0	1	0a					0							2											5	
Los Alamos	1960					2a																							2	
Anchorage	1961																												-	
	1960																												-	
Atlanta	1961					2				1																			3	
	1960					8																							8	
Baltimore	1961	1		0b								0	2		5		3	6b	1	0			2	4	0				24	
	1960	2					0					0			0		1	5	0	0		2	7	0					17	
Bay of Quinte	1961																												-	
	1960																												-	
Beaumont-	1961																												-	
Port Arthur	1960																												-	
Benelux	1961																												-	
	1960																												-	
Binghamton	1961						0								0		3												3	
	1960														0		4												4	
Boston	1961	2		7		0	4				4	3		5	5	6	8	5	0				5	6	5		6		71	
	1960	1	1	6		1	6				4	3		6	4	7	3	4					5	2	6		3		62	
Buenos Aires	1961																												-	
	1960																												-	
Buffalo-	1961			1c													0c	1				0			0				2	
Niagara	1960			0c													1c	2				1			0				4	
Cedar Rapids	1961																												-	
	1960																												-	
Canaveral	1961										1														0				1	
	1960										1														0				1	
Central	1961			0																									0	
Pennsylvania	1960																												-	
Chicago	1961	7	0	0	2	3	4	4	2	2	1			2	1		1	3	2	2		2		5	2		1	0	46	
	1960	6	0	6	4	0	2	1	3	2	0			2	2		2	6	2	2		1		2	2		1		46	
Chile	1961																												-	
	1960																												-	
China Lake	1961																												-	
	1960																												-	

Section F. Table 2 - Professional Group Chapter Meetings, by Section, by Group - 1960, 1961 *

Section		1	2	3	4	5	6	7	8	9	10	11	12	13	14	15	16	17	18	19	20	21	22	23	24	25	26	27	28	Totals
Cincinnati	1961	0																												0
	1960	0																												0
Cleveland	1961	0	1			0								0					3											4
	1960	1	3											1					2											7
Colombia	1961																													-
	1960																													-
Columbus	1961			0d				3									6d		5											14
	1960			5d				4									6d		0											15
Connecticut	1961					0																								0
	1960					0																								0
Dallas	1961					0											0e							4f						4
	1960					0											0e							1f						1
Dayton	1961	2		2		1					1	1			5		4					2				2				20
	1960	1		0		1					0	1			2		2					1				3				11
Denver	1961			0							0							0												0
	1960			2														2												4
Detroit	1961					5					1						4								1					11
	1960					5					4						5								1					15
Egypt	1961																													-
	1962																													-
Elmira-	1961															0														0
Corning	1960															0														0
El Paso	1961												0																	0
	1960												0																	0
Emporium	1961																													-
	1960																													-
Erie	1961																													-
	1960																													-
Evansville-	1961																													-
Owensboro	1960																													-
Florida	1961		2			1	0		0		7						3		1					0						14
West Coast	1960		6			1	2				2													0						13
Fort	1961																								2g					2
Huachuca	1960																								0g					0
Fort Wayne	1961																							0						0
	1960																							0						0
Fort Worth	1961						4										3							0			3			10
	1960						0										3						1				4			8
France	1961																													-
	1960																													-
Gainesville	1961																													-
	1960																													-

Section F. Table 2 - Professional Group Chapter Meetings, by Section, by Group - 1960, 1961*

Section		1	2	3	4	5	6	7	8	9	10	11	12	13	14	15	16	17	18	19	20	21	22	23	24	25	26	27	28	Totals	
Geneva	1961																													-	
	1960																														-
Hamilton	1961																														-
	1960																														0
Hawaii	1961	0																		0										0	
	1960	0															0		2			2								6	
Houston	1961	0	0		1		0			1							2		2											9	
	1960	0	3		1		1			0							2		2											4	
Huntsville	1961										0								4h											0	
	1960										0								0h											-	
India	1961																													-	
	1960																								0						0
Indianapolis	1961																								1						1
	1960																														-
Israel	1961																														-
	1960																														-
Italy	1961																														-
	1961																														-
Ithaca	1961																														-
	1960																														-
Kansas City	1961												0																		0
	1960																														-
Kitchener-Waterloo	1961																														-
	1960																														-
Las Vegas	1961																														-
	1960																														-
Little Rock	1961																														-
	1960																														-
London	1961																														-
	1960																						0	0	2	4			0		13
Long Island	1961						0	0		0		0			0	0	3	4	0			0	0	1	4					15	
	1960						0	0		2		0			0	0	2	6	0			0									-
Los Angeles	1961			6	4	6	9	9		5	7		2		4	4	6	6	6	5		6	3	8	5		2	1	5	109	
	1961			8i															0i												8
	1961			0j													5k	0j													5
Los Angeles	1960			6	5	4	9	10	0	9	7		5		1	8	10	5	7	3		7	3	9	4		2		0	114	
	1960			6i														0i													6
Louisville	1961																														-
	1960																														-
Lubbock	1961																														-
	1960																														-

Section F. Table 2 - Professional Group Chapter Meetings, by Section, by Group - 1960, 1961 *

Section		1	2	3	4	5	6	7	8	9	10	11	12	13	14	15	16	17	18	19	20	21	22	23	24	25	26	27	28	Totals
Miami	1961																													-
	1960																													-
Milwaukee	1961	2																	0					1						3
	1960	2																						2						4
Mobile	1961																													-
	1960																													-
Montreal	1961															0			0											0
	1960															0			1											1
Newfound-land	1961																													-
	1960																													-
New Orleans	1961																													-
	1960																													-
New York	1961					3L	2L				4L				3L	3L	5M	9	4N	0q		1L	5L	1			0	0L	40	
	1960					4L	5L			7L					5L	5L	3M	9	8N			3L	3L	0		4			56	
North Carolina	1961	0																	1						0				1	
	1960	0																	1						2				3	
Northern Alberta	1961																													-
	1960																													-
Northern New Jersey	1961					0	0				0				0	0	0	4	0	2		0	0				7	0		13
	1960					0	0				0				0	0	0	5	0			0	0				2			7
Northwest Florida	1961																								2				2	
	1960																								3				3	
Oklahoma City	1961										2										4								6	
	1960									4											4								8	
Omaha-Lincoln	1961		6		2p	1	0q						0p	2		0r	4	1	3	4q		2r			2				27	
	1960		2		1		2q							0			1	3	2	0q		1							12	
Orlando	1961										1																		6	
	1960																												0	
Ottawa	1961																								1				1	
	1960																													-
Philadelphia	1961	3	2	4	5		2	6		0	0	3			2	1	6	4	2	2		4	2	4	2		1	3	58	
	1960	1	3	2	1		3	5			4	3			0	2	5	2	4	3		4	4	2	7		3		58	
Phoenix	1961																0								0				0	
	1960																0								0				0	
Pittsburgh	1961		1			0											6							2					9	
	1960		1			0											3												4	
Portland	1961																												5	
	1960																												6	
Princeton	1961																												0	
	1960																												0	
Quebec	1961				0																								0	
	1960				0																								0	

Section F. Table 2 - Professional Group Chapter Meetings, by Section, by Group - 1960, 1961*

Section		1	2	3	4	5	6	7	8	9	10	11	12	13	14	15	16	17	18	19	20	21	22	23	24	25	26	27	28	Totals	
Regina	1961																													-	
	1960																														-
Rio de Janeiro	1961																														-
	1960																														-
Rochester	1961																		0						2					2	
	1960																								2					2	
Rome-Utica	1961														5					6					1		0		12		
	1960														1					5					0		2		8		
Sacramento	1961																													-	
	1960																													-	
St. Louis	1961									0																				0	
	1960								0		0																			0	
Salt Lake City	1961																													-	
	1960																													-	
San Antonio-Austin	1961	0			0																									0	
	1960	0			0																									0	
San Diego	1961	2		4							3							4	0						1				14		
	1960	0		1							1							1	0						1				4		
San Francisco	1961	8	2	9	4		4		6	8			5		5	9	9	5	6	3			4		4		5	6	102		
	1960	6	1	8	0		8		5	9					5	11	8	7	7	5			9		8		6	1	104		
Schenectady	1961													1		0		1							3				5		
	1960													0		0		0							0				0		
Seattle	1961			0s	0										3			2s											5		
	1960				0																								0		
Shreveport	1961																													-	
	1960																													-	
South Bend-Mishawaka	1961																													-	
	1960																													-	
South Carolina	1961																													-	
	1960																													-	
Southern Alberta	1961																													-	
	1960																													-	
Syracuse	1961	0		1t	2										2	2	3	0t		2					2				14		
	1960	1		4	2										2	3		4		2				2					20		
Tokyo	1961																	0												0	
	1960																	1												1	
Toledo	1961																													-	
	1960																													-	
Toronto	1961			0u														0u		5									5		
	1960																			2									2		

* Joint with Fort Worth
 † Joint with Phoenix and Tucson
 ‡ Joint with Northern New Jersey
 § Joint with Long Island, Northern New Jersey and Princeton
 ¶ Joint G-1 and G-17 Chapter
 †† Joint G-1 and G-17 Chapter

Section F. Table 2 - Professional Group Chapter Meetings, by Section, by Group - 1960, 1961 *

Section		1	2	3	4	5	6	7	8	9	10	11	12	13	14	15	16	17	18	19	20	21	22	23	24	25	26	27	28	Totals
Tucson	1961																							0					0	
	1960																								0					0
Tulsa	1961																													-
	1960																													-
Twin Cities	1961	0	0				2								0		1		0					0			0		3	
	1960	0	2				1								2		3							0					8	
Vancouver	1961		0																										0	
	1960		1																										1	
Virginia	1961																												-	
	1960																												-	
Washington	1961	2	1	7		0	0	3		4	4		3		0	4	3	7	1	2		2		4		1	1	49		
	1960	3		4		0	3	0		7	2		0		3	5	5	10	1	1		2	0	1		3	3	53		
Western	1961																												-	
Mass.	1960																												-	
Western	1961																												-	
Michigan	1960																												-	
Wichita	1961																												-	
	1960																												-	
Williams- port	1961																												-	
	1960																												-	
Winnipeg	1961																												-	
	1960																												-	
TOTALS		57	38	102	36	32	57	80	5	44	60	43	23	8	69	66	143	159	100	67	0	45	43	67	89	0	47	24	5	1,509

* As reported to IRE Headquarters 12/29/61.

- a - Two separate G-5 Chapters
- b - Joint G-3 and G-17 Chapters
- c - Joint G-3 and G-17 Chapters
- d - Joint G-3 and G-17 Chapters
- e - Joint with Fort Worth
- f - Joint with Fort Worth
- g - Joint with Phoenix and Tucson

- h - Memphis Subsection Chapter
- i - Orange Belt Subsection Joint Chapter
- j - Santa Ana Subsection Joint Chapter
- k - Santa Ana Subsection Chapter
- l - Joint with Long Island and Northern New Jersey
- m - Joint with Northern New Jersey
- n - Joint with Long Island, Northern New Jersey and Princeton

- o - Monmouth Subsection Chapter
- p - Joint G-4 and G-12 Chapter
- q - Joint G-6 and G-19 Chapter
- r - Joint G-15 and G-21 Chapter
- s - Joint G-3 and G-17 Chapter
- t - Joint G-3 and G-17 Chapter
- u - Joint G-3 and G-17 Chapter

Section F - Table 3 - Section and Subsection Publications, 1961

A growing major activity of many Sections and the larger Subsections in recent years is the publication of a local monthly Bulletin to fulfill the need for announcing to the Section members the increasing activities of the Section, including (1) Section Meetings (2) Professional Group Chapter Meetings and (3) information on the local and national level of interest to the Section member.

Fifty-nine of the Sections and Subsections now issuing these monthly publications are listed below:

Section:	Publication:	Section:	Publication:
Akron	"The Bulletin"	New York	"The Monitor"
Albuquerque-Los Alamos	"The Blast"	North Carolina	"Bulletin"
Alamogordo-Holloman	"The Missile"	Northern New Jersey	"IRE Newsletter"
Baltimore	"The Speaker"	Northern Vermont	"The Viren"
Benelux	"The Benelux Bridge"	Subsection (Boston)	"The Courier"
Binghamton	"Pulse"	Northwest Florida	"Sooner Satellite"
Boston	"The Reflector"	Oklahoma City	"IRE Bulletin"
Cedar Rapids	"Meeting Notice"	Ottawa	"Almanack"
Central Florida	"Indian River Engineer"	Philadelphia	"Bulletin"
Central Pennsylvania	"Newsletter"	Pittsburgh	"Portland Pi"
Chicago	"Scanfax"	Portland	"P. S."
Cleveland	"Cleveland Section News"	Princeton	"The Communicator"
Columbus	"IREmitter"	Rochester	"IRE Echoes"
Connecticut	"The CONNector"	Rome-Utica	"The Mighty Mho"
Dallas	"dIREction"	St. Louis	"Salt Lake Crystal"
Dayton	"Wave Guide"	Salt Lake City	"The Analog"
Denver	"The Denver Decibel"	San Antonio-Austin	"IRE Bulletin"
Detroit	"Cross Talk"	San Diego	"The Grid"
Emporium	"Newsletter"	San Francisco	"IRE Bulletin"
Evansville-Owensboro	"The Transmitter"	Schenectady	"Data Link"
Florida West Coast	"Suncoast Signal"	Seattle	"The Nucleus"
Fort Wayne	"The Announcer"	South Bend-Mishawaka	"Southern Corona"
Houston	"The Scope"	South Carolina	"Scanner"
Huntsville	"The Live Wire"	Syracuse	"Denshi Tokyo"
Indianapolis	"Indiana Reporter for Engineers"	Tokyo	"The wIRE"
Kansas City	"The Local Oscillator"	Tucson	"The Radiator"
Long Island	"The Pulse"	Twin Cities	"Sidebands"
Los Angeles	"The Bulletin"	Vancouver	"Virginia Vector"
Miami	"The Mid-month Bulletin"	Virginia	"Bulletin"
Monmouth Subsection (New York)	"Miami tron"	Washington	
	"The Scanner"		

SECTION G

Table 1 - STUDENT BRANCHES AND BRANCH MEMBERSHIP

21 Student Branches were established during 1961. The total number of Student Branches is now 217, operating as follows:

- 54 - IRE Student Branches (IRE)
- 35 - IRE Student Associate Branches (SA) IRE
- 126- IRE-AIEE Student Branches (IRE-AIEE)
- 1 -IRE-AIEE Student Associate Branch (SA) IRE-AIEE
- 1 -IRE-AIEE Student/Student-Associate Branch (S-SA) IRE-AIEE

<u>School</u>	<u>Section Location</u>	<u>Region</u>	<u>Membership**</u>	<u>Branch</u>
Academy of Aeronautics	Long Island	2	70	(SA) IRE
Air Force Institute of Technology	Dayton	4	57	IRE-AIEE
Akron, University of	Akron	4	18	IRE-AIEE
Alabama, University of	Huntsville	3	53	IRE-AIEE
Alaska, University of	Anchorage	7	9	IRE-AIEE
Alberta, University of	Northern Alberta	8	71	IRE-AIEE
Arizona State University	Phoenix	7	59	IRE
Arizona University of	Tucson	7	77	IRE-AIEE
Arkansas, University of	Little Rock	6	57	IRE-AIEE
Arlington State College	Fort Worth	6	106	(SA) IRE
Auburn University	Atlanta	3	127	IRE
Bradley University	Chicago	5	27	IRE-AIEE
Bridgeport, University of	Connecticut	1	35	IRE-AIEE
Brigham Young Univ.	Salt Lake City	7	52	IRE
British Columbia, University of	Vancouver	8	87	IRE-AIEE
Bronx Community College	New York	2	20	(SA) IRE
Brooklyn, Polytechnic Institute (Day Div.)	New York	2)	236	IRE-AIEE
Brooklyn, Polytechnic Institute (Eve. Div.)	New York	2)		IRE-AIEE
Broome Technical Community College	Binghamton	1	47	(SA) IRE
Brown University	Boston	1	16	IRE-AIEE
Bucknell University	Williamsport	4	14	IRE-AIEE
Buenos Aires, University of	Buenos Aires	-	68	IRE
California Institute of Technology	Los Angeles	7	53	IRE-AIEE
California State Polytechnic College (San Luis Obispo)	Los Angeles	7	131	IRE
California State Polytechnic College (Kellogg-Voorhis Campus)	Los Angeles	7	145	IRE
California, University of (Berkeley)	San Francisco	7	248	IRE-AIEE
Capito Radio Engineering Institute	Washington	3	135	(SA) IRE
Carnegie Institute of Technology	Pittsburgh	4	77	IRE-AIEE
Case Institute of Technology	Cleveland	4	79	IRE-AIEE
Catholic University of America	Washington	3	15	IRE-AIEE
Central Technical Institute	Kansas City	6	126	(SA) IRE

<u>School</u>	<u>Section Location</u>	<u>Region</u>	<u>Membership**</u>	<u>Branch</u>
* Christian Brothers College	Huntsville	3	37	IRE
Cincinnati, Univ. of	Cincinnati	4	52	IRE-AIEE
Clarkson College of Technology	Syracuse	1	35	IRE-AIEE
Clemson College	South Carolina	3	31	IRE-AIEE
Colorado State Univ.	Denver	6	48	IRE-AIEE
Colorado, Univ. of	Denver	6	75	IRE-AIEE
Columbia University	New York	2	66	IRE-AIEE
Connecticut, Univ. of	Connecticut	1	50	IRE-AIEE
The Cooper Union	New York	2	35	IRE-AIEE
Cornell University	Ithaca	1	91	IRE-AIEE
Dayton, Univ. of	Dayton	4	88	IRE-AIEE
* Dayton, University of Technical Institute	Dayton	4	3	(SA) IRE
Delaware, Univ. of	Philadelphia	3	24	IRE-AIEE
Denver, University of	Denver	6	19	IRE-AIEE
Detroit, University of	Detroit	4	11	IRE-AIEE
DeVry Technical Institute (Illinois)	Chicago	5	316	(SA) IRE
* DeVry Technical Institute of Canada	Toronto	8	65	(SA) IRE
Drexel Institute of Technology	Philadelphia	3	117	IRE-AIEE
Duke University	North Carolina	3	10	IRE-AIEE
* Ecole Polytechnique	Montreal	8	29	IRE
* Electronic Technical Institute	San Diego	7	20	(SA) IRE
Fairleigh Dickinson University	Northern New Jersey	2	72	IRE
Fenn College	Cleveland	4	30	IRE
Florida, University of	Gainesville	3	98	IRE-AIEE
*Franklin Institute of Boston	Boston	1	30	(SA) IRE
George Washington University	Washington	3	70	IRE-AIEE
Georgia Institute of Technology	Atlanta	3	128	IRE
*Heald Engineering College	San Francisco	7	53	(SA) IRE
Hofstra College	Long Island	2	56	IRE
** Houston, University of (College of Engineering)	Houston	6	22	IRE-AIEE
Houston, University of (College of Technology)	Houston	6	26	(SA) IRE
Howard University	Washington	3	30	IRE-AIEE
Idaho, University of	Seattle	7	27	IRE-AIEE
Illinois Institute of Technology	Chicago	5	85	IRE
Illinois, University of Urbana	Chicago	5	151	IRE-AIEE
*Illinois, University of Navy Pier, Chicago	Chicago	5	24	(SA) IRE
Iowa, State Univ. of	Cedar Rapids	5	45	IRE
Iowa, State Univ. of Science & Technology	Cedar Rapids	5	101	(S - SA) IRE-AIEE
John Carroll Univ.	Cleveland	4	43	IRE
The Johns Hopkins University	Baltimore	3	75	IRE-AIEE
Kansas State University of Agriculture & Applied Science	Kansas City	6	49	IRE

<u>School</u>	<u>Section Location</u>	<u>Region</u>	<u>Membership**</u>	<u>Branch</u>
Kansas, University of	Kansas City	6	39	IRE-AIEE
Kentucky, University of	Louisville	5	50	IRE
Lafayette College	Philadelphia	3	49	IRE-AIEE
** Lamar State College of Technology	Beaumont-Port Arthur	6	54	IRE-AIEE
La Salle College	Philadelphia	3	38	IRE
Laval University	Montreal	8	71	IRE-AIEE
Lehigh University	Philadelphia	3	77	IRE-AIEE
* Long Beach State College	Los Angeles	7	48	IRE
Los Angeles State College of Applied Art & Sciences	Los Angeles	7	41	IRE
Louisiana Polytechnic Institute	Shreveport	6	20	IRE-AIEE
Louisiana State University	New Orleans	6	41	IRE-AIEE
Louisville, Univ. of	Louisville	5	27	IRE-AIEE
Lowell Technological Institute	Boston	1	56	IRE
Loyola University	Los Angeles	7	35	IRE
Maine, University of	Boston	1	30	IRE
Manhattan College	New York	2	57	IRE-AIEE
Manitoba, University of	Winnipeg	8	32	IRE
Marquette University	Milwaukee	5	65	IRE-AIEE
Maryland, Univ. of	Washington	3	166	IRE-AIEE
Massachusetts Institute of Technology	Boston	1	373	IRE-AIEE
Massachusetts, Univ. of	Western Massachusetts	1	61	IRE-AIEE
Merrimack College	Boston	1	22	IRE-AIEE
Miami, University of	Miami	3	70	IRE
Michigan College of Mining & Technology	Milwaukee	5	43	IRE-AIEE
Michigan State Univ.	Detroit	4	92	IRE-AIEE
Michigan, University of	Detroit	4	122	IRE-AIEE
Milwaukee School of Engineering	Milwaukee	5	104	IRE
Minnesota, University of	Twin Cities	5	75	IRE-AIEE
Mississippi State Univ.	Huntsville	3	110	IRE
Missouri School of Mines & Metallurgy	St. Louis	6	137	IRE-AIEE
Missouri, University of	St. Louis	6	45	IRE-AIEE
Mohawk Valley Technical Institute	Rome-Utica	1	42	(SA) IRE
Montana State College	Seattle	7	30	IRE-AIEE
Nebraska University of	Omaha-Lincoln	5	61	IRE-AIEE
Nevada, University of	Sacramento	7	18	IRE-AIEE
Newark College of Engineering	Northern New Jersey	2	105	IRE
New Bedford Institute of Technology	Boston	1	16	(SA) IRE-AIEE
New Hampshire, Univ. of	Boston	1	40	IRE-AIEE
New Mexico State Univ.	El Paso	6	39	IRE-AIEE
New Mexico, Univ. of	Albuquerque-Los Alamos	7	89	IRE-AIEE
* New York City Com- munity College	New York	2	34	(SA) IRE
New York, City College of	New York	2	195	IRE
* New York Institute of Technology	New York	2	30	(SA) IRE
New York University (Day Division)	New York	2)		IRE
New York University (Eve. Division)	New York) 2)	127	IRE-AIEE

<u>School</u>	<u>Section Location</u>	<u>Region</u>	<u>Membership**</u>	<u>Branch</u>
New York State University of, at Alfred	Elmira-Corning	1	115	(SA) IRE
North Carolina State College	North Carolina	3	63	IRE-AIEE
North Dakota State College	Twin Cities	5	54	IRE-AIEE
North Dakota, Univ. of	Twin Cities	5	21	IRE-AIEE
Northeastern University	Boston	1	280	IRE-AIEE
Northrop Institute of Technology	Los Angeles	7	107	IRE
Northwestern University	Chicago	5	44	IRE-AIEE
Norwich University	Boston	1	23	IRE-AIEE
Notre Dame, Univ. of	South Bend-Mishawaka	5	23	IRE-AIEE
Ohio Northern University	Toledo	4	13	IRE-AIEE
Ohio State University	Columbus	4	121	IRE-AIEE
Ohio University	Columbus	4	37	IRE-AIEE
Oklahoma State Univ.	Tulsa	6	71	IRE-AIEE
Oklahoma, University of	Oklahoma City	6	69	IRE-AIEE
Oklahoma City University	Oklahoma City	6	21	(SA) IRE
Omaha, Municipal University of	Omaha-Lincoln	5	16	(SA) IRE
Oregon State College	Portland	7	103	IRE
Oregon Technical Institute	Portland	7	32	(SA) IRE
Ottawa, University of	Ottawa	8	32	IRE
Pennsylvania, Univ. of	Philadelphia	3	104	IRE-AIEE
Pennsylvania State Univ.	Central Pennsylvania	4	170	IRE-AIEE
* Pierce College	Los Angeles	7	27	(SA) IRE
Pittsburgh, Univ. of	Pittsburgh	4	95	IRE
Port Arthur College	Beaumont-Port Arthur	6	28	(SA) IRE
Pratt Institute	New York	2	24	IRE-AIEE
Princeton University	Princeton	2	50	IRE-AIEE
Puerto Rico, Univ. of	- - - - -	-	12	IRE
Purdue University	Indianapolis	5	178	IRE-AIEE
* Radio Engineering Institute	Omaha-Lincoln	5	48	(SA) IRE
Rensselaer Polytechnic Institute	Schenectady	1	140	IRE-AIEE
Rhode Island, Univ. of	Boston	1	12	IRE-AIEE
Rice University	Houston	6	42	IRE-AIEE
Rochester Institute of Technology	Rochester	1	72	(SA) IRE
* Rochester, The Univ. of	Rochester	1	30	IRE
* Rome, University of	Italy	-	59	IRE
Rose Polytechnic Institute	Indianapolis	5	17	IRE-AIEE
Royal Military College of Canada	Bay of Quinte	8	26	IRE
Rutgers University	Princeton-Section	2	45	IRE-AIEE
Ryerson Institute of Technology	Toronto	8	58	(SA) IRE
St. Joseph's College	Philadelphia	3	37	IRE
St. Louis University	St. Louis	6	14	IRE
San Diego State College	San Diego	7	21	IRE
* San Francisco State College	San Francisco	7	11	IRE
San Jose State College	San Francisco	7	59	IRE-AIEE
Santa Clara, Univ. of	San Francisco	7	59	IRE-AIEE
Saskatchewan, Univ. of	Regina	8	59	IRE
** Seattle University	Seattle	7	22	IRE-AIEE
* Sinclair College	Dayton	4	7	(SA) IRE
South Carolina, University of	South Carolina Section	3	38	IRE-AIEE

<u>School</u>	<u>Section Location</u>	<u>Region</u>	<u>Membership**</u>	<u>Branch</u>
South Dakota School of Mines & Technology	Twin Cities	5	35	IRE
South Dakota State College of Agriculture & Mechanic Arts	Twin Cities	5	16	IRE-AIEE
The Southern Alberta Institute of Technology	Southern Alberta	8	130	(SA) IRE
Southern California University of Southern Methodist Univ. Dallas	Los Angeles	7	64	IRE-AIEE
Southern Technical Inst. Atlanta		6	53	IRE-AIEE
* Southwest Missouri State University	Kansas City	3	22	(SA) IRE
Southwestern Louisiana, University of	New Orleans	6	2	(SA) IRE
Stanford University	San Francisco	6	29	IRE
Steven Institute of Technology	San Francisco	7	132	IRE-AIEE
Swarthmore College	Northern New Jersey	2	34	IRE-AIEE
Syracuse University	Philadelphia	3	5	IRE-AIEE
Tennessee Agricultural & Industrial State Univ.	Syracuse	1	54	IRE-AIEE
Tennessee, Univ. of	Huntsville	3	13	IRE
Texas College of Arts & Industries	Atlanta	3	27	IRE-AIEE
Texas, Agricultural & Mechanical of	San Antonio-Austin	6	19	IRE
Texas Technological College	Houston	6	86	IRE-AIEE
Texas, University of	Lubbock	6	38	IRE-AIEE
Toledo, Univ. of	San Antonio-Austin	6	158	IRE-AIEE
Toronto, University of	Toledo	4	20	IRE-AIEE
Tri-State College	Toronto	8	58	IRE
Tufts University	Fort Wayne	5	71	(SA) IRE
Tulane University	Boston	1	24	IRE-AIEE
Union College	New Orleans	6	22	IRE-AIEE
* Universidad Tecnica Federico Santa Maria	Schenectady	1	15	IRE-AIEE
U. S. Naval Postgraduate School	Chile	-	16	IRE
Utah State University	San Francisco	7	70	IRE
Utah, University of	Salt Lake City	7	45	IRE
Valparaiso Technical Institute	Salt Lake City	7	113	IRE-AIEE
Valparaiso University	Chicago	5	212	(SA) IRE
Vanderbilt University	Chicago	5	38	IRE
Vermont, University of	Huntsville	3	28	IRE-AIEE
Villanova University	Boston	1	15	IRE-AIEE
Virginia Polytechnic Institute	Philadelphia	3	70	IRE-AIEE
Virginia, University of	Virginia	3	81	IRE-AIEE
* Voorhees Technical Institute	Virginia	3	43	IRE-AIEE
Washington, Univ. of	New York	2	33	(SA) IRE
Washington State Univ.	Seattle	7	145	IRE-AIEE
Washington University	Seattle	7	35	IRE-AIEE
Wayne State University	St. Louis	6	44	IRE-AIEE
Wentworth Institute	Detroit	4	99	IRE-AIEE
* Western Michigan Univ.	Detroit	1	67	(SA) IRE
Western Ontario, University of	Boston	4	32	IRE
West Virginia Institute of Technology	Western Michigan	4	32	IRE
West Virginia Univ.	London	8	22	IRE
	Pittsburgh	4	20	(SA) IRE
	Pittsburgh	4	20	IRE-AIEE

SECTION IV

<u>School</u>	<u>Section Location</u>	<u>Region</u>	<u>Membership**</u>	<u>Branch</u>
Wichita, University of	Wichita	6	17	IRE-AIEE
Wisconsin, Univ. of	Milwaukee	5	160	IRE-AIEE
Worcester Polytechnic Institute	Boston	1	51	IRE-AIEE
Wyoming, Univ. of	Denver	6	42	IRE-AIEE
Yale University	Connecticut	1	36	IRE-AIEE
Youngstown University	Akron	4	34	IRE-AIEE

* Established in 1961.

** Status changes from IRE to IRE-AIEE Student Branch in 1961.

Total Income \$3,938,269

EXPENSE

Proceedings Editorial Pages	\$ 481,353
Advertising Pages	834,897
Directory	363,161
Section Rebates	97,563
Student Program	142,573
Professional Groups	330,212
Sales Items	88,561
General Operations	736,796
Convention	579,359
Publications	17,300

Total Expense \$3,871,975

Reserve for Future Operations-Gross	\$ 64,294
Depreciation	34,041
Reserve for Future Operations-Net	\$ 30,253

SECTION H

Table 1 - 1961 Summary of Income and Expense

INCOME

Advertising	\$ 1,600,766	
Member Dues and Convention	1,863,812	
Subscriptions	238,407	
Sales Items, Binders, Emblems, etc.	176,147	
Investments	55,100	\$1,060,167
Miscellaneous	2,037	
	<hr/>	
Total Income		\$3,936,269

EXPENSE

Proceedings Editorial Pages	\$ 681,353	
Advertising Pages	834,897	
Directory	363,161	
Section Rebates	97,563	
Student Program	142,573	
Professional Groups	330,212	
Sales Items	88,561	
General Operations	736,796	\$ 226,050
Convention	579,359	
Publications	17,500	
	<hr/>	
Total Expense		\$3,871,975

Reserve for Future Operations-Gross	\$ 64,294
Depreciation	34,041
Reserve for Future Operations-Net	<hr/> \$ 30,253

Reserve for Publications	165,000	
Reserve for Depreciation	135,355	
	<hr/>	
Total Reserve		300,355

Surplus Donated	595,287	
Surplus	2,119,763	
	<hr/>	
Total Surplus		2,715,050

Total Liabilities and Surplus		\$4,992,954
-------------------------------	--	-------------

SECTION HTable 2 - Balance Sheet, December 31, 1961ASSETS

Cash and Accounts Receivable	\$1,022,872	
Inventory	<u>37,295</u>	
Total Current Assets		\$1,060,167
Investments at Cost	1,853,498	
Buildings and Land at Cost	1,601,473	
Furniture and Fixtures at Cost	377,273	
Other Assets	<u>100,543</u>	
Total		3,932,787
Total Assets		<u>4,992,954</u>
<u>LIABILITIES AND SURPLUS</u>		
Accounts Payable	\$ 226,050	
Total Current Liabilities		\$ 226,050
Deferred Income	1,499,207	
Professional Groups Funds and Deposit	<u>252,292</u>	
Total Liabilities		<u>1,751,499</u>
Total Liabilities		\$1,977,549
Reserve for Publications	165,000	
Reserve for Depreciation	<u>135,355</u>	
Total Reserve		300,355
Surplus Donated	595,287	
Surplus	<u>2,119,763</u>	
Total Surplus		<u>2,715,050</u>
Total Liabilities and Surplus		\$4,992,954