

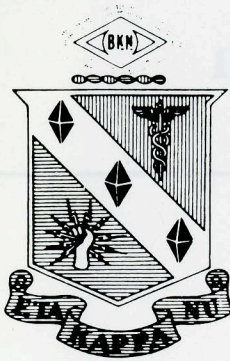


BRIDGE of Eta Kappa Nu

**FIVE COLLEGE
CHAPTERS
WIN AWARDS
FOR OUTSTANDING
ACTIVITIES
IN 1996-97**

and

**1997
OYEE WINNERS
ARE
CHOSEN**

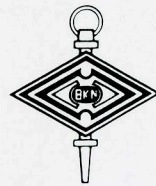


Editor and Business Manager
J. Robert Betten

May 1998
Vol 94 - No. 3

Contributing Editors

Ralph J. Preiss
Alan Lefkow



The BRIDGE is published by Eta Kappa Nu Association, an electrical engineering honor society. Eta Kappa Nu was founded at the University of Illinois, Urbana, October 28, 1904, that those in the profession of electrical engineering, who, by their attainments in college or in practice, have manifested a deep interest and marked ability in their chosen life work, may be brought into closer union so as to foster a spirit of liberal culture in the engineering colleges and to mark in an outstanding manner those who, as students in electrical engineering, have conferred honor on their Alma Maters by distinguished scholarship activities, leadership and exemplary character and to help these students progress by association with alumni who have attained prominence.

The BRIDGE is published four times annually—November, February, May, August and is published by Eta Kappa Nu, Haywood Printing Company, 5th & Ferry Sts., Lafayette, Indiana. Second class postage paid at Lafayette, Indiana. Eta Kappa Nu Association, Subscription price: three years, \$15. Life Subscription, \$60.

Address editorial and subscription correspondence and changes of address to:

HKN BRIDGE, P.O. Box 2107
Rolla, MO 65402

Postmaster: Send address changes to: HKN Bridge, P.O. Box 2107, Rolla, MO 65402.

INTERNATIONAL EXECUTIVE COUNCIL

President: John D. Wolf
Vice President: Richard J. Gowen
Executive Secretary: J. Robert Betten

INTERNATIONAL BOARD OF DIRECTORS

Bruce DeMaeyer
Ronald Hoelzeman
James L. Melsa
Ronald A. Spanke

AWARD COMMITTEES

OUTSTANDING EE STUDENT AWARD COMMITTEE

(Zerby-Koerner Award)
Chairman:

Mr. Marcus D. Dodson, P.E.
Consulting Engineer
9302 Grindlay Street
Cypress, CA 90630

OUTSTANDING EE JUNIOR AWARD COMMITTEE

(Norman R. Carson Award)
Chairperson:

Ms. Laureen H. Parker
13030 Silver Creek Drive
Austin, TX 78727

OUTSTANDING YOUNG EE AWARD COMMITTEE

Chairman:

Dr. Robert A. Bartolini
14 Darvel Drive, Route 4
Robinsville, NJ 08691

OUTSTANDING TEACHING AWARD COMMITTEE

(C. Holmes MacDonald Award)
Chairman:

Mr. Robert F. Arehart
720 Emerson Street
Philadelphia, PA 19111

OUTSTANDING CHAPTER ACTIVITIES AWARD COMMITTEE

Chairman:

Mr. Alan Lefkow
17 Jacobs Road
Thiells, NY 10984

KARAPETOFF EMINENT MEMBERS' AWARD COMMITTEE

Chairman:
Mr. Donald Christiansen
434 West Main Street
Huntington, NY 11743

Contents

Announcements

3 Paul K. Hudson HKN Development Fund: Annual Giving Campaign.

Nominations

11 Vladimir Karapetoff Eminent Members' Award

Awards

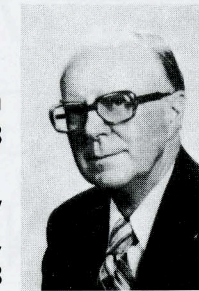
4 1997 OYEE Award Winners

10 Ira Soller Recieves SUNY Chancellor's Award

12 Outstanding Chapter Awards go to Beta, Beta Epsilon, Alpha, Delta Omega, and Kappa Epsilon

PAUL K. HUDSON HKN DEVELOPMENT FUND ANNUAL CAMPAIGN

Paul K. Hudson
1916-1988



Eta Kappa Nu Executive Secretary and BRIDGE Editor, 1958-1988

Established by the Board of Directors in April 1992, this important fund will honor the memory of Paul Hudson, a devoted servant of HKN and a man who truly exemplified the qualities that "balance the bridge."

The Hudson fund, managed by the HKN Board of Directors, will be used to support the general development of Eta Kappa Nu. For example, the fund will be used where necessary to help support HKN's national award programs; expansion, including the development of new college chapters and alumni chapters; and chapter visitations by current and past national officers and directors to assist with special occasions. All of these examples represent activities which Paul so heartily endorsed. Other developmental projects will be considered by the Board as funding grows and new objectives important to HKN become established.

As we honor Paul, we also honor donors to the fund by recognizing them as Paul K. Hudson Fellows. Five levels of giving are recognized, as in the form below. One-time donations at any level will be gratefully accepted. In addition, donors may now make pledges for annual donations. All donations will be counted cumulatively for the purpose of establishing the donor's current level of giving. Fellows at each level will be recognized annually by name in the BRIDGE.

Eta Kappa Nu thanks those who have already become Paul K. Hudson Fellows. We invite all members and friends of HKN to join the growing list of Fellows. And whether or not you are presently a Fellow, consider extending your support of the Hudson Fund on an annual basis. Simply fill out and return the form below. Thank you for your part in supporting and strengthening Eta Kappa Nu.

_____ I wish to become a Paul K. Hudson Fellow at the level of (check one)

_____ Distinguished Fellow (\$2000 and above)

_____ Century Fellow (\$1000 - \$1999)

_____ Sustaining Fellow (\$500 - \$999)

_____ Supporting Fellow (\$100 - \$499)

_____ Fellow (\$25 - \$99)

with the enclosed contribution of \$_____.

_____ I wish to pledge a total of \$_____ to the Hudson Fund, at \$_____ per year for _____ years, beginning _____.

NAME _____

ADDRESS _____

CITY, STATE, ZIP CODE _____

Return to: Eta Kappa Nu International Headquarters
Box HKN

University of Missouri-Rolla
Rolla, Missouri 65401

Become a Paul K. Hudson Fellow

Do it Today!

See Details on Page 3.

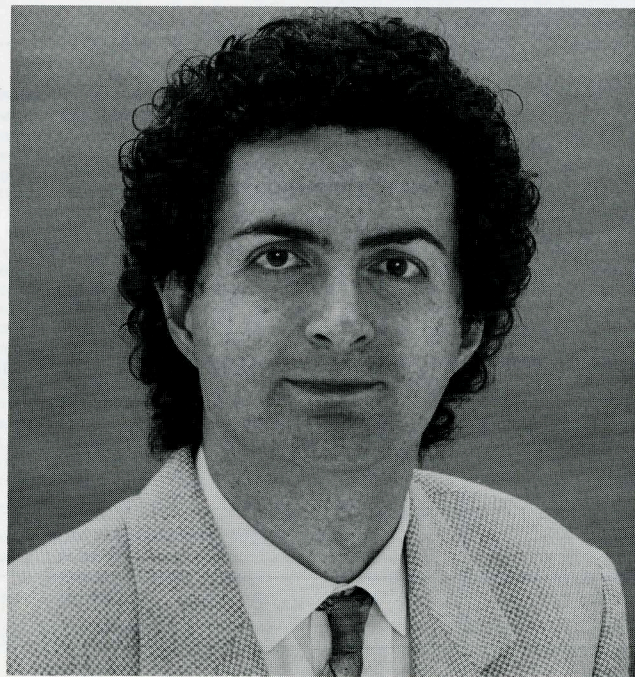
ALSO VIST HKN's WWW HOME PAGE

<http://www.umn.edu/~hknhdqrs>

THE 1997 OUTSTANDING YOUNG ELECTRICAL ENGINEER AWARDS

by **Ralph J. Preiss,**
OYEE Awards Committee

The Eta Kappa Nu Outstanding Young Electrical Engineer Award, presented annually to young (under 35) electrical and computer engineering graduates (within 10 years from their BS degree) for meritorious service in the interest of humankind plus outstanding achievements in their chosen profession, will be awarded for 1997 to Dr. Fabio M. Chiussi, a Distinguished Member of Staff at Lucent Technologies, Bell Laboratories, Holmdel, New Jersey, for his outstanding technical and leadership contributions to the field of telecommunications switching architectures, and for his dedication to the arts and music.



Dr. Fabio M. Chiussi

Additionally, the Eta Kappa Nu Jury of Award named two Honorable Mentions, and the Awards Organization Committee (AOC) added four Finalists to the 1997 list of Outstanding Young Electrical Engineers.

The first Honorable Mention is Dr. Ioannis Kanellakopoulos, an Associate Professor at the Electrical Engineering Department of the University of California in Los Angeles, for his outstanding technical contribution to the field of adaptive control for nonlinear systems, and for his involvement in professional activities.

The second Honorable Mention is Dr. Jenshan Lin, a Member of Technical Staff in Wireless Circuits and Systems Research, Bell Laboratories, Lucent Technologies, Murray Hill, New Jersey, for his significant technical contributions to the field of microwave and millimeter-wave electronics, and for his dedication to community and professional activities.

The four new Finalists are: Jean-Philippe Joseph, AT&T; Kathleen Krisch, Lucent Technologies; Jose Luis Melendez, Texas Instruments; and Anne Palmore Stublen, DuPont. All six honorees will automatically be given consideration in next year's selection process.

The 1997 award recipients will be recognized at Eta Kappa Nu's 62nd annual awards banquet on April 20, 1998 at the Princeton Marriott in Princeton, New Jersey.

Those honored with this prestigious award are selected each year through a well-defined process which has remained virtually unchanged since its inception in 1936. The nomination process involves

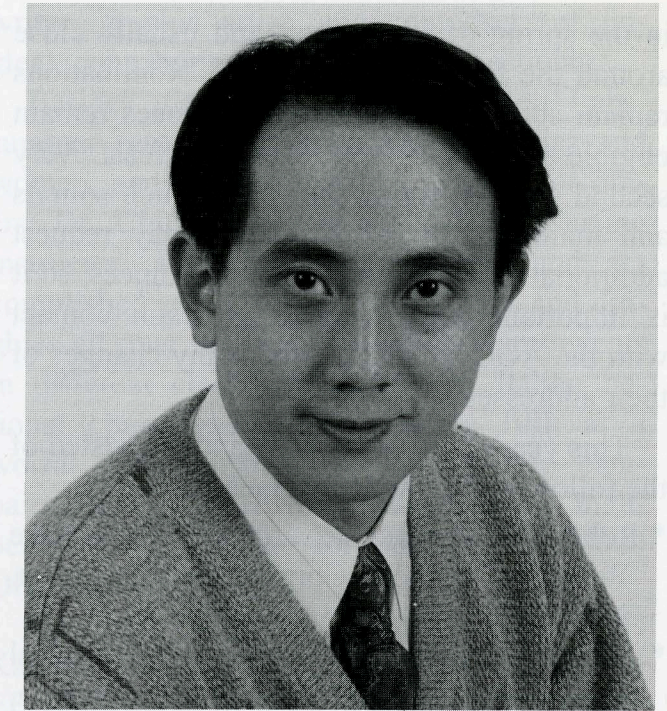


Dr. Ioannis Kanellakopoulos

the initiative of the nominator and the participation of at least three references in support of the candidate. The dossiers of all nominees are carefully screened by the AOC, a standing committee of Eta Kappa Nu which is responsible for soliciting and updating the nominations every year, and which then selects up to a dozen finalists for submission to the Jury of Award.

The award winners are honored for their contributions to electrical, computer, and communications engineering, as well as to society at large. Selection of the OYEE, the Honorable Mentions, and the Finalists is based on individual accomplishments. It is not influenced by news worthiness or the commercial value of a contribution. In the same way, contributions to local neighborhoods and schools, religious organizations and the arts is measured only in personal contributions, and not for news worthiness or sensationalism.

It is Eta Kappa Nu's emphasis on the well-rounded individual that leads it to recognize people who, in addition to striving for excellence in their profession, also give of themselves to the betterment of society, community, and family. Eta Kappa Nu holds that an education based upon the acquisition of technical knowledge and the development of



Dr. Jenshan Lin

analytical and logical thinking is a prerequisite to achievement in many lines of endeavor.

It is interesting to note that this year's three top Outstanding EE's are all foreign-born, and all received their first degrees from a foreign university. Their technical breakthroughs all derived from their thesis work at an American university, and their thesis advisors were all of foreign origin. America has always been a land of immigrants who have gone on to make great contributions to our nation and the world.

This year's award recipients join a long list of individuals who have brought distinction to themselves, their community, and to our profession.

Award winners were brought to the attention of the Jury of Award after the top dozen were selected from a ranking provided by the AOC as a whole. The Jury of Award is constituted once a year from highly respected leaders of the profession for the final selection of the winner and Honorable Mention(s).

Of course, the AOC depends on the persons who had the foresight to nominate the outstanding young electrical engineers in their organizations. Without nominations, the AOC would have no one to recognize. Nominations are solicited by the AOC

in the spring of every year, and usually close around the first week in August. Nominations remain active as long as the nominees remain eligible and update their resumes at least every second year. At times, the AOC which solicits and maintains the nominations, may request additional information from the nominees, so it is important that nominees maintain contact with the AOC by sending them any changes of their addresses.

This year's Jury of Award panel consisted of the following distinguished members:

- * Robert A. Bartolini, Awards Chairman, Vice President, Sarnoff Corporation, Princeton, New Jersey
- * Kenneth R. Laker, Department of Electrical Engineering, University of Pennsylvania, Philadelphia, Pennsylvania
- * Bruce Eisenstein, Electrical and Computer Engineering Department, Drexel University, Philadelphia, Pennsylvania
- * Norman F. Gauss, Director of Engineering, Lockheed Martin Corporation, Princeton, New Jersey
- * Jim Kendrick, Chair, Electrical Engineering Department, United States Naval Academy, Annapolis, Maryland
- * John Wolf, Teledesic Corporation, Kirkland, Washington
- * Robert E. Owen, Vice President of Technology Development, Cooper Power Systems, Franksville, Wisconsin

The members of the 1997 Award Organization Committee were:

- * Mark G. Adamiak, General Electric Co., Protection & Control, Malvern, Pennsylvania
- * Amy Brotherton, On Leave, Columbus, Ohio
- * Robert Bartolini, Sarnoff Corporation, Princeton, New Jersey
- * Donald Christiansen, IEEE (Retired), Huntington, New York
- * Larry Dwon, Consultant (Retired), Columbus, Ohio

- * James A. D'Arcy, Lockheed-Martin, Communications and Power Division, Newtown, Pennsylvania
- * Irving Engelson, IEEE (Retired), Piscataway, New Jersey
- * Quayne G. Gennaro, Design by Hilton, Inc., Vienna, Virginia
- * Willard B. Groth, Consultant, Boca Raton, Florida
- * Michael R. Hajny, Metering Engineering, Inc., Charleston, South Carolina
- * James D. Hebson, Jr., PSE&G, Newark, New Jersey
- * John Henderson, Hitachi America, Princeton, New Jersey
- * Cecelia Jankowski, IEEE, Piscataway, New Jersey
- * Stephen Mauser, Power Technologies, Inc., Schenectady, New York
- * Ralph J. Preiss, IBM Corporation (Retired), Poughkeepsie, New York
- * Berthold Sheffield, RCA (Retired), Belle Mead, New Jersey
- * Joseph J. Strano, New Jersey Institute of Technology, Holmdel, New Jersey
- * Kurt M. Trampel, IBM Corporation, Purchase, New York
- * Won-tien Tsang, Lucent Technologies, Bell Laboratories, Murray Hill, New Jersey

Eta Kappa Nu's 1997 OYEE, Dr. Fabio M. Chiussi, is a Distinguished Member of Technical Staff at Bell Laboratories, Lucent Technologies, Holmdel, New Jersey, in the High-Speed Networks Research Department. Born in Udine, Italy, he received his degree in Electronic Engineering (summa cum laude) from the University of Padua, Italy, in 1986. His subsequent degrees were an MS in EE from Stanford University (1988), a Ph.D. in Computer Science from Padua (November 1991), an MS in Engineering Management from Stanford (December 1991) and a Ph.D. in EE also from Stanford (June 1993). His Ph.D. dissertation, under the supervision of Prof. F. A. Tobagi, has become one of the most influential

works in the area of high-speed packet switching architectures, combining innovative architectural design, rigorous performance analysis and state-of-the art VLSI implementation of the proposed architectures. His work also established a theoretical foundation for the realization of Asynchronous Transfer Mode (ATM) switches which has received widespread recognition in the industry.

After his Ph.D., Dr. Chiussi joined his present employer in the VLSI Research Department where he conducted fundamental research in the area of broadband telecommunications networks and led the architectural design and development of two generations of a family of integrated circuits for ATM switches, called the ATLANTA chip set. This is currently a leading chip set in the ATM switching market and is recognized as one of the most innovative in the industry. It embodies the breakthroughs resulting from Dr. Chiussi's research, including congestion control (available bit rate service), traffic management (packet scheduling and quality-of-service provisioning), and performance characterization of ATM switches. The result of his research is published in more than 45 technical papers, and he holds five issued patents with some 15 more pending. His current research interests include ATM switching, IP switching and routing, traffic management and scheduling, congestion control, and integrated circuit design.

Apart from his technical achievements, Dr. Chiussi has a formal music education, holding a diploma in classical guitar from an Italian conservatory and he is a talented painter who has exhibited in group shows in the U.S. and Europe. Some of his illustrations have been published in trading cards and games. He has given lectures on art history, published art reviews in local magazines and newspapers, and co-founded Vivo D'Arte, a publishing company of fine art prints. Before he became too busy, he freelanced in advertising as a copy-

writer, graphic artist, and composer (of jingles), contributing to several large accounts.

Besides mentoring students in Bell Labs' summer research program for minorities and women, and serving as thesis advisor for others, Dr. Chiussi is a sailing and windsurfing instructor, an expert Alpine skier, and accomplished sailor. He raced keelboats and dinghies all over the world, winning many events in different classes, including an Italian national championship and placing fifth at a world championship. He is currently campaigning a 49er, a two-trapeze high-performance dinghy for the Sidney 2000 Olympics.

Honorable Mention winner, Dr. Ioannis Kanellakopoulos, is Associate Professor at the EE Department of the University of California in Los Angeles. He was born in Athens, Greece in 1964. In 1982 he started his EE studies at the National Technical University of Athens after ranking first in the Greek National Admissions exam, and he received his five-year program diploma in 1987, graduating in the top 1% of his class. He then continued his studies as a Research Assistant in the Coordinated Science Laboratory with a Departmental Fellowship in 1987 and a Grainger Fellowship in 1990 at the University of Illinois, Urbana-Champaign. Under the guidance of Professor Petar Kokotovic, he received his MS and Ph.D. degrees in 1989 and 1992 respectively.

Dr. Kanellakopoulos' primary research interests are in the theory and applications of non-linear and adaptive control to which he has made major contributions by finding radically new solutions far beyond the results of any existing theory. His theoretical discoveries include the award-winning development of a systematic "adaptive backstepping" methodology, which produced the first global stability and performance results for several broad classes of continuous-time uncertain nonlinear systems without imposing any growth restrictions on the nonlinearities. His "active identifi-

cation" procedure discovery is producing analogous global results for discrete-time nonlinear systems.

His application contributions include the first nonlinear spacing policies for longitudinal control of automated commercial heavy vehicles, which yield very good stability and performance in the absence of intervehicle communication and in the presence of significant actuator delays; also the first nonlinear design of active vehicle suspensions which ameliorate the inherent trade-off between passenger comfort and rattlepace utilization by smoothly shifting performance objectives in different operating regions of the suspension.

In the last five years, Dr. Kanellakopoulos has had a significant impact on UCLA undergraduate and graduate education by introducing dynamic modeling and simulation available to students on their home personal computers; it is now used in some 15 courses at UCLA. He personally revamped two undergraduate and two graduate courses with the inclusion of computer assignments for control design and simulation. He and his students included his backstepping technique in the software toolbox which is now available for use by all. Dr. Kanellakopoulos also upgraded all undergraduate and several UCLA graduate control courses.

In addition, in conjunction with a professor from the signal processing area and one from the communications area, he developed a new "Systems Design" undergraduate course in which students learn to design control, communications and signal processing modules, and to integrate them into complete systems. The course emphasizes the tradeoffs and interconnections between subsystems, and teaches the students how to design one subsystem to compensate for the shortcomings and benefits of the other subsystems.

His work so far is described in one book, five chapters in edited volumes, 26 journal pa-

pers, 47 conference papers, and 13 technical reports. Dr. Kanellakopoulos is in high demand as guest speaker world-wide, as technical conference session organizer, and he has graduated two Ph.D. and four MS candidates in his specialty. Not only has he personally won two best student paper awards, but three of his students have already been recognized with Best Student Papers in the IEEE Conference on Decision and Control.

Honorable Mention winner Dr. Jenshan Lin was born in Keelung, Taiwan, and received his BS in Electrophysics from the National Chiao Tung University in Taiwan. After two years of military service as a second lieutenant, he took a civilian job in charge of the national inductance standards at the Center of Measurement Standards, Industrial Technology Research Institute, Hsinchu, Taiwan, from 1989 to 1990. Dr. Lin also completed an automatic inductance calibration system and published his first technical paper in the 1990 IEEE Conference on Precision Electromagnetic Measurement.

Dr. Lin came to the United States in 1990 to continue his studies at the University of California, in Los Angeles, where Professor Tatsuo Itoh served as his research adviser. He advanced his research interest of controlling and predicting the behavior of electromagnetic waves in high frequency circuits through his MS and Ph.D. thesis topics on tunable active bandpass filters, and active integrated antennas. He received his degrees in 1991 and 1994 respectively.

As part of his Ph.D. thesis and post-doctoral research at UCLA, Dr. Lin designed and demonstrated the first two-dimensional injection locking microwave oscillator and active array antenna. This invention utilizes a seeding oscillator to control many coupled oscillators and radiating elements to effectively combine the radiation power together and project it to a desirable location. Dr. Lin was selected as 1994 UCLA outstanding Ph.D. He joined Bell Laboratories in July, 1994 and immediately became

a leader in several research projects for microwave communications involving high frequency circuits for wireless communications applications.

The first circuit Dr. Lin demonstrated in 1995 was a 30 GHz heterojunction bipolar transistor (HBT) voltage-controlled oscillator operated at 1.5 Volts. At this writing, its bias voltage and phase noise are still the lowest made public. He has since extended the work to high frequency circuits using both HBTs and high electron mobility transistors (HEMT). In 1996, he discovered the current crowding effect that degrades an inductor's quality factor (Q). By developing guidelines for designing integrated inductors, he was able to design high-Q inductors very accurately.

Dr. Lin serves on a number of IEEE committees and has authored and co-authored some 50 technical papers, has lectured world-wide on active integrated antennas, and has one U.S. patent granted with six more pending in the areas of diversity antennas, active antenna repeaters, and linear power amplifiers.

Besides his own research, Dr. Lin participates in the Bell Labs Summer Research Program where he mentors minorities and women college students, one of whom placed second in the 1997 IEEE International Microwave Symposium's student paper contest. He also has practiced Tai Chi since age 10, and Chi Kung since college. In fact, he has been selected as a member of the 14th generation of the Dragon Gate Division which emphasizes the harmonic enhancement of both mind and body through the practice of Chi.

We shall continue to describe the accomplishments of the outstanding young electrical engineers of 1997 in another issue of THE BRIDGE. Watch for it later in the year.

To review the nomination process:

Nominations may be made by any member or group of members of Eta Kappa Nu; by

leaders from industry; by any Section or Society of the Institute of Electrical and Electronics Engineers, Inc.; by the heads of electrical and computer engineering departments of any U.S. college or university; or by any other individuals or groups, who, in the opinion of the Awards Organization Committee, are properly qualified to make nominations.

Nomination forms for 1998 may be obtained from the Executive Secretary of Eta Kappa Nu, PO Box 2107 Rolla, MO 65402 and should be returned to him by August 1, 1998 for processing.

- An eligible candidate for OYEE is one who:
- * has an electrical engineering degree (BS, MS, or Ph.D.) from a recognized U.S. engineering school,
 - * will have been graduated not more than 10 years as of May 1, 1998 from a specified baccalaureate program, and
 - * will not have reached his or her 35th birthday as of May 1, 1998.

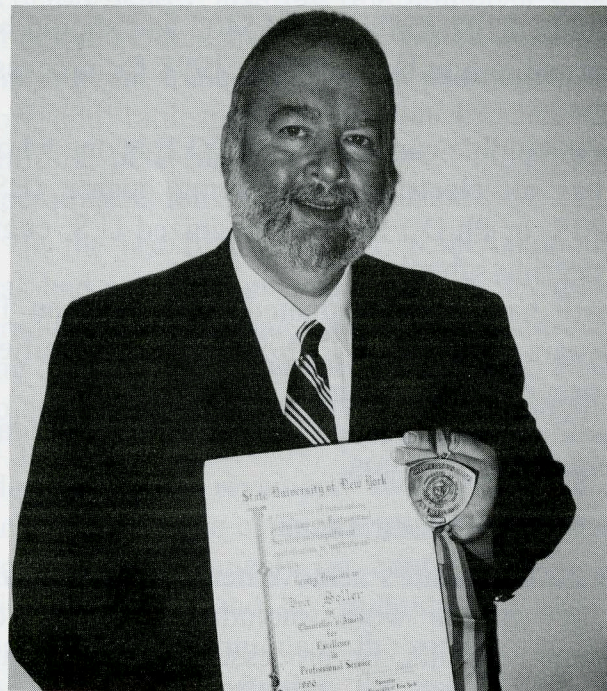
Awards are based upon:

(1) the candidate's achievements of note in his or her chosen work, including invention of devices, circuits, or processes; improvements in analyses; discovery of important facts or relationships; developments of new methods; exceptional results in teaching; outstanding industrial management; or direction of research and development.

(2) the candidate's service to community, state, or nation, such as activity in philanthropic, religious, charitable, or social enterprises; leadership in youth organizations; or engagement in civic or political affairs; and

(3) the candidate's cultural and aesthetic development, such as work done in fine arts, architecture or the performing arts. Studies in history, economics, or politics are also highly valued, as well as any other noteworthy accomplishments, including leadership participation in professional societies and other organizations.

Ira Soller Receives State University of New York Chancellor's Award



Ira Soller

Mr. Ira Soller, MSEE, PE, Director of Biomedical Engineering at the State University of New York, Health Science Center at Brooklyn, and a member of Brooklyn Polytechnic Institute's Eta Kappa Nu Chapter, has been selected recipient of the prestigious State University of New York Chancellor's Award for Excellence in Professional Service for 1996.

The selection criteria requires that the award be given "to individuals who have repeatedly sought improvement of themselves, their campuses and ultimately the State University and, in so doing, have transcended the normal definitions of excellence" and they are "individuals who can serve as professional role models for a University system in pursuit of excellence."

Mr. Soller's engineering career spans more than 30 years. After graduation from CCNY, he worked

at the Bendix Corporation, where he was involved in Space and military work which included the Pershing Missile and the design of the Digital Logic Unit for the Sky-Lab star tracker, as well as automatic test equipment for the F-15s.

Subsequently, at Fairchild Camera he designed the digital portion of the Panoramic Indicator for the TLQ-17A electronic countermeasures set.

For the past 20 years Mr. Soller has worked in biomedical and clinical engineering at SUNY, where he is presently Director of Biomedical Engineering. His department, The Scientific and Medical Instrumentation Center (SMIC), provides a full range of Biomedical/clinical engineering services, including research related activities. While at SUNY Mr. Soller developed the curriculum for, and taught a course on, Medical Monitoring for the SUNY College of Health Related Professions Cardio-vascular Perfusionist program.

Active in many professional societies including AAMI, ACCE, ASHE, IEEE, Mr. Soller serves as Coordinator for the New York Metropolitan Area Clinical Engineering Directors Group, represents University Hospital of Brooklyn on the Engineering Council of the University Healthcare Consortium, and serves on the Curriculum Advisory Committee of the Biomedical Engineering Technology Department of SUNY Farmingdale.

Mr. Soller has contributed to the UHC Operations Improvement Compendium of Cost Savings Project: Clinical Engineering, and has presented at AAMI on "The changing role of biomedical/clinical engineering as a result of healthcare reform & funding cutbacks" and "Biomedical/clinical engineering department restructuring, a practical management guide."

Nominations Invited for the Eighth Vladimir Karapetoff Eminent Members' Award



Dr. Vladimir Karapetoff

Nominations for the eighth Vladimir Karapetoff Eminent Members' Award are now being solicited. Nomination forms and guidelines may be obtained from Donald Christiansen, Eminent Member Committee Chairman, 434 West Main Street, Huntington, N.Y. 11743.

In 1991, the Eta Kappa Nu Board of Directors announced the establishment of an award in honor of Vladimir Karapetoff, an Eminent Member of HKN and Fellow of IEEE, who died in 1948. The first award was given on April 27, 1992.

The award, the Eta Kappa Nu Vladimir Karapetoff Eminent Members' Award, is made annually to an electrical engineering practitioner who has distinguished himself/herself through an invention, a development, or a discovery in the field of electrotechnology. The fund to support the award was initiated through a bequest from Dr. Karapetoff's wife, R. M. Karapetoff Cobb, herself a distinguished chemical engineer.

A monetary honorarium is provided to the recipient (or shared by the recipients) of the award.

Factors that will be weighed by the jury will include the impact and scope of applicability of the invention, development, or discovery; its impact on the public welfare and standard of living and/or global stability; and the effective lifetime of its impact.

Dr. Karapetoff was born in St. Petersburg, Russia, January 8, 1876.

His father was an engineer and his mother a student at a military medical school.

Dr. Karapetoff emigrated to the United States in 1902, and became a naturalized citizen in 1909.

In 1904 he joined the engineering faculty of Cornell University as an assistant professor. In 1908 he was made a full professor and continued in that capacity until he retired from active teaching in 1939.

In an account of Dr. Karapetoff's career, his Cornell University colleagues R. F. Chamberlain, N. A. Hurwitz, and Everett M. Strong, recalled his continuing dedication to Eta Kappa Nu. During World War II he was commissioned a Lt. Commander in the U. S. Navy. But beginning in 1942, Kary, as he was known to his associates, began to lose his sight in both eyes, and despite temporary relief through operations, he ultimately lost his sight and schooled himself in Braille and "talking books."

Even after his blindness he seldom missed the annual Eta Kappa Nu Award dinner in New York City, and would address them in "refreshingly original and lucid expositions" of his technical interests. Fellow HKN members viewed these occasions as sort of a "national Kary reunion." His handicap notwithstanding, his cheerfulness, determination, and ingenuity prevailed.

His colleagues remembered him as an accomplished musician on piano, violincello, and double bass. He toured the country giving recitals

and lectures on Wagner, Liszt, and other major composers, and developed a five-string cello on which violin music could be played. He received an honorary Doctor of Music degree from New York College of Music.

Professor Simpson Linke, writing in the Winter 1984-85 *Engineering Cornell Quarterly*, cited the following excerpt from Karapetoff's *Electrical Laboratory Notes*, published in 1906, as reflective of the flavor of EE studies in that era:

In coming to the laboratory, bring with you a slide rule, an inch rule or tape, a speed counter, a screw driver and a pair of plyers [sic]. This will save you time and trouble of looking for them or borrowing them. Do not forget to have a pocket knife for skimming off wire; a bicycle wrench is also sometimes very handy to have.

Dr. Karapetoff was the author of several standard texts on electrical engineering that were widely used and revised through several editions, as well as other texts on electrical and magnetic currents, electrical testing, and engineering mathematics.

He was a member of AIEE, the Franklin Institute, the AAAS, the American Mathematical Society, the Mathematical Society of America, the American Physical Society, the U. S. Naval Institute, and the U. S. Naval Reserve Officers' Association.

FIVE COLLEGE CHAPTERS WIN AWARDS FOR OUTSTANDING ACTIVITIES IN 1996-97

by Alan Lefkow

All the award programs of Eta Kappa Nu have the common theme of holding service to others as important as scholarship or professional achievement. For college chapters, whose members have already demonstrated their scholarship accomplishments by their original eligibility for Eta Kappa Nu, services to their department, their school, and their community mark an outstanding chapter. For chapters whose program of activities show outstanding service to others, the Outstanding Chapter Activities Award program provides the recognition to those chapters who have excelled in this area.

For the academic year 1996-97, five chapters of Eta Kappa Nu were judged to have programs of activities that stood above the rest. These chapters received one of three awards: the Certificate of Merit award for meritorious programs, the Honorable Mention award for outstanding programs, or the National Winner award for the most outstanding program. Alpha chapter (University of Illinois at Urbana-Champaign), Delta Omega chapter (University of Hawaii at Manoa), and Kappa Epsilon chapter (Binghamton University) received Certificates of Merit for their excellent programs. Beta Epsilon chapter (University of Michigan) received the Honorable Mention award for their outstanding program. Beta chapter (Purdue University) was voted the National Winner for the most outstanding program in 1996-97.

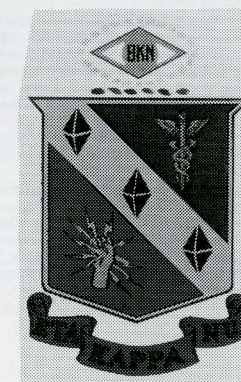
The award plaques are being prepared and will soon be presented to these fine chapters. Certificate winners each receive their certificate laminated in walnut with gold trim. Honorable Mention and the National Winner receive metal plaques engraved in color and mounted on a field of red velvet framed in walnut.

All the awards are noteworthy symbols to mark the chapter's distinction as an outstanding chapter. In the past, selected winning reports of such fine chapters have appeared in various issues of *Bridge* to serve as encouraging examples. For certain, their activities cover a wide range. Popular activities include helping the poor of their community, service to local high schools, support to many events at their own school, providing scholarships and awards to outstanding students, tutoring programs, Resume books for graduating seniors, providing food at their student lounge, services to alumni (newsletters, record keeping), evaluating courses and providing course guides, key supporters for Engineering Day, and promoting interaction between students and faculty. These are but a few of the activities that winning chapters perform for their school, department, or community.

Outstanding chapters are selected, based on their annual chapter report. Any chapter that sends in an annual report is automatically entered into the competition. Reports arrive at National after the end of the academic year and into early fall. They are judged in the winter, and the winners are announced by spring.

Winning chapters submit reports of distinction that do justice to their programs of activities, as previous reports published in *Bridge* have shown. Desktop publishing and other professional methods on campus have contributed to reports that look as good as the chapters they portray. Such reports require hard work, as do outstanding programs of activity. Beta Chapter's winning report is presented here as an encouraging example. Future issues of the Bridge will feature the winning reports of the Beta Epsilon, Alpha, Delta Omega and Kappa Epsilon chapters.

Annual Report



*Eta Kappa Nu
Beta Chapter
Purdue University
1995-1996 Academic Year*

Table of Contents

A Brief History of Eta Kappa Nu and Beta Chapter	1
An Overview of Beta Chapter	3
"The Nice Guys" of Beta Chapter	3
Active Membership	4
Committees	4
Officers & Executive Committee	5
Faculty Advisors	7
Facilities	7
A Year in the Life of Beta Chapter	11
Officer Activities	11
Industry Secretary	11
FunStuff Secretary	13
Lounge Secretary	14
Workshop Secretary	16
Pledge Trainer	16
Recording Secretary	18
Treasurer	19
Vice President	20
President	21
Committee Activities	22
Alumni Committee	22
Awards and Scholarship Committee	22
Community Service Committee	23
Homework Committee	24
Lab Committee	24
Laser Printer Committee	24
Resume Book Committee	25
Professors on POD Committee	25
World-Wide Web Committee	26
Looking Forward	29
Appendix A: The Beta Chapter Scholarship Endowment	31
Appendix B: The 1995 Fall Banquet	35
Appendix C: The 1996 Spring Banquet	39
Appendix D: The Lounge	43
Appendix E: The Alumni Newsletter	49



ETA KAPPA NU
BETA CHAPTER



A Letter from the Presidents

September 28, 1996

One of the many responsibilities of the President's office is to collate the activities of the past year in to the chapter's Annual Report. This report provides the means to share the past year's experiences, good and bad, with the future members of our organization. Because of the diverse activities sponsored by Beta Chapter, there has never been a shortage of 'wisdom' to be passed on, and the past year was no different.

There were some serious challenges faced by Beta Chapter this past year. Our ever expanding operations placed a burden on our revenue sources. The first half of the year was run at a loss because of some bookkeeping problems and we were faced with the possibility of permanently closing the EE Student Lounge. However, thanks to the diligent efforts put forth by several of the actives during winter break, we were able to secure our stock and re-open for business for the Spring '96 semester. Although things were slow in the beginning, by the end of the year we had turned the situation around and started making a profit!

The above is just one example of the dedication and perseverance of the active membership of this great organization. Using some of the Funds generated by the EE Student Lounge, we were able to add to the Eta Kappa Nu scholarship fund established during the 94-95 school year. We are also grateful for the advice and guidance provided by our faculty advisors and the administration.

This organization has had a long history of being much more than just an honor society. Our many activities are for the benefit and enjoyment of all the Electrical Engineering students at Purdue University. With continued involvement from our members no doubt Beta Chapter will continue to make EE life at Purdue much more of a fun and learning experience.

Submitted on behalf of the members of Beta Chapter,

Janahan Vivekanandan
Janahan Vivekanandan
President of Beta Chapter, Fall 1995

Jennifer Fleeter
Jennifer Fleeter
President of Beta Chapter, Spring 1996

THE NATIONAL ELECTRICAL ENGINEERING HONOR SOCIETY

A Brief History of Eta Kappa Nu and Beta Chapter



Eta Kappa Nu is the electrical engineering honorary. It is an international organization with chapters at universities all over the world. Although academic achievement plays a role in qualifying for membership, Eta Kappa Nu stresses the balanced individual by challenging members to excel in areas outside of academics. The membership of Beta Chapter, located at Purdue University, works toward maintaining that balance through the many activities we support. Read on, and learn about our chapter of Eta Kappa Nu.

Eta Kappa Nu was founded at the University of Illinois in 1904 by Professor M. L. Carr. This first chapter was known as Alpha Chapter. Eta Kappa Nu has since grown to over two hundred active college chapters and about twelve alumni chapters.

The second chapter, Beta Chapter, was formed in 1906 at Purdue University at a time when Purdue prohibited fraternal organizations. Shortly after we were founded, President Winston E. Stone heard of our existence and demanded that our chapter be withdrawn. The national organization did so, assuring the Beta Chapter members that they would remain in Eta Kappa Nu as members of Eta Chapter, which is the "Chapter at Large". Throughout this period we continued to hold our meetings in secret. In 1913, when Purdue again recognized fraternities, Professor Rowel, of the Case Applied Science School, now known as Case Western Reserve University, encouraged Beta Chapter to be reorganized.

Early on, Beta Chapter sported one of the largest chapter enrollments. As Beta's active list increased, so did its energy and innovation. By the 1960's Beta Chapter had received room in the EE building to use as a lounge. In the 1970's the lounge began to sell snacks which brought in income that helped increase the number and size of our activities. This increase continued through the 1980's. Beta Chapter actives created many versatile and innovative improvements and projects: ranging from internal changes such as the lounge turned mini-mart, to extra-curricular activities, such as Friday socials and professors as lounge staff.

In the 1990's, Beta Chapter continues to build on its past hard work and excellence as we look for more ways, such as our scholarship endowment, to return something to the department, the profession, and the community. As always, with hard work and dedication things keep getting better.

An Overview of Beta Chapter



Beta Chapter's most valuable asset is our active membership. We have always been fortunate to find enthusiastic members who are dedicated to the organization. The Purdue ECE department has also been very helpful by providing facilities for our chapter's use. This section presents an overview of our membership, how our chapter runs from day-to-day, and the facilities we are responsible for.

"The Nice Guys" of Beta Chapter

Back in the early '80s the phrase "The Nice Guys of HKN" was coined by one of our actives. This name caught on and has withstood the test of time, and a decade and a half of new members. Although several things have changed at Beta Chapter, the underlying belief that our primary goal is to serve the school and the community which we call home has never wavered. Beta Chapter is composed of many individuals who contribute towards the successful achievement of our goals.

There are nine committees that are responsible for the activities and programs sponsored by Beta Chapter. These committees are instrumental in enabling us to accomplish our goals. Without the dedication of the actives who participate as committee chairs as well as committee members most of our lofty goals will remain unrealized.

Beta Chapter, like any other organization relies on the leadership qualities of the actives to keep the organization moving forward. However, ours is not a hierarchical structure where orders are relayed from the top down to those in the trenches, rather each of nine elected officers is responsible for a portion of entire pie and is relied upon to perform his/her tasks. Each officer in turn relies on several unnamed helpers to fully accomplish the duties of his/her elected office.

Towards the end of each semester a major portion of the final actives' meeting is dedicated to electing the officers of the following semester. However, it isn't until the following semester that the newly elected officers realize what they have gotten themselves into. Fortunately, they have a vast pool of experience to draw from thanks to the continued involvement of the faculty, past officers and committee chairs. The past and present officers, and the committee heads combine to form an advisory group called the Executive Committee or Exec Comm for short. The Exec Comm provides a forum for exploring issues before they are presented to the membership.

Committees

A number of committees exist to assist in the many semesterly and daily events that require attention. While many committees are a permanent part of the organization, Beta Chapter creates short-lived committees to handle transient issues. Throughout the semester, active members volunteer to serve on the committees. Each committee selects a chairman who is responsible for organizing meetings, updating the President on activities, and most importantly, making sure that everyone who would like to get involved has the opportunity to do so. A brief summary of each committee's activities is provided below. Detailed information on the specific activities of each committee is provided later in this report.

Alumni: Edits and publishes the bi-annual Beta Chapter newsletter. This frequently involves tracking down reluctant officers and forcing them to do something engineers fear above all else: write prose.

Awards and Scholarships: Nominates individuals for national and local awards in electrical engineering, as well as administers and arranges industry, local, and Beta Chapter sponsored awards and scholarships.

Community Service: Organizes and runs volunteer and fund-raising activities and handles recycling.

Homework: Maintains homework solution files for current classes.

Lab: Supports and oversees the operation of the student laboratory.

Laser Printer: Administers the laser printer available to the general public.

Resume Book: Compiles and publishes the electrical engineering student resume book each fall.

Professors on POD: Responsible for coercing faculty members into donating an hour of their time to mind the lounge.

World-Wide Web: Maintains the HKN World-Wide Web homepage.

Officers & Executive Committee

The responsibilities of the officers do not end with the specific duties attached to their position. These individuals often devote extra time to committees during overload periods, large activities, and often volunteer for small odd jobs. Balancing school and the demands of office is one of the first, and sometimes one of the hardest, lessons learned. Patience, a willingness to help, and good listening qualities are keys to surviving the semester and doing a great job.

Beta Chapter Officers, 1995-1996

Office	Fall 1995	Spring 1996
President	Janahan Vivekanandan	Jennifer Fleeter
Vice President	Michelle Cox	Glenn Reinhardt
Treasurer	Dan Mowry	Tim House
Recording Secretary	Lori Nottingham	Mark Wiley

Active Membership

During the 1995-1996 school year, we had almost 100 active members on the attendance roster. Without the dedication and hard work of the actives, there would be little to talk about in our annual report. When Beta Chapter talks about active members, we really do mean *active!* Beta Chapter had sixteen regular actives' meetings during the 1995-1996 school year. Each meeting typically lasted a half-hour, depending on how much business there is to take care of. Active members are required to attend the meetings unless previous commitments cause conflicts.

Though attendance records are kept, an active may be excused for tests, other commitments, or any excuse creative enough to "fool" the recording secretary. Missing two meetings in a row, or a total of three during a semester, results in deactivation. To be reactivated, it is customary to require the offending member to attempt to *entertain* the crowd prior to a restoration vote. It is rarely easy for the member attempting reactivation, because Beta Chapter can be a tough audience! A member is allowed to be reactivated only once.

A typical night of Beta Chapter meetings occurs every other Monday starting with the Exec-Comm meeting at 6:00 pm. New ideas, upcoming events, and chapter business are discussed. Exec-comm can offer valuable insight to the current officers, such as when to start preparing for an event, who to talk to on campus, pitfalls and red tape to watch out for, and reminders not to procrastinate too much.

The Exec-Comm meeting is scheduled to end just before 7:00 and is followed by an industry presentation sponsored by Beta Chapter. These presentations are set up by the Industry Secretary and open to all Purdue electrical and computer engineering students. Free pizza and soft drinks always ensure a large (and captive) audience.

The actives' meeting begins at 8:00 and ends when the business is completed. In this meeting, important issues are brought forth for discussion or a vote. Many issues inspire lengthy and detailed debates, and are subsequently referred to a committee or informal gathering of interested parties. Other issues such as award nominees or new sales or service ideas are brought before the actives for a final decision during the regularly scheduled meeting. The president needs to be on top of the agenda to keep discussions within a reasonable time frame. Once business has been taken care of, the motion to adjourn is made and usually carried before the "all in favor vote" echo has died out, let alone the final swing of the president's gavel.

The first and last actives' meetings of each semester have special formats. The first meeting is used to fill the lounge duty slots, in addition to regular business. No one leaves until all the slots are filled. When it is down to the last few slots, things can get vicious. A slight body movement or eye contact can result in a person volunteering for a slot (or second slot). The last meeting is devoted to officer elections. With nine offices and several people running for each office, it makes for a busy night.

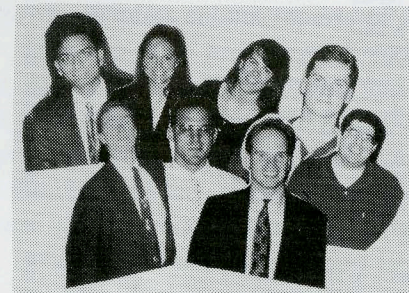
Beta Chapter Officers, 1995-1996

Office	Fall 1995	Spring 1996
Pledge Trainer	Thomas Willis	Ritwik Chatterjee
Workshop Chair	Albert Reuther	Albert Reuther
Lounge Chairs	Paul McGary & Alan Barsicem	Kathy Wagner & Alan Barsicem
Social Chair	Evalyn Henderson	Jill Eck
Industry Chair	Ritwik Chatterjee	Vidya Airo

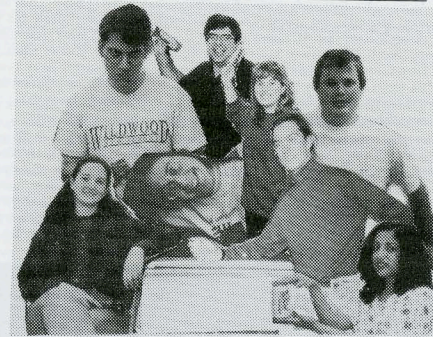
The Executive Committee is an advisory group comprised of past and present committee heads and officers that provides continuity between Beta Chapter administrations. Having access to the experience of past Beta Chapter members is very helpful to new officers and helps to ensure that the transition between administrations is as painless as possible.

Prior to each regular meeting, Exec-Comm meets for an hour to discuss the business of Beta Chapter. The main purpose of this meeting is to attempt to define issues and to find "votable" alternatives that can be presented to the full membership at the actives' meeting. We learned the hard way that an actives' meeting with around seventy-five people is *not* the place to define an issue! Thus, Exec-Comm is often a "fact finding" body that gathers relevant information so the entire membership can make an informed decision on an issue. Such issues can range from the serious, such as deciding to seed an endowment, to the not-quite-so-serious, such as keeping the "presidential throne" in the lounge. Exec-comm meetings are open to any member but only the officers and committee heads are required to attend.

Fall 1995 Beta Chapter Officers.



Spring 1996 Beta Chapter Officers



Faculty Advisors

An indispensable source of leadership and advice comes from Beta Chapter's faculty advisors. Each semester the executive committee meets with the faculty advisors to discuss the current status of the chapter and review future plans. The interaction with the faculty allows our chapter to work in step with our school when planning events, and it also gives us new ideas from a faculty point of view. Their help and support is much appreciated. The 1995-1996 Beta Chapter Faculty Advisors were:

Professor David G. Meyer, head advisor
 Professor Henry G. Dietz
 Professor Anthony A. Maciejewski
 Professor George R. Wodicka
 Professor Michael D. Zoltowski

Facilities

Beta Chapter is fortunate to have extensive support from the School of Electrical Engineering such as the three rooms in the basement of the Electrical Engineering Building we are allowed to use. One of the most popular of these rooms is the site of the EE Student Lounge, often called the HKN Lounge.

years old! The closed circuit monitoring system ensures that in the event someone is injured in the lab their body is removed before the end of the day.

All of our facilities are open to the public. Although the lounge is officially only open on weekdays from 7:30 a.m. to 5:30 p.m., it is often brimming with action in the wee hours of the morning as students study away the night. We are proud of the fact that the our facilities serve not only Beta Chapter, but also are a widely-used gathering place for the entire ECE community.



Andres, it's your turn to restock the coolers!!

The air-conditioned lounge provides a valuable service to students at Purdue. There are comfortable chairs for relaxing and plenty of tables for piling books, notes, and pizzas. Along one wall is a chalk board that sometimes boasts magnificent drawings courtesy of some of the "lounge rats". It also serves to announce meetings, speakers, committee activities, and any other use a chalk-bearing student might think of. Another wall is devoted to the awards Beta Chapter has received for community service and other competitions. We take great pride in these accomplishments.

There is a bulletin board next to the entrance of the lounge for Beta Chapter notices, pictures of officers, volunteer sign-up lists, junk mail of interest to the students, and many other pieces of paper too "important" to throw out. An over-used photocopier is jammed into another corner. Nearby is a mini-library of literature collected from graduate schools, magazines about career opportunities, and "propaganda" from companies that come to campus trying to recruit poor, unwary engineering graduates.

Adjacent to the student lounge is what once was a workshop full of instruments, parts, and other stuff that any aspiring engineer could waste hours of time fiddling with. Today it serves as an informal place to buy reasonably priced soda pop, coffee, junk food, and some not-so-junk food. The latest addition to the lounge is an array of locks for all the cabinets and a not so hidden camera to deter those who insist on using the five finger discount to "purchase" the items that are for sale. However, in an attempt to continue to maintain a neighborly atmosphere, during the day the locks are hidden out of sight and the Person on Duty is encouraged to be more watchful. The alternative to this was to completely shutdown the lounge and we decided to opt for the lesser of the two evils.

In addition to the food, there are also public computer terminals and office supplies for students to finish off that project or last-minute homework. Other amenities such as running water, school newspapers, a campus phone, paper clips, brooms, and helpful, intelligent, soon-to-be engineers are available for public (ab)use or assistance, as the case may be.

A fine sound system is installed in the lounge which sometimes leads to "communication" among the students about the radio station or CD selection. One of our prized possessions, is our laser printer which can be reached from any of the machines in EE. Like the department, we sell printer pages to students at a modest fee to cover the cost of operating the printer. Our printer remains a popular choice with students because we sell pages in any amount, no matter how small the order. Finally, the lounge serves as a meeting place for committees, storage of Beta Chapter records, and Beta Chapter office space.

The third room delegated for our use is the student lab. It has become a popular site to both work on assigned laboratory experiments and to engage in independent research. There are workbenches which house equipment along with bookshelves full of data books, some of which are rumored to be less than four

1. Ok, ok, so it is a hand-me-down from a long-since-graduated member...

A Year in the Life of Beta Chapter



The 1995-1996 academic year was another active one as Beta Chapter members continued to give their time and energy for many projects. We are especially in debt to the committee members whose hard work and personal initiative have made all this possible. To delve into enough detail to do justice to everyone who contributed would require volumes. Therefore, to relieve some of the burden from the former presidents who must compile this report, we limit our discussion to the major events and issues of the past year. In the sections that follow, each office and committee details their achievements during this past year and, in doing so, also describes their functions better than a summary could.

Officer Activities

The nine officers that make up the core of Beta Chapter's Executive Committee are elected at the end of each semester and hold their position during the following semester. The officers, in conjunction with the committee heads, implement the will of the actives. The next portion of this report provides an overview of what each of Beta Chapter's officers accomplished this past year.

Industry Secretary

One of the important functions of our chapter is establishing and maintaining a strong working relationship with industry. This relationship has resulted in an ongoing series of technical presentations, seminars, and resume collection sessions co-sponsored by Beta Chapter and many companies throughout the nation.

Corporate representatives are invited to present seminars on technical subjects of interest to Purdue's undergraduate and graduate student body. These presentations provide an excellent way for students to relate their course work to real world problems and applications, while at the same time allowing companies to make themselves known to the students. Since these presentations coincide with dinner, companies typically supply free pizza to the attendees and Beta Chapter donates the soft drinks.

Industry Presentations During the 1995-1996 Academic Year

Date	Company
September 18, 1995	Delco Electronics
October 2, 1995	Ameritech

Industry Presentations During the 1995-1996 Academic Year

Date	Company
October 16, 1995	AT&T
October 23, 1995	Motorola
November 13, 1995	Intel
February 19, 1996	Intel
March 11, 1996	Motorola
March 25, 1996	Cirus Logic
April 8, 1996	Cisco Systems

Generally, presentations last an hour and are held before each regular actives meeting. The Industry Secretary is responsible for scheduling the industry presentations for the following semester. During the semester, the industry secretary arranges for equipment a speaker may need, orders the pizzas for the meeting, arranges help to move cases of soda to the location of the talk, and greets the visiting speaker. The industry secretary works hard to make sure that the presentations come off without a hitch and that the following semester's schedule is prepared for the next secretary.

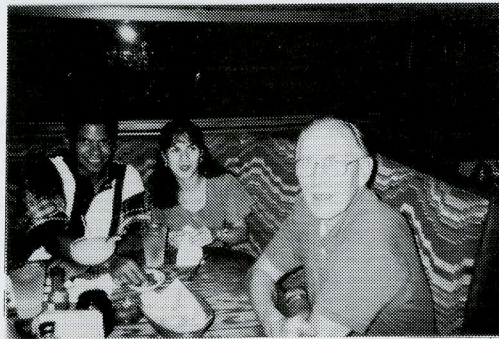


Industry secretary, Vidya Atre, gets ready for a presentation.

FunStuff Secretary

Along with a dedication to service and responsibility, Beta Chapter takes its recreation seriously, and sponsors numerous social events for students and faculty throughout the year. Managing a myriad of social functions is the responsibility of the Social Chairperson, or "FunStuff Secretary" as the post is affectionately known, who makes sure the students have ample opportunities to break away from the rigors of working through Purdue's Electrical Engineering program. In addition to providing much needed outlets to relax, the FunStuff chair works to encourage interaction between the faculty and students outside of the classroom.

Every two to three weeks or so the chapter holds "Thank God It's Friday" parties, commonly known as "TG's", that are open to all Electrical and Computer Engineering students, friends, and faculty. These gatherings usually take place at a local pizza place, or at some trusting faculty member's home and sometimes involve a theme. Beta Chapter traditionally helps foot the bill for the food and encourages support of the current theme. This year, Beta Chapter organized eleven TG's. One of the most entertaining of this year's TG's was our trip to Pepe's, a local Mexican restaurant.



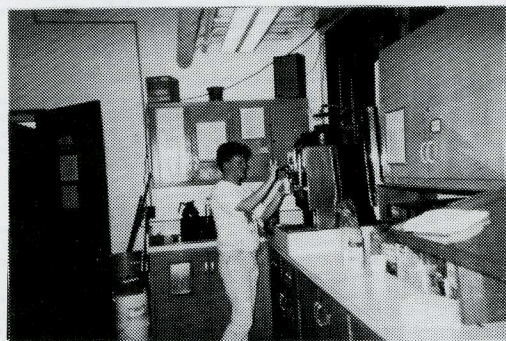
Jose spikes Prof. Koivo's Salsa dip at a TG.

In addition to the eleven TG's this past year, Beta Chapter helps ECE students stay in top physical condition by participating in intramural sports and organizing sports competitions. This year, we had a popular evening of WallyBall, two trips to

the local bowling alley, and teams in both the spring and fall university intramural softball.

We also continued our tradition of sponsoring fall and spring picnics for the ECE students, faculty, staff, friends, and family. In the fall, we co-sponsored a picnic with Purdue's chapter of The Association for Computing Machinery, a computer science professional society. Each year, ACM and Beta Chapter get together for an afternoon of softball, volleyball, socializing and barbecued burgers and hot dogs.

Finally, Beta Chapter closed out both semesters with a get together at a local microbrewery to thank the professors who participated in the "Take-a-Prof-to-Lunch" and "Prof's on POD" programs (see "Professors on POD Committee" on page 25 for more information) and after-the-banquet parties at Mitch Theys' house in the fall and Professor Dietz' house in the spring.



Ken Gardener gets his morning caffeine

Lounge Secretary

Beta Chapter has been generously loaned two rooms in the Electrical Engineering building which comprise the "HKN Lounge". These rooms are the responsibility of Beta Chapter. To manage this resource the executive position of Secretary of the Lounge was created.

To understand the position of the Lounge Secretary, one must understand what the lounge is. In one room, Beta Chapter provides relaxing chairs for tired students while an adjoining room contains cabinets, snacks, and beverages. The lounge is also part of the student communication network. Bulletin boards and chalk boards exist within the lounge for volunteer lists and both Beta Chapter and general notices. In addition, the chalk boards sometimes find themselves filled with the scribble of someone's homework in the making. Over the years, the lounge has developed into a study room as well as a social center.

One of the important functions of the lounge is to provide snack items to Purdue students and staff. Many students are in the habit of visiting the lounge before or after class. A variety of snacks are sold at reasonable prices in the lounge such as soda, bottled juices, chips, granola bars, brownies, Hostess snacks, and of course, coffee and doughnuts.

Popular items in the lounge include doughnuts and bagels that are delivered every morning to cater to the students and faculty who need breakfast on the run. Because the Lounge Secretary selects which items will be sold in the lounge, each semester our product line is a little different. More information on the lounge can be found in the Appendix.

The Lounge Secretary has several responsibilities, the first of which is managing the resources of the lounge. Simply stated, the Lounge Secretary must make sure all of the snacks are available. Two common jobs performed by the lounge secretary include placing orders and picking up "product". Due to the amount of work this position entails, this past year Beta Chapter elected Lounge Co-Secretaries both semesters.

Maintaining order in the lounge requires actives and pledges spend upwards of 100 person-hours per week cleaning, organizing, stocking, and staffing. To sell items in the lounge, Beta Chapter has someone, known as a "Person on Duty" or POD, at the money box each hour the lounge is open. Another part of the Lounge Secretary's position is organizing the staffing times to make sure each hour is filled. Beta Chapter members work one (and sometimes two and even three!) hour-long slots each week.

The Lounge Secretary is also in charge of overseeing the pledges who take part in the traditional lounge clean up day. This endeavor leaves no stone unturned as every inch is swept, scrubbed, scoured, or steam cleaned. Finally, in conjunction with the Community Service Committee, the Lounge Secretary makes sure we recycle as much as possible. In the lounge, we have recycling bins for glass juice bottles, newspapers, and aluminum cans.

This year, in order to meet the new standards imposed upon us by BOSO, the Business Office for Student Organizations, we rearranged the store part of the

1. Snacks and beverages are collectively referred to as "Product" within the organization. Do not ask us why, we just work here.
2. The staff often becomes feisty when they can not find their coffee or Caffeine-Free Diet Coke.
3. Truth is stranger than fiction: the doughnuts were delivered each morning to the police station!

lounge. This rearrangement made the "product" much more accessible to the casual passerby, and the POD's job of watching the stock simpler.

All in all, the lounge provides a special place for all ECE students and others who wander through the building. To some it is a home away from the dorms or a study place for group projects as is evidenced by the large number of people that can be found in the lounge late into the night.

Workshop Secretary

The Workshop Secretary is responsible for the well-being of the equipment in the lounge and the lab. Looking at the size of Beta Chapter, it may seem like a lot of work, but it is not too bad as long as everything does not break at the same time! The Workshop Secretary ensures that the refrigerators in the lounge for the soda and juices, copier, laser printer, and the terminals are all in working order. Finally, the Workshop Secretary keeps manages the distribution of keys for the lounge and lab which can be quite a mess when the new officers are elected. Tradition has it that the night of elections is when the new officer's term begins, so the newly-elected Workshop Secretary must sort through his new responsibilities and respond to everyone's cries for keys. Election week can be very hectic!

There is, however, one time in the semester that the Workshop Secretary is happy and feels secure in knowing that there is peace and order in the universe. This is when the pledges are starting their pledge projects. This gives the Workshop Secretary the chance to pass some of the repair jobs onto some one else.

The Workshop Secretary works closely with committees within Beta Chapter and the departmental maintenance staff. He (or she) is a permanent member of the Lab Committee and Laser Committee, as these committees are responsible for maintaining Beta Chapter facilities. The contacts developed with maintenance staff and the building supervisor are very important to us. We do our best to work with Purdue and to take care of the facilities they generously allow us to use.

Pledge Trainer

The Pledge Trainer is responsible for recruiting and training outstanding students in Electrical Engineering for membership in Eta Kappa Nu in general, and in Beta Chapter in particular. This year, our Pledge Trainers were responsible for the training of 27 pledges in the Fall and 29 pledges in the Spring. Beta Chapter has been fortunate to continue to find motivated people to pledge our organization which helps to ensure that the chapter will continue to excel as it has done in the past.

The first task of the Pledge Trainer is to obtain a list of the eligible students from the authorities that be at Purdue including the dreaded Business Office for Student Organizations. Obtaining the list early in the semester takes a combination of promptness, sweet talking, and luck. Everyone who meets the academic qualifications is invited to attend the pledge social. At this meeting, we serve refreshments and introduce the chapter to the prospective initiates. The officers, advisors, and active members all participate in telling the candidates what HKN and Beta

Eric Armstrong	Jeff Franks	Bryan Landsiedel
Vidya Atre	Andrew Frech	Michael Michaelides
Shyue-Hong Chuang	John Glotzbach	Hernant Modi
Sea Chen	John Grabarek	Charles Muh
Heather Clark	Matthew Greig	Scott Roller
Kimberly Coy	Timothy House	Timothy Stough
Chetan Desai	Ryan Kehr	Che-Heng Tan
Jill Eck	Robert Knoth	Jeffrey Wells

Members Initiated Spring 1996

Pelin Askit	Robert Hirsh	Chris Niehaus
Ben Bhargava	Mark A. Hoffmeyer	Boon Tiak Pang
Sukhwan Chang	Ryan Huff	CR Powell
Yu Chen	Michael Hutt	Arad Rostampour
Bernard Chong	Robert D. Koudelka	Kaustubh Sanghani
Wendy Coleman	Jonathon Kruger	N. Drew Swalley
Brent Elliot	Mark Kulaczewski	Amanda P. Tan
Robert Fahler	Tarek Kutrieh	Paul Wachtel
Daniel Goehring	Sheng Liu	Wai San Wong
Daniel Gunadi	Melissa Metzger	

Recording Secretary

The Recording Secretary is in charge of recording the minutes of the meeting, reading the old minutes, and keeping attendance. A less official, secondary mission of this position is to devise an entertaining way to start the actives' meeting. In previous semesters, this has included Top 10 list or a clever and sometimes slightly peculiar way to read the minutes that usually manages to poke some friendly fun at one of the officers or former officers.

There is a lot of electronic mail and computer time associated with this office. Attendance for each meeting must be entered into the attendance program and notices of absences sent out. The minutes are entered on the system, and sent via electronic mail to the officers, executive committee members, faculty, and many alumni who want to keep up with the goings on in Beta Chapter. In addition, the minutes of each meeting are posted on a bulletin board in the HKN Lounge and in the local purdue.ecn.hkn USENET newsgroup.

1. When the Recording Secretary has written his block or a big set, these often become "Top 8" or "Top 6" lists.

Chapter are all about. The president shows the candidates an introductory slide show. Names are collected, and interested students are asked to attend three additional pledge meetings that provide the pledge with an orientation of Beta Chapter.

At the first Pledge Meeting, the prospective members are given handouts about Eta Kappa Nu and Beta Chapter and introduced to the pledge process they must complete before being inducted into Beta Chapter. To be inducted, each candidate must complete a service project, pledge board, attend a social function and industry presentation, serve a one-hour lounge duty with an active member, and complete two grueling quizzes about Eta Kappa Nu and Beta Chapter.

The pledge projects provide Beta Chapter another avenue to help the community. During the first part of the semester, the Pledge Trainer contacts the other officers and committees to find enough pledge projects to keep the candidates busy. These service projects undertaken by the pledges require only a few hours of their time and serve to help the community or Beta Chapter.

Projects this year included the once-a-semester-whether-it-needs-it-or-not lounge cleaning, helping in the construction of houses with the Purdue chapter of Habitat for Humanity, helping for an evening at a Lafayette area homeless shelter, cleaning the brass HKN Bridge outside of the Electrical Engineering building, interviewing professors for a "Meet the Faculty" bulletin board in the EE building, lending a hand to the Community Service Committee, and many other useful tasks.

Another task which must be completed by our pledges is the procurement of signatures for the pledge boards. Undergraduate pledges are expected to create a precisely laid out signature sheet according to written instructions. The signatures of ECE professors, officers, actives, and committee chairs need to be collected prior to initiation. This is a good way for the new pledges to meet actives of Beta Chapter and to establish a rapport with the ECE faculty. Pledges are also required to serve one-hour lounge duty with an active, attend a committee meeting and an industry presentation to introduce them to the "normal" aspects of being a member.

After all this training, the pledges are rewarded with an initiation ceremony followed by the end-of-the-semester awards and initiation banquet. Active members attend the initiation to help welcome the new members. Each pledge is provided with a ticket to the banquet that follows, and guests are always welcome. The week after the banquet, the new members attend their first actives' meeting during which Beta Chapter elects its officers for the next semester. It is very encouraging to see new members running for an office the same semester they join! This was the case during both semesters this year. With involvement like this, Beta Chapter can continue to succeed.

The members of Beta Chapter, on the recommendation of the Pledge Trainers, were pleased to welcome the following new members during 1995-1996:

Members Initiated Fall 1995

Adam Albert	Brad Eckert	James Lafien
-------------	-------------	--------------

Some of the highlights from the entertainment provided by this year's recording secretaries include: the "Top 10 Uses for an ADM5 Terminal" and the "Top Ten things Interns did over the Summer but didn't put in their Summer Reports". The entertainment helps get the meeting off to a flying start and encourages people to show up on time as you never know what the recording secretary is going to do next. A little fun amongst fellow members is just another part of the personality that makes up Beta Chapter's unique culture.

Treasurer

The job of the Treasurer sounds simple: deposit the money and write checks. Expand that into reality, and that amounts to counting and depositing well over \$1,000 in small bills per week - no small task in itself. Add to that the checks that must be written to pay bills and reimburse members, and you have a busy person. Therefore, this year, we had an Assistant Treasurer to help out the elected Treasurer.

To meet the accounting guidelines every last penny is categorized. Since we are a student organization at Purdue, we enjoy the benefit of supervision by the Business Office of Student Organizations, BOSO. They must countersign every check, after being convinced it needs to be written. Each check is categorized and accompanied by a receipt. All in all, the BOSO check-approval entails a lot of receipt tracking and verification.

Depositing the money from the lounge and other sales is the next big task. Sometimes Arnold¹ is needed to carry the hundred pounds of change generated weekly to the bank. BOSO may seem like a dark evil that only gets in the way, but their overview and guidance can be very beneficial in reassuring Beta Chapter's financial status. BOSO regularly determine that we were regularly taking in less money than we should which prompted the chapter to buy a safe for the lounge. We found after the first full year of use that we had been losing more money than any of the officers first thought. This increased security has allowed Beta Chapter to improve its financial situation considerably over the past year and is one of the primary factors contributing to our decision to start the Beta Chapter Endowment.

Unfortunately for Beta Chapter, the University accounting guidelines are not sufficient for an organization that sells tens of thousands of dollars in soda pop and snacks every year. To solve this problem, we set up our own accounting system that is a super set of the university's system to internally track income and expenses and provide the university with their requested accounting data. It can be frustrating at times dealing with the red tape, but the software lightens the check balancing load that used to accompany this position. A list of prices in the lounge from last year are given in Appendix D.

1. Which, as any Beta Chapter officer will tell you, is sometimes an all-too-appropriate acronym!
2. As in Schwarzenegger.

Vice President

Formally, the primary function of the Vice President is to preside over meetings which the President is not able to attend. The main bulk of the VP's work is to coordinate the end of the semester awards and initiation banquet. Planning the banquet takes several weeks and includes many small details that must be attended to early in the semester to make sure everything goes well.

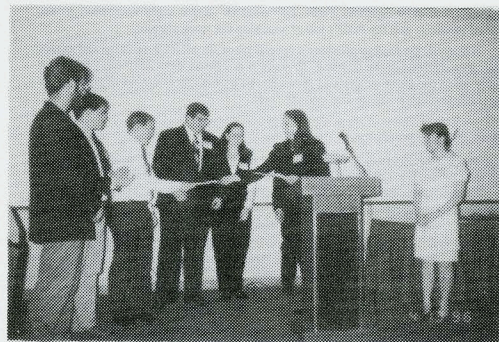
Both of this year's banquets were held at The University Inn in West Lafayette. (the banquet programs can be found in Appendices B and C respectively). Student and faculty attendance at both banquets was fantastic. New HKN initiates and EE faculty are admitted free of charge, but actives and their guests and family members were charged a modest \$5 fee to help offset the cost of the banquet. The dinners served at both banquets made the cost of the banquet tickets quite a bargain.

After the dinner portion of the banquets came the awards and entertainment. The first order of business at both banquets was the recognition of graduating Beta Chapter members with the presentation of their graduation paddles. The paddles are paid for with some of the members' initial membership fees and are ordered by the VP. Both semesters the interim Department head, Professor David Landgrebe had the honor of presenting the paddles to the graduating members.

Following the recognition of the new initiates by the Pledge Trainer, the President and Head Advisor both address the banquet attendees. Dr. Dave's speeches at both banquets covered future directions within the department while Janahan and Jen summarized the accomplishments of the past semester. Traditionally, the President is required to prepare their speech on a napkin during dinner which makes for interesting talks. In fact, the president's speech in the spring was one of the shortest in quite a while (Jen wrote REALLY large on the napkin and quickly filled it up!).

To introduce a bit of humor into the proceedings, entertainment is arranged by the Vice President. Some highlights from the 1995-1996 banquets included the pledge skits which used a pledge going through Beta Chapters pledge process to poke fun at the officers. With entertainment complete the semester's awards were presented.

During the spring banquet, the *Outstanding Teaching Award* was presented to Professor Daniel S. Elliott and the *Outstanding Electrical Engineering Senior Award* was given to Vidya Atré. A list of other award recipients can be found in the "Awards and Scholarship Committee" on page 22.



Michele Cox presents the Community Service Awards

President

The main jobs of the President are to provide direction for Beta Chapter and to run the Actives' Meetings. The goal of the Actives' Meetings is to take care of pressing business in a prompt and orderly fashion. To keep the meeting length reasonable, the items of the agenda are first discussed at an Executive Committee meeting before being presented to the actives. Although not a requirement for the job, being able to "think on your feet" is a useful skill for a president to have as entertaining or amusing material is great for calming the actives down.

An example of how the President directs the organization can be found in the development of the HKN Sophomore Mentoring Program. The goal of the program was to use junior, seniors, and graduate students in the school of Electrical and Computer Engineering to mentor sophomores and those students just beginning in the school.

The President also represents the organization and sometimes the ECE student body at different functions, which includes things from freshman information sessions to the Electrical Engineering Department's Outstanding Electrical Engineer banquet. Many other small jobs fall into the President's job description because they just have to be done. The best thing about being President is being "in charge" of a group of talented and motivated individuals who do not need to have someone in charge.

This year's scholarship committee administered Beta Chapter awards such as the *Elias Sabbagh Outstanding Senior Award*, the *Outstanding Senior in Electrical Engineering*, the *Outstanding Junior in Electrical Engineering*, and the *Outstanding Teaching Award*.

Elias Sabbagh Award: A cash award established by the family of Dr. Elias Sabbagh, a former professor of the School of Electrical Engineering, for outstanding scholarship and extra-curricular activities. The 1995-1996 recipient was Vidya Atré.

Outstanding Electrical Engineering Senior Award: An annual award to a student receiving their undergraduate degree from Purdue that spring, the following summer, or following fall. The 1995-1996 recipient was Vidya Atré. This year we had several outstanding entries. Therefore, Beta Chapter also presented an honorable mention of this award to Michele Cox.

Outstanding Electrical Engineering Junior Award: An annual award to an outstanding Junior Electrical Engineer. The 1995-1996 recipient was David Koudelka.

Outstanding Teaching Award: Awarded to a faculty member whom the members of Beta Chapter believe to have achieved a level of excellence beyond what is expected. The 1995-1996 recipient was Daniel S. Elliott.

In the future, the Awards and Scholarships Committee will also be charged with advertising and collecting applications for the scholarships awarded from the Beta Chapter Endowment. We look forward to our first award within a few years.

Community Service Committee

Our Community Service committee works on several projects that extend our impact beyond the campus borders to help try to make Lafayette a better place to live. In addition to the annual Thanksgiving Food Drive and the continuous collection of aluminum cans and glass bottles, we added several new events. Of course, the main thrust of this committee comes from the enormous energy and interest of the actives themselves!

Once again, with contributions of time and money from the students, staff, and faculty, Beta Chapter held its annual Thanksgiving food drive. In conjunction with the Salvation Army chapter of Lafayette, we purchased, assembled, and distributed Thanksgiving food baskets to sixty-six Lafayette-area families. More than thirty members helped with the food drive.

This year Beta Chapter also donated time, food, and effort to the Lafayette Urban Ministry Homeless Shelter. The shelter is open from 8 p.m. to 6 a.m., and gives food and shelter to people that do not have a place to live. Beta chapter actives cooked dinner, helped with check-in, cleaned, and stayed the night to help out Lafayette's homeless population on several occasions during the year. Also, this year, the department created a for-credit class called "Engineering Projects In Community Service" or EPICS for short. Several Beta Chapter members participated in the projects upon which EPICS is modeled.

During the pledge process, HKN participated in several community service events. One of the most popular was working with Habitat for Humanity in building homes. The Majority of the pledges participated in this activity!

Beta Chapter currently provides collection bins for aluminum cans and glass bottles throughout the HKN student lounge. The aluminum cans and bottles are taken to a local recycling center as soon as the total number sitting in storage reaches critical mass. Expanding the program is currently under discussion and may involve a joint effort with the Purdue Student Government.

Beta Chapter maintains a collection of graduate composites of EE students. These large photos, chronicling the graduating classes from 1894 to the present, are very popular on Homecoming weekend, when alumni stop by to see how funny their hair looked "back then". Alongside the composites are our "Meet the Professor" boards. Interviews and photos of new professors are posted every semester to introduce them to the student body. We also updated a faculty photo board, with small photos of every professor in the department.

Homework Committee

One very popular service to both professors and students is done by the Homework Committee. The Homework Committee keeps a collection of three-ring binders, one for each participating EE class, that contain solutions to homework assignments. The solutions are provided by the professors, and are kept in the lounge in a convenient location. Judging by the condition of the solutions at the end of the semester, this seems to be a very popular attraction to the students.

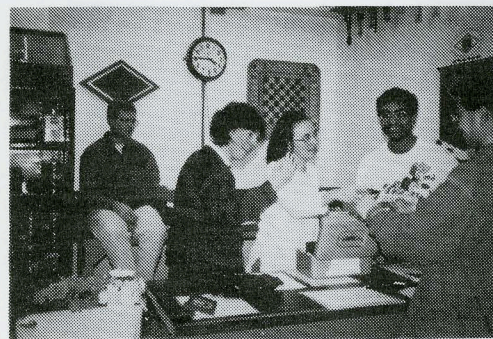
Lab Committee

Beta Chapter's student lab is yet another popular attraction. This lab is the only one open to students who are either interested in working on projects outside of class, or creating personal ones. The lab is fully equipped with a variety of donated parts, equipment, several ADM5 terminals, our laser printer, and an IBM computer. The donated parts include everything imaginable from capacitors to microprocessors and are free to those in need. Head Advisor Dave Meyer has helped keep the lab up to date with some of the undergraduate lab courses by donating extra equipment that is used in several digital lab courses.

Laser Printer Committee

The Laser Committee is in charge of maintaining the accounts for using the laser printer located in the lab. The laser printer, named ea2, is a public access PostScript Apple LaserWriter. Originally ea2 was one of the only laser printers available for undergraduate use on the Engineering Computer Network (ECN) and is still the only printer which you can purchase any number of pages on. Most public-

1. On a bookshelf, beside the HKN copier should you ever find yourself in the lounge looking for EE 362 solutions.



Prof. Brodley uses the "Right hand Rule" to figure out the total.

World-Wide Web Committee

This committee supports a World-Wide Web home page for Beta Chapter. Our web server runs on tempest.ecn.purdue.edu, an IBM RS/6000 generously donated by Professor Dietz from his pool of research machines. The URL to locate the index of the Beta Chapter web pages is: <http://tempest.ecn.purdue.edu/8001/HKN/index.html>. From where you can jump to any location within the Beta Chapter web. Beta Chapter currently features a variety of services, ranging from potentially useful information to pure entertainment.

One of the most popular areas include the "Virtual Lounge Tour," where browsers can click their way through a guided tour of our student lounge, including color pictures and sounds. Web users from as far away as Germany and Switzerland have taken the tour. In addition, sections of the tour offer information on the history of the Electrical Engineering Building and the eclectic collection of things hanging from the ceiling of the lounge.

Also included is an excellent section featuring the "Interactive Shield." By clicking on different sections of the HKN shield, users can read descriptions of what each component signifies. Another contribution is "Doing Research on the Internet," containing a collection of hyperlinks to other pages related to a general electrical engineering topic. Instead of searching the Web themselves, users can access our page and quickly find sites dedicated to topics like optics, computer engineering, solid-state, and signal processing.

use engineering printers require that a block of 200 pages be purchased. Also, our printer is among the finest in the department, and is often used by professors seeking high quality.

Resume Book Committee

One of Beta Chapter's most important projects for the Purdue Electrical Engineering student body is the publication of the annual Electrical Engineering Resume Book. The members of this committee are responsible for all aspects of the book's publication, including publicity, printing, shipping, and maintaining the software that is used to format the resume book. The book is open to all students in the School of Electrical Engineering and is made available to companies to aid in their recruiting process. Resumes are submitted by running a custom program installed on the Engineering Computer Network and maintained by some of our actives and alumni. This year, Beta chapter used a new World Wide Web interface for the resume program. This allowed students to easily enter their resumes from a fill in form on their web browser. Last year, 270 undergraduate and graduate students entered a resume in the book. More than 75 companies received the official Beta Chapter resume book through the Purdue Electrical Engineering Industrial Institute or at a cost of \$40 per book.

Professors on POD Committee

The Professors on POD Committee places professors in the HKN lounge in an attempt to facilitate a greater level of communication between students, faculty, and the staff in the School of Electrical Engineering. Beta chapter members asked professors and staff members to volunteer an hour whenever they could to serve as the person on duty, or POD, in the HKN Lounge. You can imagine the surprise on student's faces when their professor who just lectured a class is the one making change! This program proved to be a great success and we plan to continue and expand it in the future. Our thanks go to both of these groups of faculty and staff for helping Beta Chapter foster student-faculty interaction.

Looking Forward



It would have been easy for the members of Beta Chapter to give up under the pressure of one of the toughest challenges that was faced by Beta Chapter. Instead, the actives banded together, determined to build on the legacy that had been left behind by the previous members. The major issue at hand was to reorganize the lounge and make it to be profitable. For, although we are a non-profit organization, the EE Student Lounge provides us with much of the necessary funding to maintain our active involvement in the Purdue community. The Lounge was reorganized during winter break in order to minimize the inconvenience to the loyal patrons of the Purdue community. Several actives cut their vacations short in order to complete the rearrangement of the Lounge in time for the new semester. The fruits of their labor was realized at the end of the year when Beta Chapter was able to contribute to the Eta Kappa Nu scholarship established at Purdue University.

One of the greatest attributes of HKN is its contributions to the school. One example is the Eta Kappa Nu scholarship which was established during the 94-95 school year with an initial endowment from Beta Chapter. This year, using some of the proceeds from the lounge operation we were able to add to the previous seed money. We are very proud of this accomplishment and are certain that the scholarship will be used to help ECE students for years to come.

As in the past, Beta Chapter stresses faculty student interaction in an outside the classroom setting as well. For this reason we continued the "Professor on POD" program. Members of the Electrical and Computer Engineering faculty donated an hour of their time to mind the EE Student Lounge. Faculty members were also invited to all of our Friday evening TGs as well as our Banquets. As the year went on these efforts became more and more successful as attendance from both actives and the faculty continued to increase. We are confident that this trend will continue and play an important role in fulfilling the needs of the ECE community at Purdue.

We are quite proud of Beta Chapter's accomplishments this past year and are optimistic about the future. With the capable leaders and the dedicated members, Beta Chapter will continue to make student life at Purdue a fun and learning experience.

The web pages also carries information about the current officers and committee heads, including electronic mail addresses contact information and sometimes even pictures. In addition to information on the officers of Beta Chapter, the web has proven to be a great place to announce upcoming social events and post pictures from past social events. Occasionally, the web committee runs a contest to allow readers to caption some of the more "interesting" pictures taken at an event.

Finally, our newest addition to the web page is a web-based version of the resume program (see "Resume Book Committee" on page 25) to allow students to enter their resume for the resume book over the web. This greatly increased the ease of entering resumes into the HKN Resume book.

Appendix A: The Beta Chapter Scholarship Endowment



A "Brief" History:

During an extensive audit of Beta Chapter in the Fall of 1994, the business office at Purdue found that the chapter, while not posting significant losses, was not taking in as much as it should be. This event prompted Beta Chapter to install a safe in the lounge in an attempt to increase security. By the end of the following semester it became apparent that a significant amount of money had been disappearing from the lounge prior to the installation of the safe.

In the Spring of 1994 it became apparent to Exec-Comm that if trends continued we would end up earning significantly more money from the lounge than was needed to run the organization. Because the chapter is non-profit, the officers decided that Beta Chapter should attempt to find a way to return the new-found profits to the students and department. This realization started a discussion of how to best use the money that would span three sets of officers.

During the Fall of 1994 Beta Chapter's bank account had been steadily growing for nearly a year. At this point, Exec-Comm decided that we were not seeing a "transient" effect and that, yes, we really were making more money than was needed. Exec-Comm began looking in earnest for ways to return our profits to the student body and department. It was clear that we had very little flexibility to reduce our profits by cutting prices in the lounge as we are not allowed to compete with the university. Other options would have to be considered. Of the ideas discussed, some serious and some tongue-in-cheek, two stood out: a scholarship, and new equipment for the lab.

Late in the Fall of 1994, Beta Chapter met with Dr. Richard Schwartz to discuss the options for offering scholarships. It was at this time that Dr. Schwartz suggested that Beta Chapter consider sending an endowment to be used for scholarships. The various options were presented to the membership at the end of the fall semester and debated at several subsequent meetings. In the spring, the actives agreed in principle to the creation of an endowment and asked Exec-Comm to further refine the idea. After deciding that the chapter could donate \$10,000 without endangering our financial situation, Exec-Comm developed potential selection criteria for the scholarships from the endowment. The membership decided that the scholarships would be awarded to Sophomores based on academic achievement and service to the campus and community.

1. We wish we could say that this was not a problem of theft, but there appears to be no other explanation.

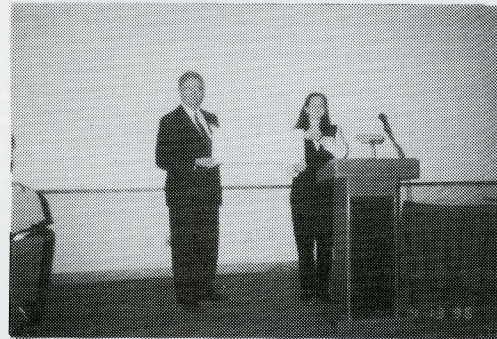
On March 8, 1995 the endowment was officially presented to the department. Three semesters after the issue was first addressed in Exec-Comm, the Beta Chapter Endowment was publicly announced at the Spring Banquet with the presentation to Dr. Schwartz of a check for Beta Chapter's donation. This ceremony would have never occurred had it not been for the work of Beta Chapter membership, past and present.

The 1995-1996 School Year:

Last year Beta Chapter sent out letters to our alumni to solicit donations for the new scholarship fund. As it turns out, close to \$5,000 was sent in by Beta Chapter Alumni. With the interest that had collected on our original \$10,000 seed money, we were only \$3,000 short of having \$20,000 in our scholarship fund. At the Spring 1996 Banquet, Beta Chapter officially presented a donation of \$3,000 to our scholarship fund to the department.

Later, during the summer, Dr. Landgrebe thanked Beta Chapter for its donation in a letter to summer and fall 1996 president, Mitch Theys. Beta Chapter also received thank you notes from the university.

Jen Fleeter presents Dean Schwartz with the endowment check.



Appendix B: The 1995 Fall Banquet



The Fall Awards and Initiation Banquet was held at the University Inn in West Lafayette, Indiana on December 1st. The banquet provided an opportunity to recognize members of the new pledge class as well as other individuals receiving awards. Unlike previous semesters, this fall the banquet was held the evening before the initiation. The program and a few pictures from the Fall banquet are shown below.

Fall 1995 Banquet Program

University Inn/University Inn
Eta Kappa Nu
Beta Chapter

Awards and Initiation
Banquet

December 1, 1995
University Inn

Eta Kappa Nu Advisors

Dr. David Meyer
Dr. George Wodicka
Dr. Hank Dietz
Dr. Anthony Maciejewski
Dr. Harnus Thompson
Dr. Michael Zolnowski

Greeters

Michal Bujak
Jennifer Frohn

Officers

President: Jonathan Vivekanandan
Vice President: Michele Cox
Treasurer: Daniel Mowry
Recording Secretary: Lori Nottingham
Pledge Trainer: Thomas Willis
Lounge Chairs: Paul McGary, Alan Burstein
Workshop Chair: Albert Reuber
Industry Chair: Riewik Chatterjee
Funstuff Chair: Evelyn Henderson

Program

Visit President's Welcome
Invocation: Dr. Harnus Thompson

Dinner

Recognition of Initiates: Thomas Willis

Dean's Address: Dr. Richard Schwartz
Head Advisor's Address: Dr. David Meyer
President's Address: Jonathan Vivekanandan

Recognition of Officers: Jonathan Vivekanandan
Recognition of Committee Chairs: Michele Cox
Presentation of Lounge Awards: Alan Burstein, Paul McGary

Praying of Obedience: Dr. David Landgrebe

Menu

Corvud Roast Beef
Marinated Baked Chicken
Wedge Salad
Vegetarian Lasagna
See Chef

Baked Potatoes
Bacon Fried
Mixed Vegetables
Corn

Assorted Salads

Assorted Cakes and Pies
Savory House
Assorted Fruit Tarts

Coffee, Tea, and Milk

Cash Bar

Etia Kappa Nu urges
members not to drink and drive.
Rides are available on request.

Initiates

Adam Albert
Ery Armstrong
Wesley Allen
Shyue-Hong Chang
See Chef

Hannah Clark
Katheryn Gray
Cristin Deane
Jill Eise
Jared Larson
Jeff Finkas
Andrew French
John Glotzbach
John Grotzke

Matthew Ong
Timothy Housel
Ryan Kiefer
Robert Knapp
James LaFave
Bryan Landis
Matthew Michael
Hannah Mott
Charles Muth
Tom Miller
Cristy Jough
Chun-Hong Tin
Jeffrey Wicks

The Letter From Dr. David Landgrebe Accepting Beta Chapter's Donation

PURDUE UNIVERSITY

SCHOOL OF ELECTRICAL AND COMPUTER ENGINEERING WEST LAFAYETTE INDIANA 47907-1285

June 14, 1996

Mr. Mitchell Theys
President
Eta Kappa Nu
Mail box 011
Electrical Engineering Bldg.

Dear Mitch:

My sincere thanks to you and the active members of Beta Chapter of Eta Kappa Nu for once again making a very generous gift to the School of Electrical and Computer Engineering. The sophomore scholarship fund was an excellent idea, and the continuing interest the chapter has shown has been very special.

We'll set the spring semester of 1997 as a target date to make the first award, and I'll convey that information to Dr. W. Kent Fuchs when he assumes the position as head of the school in July.

Sincerely,

David A. Landgrebe
Professor and Acting Head

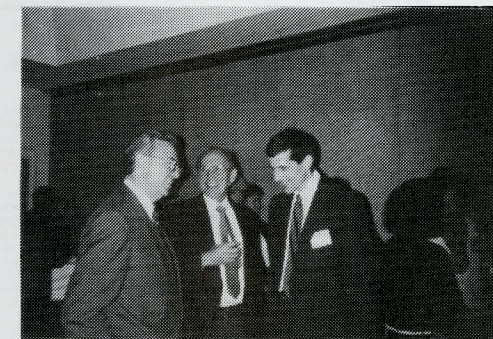
DAL/7ms

Phone: (317) 494-3539
FAX: (317) 494-3544
EE Building Rm. 122
landgre@ecn.purdue.edu

In setting up this endowment, Beta Chapter has several well-defined goals in mind. We want to use our money in a way that would outlast the finite lifetimes of physical gifts such as lab equipment. We want to provide a means for our gift to grow so it can reach more people as time goes on. We want to use the gift to encourage the qualities that Eta Kappa Nu stands for: academic excellence and service to others. And finally, we want to help attract outstanding students to our department.

To ensure that the endowment grows and has the potential to impact more and more students as time goes by, we have elected to award scholarships from the interest earned on the principle with any unused money being returned to the endowment to help it grow. Beta Chapter itself is committed to making further donations as our financial situation allows. Also, we are in the process of contacting Beta Chapter Alumni to ask them to contribute to the endowment.

We have great hopes for this endowment: a gift which Beta Chapter membership, past and present, can take great pride in being associated with. It is certainly one of Beta Chapter's greatest contributions. We sincerely hope that in the not-too-distant future, we may return to Purdue as Alumni and find that the endowment has grown beyond our wildest dreams.



ECE Professors plot another challenging final exam.



Students & faculty socialize at the Fall Banquet.

Appendix C: The 1996 Spring Banquet



The Spring Awards and Initiation Banquet was held at the University Inn in West Lafayette, Indiana on April 13th. The banquet provided an opportunity to recognize members of the new pledge class as well as other individuals receiving awards. As per tradition, the banquet was held the evening following the initiation ceremony for the new members of Beta Chapter. The program and a few pictures from the Fall banquet are shown below.

Spring 1996 Banquet Program

Eta Kappa Nu
Beta Chapter

Awards and Initiation
Banquet

April 13, 1996
University Inn

Eta Kappa Nu Advisors

Dr. David Meyer
Dr. George Wodicka
Dr. Hank Dietz
Dr. Anthony Maciejewski
Dr. Michael Zolnowski

Officers		Program	
President	Jennifer Fleeter	Vice President's Welcome	Olivia Rasmussen
Vice President	Clara Rasmussen	Introduction	Dr. Hanna Thompson
Treasurer	Tim Habel	Dinner	
Recording Secretary	Mark Wiley	Presidential Address	Jennifer Fleeter
Finance Treasurer	Randy Chatterjee	Recognition of Officers	Randy Chatterjee
Lounge Chair	Kathy Wagner	Head Advisor's Address	Dr. David Landgrebe
Workshop Chair	Albert Rasmussen	Recognition of Officers	Jennifer Fleeter
Lobby Chair	Valya Alev	Head of School Address	Dr. David Landgrebe
Poweroff Chair	Jill Eck	Award Presentation	Jennifer Fleeter
		Recognition of Committee Chair	Olivia Rasmussen
		Recognition of College Awards	Alan Burstein
		Community Service Awards	Kathy Wagner
		American Head's Address	Dr. Robert Purves
		Prudential of Oklahoma	Dr. David Landgrebe

Menu	Initiates
<p>Curry Roast Beef</p> <p>Chicken Casserole</p> <p>Turkey and Stuffing</p> <p>Wine and Cheese</p> <p>Assorted Vegetables and Salads</p> <p>German Chocolate Cake</p> <p>Peanut Pie</p> <p>Coffee, Tea, and Milk</p> <p>Cash Bar</p> <p>All Kappa Nu orders must be in hand and done before 10:00 pm on request</p>	<p>Plain Aali</p> <p>Ben Bhatnagar</p> <p>Sukhwan Chang</p> <p>Ty Chen</p> <p>Bernard Chong</p> <p>Henry Coates</p> <p>Brian Egan</p> <p>Robert Factor</p> <p>Daniel Gonting</p> <p>Daniel Leland</p> <p>Raman Hunk</p> <p>Mark A. Hoffmeyer</p> <p>Ryan Huff</p> <p>Michael Hui</p> <p>Ruben D. Koudack</p> <p>Jessiah Kruger</p> <p>Mark Kuschnierz</p> <p>Tara Kuzuh</p> <p>Sheng Lee</p> <p>Melissa Metzger</p> <p>Chao Nishino</p> <p>Brian Tai Ping</p> <p>Ch P. Peral</p> <p>Arnel Romanorum</p> <p>Kenneth Sanguino</p> <p>N. Drew Saxony</p> <p>Armando P. Tai</p> <p>Pui Wai Tang</p> <p>Wei Sun Wang</p>



Twillis & Brian Leitner smile for camera!



A new initiate shmooses some of the officers.

Appendix D: The Lounge



Introduction:

The ETA Kappa Nu lounge is maintained as a for profit concern to provide funding for the organization. It must be thereby operated much as a regular business as regards to maintaining inventory and money controls. This document will promulgate procedures for the operation of the lounge up to the point of placing receipts (money to most people) into the safe. From then on, the treasurer will handle the money and make deposits.

Periods of Operation:

The lounge will be open from 7:30 am to 5:00 pm, Monday through Friday, during the main semesters. During the summer semester, reduced hours of operation will be announced, usually only in the mornings. Between semesters, the lounge will be closed.

Daily Operation:

During the main semesters, the lounge will be open from 7:30 am to 5:00 pm. The first Person-on-Duty, POD, should arrive by 7:00 am to get the lounge ready to open by 7:30 am. From then on, all PODs should arrive 10 minutes early for the POD duty. For example, if someone has the 9:30 POD, they should arrive at 9:20. This results in two people in the lounge working between classes when most customers are in the lounge. If the oncoming POD does not show up and the off going POD must leave, the inner lounge must be shut down, i.e. close and lock the inner lounge door. The off going POD should send e-mail to "hkn" notifying the officers of this occurrence.

All PODs have specific duties to their particular POD time as well as general duties that all PODs share in order to keep the lounge running in a neat and orderly fashion. The duties are delineated below.

All PODs:

- 1) All PODs will now take money from the customer and make change. Only about fifty to sixty dollars should be in the money drawer. Excess money should be placed in the safe. Paper clip 20 \$1 bills together before putting them into the safe.
- 2) RESTOCK! During slow portions of the hour, restock the lounge.
- 3) Pick up trash in outer lounge. Remove excess debris from the tables.
- 4) When glass and aluminum containers are full, change the bags. Store full bags.
- 5) Note any wastage of food items on Waste Control sheets so inventory control can be maintained.

7:30 POD:

- 1) Arrive by 7:00 am so you can get the lounge ready to open.
- 2) Unlock all the stock.
- 3) Go get the donuts.
- 4) Bring in exponents.
- 5) Open the HKN lab and turn on the video system.
- 6) Drain water out of coffee maker and make coffee.
- 7) Unlock the money drawer and be ready to open.

8:30 POD:

- 1) Clean up the lounge. Especially the donut and coffee counters.
- 2) Place excess money in safe.

9:30 POD:

- 1) Place excess money in safe.
- 2) Check to see if the Lounge Officer scheduled any deliveries for that day on the delivery notice. If so, when the delivery comes in, verify it and sign for it.

10:30 POD:

- 1) Wipe off tables in lounge.
- 2) Place excess money in safe.
- 3) Check to see if the Lounge Officer scheduled any deliveries for that day on the delivery notice. If so, when the delivery comes in, verify it and sign for it.

11:30 POD:

- 1) Put paper in laser printer.
- 2) Wipe off counters.
- 3) Place excess money in safe.

12:30 POD:

- 1) Place excess money in safe.
- 2) Monday: Dust wooden counter tops.
- 3) Tuesday: Sort chip boxes by date, place earliest on top.
- 4) Wednesday: Water plants in lounge area.
- 5) Thursday: Sort chip boxes by date, place earliest on top.
- 6) Friday: Dust wooden counter tops.

1:30 POD:

- 1) Clean sneeze shield panels with Windex.
- 2) Place excess money in safe.

2:30 POD:

- 1) Clean microwave over and toaster oven.
- 2) Place excess money in safe.

3:30 POD:

- 1) Take all empty cardboard boxed out to the dumpster.
- 2) Place excess money in safe.

4:30 POD:

- 1) Clean out lounge, vacuum carpet.
- 2) Sweep inner lounge.
- 3) Poor out old coffee, write down how much coffee was thrown out on the Waste Control Sheet, and fill coffee maker with water.
- 4) Place excess money in safe.
- 5) Place the rest of the money in the wooden money box, lock money box with key lock.
- 6) Close the lounge at 5:00 pm.
- 7) Lock up the stock.

Ordering Goods:

The Lounge Officers will order goods for delivery. Official delivery times will be from 9:30 am to 11:30 am. The Lounge Officers will try to have deliveries come during these times.

The Lounge Officers will make a list of the items being delivered on a specific day on the post the list next to the POD station so the PODs will know what is going to be delivered and can verify the delivery before signing for it.

Shopping Trips:

The Lounge Officers will have to go to Sam's every one to two weeks for certain items on sale in the lounge. For this reason, HKN maintains a business membership to Sam's, which is in the possession of the Lounge Officer. The Lounge Officer will keep records of what is purchased for the inventories.

Note: If the Lounge Officer makes a shopping trip and purchases something for HKN that is not directly for the lounge, he or she must purchase that item separately so that proper money accounting can be maintained.

Inventories:

The Lounge Officers will perform an inventory near the end of every month. Inventories will also be done at the beginning and end of every semester. Finally, an inventory must be done on June 30, because this is the end of the fiscal year.

During an inventory, the Lounge Officers will count all goods in the lounge. Then using receipts and purchasing trip records, which were verified at time of purchase or delivery, they will determine how much stock was purchased during the entire inventory period. With this data, total sales will be calculated, and the results passed on to the treasurer, along with all receipts.

Money Deposits:

The money received by the lounge operation will be counted by the treasurers and deposited weekly. For example, the treasurers will allow the money to collect in the safe from Monday through Friday. They will both count the money on the weekend, and one of them will deposit the money on the next Monday. This was only an example. The treasurers can pick their own schedule, provided that deposits are made every 5 business day period.

Note that at the end of every semester and on June 30, the change fund must also be deposited. A new change fund must be made at the beginning of every semester and July 1.

Spring 1996 Sale Items

Canned Cokes	\$0.50
Plastic 20oz Soda Bottles	\$0.75
16oz Juice Bottles	\$0.75
12oz V-8 Juice Cans	\$0.75
Drop Coffee	\$0.25
Instant Coffee	\$0.25
Instant Decaffeinated Coffee	\$0.25
Instant Tea	\$0.25
Hot Chocolate	\$0.25
Donuts	\$0.30
Cinnamon Rolls	\$0.35
Bagels	\$0.35
Light Popcorn	\$0.50
Soup Cups	\$0.50
Chips (all varieties)	\$0.35
Nabisco Cookies	\$0.35
Brownies	\$0.35
M&M Plain	\$0.50
M&M Peanut	\$0.50
Granola Bars	\$0.35
Mints	\$0.05

Annual HKN Song and Dance Review

OK, so it was really the Fall Initiation and Awards Banquet, but I got your attention didn't I.

Last semester's banquet was held on December 1 at the University Inn. It was an exciting evening complete with toilets flushing, seniors being paddled, and system administrator impersonations.

The evening began with trips to the cash bar and sounds of professors, including the new Dean of Engineering, asking "My ECN accounts are going to be deleted at the end of the month, is this someone's way of telling me I am out of a job?" Dinner was buffet style with only a few professors being injured as the stampeped of starving graduate students rushed the serving line.

After dinner, the real fun began. Throughout the evening, tension had been building as everyone wondered what type of entertainment was going to occur. Would ExecComm poke fun at the faculty? the pledges? Would the pledges be funny? flop? Would the esteemed faculty do a skit? After the pledge class was recognized, they performed a skit. Depicting the pledge process and surviving life as an ECE student, the pledges did several scenes. Included in the skit were the difficulties in getting more quota from the systems administrator, male students attempting to ask out a female, tutoring an IE in EE201, writing an English paper, and experiences with a demanding pledge trainer.

Amongst the entertainment, special awards were given to the former head of the Electrical and Computer Engineering Department and current Dean of Engineering, Richard Schwartz, and retiring assistant head of Electrical and Computer Engineering, Hannis Thompson, to honor all of their contributions to and support of HKN during their tenure in the department.

Daniel Mowry, the treasurer for three semesters, was given a flushing, with sound effects, toilet bank and a change sorter to thank him for an outstanding job. The officers and committee heads were paddled by interim head of the department, David Landgrebe, and it was time to party. Many thanks to Mitch Theys for volunteering his home for the after banquet party.

Michele Cox
HKN, Vice President
Fall 1995

THE OLD HKN LOUNGE IS HISTORY!!!!!!

... To introduce the new and improved Lounge ... made with 100% Vegetable Oil

The HKN Lounge has undergone some changes in the past semester. We have cut back on items and rearranged the inner lounge. The large cooler that previously divided the room into halves has been rotated to create a large open area. The POD desk is now placed right by the door to the outer lounge. The dummy terminals as well as the laser printer have been moved to the HKN lab, which is the new hangout of the terminal junkies. The inner lounge's continuing focus is still to be home to the junk food junkies.

Spring 1996 HKN Lounge Price List

20oz Cokes	\$0.75
16oz Juices	\$0.75
12oz V-8 Cans	\$0.75
12oz Coke cans	\$0.50
Coffee	\$0.25
Hot Chocolate	\$0.25
Granola Bars	\$0.35
M&M's	\$0.50
Various Chips	\$0.35
Brownies	\$0.35
Various Cookies	\$0.35
Mints	\$0.05

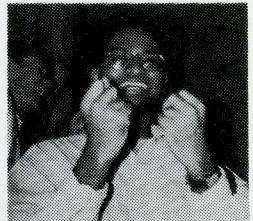
HKN Lounge Spring 96 Co-Chairs, Alan Burstein & Kathy Wagner

Appendix E: The Alumni Newsletter



The President's Address (... Hit it JV ...)

It is hard to believe yet another semester has come and gone. As I await the next phase of my life to begin, I reflect on the semester gone by. Beta chapter's hard work and the members' dedication to excellence was recognized once again as the organization was awarded its 14th consecutive "Outstanding Chapter Award" for the 1994-1995 school year. Congrats to Twillis, Ken and all the actives for their contributions.



Jonathan secretly enjoys the power of presidents.

Many thanks to Jen Fleeter for pulling off another successful Thanksgiving food drive, and a special thanks to all the drivers who helped in delivering the 500+ food baskets to the needy families throughout the Lafayette Metropolis.

We also have a very enthusiastic group of new initiates who will add to the great legacy that this organization has had so far. As part of their pledge project, some of the pledges took some time off from school and helped Habitat for Humanity build houses for the underprivileged. This was such a pleasant experience for both organizations, that the current community service chair, Michele Cox, is trying to organize projects for the spring 1996 semester as well.

The upcoming semester promises to be an exciting one as the new officers have implemented some new ideas to solve some old problems and are discussing ways to get even more involvement from the actives. These new ideas brought by the semester's change of officers and actives keeps Beta Chapter growing in new directions each semester.



In closing, I would like to thank all the officers, committee chairs, and the actives who made this a great and memorable semester. I wish good luck to all the new graduates in whatever endeavors you may take up and ask you to keep in mind that HKN is only a few clicks away in the age of the information superhighway. Please keep in touch with Beta Chapter.

Jonathan Visekanandin
President

HKNers ... Just Wanna Have Funstuff

Eta Kappa Nu is not just an honor society; it is an organization that fosters the feeling of fraternity through social outlets. As Social Chairperson of Eta Kappa Nu the Fall Semester, it was my responsibility to plan and organize the events. Last semester the events were scheduled approximately every two weeks, on Fridays. All of the events sponsored by the organization were open to HKN members, friends, and family.

The activities varied from socializing at restaurants to bowling to Wallyball. The first event of the semester was the HKN/ACM picnic which was held Sunday, September 17th, 12pm at Happy Hollow Park. Not only did we partake of the food, but also HKN and ACM engaged in a friendly, yet competitive game of softball. Unfortunately, we were not victorious, better luck next time. The next social event was held at Pepe's Mexican Restaurant. There were approximately 35-40

people in attendance including friends of HKN members, faculty, and staff. On October 20th a friendly game of Wallyball was planned. Two courts were reserved at the Co-Rec and a total of 14 people attended. The Wallyball games lasted between 5-7pm. On November 3rd, from 8pm there was a Bowling social held at the PMU Bowling Lanes. There were 8 lanes reserved. At this social event, 30-35 people were in attendance. Our last social event of the semester was a dinner at the Lafayette Brewery on November 17th scheduled for 6pm. This was the largest social of the semester with a gathering of approximately 60 people.

Overall, Eta Kappa Nu had an exceedingly prosperous social schedule. I'd like to express my gratitude and appreciation to everyone who contributed to the success of the socials last semester.

Ervin H. Henderson
Fall 95 Funstuff Chairperson

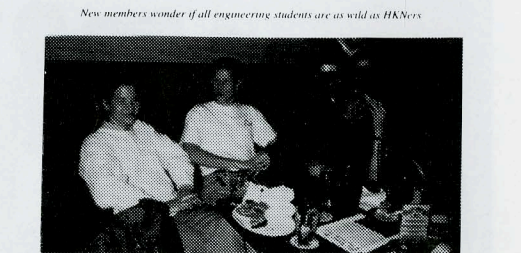
The ONE ... the ONLY ... HKN Thanksgiving Food Drive '95

This year, HKN's annual Thanksgiving Food Drive was a great success. HKN was able to feed sixty-six families in the Greater Lafayette area. This year's food basket contained a lot of good stuff including a turkey, a loaf of bread, a 5 lb. bag of potatoes, 2 cans of corn, 2 cans of beans, cranberry sauce, and Jell-O. Once we had all the food, we filled the food baskets in record

time - 15 minutes!! We even had a professor help out! Then, all the baskets were stored in our "walk-in-cooler" AKA the HKN lab.

In the morning, all the baskets were delivered around Lafayette. This event had an extremely positive impact on the community, and was very rewarding for all those that participated.

Jennifer Fleeter
Fall '95 Community Service Chairperson



New members wonder if all engineering students are as wild as HKNers.



University of Hawai'i at Mānoa

Department of Electrical Engineering
Holmes Hall 483 • 2540 Dole Street • Honolulu, Hawai'i 96822
Telephone: (808) 956-7586 • Facsimile: (808) 956-3427
E-mail eeoffice@wiliki.eng.hawaii.edu

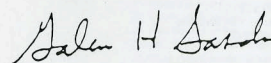
Dr. Alan Lefkow
Chapter Award Program
Eta Kappa Nu Association
17 Jacobs Road
Thiells, NY 10984
May 7, 1998

Dear Dr. Lefkow,

Enclosed please find a color photograph of the remaining members of the Delta Omega Chapter 1996-1997. From left to right is Marney M. Furoyama, Jenny Huang, Michelle G. Kim, Kevin W. Miyashiro, Wendy M. Okamura, Michael Masaki, and the advisor (me, tallest one), Galen Sasaki. Here I am presenting the plaque to Wendy, who was the president for that year. The presentation was held at the annual HKN banquet on April 18, 1998.

If you need any additional information, please feel free to contact me. Please send me an acknowledgement that you have received this letter. Thanks.

Sincerely,



Galen H. Sasaki



Department of Electrical Engineering
University of Hawaii at Manoa
2540 Dole Street
Honolulu, HI 96822 USA
Tel: 808-956-6103. Fax: 808-956-3427
Email: sasaki@spectra.eng.hawaii.edu