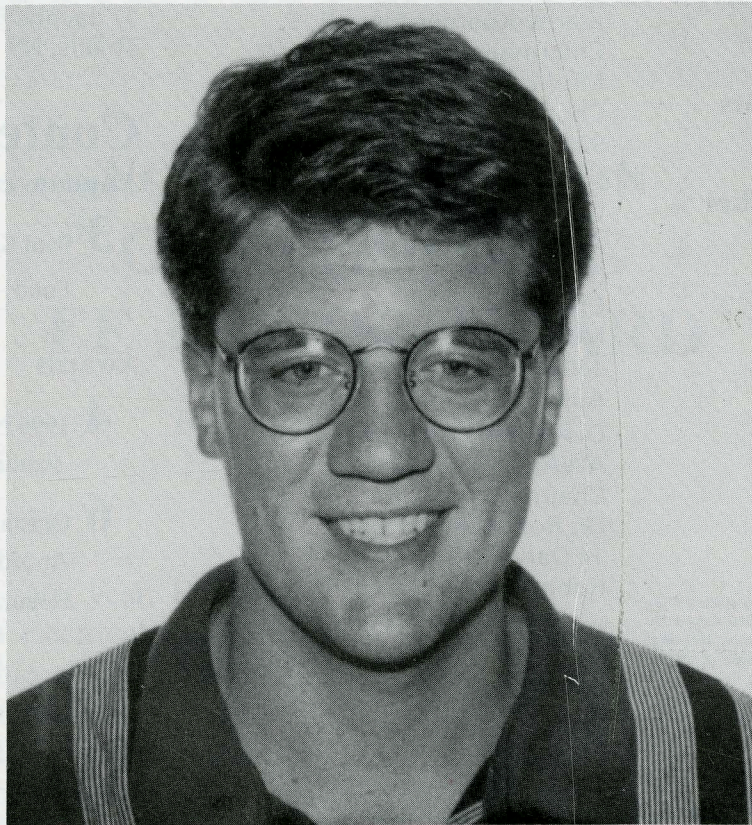
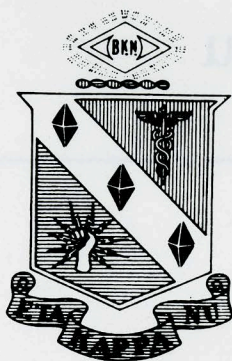


# BRIDGE of Eta Kappa Nu



**Ryan J. Mattison**  
1996 Winner  
Outstanding EE Junior Award



**Editor and Business Manager**  
**J. Robert Betten**

**May 1997**  
**Vol 93 - No. 3**

**Contributing Editors**  
**Alan Lefkow**  
**Laureen K. H. Parker**



The BRIDGE is published by Eta Kappa Nu Association, an electrical engineering honor society. Eta Kappa Nu was founded at the University of Illinois, Urbana, October 28, 1904, that those in the profession of electrical engineering, who, by their attainments in college or in practice, have manifested a deep interest and marked ability in their chosen life work, may be brought into closer union so as to foster a spirit of liberal culture in the engineering colleges and to mark in an outstanding manner those who, as students in electrical engineering, have conferred honor on their Alma Maters by distinguished scholarship activities, leadership and exemplary character and to help these students progress by association with alumni who have attained prominence.

The BRIDGE is published four times annually—November, February, May, August and is published by Eta Kappa Nu, Haywood Printing Company, 5th & Ferry Sts., Lafayette, Indiana. Second class postage paid at Lafayette, Indiana. Eta Kappa Nu Association, Subscription price: three years, \$15, Life Subscription, \$60.

Address editorial and subscription correspondence and changes of address to:

**HKN BRIDGE, P.O. Box 2107**  
**Rolla, MO 65402**

**Postmaster: Send address changes to: HKN Bridge, P.O. Box 2107, Rolla, MO 65402.**

#### **INTERNATIONAL EXECUTIVE COUNCIL**

President: Robert I. Egbert  
Vice President: John D. Wolf  
Executive Secretary: J. Robert Betten

#### **INTERNATIONAL BOARD OF DIRECTORS**

Bruce DeMaeyer  
Richard J. Gowen  
Ronald Hoelzeman  
Mohammad Shahidepour

#### **AWARD COMMITTEES**

##### **OUTSTANDING EE STUDENT AWARD COMMITTEE**

(Zerby-Koerner Award)  
Chairman:

Mr. Marcus D. Dodson, P.E.  
Consulting Engineer  
9302 Grindlay Street  
Cypress, CA 90630

##### **OUTSTANDING EE JUNIOR AWARD COMMITTEE**

(Norman R. Carson Award)  
Chairperson:

Ms. Laureen H. Parker  
13030 Silver Creek Drive  
Austin, TX 78727

##### **OUTSTANDING YOUNG EE AWARD COMMITTEE**

Chairman:  
Dr. Robert A. Bartolini  
14 Darvel Drive, Route 4  
Robinsville, NJ 08691

#### **KARAPETOFF EMINENT MEMBERS' AWARD COMMITTEE**

Chairman:  
Mr. Donald Christiansen  
434 West Main Street  
Huntington, NY 11743

#### **OUTSTANDING TEACHING AWARD COMMITTEE**

(C. Holmes MacDonald Award)  
Chairman:  
Mr. Robert F. Arehart  
720 Emerson Street  
Philadelphia, PA 19111

#### **OUTSTANDING CHAPTER ACTIVITIES AWARD COMMITTEE**

Chairman:  
Mr. Alan Lefkow  
17 Jacobs Road  
Thiells, NY 10984

## **Contents**

### **Announcements**

- 3** Paul K. Hudson HKN Development Fund: Annual Giving Campaign

### **Awards**

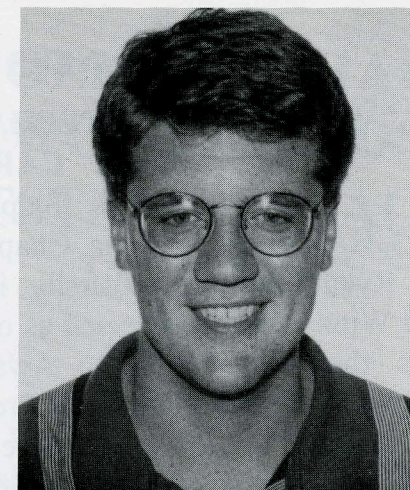
- 4** 1996 Norman R. Carson, Outstanding EE Junior Award
- 6** Outstanding Chapter Activities Awards: Winner, Beta Chapter, and Honorable Mention, Psi Chapter

**Become a Paul K. Hudson Fellow**

**Do it Today!**

**ALSO VISIT HKN's WWW HOME PAGE**

**<http://www.umn.edu/~hknhdqrs>**



# **RYAN J. MATTISON**

**WINS**

**1996**

**NORMAN R. CARSON**

**OUTSTANDING**

**EE JUNIOR AWARD**

**By Laureen K. H. Parker**

### **INTRODUCTION**

**Annual Program.** Each year, Eta Kappa Nu honors a junior in electrical engineering for his or her leadership abilities, scholastic and technical achievements, and service contributions. This award, the Norman R. Carson Outstanding Electrical Engineering Junior Award, was established by Mr. and Mrs. Carson to recognize the student's ability to lead, persuade, and influence the actions of others, as well as to recognize his or her diligence, intelligence and technical competence. The HKN Lone Star Alumni Chapter of Austin, Texas, which administers this award, received many outstanding applications. After careful consideration, one Winner, two Runners-up and four Honorable Mentions were selected.

**Winner:**

Ryan James Mattison, Nu Chapter, Iowa State University.

**Runners-up:**

Stephanie Postal, Sigma Chapter, Carnegie Mellon University; and

Sheila Ross, Beta Omicron Chapter, Marquette University.

**Honorable Mentions:**

Christy C. Agah, Gamma Theta Chapter, University of Missouri-Rolla;

Jeffrey P. Fisher, Embry Riddle Aeronautical University;

Byron J. Roll, South Dakota School of

Mines and Technology; and  
Ted Trask; Polytechnic University.

#### WINNER

**RYAN J. MATTISON, NU CHAPTER, IOWA STATE UNIVERSITY.** Ryan James Mattison, the 1996 Carson Award Winner, has demonstrated that he possesses the wide-ranging leadership and intellectual abilities that Eta Kappa Nu seeks to honor through this award. Mr. Mattison's many honorary activities include a term as vice president of Tau Beta Pi engineering honor society at Iowa State, and treasurer of the Nu Chapter of Eta Kappa Nu. He was also a delegate to the Tau Beta Pi national convention, and a member of numerous other honorary societies.

Mr. Mattison further demonstrated his leadership abilities and dedication to community service by serving as a delegate to the Student Alumni Association national convention, coordinating campus tours at Iowa State, participating in the Appalachia Service Project every year since 1992, and serving as an emergency room volunteer at two Iowa hospitals, just to mention a few of his many activities. He also served as a student representative on Iowa State Electrical Engineering Department Executive Search Committee. In his spare time, he enjoys flying as a licensed private pilot.

His work experience includes a summer spent at the Baylor College of Medicine, in Houston, Texas, where he conducted research in the area of pulmonary medicine. He has also conducted research at Iowa State to develop heart rate variability detection software. After graduation in the spring of 1997, Ryan plans to enter medical school and pursue areas of medicine that include both his clinical and technical interests.

Eta Kappa Nu congratulates Ryan Mattison on being selected as the Norman R. Carson Award Winner for 1996.

#### RUNNERS -UP

**STEPHANIE POSTAL, SIGMA CHAPTER, CARNEGIE MELLON UNIVERSITY.** Stephanie Postal, a member of the Sigma Chapter of HKN at Carnegie Mellon University in Pittsburgh, Pennsylvania, was selected as one of two runners-up for the 1996 Carson Award. In 1996 she served concurrently as President of Tau Beta Pi and Sigma Chapter Treasurer, as well as Captain of the varsity volleyball team, earning three letters.

She has worked for Intel Corporation as a corporate data integration analyst, and is a residence assistant responsible for forty students in a resident hall at Carnegie Mellon. Her community service includes planning and participating in events for children and their families at the Ronald McDonald House in Pittsburgh, and serving as a volunteer for the Pittsburgh Charities for the Hungry. She plans to earn her BS and MS degrees in electrical and computer engineering and then pursue a career in that field.

**SHEILA ROSS, AT BETA OMICRON CHAPTER, MARQUETTE UNIVERSITY.** Sheila Ross is a member of the Beta Omicron Chapter of HKN at Marquette University in Milwaukee, Wisconsin, where her activities and academic accomplishments earned her recognition as a runner-up for the 1996 Carson Award. Ms. Ross has served as an officer in HKN, in Pi Mu Epsilon, the mathematics honor society, and in the IEEE chapter at Marquette. She has given much of her time to tutoring minority students at Marquette, especially in mathematics, chemistry, physics and biology.

As an undergraduate, Ms. Ross has participated in research in signal processing, speech processing and speech intelligibility.

Eta Kappa Nu congratulates the 1996 Carson Award winners for their achievements and wishes them the best in the future.

## SIX COLLEGE CHAPTERS WON AWARDS FOR OUTSTANDING ACTIVITIES IN 1994-95

by Alan Lefkow

All the award programs of Eta Kappa Nu have the common theme of holding service to others as important as scholarship or professional achievement. For college chapters, whose members have already demonstrated their scholarship accomplishments by their original eligibility for Eta Kappa Nu, services to their department, their school, and their community mark an outstanding chapter. For chapters whose program of activities shows outstanding service to others, the Outstanding Chapter Activities Award program provides the recognition to those chapters who have excelled in this area.

For the academic year 1994-95, six chapters of Eta Kappa Nu were judged to have programs of activities that stood above the rest. These chapters received one of three awards: the Certificate of Merit award for meritorious programs, the Honorable Mention award for outstanding programs, or the National Winner award for the most outstanding program. Gamma Mu chapter (Texas A&M University), Iota Gamma chapter (University of California-Los Angeles), and Nu chapter (Iowa State University) received Certificates of Merit for their excellent programs. Beta Epsilon chapter (University of Michigan) and Psi chapter (University of Texas at Austin) received Honorable Mention awards for their outstanding programs. Beta chapter (Purdue University) was voted the National Winner for the most outstanding program in 1994-95.

The award plaques have been presented to these fine chapters. Certificate winners each receive their certificate laminated in walnut with gold trim. Honorable Mention and the National Winner receive metal plaques engraved in color that are mounted on a field of red velvet framed in walnut.

All the awards are noteworthy symbols to mark the chapter's distinction as an outstanding chapter.

In the past, selected winning reports of such fine chapters have appeared in various issues of *Bridge* to serve as encouraging examples. For certain, their activities cover a wide range. Popular activities include helping the poor of their community, service to local high schools, support to many events at their own school, providing scholarships and awards to outstanding students, tutoring programs, Resume books for graduating seniors, providing food at their student lounge, services to alumni (newsletters, record keeping), evaluating courses and providing course guides, key supporters for Engineering Day, and promoting interaction between students and faculty. These are but a few of the activities the winning chapters performed for their school, department, or community.

Outstanding chapters are selected, based on their annual chapter report. Any chapter that sends in an annual report is automatically entered into the competition. Reports arrive at National after the end of the academic year and into early fall. They are judged in the winter, and the winners are announced by spring.

Winning chapters submit reports of distinction that do justice to their programs of activities, as previous reports published in *Bridge* have shown. Desktop publishing and other professional methods on campus have contributed to reports that look as good as the chapters they portray. Such reports require hard work, as do outstanding programs of activity. Two (Winner Beta and Honorable Mention, Psi) of the six winning reports are presented here as encouraging examples.



**Eta Kappa Nu, Beta Chapter  
Purdue University**  
1994-1995 Academic Year



**ETA KAPPA NU  
BETA CHAPTER**



ELECTRICAL ENGINEERING BUILDING PURDUE UNIVERSITY WEST LAFAYETTE, IN 47907

A Letter from the Presidents September 24, 1995

Each year, the Presidents of Beta Chapter from the past fall and spring semesters are responsible for writing, designing, and editing our chapter report. Assembling this report brought back many fond memories of our time as Presidents and made us again appreciate the work of Beta Chapter's membership. Without their efforts we would have little to write about. It is through their work that Beta Chapter succeeds.

The organization of this document follows the style Beta Chapter established several years ago for its annual report. As our predecessors have set high standards for this report, we have done our best to follow in their footsteps.

This report covers Beta Chapter's activities during the 1994-1995 academic year, a year that saw accomplishments and changes within our chapter. In March, Beta Chapter donated \$10,000 to the department to start an endowment for the Eta Kappa Nu Beta Chapter Scholarships. Our report begins with the letter to the department to establish this endowment as we feel it exemplifies the qualities that have made Beta Chapter successful. The organization is proud of this achievement which is a result of the hard work of our membership over the entire eighty-one year history of Beta Chapter. Also, we continued to encourage interaction between students and faculty in non-classroom settings with our "Professor on POD" program in which professors volunteered their time to serve as "Person on Duty" in our lounge. It is our hope that such programs will help build a stronger sense of community within the department.

Our association with Eta Kappa Nu and Beta Chapter has been an important part of our experiences at Purdue. We have had the pleasure of working with many highly talented, highly motivated people who are willing to give some of their time to make EE at Purdue a better department. We are proud to be a part of the history of this organization and have tried to live up to the achievements of our predecessors and provide inspiration for those who follow. We are confident Beta Chapter will continue to strive to succeed.

Submitted on behalf of the members of Beta Chapter,

*Thomas E. Willis*

Thomas E. Willis  
President of Beta Chapter, Fall 1994

*Kenneth M. Gardner*

Kenneth M. Gardner  
President of Beta Chapter, Spring 1995

THE NATIONAL ELECTRICAL ENGINEERING HONOR SOCIETY



**ETA KAPPA NU  
BETA CHAPTER**



ELECTRICAL ENGINEERING BUILDING PURDUE UNIVERSITY WEST LAFAYETTE, IN 47907

March 8, 1995

Professor Richard J. Schwartz  
Head, School of Electrical Engineering  
Purdue University  
West Lafayette, Indiana 47907

Professor Schwartz:

Enclosed is a check for \$10,000 to be used as seed money for an endowment for merit-based scholarships. The active members of Beta Chapter of Eta Kappa Nu have voted to give the money to the School of Electrical Engineering to fund awards to second semester sophomores for their use during their junior year. We would like the selection to be based primarily on academic achievement, with additional consideration of participation in campus and community service organizations, and the student's interests and goals as they relate to electrical engineering.

We hope that additional funds may be added by our alumni and by Beta Chapter and prefer that any interest not allocated to scholarships in a given year be rolled back into the endowment to help it grow.

Sincerely,

*Allan D. Knies*

Allan D. Knies  
Beta Chapter President  
Spring 1994

*Thomas E. Willis*

Thomas E. Willis  
Beta Chapter President  
Fall 1994

*Kenneth M. Gardner*

Kenneth M. Gardner  
Beta Chapter President  
Spring 1995

THE NATIONAL ELECTRICAL ENGINEERING HONOR SOCIETY

**A Brief History of Eta Kappa Nu  
and Beta Chapter**



Eta Kappa Nu is the electrical engineering honorary. It is an international organization with chapters at universities all over the world. Although academic achievement plays a role in qualifying for membership, Eta Kappa Nu stresses the balanced individual by challenging members to excel in areas outside of academics. The membership of Beta Chapter, located at Purdue University, works toward maintaining that balance through the many activities we support. Read on, and learn about our chapter of Eta Kappa Nu.

Eta Kappa Nu was founded at the University of Illinois in 1904 by Professor M. L. Carr. This first chapter was known as Alpha Chapter. Eta Kappa Nu has since grown to over two hundred active college chapters and about twelve alumni chapters.

The second chapter, Beta Chapter, was formed in 1906 at Purdue University at a time when Purdue prohibited fraternal organizations. Shortly after we were founded, President Winston E. Stone heard of our existence and demanded that our chapter be withdrawn. The national organization did so, assuring the Beta Chapter members that they would remain in Eta Kappa Nu as members of Eta Chapter, which is the "Chapter at Large". Throughout this period we continued to hold our meetings in secret. In 1913, when Purdue again recognized fraternities, Professor Rowel, of the Case Applied Science School, now known as Case Western Reserve University, encouraged Beta Chapter to be reorganized.

Early on, Beta Chapter sported one of the largest chapter enrollments. As Beta's active list increased, so did its energy and innovation. By the 1960's Beta Chapter had received room in the EE building to use as a lounge. In the 1970's the lounge began to sell snacks which brought in income that helped increase the number and size of our activities. This increase continued through the 1980's. Beta Chapter activities created many versatile and innovative improvements and projects: ranging from internal changes such as the lounge turned mini-mart, to extra-curricular activities, such as Friday socials and professors as lounge staff.

In the 1990's, Beta Chapter continues to build on its past hard work and excellence as we look for more ways, such as our scholarship endowment, to return something to the department, the profession, and the community. As always, with hard work and dedication things keep getting better.

members, we really do mean *active!* Beta Chapter had sixteen regular actives' meetings during the 1994-1995 school year. Each meeting typically lasted a half-hour, depending on how much business there is to take care of. Active members are required to attend the meetings unless previous commitments cause conflicts.

Though attendance records are kept, an active may be excused for tests, other commitments, or any excuse creative enough to "fool" the recording secretary. Missing two meetings in a row, or a total of three during a semester, results in deactivation. To be reactivated, it is customary to require the offending member to attempt to *entertain* the crowd prior to a restoration vote. It is rarely easy for the member attempting reactivation, because Beta Chapter can be a tough audience! A member is allowed to be reactivated only once.

A typical night of Beta Chapter meetings occurs every other Monday starting with the Exec-Comm meeting at 6:00 pm. New ideas, upcoming events, and chapter business are discussed. Exec-comm can offer valuable insight to the current officers, such as when to start preparing for an event, who to talk to on campus, pitfalls and red tape to watch out for, and reminders not to procrastinate too much.

The Exec-Comm meeting is scheduled to end just before 7:00 and is followed by an industry presentation sponsored by Beta Chapter. These presentations are set up by the Industry Secretary and open to all Purdue electrical engineering students. Free pizza and soft drinks always ensure a large (and captive) audience.

The actives' meeting begins at 8:00 and ends when the business is completed. In this meeting, important issues are brought forth for discussion or a vote. Many issues inspire lengthy and detailed debates, and are subsequently referred to a committee or informal gathering of interested parties. Other issues such as award nominees or new sales or service ideas are brought before the actives for a final decision during the regularly scheduled meeting. The president needs to be on top of the agenda to keep discussions within a reasonable time frame. Once business has been taken care of, the motion to adjourn is made and usually carried before the "all in favor vote" echo has died out, let alone the final swing of the president's gavel.

The first and last actives' meetings of each semester have special formats. The first meeting is used to fill the lounge duty slots, in addition to regular business. No one leaves until all the slots are filled. When it is down to the last few slots, things can get vicious. A slight body movement or eye contact can result in a person volunteering for a slot (or second slot). The last meeting is devoted to officer elections. With nine offices and several people running for each office, it makes for a busy night.

**Committees**

A number of committees exist to assist in the many semestery and daily events that require attention. While many committees are a permanent part of the organization, Beta Chapter creates short-lived committees to handle transient issues. Throughout the semester, active members volunteer to serve on the committees. Each committee selects a chairman who is responsible for organizing meetings,

**An Overview of Beta Chapter**



Beta Chapter is fortunate to continue to find enthusiastic members to keep the organization going. The Purdue EE department also has been very helpful in providing facilities for our chapter's use. This section presents an overview of our membership, how our chapter runs from day-to-day, and the facilities we are responsible for.

**"The Nice Guys" of Beta Chapter**

In 1981 one of our members whose name has been lost in time coined the phrase "The Nice Guys of HKN" to refer to our chapter. Although Beta Chapter has changed over the last decade, this tag has endured. Beta Chapter is comprised of many individuals who each contribute to the success of the chapter.

Beta Chapter has nine continuing committees that provide personpower for the programs and activities that Beta Chapter sponsors. These committees, with the support of our actives, are the driving force and most important part of Beta Chapter. Without the endless energy and devotion of the active membership we could not possibly hope to accomplish all of our goals.

Beta Chapter, like any organizational structure, relies on the leadership qualities of its membership. We do not have a hierarchical chain of command where the orders are dictated from the top down. Instead, the nine elected officers are each in charge of a small part of the big picture and rely heavily on many unnamed co-stars to help out.

As each semester begins and the new officers learn what they have gotten into, they have the ability to draw on the experience and ideas of not only the faculty advisors, but also present and past officers and committee heads. The past and present officers and committee heads form an important advisory group within Beta Chapter called the Executive Committee, or Exec-Comm for short, that provides a forum for exploring issues before they are presented to the membership.

**Active Membership**

During the 1994-1995 school year, we had over 111 active members on the attendance roster. Without the dedication and hard work of the actives, there would be little to talk about in our annual report. When Beta Chapter talks about active

1. To dispel any doubts, "Guys" is used in the inclusive sense - there are many nice gals in Beta Chapter too!

updating the President on activities, and most importantly, making sure that everyone who would like to get involved has the opportunity to do so. A brief summary of each committee's activities is provided below. Detailed information on the specific activities of each committee is provided later in this report.

**Alumni:** Edits and publishes the bi-annual Beta Chapter newsletter. This frequently involves tracking down reluctant officers and forcing them to do something engineers fear above all else: write prose.

**Awards and Scholarships:** Nominates individuals for national and local awards in electrical engineering, as well as administrators and arranges industry, local, and Beta Chapter sponsored awards and scholarships.

**Community Service:** Organizes and runs volunteer and fund-raising activities and handles recycling.

**Homework:** Maintains homework solution files for current classes.

**Honor Code:** Develops an Honor Code proposal for the department. This committee is not permanent and will only exist until the effort becomes department-wide.

**Lab:** Supports and oversees the operation of the student laboratory.

**Laser Printer:** Administers the laser printer available to the general public.

**Resume Book:** Compiles and publishes the electrical engineering student resume book each fall.

**Take-a-Prof-to-Lunch & Professors on POD:** Sponsors informal outings with professors and students to encourage student-faculty interaction.

**World-Wide Web:** Maintains the HKN World-Wide Web homepage.

**Officers & Executive Committee**

The responsibilities of the officers do not end with the specific duties attached to their position. These individuals often devote extra time to committees during overload periods, large activities, and often volunteer for small odd jobs. Balancing school and the demands of office is one of the first, and sometimes one of the hardest, lessons learned. Patience, a willingness to help, and good listening qualities are keys to surviving the semester and doing a great job.

Beta Chapter Officers, 1994-1995		
Office	Fall 1994	Spring 1995
President	Tom Willis	Ken Gardner
Vice President	Marty McKenna	Jen Fleeter
Treasurer	Dan Mowry	Dan Mowry
Recording Secretary	Ken Gardner	Mark Tozer
Pledge Trainer	Rob Dyer	Paul McGary
Workshop Chair	Pat Rensick	Brian Leitner
Lounge Chairs	Matt Frazer & Keir Thelander	Jennifer Frohm & Mitch Theys

## Beta Chapter Officers, 1994-1995

Office	Fall 1994	Spring 1995
Social Chair	Jeff Eschbach	Michele Cox
Industry Chair	Brian Janszewski	William Torke

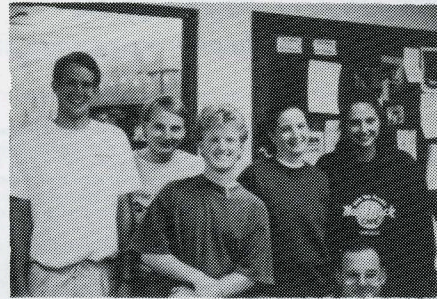
The Executive Committee is an advisory group comprised of past and present committee heads and officers that provides continuity between Beta Chapter administrations. Having access to the experience of past Beta Chapter members is very helpful to new officers and helps to ensure that the transition between administrations is as painless as possible.

Prior to each regular meeting, Exec-Comm meets for an hour to discuss the business of Beta Chapter. The main purpose of this meeting is to attempt to define issues and to find "votable" alternatives that can be presented to the full membership at the actives' meeting. We learned the hard way that an actives' meeting with around seventy-five people is *not* the place to define an issue! Thus, Exec-Comm is often a "fact finding" body that gathers relevant information so the entire membership can make an informed decision on an issue. Such issues can range from the serious, such as deciding to seed an endowment, to the not-quite-so-serious, such as keeping the "presidential throne" in the lounge. Exec-comm meetings are open to any member but only the officers and committee heads are required to attend.

## Fall 1994 Beta Chapter Officers.



## Spring 1995 Beta Chapter Officers



## Faculty Advisors

An indispensable source of leadership and advice comes from Beta Chapter's faculty advisors. Each semester the executive committee meets with the faculty advisors to discuss the current status of the chapter and review future plans. The interaction with the faculty allows our chapter to work in step with our school when planning events, and it also gives us new ideas from a faculty point of view. Their help and support is much appreciated. The 1994-1995 Beta Chapter Faculty Advisors were:

Professor David G. Meyer, head advisor  
 Professor Henry G. Dietz  
 Professor Anthony A. Maciejewski  
 Professor Hannis W. Thompson  
 Professor George R. Wodicka  
 Professor Michael D. Zoltowski

## Facilities

Beta Chapter is fortunate to have extensive support from the School of Electrical Engineering such as the three rooms in the basement of the Electrical Engineering Building we are allowed to use. One of the most popular of these rooms is the site of the EE Student Lounge, often called the HKN Lounge.

The air-conditioned lounge provides a valuable service to students at Purdue. There are comfortable chairs for relaxing and plenty of tables for piling books,

bookshelves full of data books, some of which are rumored to be less than four years old! The closed circuit monitoring system ensures that in the event someone is injured in the lab their body is removed before the end of the day.

In recent years, the lab has become a graveyard for ADM-5 terminals that the computer support staff have found to no longer function. This year we found a use for the terminals in the PESC Engineering Olympics. It turns out that if you put wheels and handles on one of these babies, they really fly. Our "unique" use for ADM-5's is discussed on page 30. In the future, we plan to redirect the lab's use to better support student coursework and to add update the PC's currently available.

All of our facilities are open to the public. Although the lounge is officially only open on weekdays from 7:30 a.m. to 5:30 p.m., it is often brimming with action in the wee hours of the morning as students study away the night. We are proud of the fact that our facilities serve not only Beta Chapter, but also are a widely-used gathering place for the entire EE community.

## A Year in the Life of Beta Chapter



The 1994-1995 academic year was another active one as Beta Chapter members continued to give their time and energy for many projects. We are especially in debt to the committee members whose hard work and personal initiative have made all this possible. To delve into enough detail to do justice to everyone who contributed would require volumes. Therefore, to relieve some of the burden from the former presidents who must compile this report, we limit our discussion to the major events and issues of the past year. In the sections that follow, each office and committee details their achievements during this past year and, in doing so, also describes their functions better than a summary could.

## Officer Activities

The nine officers that make up the core of Beta Chapter's Executive Committee are elected at the end of each semester and hold their position during the following semester. The officers, in conjunction with the committee heads, implement the will of the actives. The next portion of this report provides an overview of what each of Beta Chapter's officers accomplished this past year.

## Industry Secretary

One of the important functions of our chapter is establishing and maintaining a strong working relationship with industry. This relationship has resulted in an ongoing series of technical presentations, seminars, and resume collection sessions co-sponsored by Beta Chapter and many companies throughout the nation.

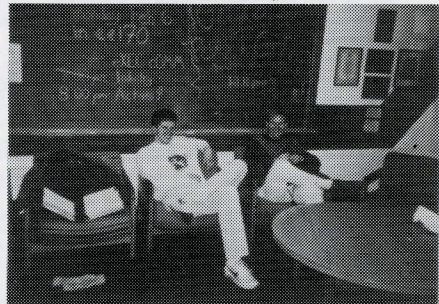
Corporate representatives are invited to present seminars on technical subjects of interest to Purdue's undergraduate and graduate student body. These presentations provide an excellent way for students to relate their course work to real world problems and applications, while at the same time allowing companies to make themselves known to the students. Since these presentations coincide with dinner, companies typically supply free pizza to the attendees and Beta Chapter donates the soft drinks.

## Industry Presentations During the 1994-1995 Academic Year

Date	Company
September 7, 1994	Sprint
September 12, 1994	AT&T

notes, and pizzas. Along one wall is a chalk board that sometimes boasts magnificent drawings courtesy of some of the "lounge rats". It also serves to announce meetings, speakers, committee activities, and any other use a chalk-bearing student might think of. Another wall is devoted to the awards Beta Chapter has received for community service and other competitions. We take great pride in these accomplishments.

Beta Chapter "Old Folks" Eric Evans and Allan Knies Relax in the Lounge Before an Exec-Comm Meeting



There is a bulletin board next to the entrance of the lounge for Beta Chapter notices, pictures of officers, volunteer sign-up lists, junk mail of interest to the students, and many other pieces of paper too "important" to throw out. An over-used photocopier is jammed into another corner. Nearby is a mini-library of literature collected from graduate schools, magazines about career opportunities, and "propaganda" from companies that come to campus trying to recruit poor, unwary engineering graduates.

Adjacent to the student lounge is what once was a workshop full of instruments, parts, and other stuff that any aspiring engineer could waste hours of time fiddling with. Today it serves as an informal place to buy reasonably priced soda pop, coffee, junk food, and some not-so-junk food. The latest addition to the lounge is a new Coke cooler used to hold the bottled juices and fruit drinks Beta Chapter sells.

1. A term of endearment for those who appear to live in the lounge.  
 2. We would be lying if we denied that Beta Chapter could be considered the caffeine and sugar supplier for the students, faculty, and staff in EE.

## The "New" Coke Cooler



In addition to the food, there are also public computer terminals and office supplies for students to finish off that project or last-minute homework. Other amenities such as running water, school newspapers, a campus phone, paper clips, brooms, and helpful, intelligent, soon-to-be engineers are available for public (ab)use or assistance, as the case may be.

A fine<sup>1</sup> sound system is installed in the lounge which sometimes leads to "communication" among the students about the radio station or CD selection. One of our prized possessions, is our laser printer which can be reached from any of the machines in EE. Like the department, we sell printer pages to students at a modest fee to cover the cost of operating the printer. Our printer remains a popular choice with students because we sell pages in any amount, no matter how small the order. Finally, the lounge serves as a meeting place for committees, storage of Beta Chapter records, and Beta Chapter office space.

The third room delegated for our use is the student lab. It has become a popular site to both work on assigned laboratory experiments and to engage in independent research. There are workbenches which house equipment along with

1. Ok, ok, so it is a hand-me-down from an long-since-graduated member...

## Industry Presentations During the 1994-1995 Academic Year

Date	Company
September 15, 1994	Hewlett Packard
September 19, 1994	Intel Corporation
October 17, 1994	Delco Electronics
October 31, 1994	Motorola
January 23, 1995	Motorola
February 20, 1995	Lutron Electronics
February 27, 1995	Symbios Logic
March 27, 1995	Delco Electronics
April 3, 1995	Intel Corporation

Generally, presentations last an hour and are held before each regular actives' meeting. The Industry Secretary is responsible for scheduling the industry presentations for the following semester. During the semester, the industry secretary arranges for equipment a speaker may need, orders the pizzas for the meeting, arranges help to move cases of soda to the location of the talk, and greets the visiting speaker. Every once in a while, a company will cancel, which sometimes leads to impromptu presentation such as a showing of "Monty Python's Holy Grail".

This year, we had a few weeks where *more* than one presentation was given. Typically this "problem" occurs during Purdue's Industrial Roundtable when many companies are on campus to recruit and like to use the industry presentation to talk to prospective employees. For this reason, we had several companies give presentations on off-meeting weeks or early in the meeting week. The industry secretary works hard to make sure that the presentations come off without a hitch and that the following semester's schedule is prepared for the next semester.

## FunStuff Secretary

Along with a dedication to service and responsibility, Beta Chapter takes its recreation seriously, and sponsors numerous social events for students and faculty throughout the year. Managing a myriad of social functions is the responsibility of the Social Chairperson, or "FunStuff Secretary" as the post is affectionately known, who makes sure the students have ample opportunities to break away from the rigors of working through Purdue's Electrical Engineering program. In addition to providing much needed outlets to relax, the FunStuff chair works to encourage interaction between the faculty and students outside of the classroom.

Every three weeks or so the chapter holds "Thank God It's Friday" parties, commonly known as "TG's", that are open to all Electrical Engineering students, friends, and faculty. These gatherings usually these take place at a local pizza place, or at some trusting faculty member's home and sometimes involve a theme. Beta Chapter traditionally helps foot the bill for the food and encourages support of the current theme. This year, Beta Chapter organized nine TG's. One of the

most successful of which was the "Nerd TG" held in the Fall. This TG gave the EE students in the department a chance to show off their fashion sense.

Several Beta Chapter Members Exhibit their "Keen" Fashion Sense at the "Nerd TG"



In addition to the nine TG's this past year, Beta Chapter helps EE students stay in top physical condition by participating in intramural sports and organizing sports competitions. This past year saw Beta offering a popular WallyBall tournament whose prizes were "LoungeBucks" that could be spent in the lounge, a trip to a local howling alley, fielding teams in both the spring and fall university intramural softball leagues, and a trip to Indianapolis to watch a Pacer's basketball game for armchair athletes.

We also continued to co-sponsor a picnic with Purdue's chapter of The Association for Computing Machinery, a computer science professional society. Each semester, ACM and Beta Chapter get together for an afternoon of softball, volleyball, socializing and barbecued burgers and hot dogs. This past year, our picnics gained nationwide exposure when Dave Barry published a column on Purdue's own George Gobel who, in a quest to start the grill for our picnics as soon as we arrive at the park, began to ignite the grill using liquid oxygen. The sight of a grill being lit in this fashion can only be described as "impressive". We are proud to say that George has used Beta Chapter picnics in the years past as a proving ground for his grill-lighting techniques which began, innocently enough, with the use of a vacuum cleaner a few years ago.

Finally, Beta Chapter closed out the year with a get together at a local micro-brewery to thank the professors who participated in the "Take-a-Prof-to-Lunch" and "Profs on POD" programs (see "Take-a-Prof-to-Lunch & Professors on POD

1. This being the understatement of this annual report.

Committee" on page 27 for more information) and an after-the-banquet party at Professor Dietz' house.

John Halter, a Beta Chapter Active, Awaits his Turn to Bat at the Fall ACM-HKN Picnic



### Lounge Secretary

Beta Chapter has been generously loaned two rooms in the Electrical Engineering building which comprise the "HKN Lounge". These rooms are the responsibility of Beta Chapter. To manage this resource the executive position of Secretary of the Lounge was created.

To understand the position of the Lounge Secretary, one must understand what the lounge is. In one room, Beta Chapter provides relaxing chairs for tired students while an adjoining room contains cabinets, snacks, and beverages. The lounge is also part of the student communication network. Bulletin boards and chalk boards exist within the lounge for volunteer lists and both Beta Chapter and general notices. In addition, the chalk boards sometimes find themselves filled with the scribble of someone's homework in the making. Over the years, the lounge has developed into a study room as well as a social center.

One of the important functions of the lounge is to provide snack items to Purdue students and staff. Many students are in the habit of visiting the lounge before or after class. A variety of snacks are sold at reasonable prices in the lounge such as soda, bottled juices, chips, granola bars, brownies, Hostess snacks, and of course, coffee.

1. Snacks and beverages are collectively referred to as "Product" within the organization. Do not ask us why, we just work here.
2. The staff often becomes feisty when they can not find their coffee or Caffeine-Free Diet Coke.

Over the years, Coca-Cola products in 16 oz. returnable bottles became a trademark of the HKN Lounge. To the horror and dismay of Spring President Ken Gardner, Coca-Cola stopped making 16 oz. returnable bottles, choosing instead to go to a 20 oz. non-returnable plastic bottle. For the past few years, the Coca-Cola company has been warning us that they intended to replace the glass coke bottles with plastic. Presidents crossed their fingers and hoped that they would not go down in Beta Chapter history as the "President who Lost the Coke". The luck finally ran out this past year as Coke moved to plastic bottles. A certain sadness briefly ensued as the lounge witnessed the end of an era.

Popular items in the lounge include doughnuts and bagels that are delivered every morning<sup>1</sup> to cater to the students and faculty who need breakfast on the run. To accompany the changing interests of the lounge patrons, several new items have been added to the lounge menu including more bottled juices, Hostess products, and Tic-Tacs. Because the Lounge Secretary selects which items will be sold in the lounge, each semester our product line is a little different. More information on the lounge can be found in "Appendix D: The HKN Lounge" on page 47.

The Lounge Secretary has several responsibilities, the first of which is managing the resources of the lounge. Simply stated, the Lounge Secretary must make sure all of the snacks are available. Two common jobs performed by the lounge secretary include placing orders and picking up "product". Due to the amount of work this position entails, this past year Beta Chapter elected Lounge Co-Secretaries both semesters.

Maintaining order in the lounge requires actives and pledges spend upwards of 100 person-hours per week cleaning, organizing, stocking, and staffing. To sell items in the lounge, Beta Chapter has someone, known as a "Person on Duty" or POD, at the money box each hour the lounge is open. Another part of the Lounge Secretary's position is organizing the staffing times to make sure each hour is filled. Beta Chapter members work one (and sometimes two and even three!) hour-long slots each week.

The Lounge Secretary is also in charge of overseeing the pledges who take part in the traditional lounge clean up day. This endeavor leaves no stone unturned as every inch is swept, scrubbed, scoured, or steam cleaned. Finally, in conjunction with the Community Service Committee, the Lounge Secretary makes sure we recycle as much as possible. In the lounge, we have recycling bins for glass juice bottles, newspapers, and aluminum cans.

All in all, the lounge provides a special place for all EE students and others who wander through the building. To some it is a home away from the dorms or a study place for group projects as is evidenced by the large number of people that can be found in the lounge late into the night.

1. To this day great debate rages in Beta Chapter about who actually lost the Coke. While Ken was President at the time, he had not yet received the gavel from Tom and thus, according to some, was not "officially" president at the time Coke switched. Ken and Tom both adamantly declare it was "Not my fault!"
2. Truth is stranger than fiction #616: The doughnuts are delivered each morning to the campus police station!

### Members Initiated Fall 1994

Brian Rosenkoetter	Yan Alexander Li	Eric Stuckey
Brian H. Kwon	Mike Erickson	Ufuk Ayse Agar
Min Tan	Amil Kabil	Jason Renschler
Yat Chow Cheng	Don Commons	Shui Ping Mei
Sumit Vakil	Nabil Mouchawar	Brian Leitner
Aamer Hydrie	Jeff Krillenberger	Jarett Dobbins
Paul M. Koenig	Preetpaul Devgan	Thomas L. Horwedel
Ming Yeung Cheung	Eric Stone	Chun-Tak Fan
Steven P. Keller	Michael Uohara	Song Lin
Tracy Gossett	Bradley Orris	Michele Cox
Saravanan Mallesan	Pradeep Sen	Andres Haralson
Allan Koivo	Qing-Xiao Ni	

### Members Initiated Spring 1995

Shahab Baqai	Matt Blair	Larry Burns
Alan Burstein	Antai Cen	Ritwik Chatterjee
Enhshing Chen	Alicia Edelman	Jeremy Farrer
Paul Frantz	Daniel Hannoun	Tanveer Hq
Evalyn Henderson	Mike Mattix	Brian Mears
Heather Newlin	Julie O'Grady	Sunhom Paak
Rob Pohlmann	R. Ramabhadran	Jim Robertson
Ankit Shah	Rich Shericik	Srinivas Sista
Marie Therese Smith	John John So	Michael Stevens
Rajesh Subramanyan	Pete Thoeming	Manu Thomas
Charles Tse	Greg Tuel	Peining Wang
Mark Willey	Ray Zhao	

### Recording Secretary

The Recording Secretary is in charge of recording the minutes of the meeting, reading the old minutes, and keeping attendance. A less official, secondary mission of this position is to devise an entertaining way to start the actives' meeting. In previous semesters, this has included Top 10<sup>1</sup> list or a clever and sometimes slightly peculiar way to read the minutes that usually manages to poke some friendly fun at one of the officers or former officers.

1. When the Recording Secretary has writer's block or a big test, these often become "Top 8" or "Top 6" lists.

Unfortunately for Beta Chapter, but the University accounting guidelines are not sufficient for an organization that sells tens of thousands of dollars in soda pop and snacks every year. To solve this problem, we set up our own accounting system that is a super set of the university's system to internally track income and expenses and provide the university with their requested accounting data. It can be frustrating at times dealing with the red tape, but the software lightens the check balancing load that used to accompany this position. A list of prices in the lounge from last year are given in "Appendix D: The HKN Lounge" on page 47.

### Vice President

Formally, the primary function of the Vice President is to preside over meetings which the President is not able to attend. For the first time in recent memory, the Vice President had to fulfill this portion of his duties this past fall while the President was at a conference. The main bulk of the VP's work is to coordinate the end of the semester awards and initiation banquet. Planning the banquet takes several weeks and includes many small details that must be attended to early in the semester to make sure everything goes well.

The fall banquet was held at Howard Johnson Plaza Hotel and the spring event at the Radisson Hotel in Lafayette (the banquet programs can be found in Appendices B and C on page 39 and page 43, respectively). Student and faculty attendance at both banquets was fantastic. New HKN initiates and EE faculty are admitted free of charge, but actives and their guests and family members were charged a modest \$5 fee to help offset the cost of the banquet. The dinners served at both banquets made the cost of the banquet tickets quite a bargain.

After the dinner portion of the banquets came the awards and entertainment. The first order of business at both banquets was the recognition of graduating Beta Chapter members with the presentation of their graduation paddles. The paddles are paid for with some of the members' initial membership fees and are ordered by the VP. In the Fall, the paddles were presented by Beta Chapter advisor and Assistant Department Head, Professor Hannis Thompson. In the Spring, Department Head Professor Richard Schwartz did the honors.

Following the recognition of the new initiates by the Pledge Trainer, the President and Head Advisor both address the banquet attendees. Dr. Dave's speeches at both banquets covered future directions within the department while Tom and Ken summarized the accomplishments of the past semester. Traditionally, the President is required to prepare their speech on a napkin during dinner which makes for interesting talks.

To introduce a bit of humor into the proceedings, entertainment is arranged by the Vice President. Some highlights from the 1994-1995 banquets included the pledge skits which used a mock actives' meeting and a visit to "Grandma HKN" to poke fun at the officers. Also well-received was a slide show that followed Barney<sup>1</sup> through the pledge process. Finally, Jo Gelfand who helps handle the department's

1. Or rather, Ken Gardner in a Barney suit.

There is a lot of electronic mail and computer time associated with this office. Attendance for each meeting must be entered into the attendance program and notices of absences sent out. The minutes are entered on the system, and sent via electronic mail to the officers, executive committee members, faculty, and many alumni who want to keep up with the goings on in Beta Chapter. In addition, the minutes of each meeting are posted on a bulletin board in the HKN Lounge and in the local purdue. e.cn. hkn USENET newsgroup.

Some of the highlights from the entertainment provided by this year's recording secretaries include: the "Top 10 Things You Probably Did Not Know About Being an HKN Officer" and the "Top 9 Spring Break Activities for EE's". Also, a slide show in which Ken Gardner dresses up in a Barney suit and explores the experiences of Barney as an HKN pledge, and a video in which Mark Tozer wanders around campus asking passers by to read off items from a Top 10 list proved to be among the entertainment highlights of the year. The entertainment helps get the meeting off to a flying start and encourages people to show up on time as you never know what the recording secretary is going to do next. A little fun amongst fellow members is just another part of the personality that makes up Beta Chapter's unique culture.

### Treasurer

The job of the Treasurer sounds simple: deposit the money and write checks. Expand that into reality, and that amounts to counting and depositing over \$1,000 in small bills per week - no small task in itself. Add to that the checks that must be written to pay bills and reimburse members, and you have a busy person.

To meet the accounting guidelines every last penny is categorized. Since we are a student organization at Purdue, we enjoy the benefit of supervision by the Business Office of Student Organizations, BOSO<sup>1</sup>. They must countersign every check, after being convinced it needs to be written. Each check is categorized and accompanied by a receipt. All in all, the BOSO check-approval entails a lot of receipt tracking and verification.

Depositing the money from the lounge and other sales is the next big task. Sometimes Arnold<sup>2</sup> is needed to carry the hundred pounds of change generated weekly to the bank. BOSO may seem like a dark evil that only gets in the way, but their overview and guidance can be very beneficial in reassuring Beta Chapter's financial status. BOSO helped determine that we were regularly taking in less money than we should which prompted the chapter to buy a safe for the lounge. We found after the first full year of use that we had been losing more money than any of the officers first thought. This increased security has allowed Beta Chapter to improve its financial situation considerably over the past year and is one of the primary factors contributing to our decision to start the Beta Chapter Endowment (see "Appendix A: The Beta Chapter Scholarship Endowment" on page 35).

1. Which, as any Beta Chapter officer will tell you, is sometimes an all-too-appropriate acronym!
2. As in Schwartzeneiger, not the pig.

### Workshop Secretary

The Workshop Secretary is responsible for the well-being of the equipment in the lounge and the lab. Looking at the size of Beta Chapter, it may seem like a lot of work, but it is not too bad as long as everything does not break at the same time! The Workshop Secretary ensures that the refrigerators in the lounge for the soda and juices, copier, laser printer, and the terminals are all in working order. Finally, the Workshop Secretary keeps manages the distribution of keys for the lounge and lab which can be quite a mess when the new officers are elected. Tradition has it that the night of elections is when the new officer's term begins, so the newly-elected Workshop Secretary must sort through his new responsibilities and respond to everyone's cries for keys. Election week can be very hectic!

There is, however, one time in the semester that the Workshop Secretary is happy and feels secure in knowing that there is peace and order in the universe. This is when the pledges are starting their pledge projects. This gives the Workshop Secretary the chance to pass some of the repair jobs onto some one else.

The Workshop Secretary works closely with committees within Beta Chapter and the departmental maintenance staff. He (or she) is a permanent member of the Lab Committee and Laser Committee, as these committees are responsible for maintaining Beta Chapter facilities. The contacts developed with maintenance staff and the building supervisor are very important to us. We do our best to work with Purdue and to take care of the facilities they generously allow us to use.

This year, the Fall Workshop Secretary, Pat Rennick, also had the task of finding a "Frob" that would prevent coffee grounds from getting into the coffee in the lounge's coffee maker. After much thought, intense discussions with officers, and two failed prototypes, a suitable Frob was found at a local department store.

### Pledge Trainer

The Pledge Trainer is responsible for recruiting and training outstanding students in Electrical Engineering for membership in Eta Kappa Nu in general, and in Beta Chapter in particular. This year, our Pledge Trainers were responsible for the training of 35 pledges in both the Fall and Spring. Beta Chapter has been fortunate to continue to find motivated people to pledge our organization which helps to ensure that the chapter will continue to excel as it has done in the past.

The first task of the Pledge Trainer is to obtain a list of the eligible students from the authorities-that-be at Purdue including the dreaded Business Office for Student Organizations. Obtaining the list early in the semester takes a combination of promptness, sweet talking, and luck. Everyone who meets the academic qualifications is invited to attend the pledge social. At this meeting, we serve refreshments and introduce the chapter to the prospective initiates. The officers, advisors, and active members all participate in telling the candidates what HKN and Beta

1. Which George Gobel, resident coolant expert, provides immense amounts of personal time to help us with.
2. An in-depth discussion of the Frob can be found in the Fall 1994 Newsletter reprinted in "Appendix E: The Fall 1994 Alumni Newsletter" on page 49.

Chapter are all about. The president shows the candidates an introductory slide show. Names are collected, and interested students are asked to attend three additional pledge meetings that provide the pledge with an orientation of Beta Chapter.

At the first Pledge Meeting, the prospective members are given handouts about Eta Kappa Nu and Beta Chapter and introduced to the pledge process they must complete before being inducted into Beta Chapter. To be inducted, each candidate must complete a service project, pledge board, attend a social function and industry presentation, serve a one-hour lounge duty with an active member, and complete two grueling quizzes about Eta Kappa Nu and Beta Chapter.

The pledge projects provide Beta Chapter another avenue to help the community. During the first part of the semester, the Pledge Trainer contacts the other officers and committees to find enough pledge projects to keep the candidates busy. These service projects undertaken by the pledges require only a few hours of their time and serve to help the community or Beta Chapter.

Projects this year included the once-a-semester-whether-it-needs-it-or-not lounge cleaning, helping in the construction of houses with the Purdue chapter of Habitat for Humanity, recording audio tapes for the hearing-impaired in the Purdue ALPS lab, cleaning the brass HKN Bridge outside of the Electrical Engineering building, interviewing professors for a "Meet the Faculty" bulletin board in the EE building, sorting and organizing parts in Beta Chapter's Student lab, lending a hand to the Community Service Committee, helping out at the local humane society, building a Beta Chapter banner<sup>1</sup>, and many other useful tasks.

Another task which must be completed by our pledges is the procurement of signatures for the pledge boards. Undergraduate pledges are expected to create a precisely laid out signature sheet according to written instructions. The signatures of EE professors, officers, actives, and committee chairs need to be collected prior to initiation. This is a good way for the new pledges to meet actives of Beta Chapter and to establish a rapport with the EE faculty. Pledges are also required to serve one-hour lounge duty with an active, attend a committee meeting and an industry presentation to introduce them to the "normal" aspects of being a member.

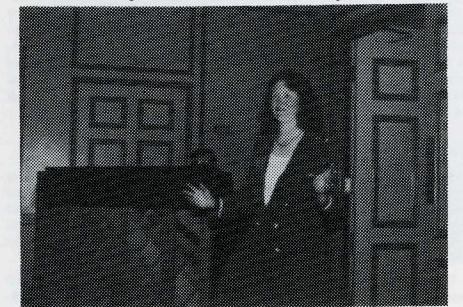
After all this training, the pledges are rewarded with an initiation ceremony followed by the end-of-the-semester awards and initiation banquet. Active members attend the initiation to help welcome the new members. Each pledge is provided with a ticket to the banquet that follows, and guests are always welcome. The week after the banquet, the new members attend their first actives' meeting during which Beta Chapter elects its officers for the next semester. It is very encouraging to see new members running for an office the same semester they join! This was the case during both semesters this year. With involvement like this, Beta Chapter can continue to succeed.

The members of Beta Chapter, on the recommendation of the Pledge Trainers, were pleased to welcome the following new members during 1994-1995:

1. A project necessitated when the previous semester's pledges accidentally threw out the old banner during a lounge cleaning. Our old banner was "cleverly" concealed in an old PVC pipe the pledges thought was junk.

industry relations, sang an improvised song to all gathered. As it turns out, Jo was unaware that she was part of the entertainment until we wheeled a piano player in and asked her to sing. Jo was a great sport throughout this practical joke put together by the Vice President which turned out to be one of the highlights of the Fall banquet. With entertainment complete the semester's awards were presented.

Jo Gelfand Serenades the Fall 1994 Banquet



During the spring banquet, the *Outstanding Teaching Award* was presented to Professor Mary Harper and the *Outstanding Electrical Engineering Senior Award* was given to Jeffrey Eschbach. A list of other award recipients can be found in "Awards and Scholarship Committee" on page 24. Also, former Presidents Allan Knies and Krish Bandaru were awarded the *Ron Harber Chapter Service Award* for outstanding service to Beta Chapter in the spring. This award is presented to actives of Beta Chapter who have given extraordinary service to the chapter and to the community during the semester in which the recipient plans to graduate.

### President

The main jobs of the President are to provide direction for Beta Chapter and to run the Actives' Meetings. The goal of the Actives' Meetings is to take care of pressing business in a prompt and orderly fashion. To keep the meeting length reasonable, the items of the agenda are first discussed at an Executive Committee meeting before being presented to the actives. Although not a requirement for the job, being able to "think on your feet" is a useful skill for a president to have as entertaining or amusing material is great for calming the actives down.

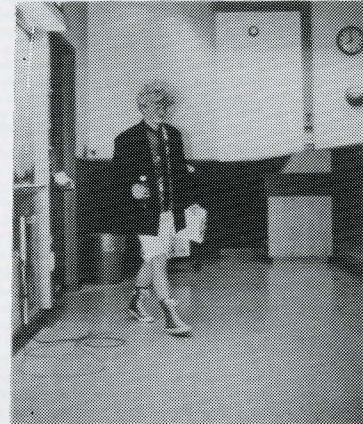
An example of how the President directs the organization can be found in the development of the Beta Chapter Endowment. What began as discussions on what

to do with lounge proceeds in the Spring of 1994 eventually turned into a vote to seed an endowment in the Spring of 1995. Without continuity and direction in the three different Beta Chapter administrations that presided while the idea was being developed, the endowment would have never come to life. For more information on the endowment, the reader is directed to "Appendix A: The Beta Chapter Scholarship Endowment" on page 35.

The President also represents the organization and sometimes the EE student body at different functions, which includes things from freshman information sessions to the Electrical Engineering Department's Outstanding Electrical Engineer banquet. Also, this year the President was asked to make some brief remarks on behalf of EE students at a ceremony thanking Intel Corporation for their generous donation of equipment for two undergraduate digital electronics laboratories. Many other small jobs fall into the President's job description because they just have to be done. The best thing about being President is being "in charge" of a group of talented and motivated individuals who do not need to have some one in charge.

Although not an official function of the position, Presidents are often the butt of jokes because they tend to know many of the people in the chapter and frequently have the greatest opportunity to look stupid while performing executive functions. For example, when an incoming president tries to obtain the "Official" Beta Chapter gavel from the out-going president. By tradition, the incoming president must pass a trial developed by the outgoing president. In years past, this trial has involved singing, dressing silly, and collecting clues to the gavel's whereabouts from our advisors.

Ken Gardner Fulfills his Final Task Prior to Receiving the Beta Chapter Gavel



Finally, the President is expected to write the annual report you find yourself reading right now. Although Beta Chapter's presidents tend to have an over-inflated sense of importance (probably arising from the constant ribbing they take at meetings), we should mention that many times the President simply "rides herd" over the officers and let them take the lead.

### Committee Activities

Committees are the organizational lifeblood of Beta Chapter that provide opportunities for more than just the nine elected officers to be involved in the organization. There are numerous activities that the chapter would like to maintain every semester but electing an officer for each would be impossible, and thus, committees exist. Most committees are ongoing, but some, such as the Honor Code Committee, are created to handle special projects. The beauty of Beta Chapter's system is that the committees take care of themselves. The chairs communicate to the President and the actives about the help they need, scheduling of meetings, and programs they sponsor. In the following paragraphs are brief over-

views of the projects that take hundreds of man hours and the work of many Beta Chapter actives to complete.

### Alumni Committee

We at Beta Chapter depend on strong contacts with alumni. The Alumni Committee continued to keep our alumni informed of Beta chapter's many projects, by publishing bi-annual newsletters to keep interested graduates up to date with chapter and department news. This year's newsletters were funded through Beta Chapter's own account and were written using Microsoft Word which makes it easier for new committee members to sit down and start producing a very professional looking newsletter. Included at the end of this report in "Appendix E: The Fall 1994 Alumni Newsletter" on page 49 is a copy of our latest alumni newsletter.

### Awards and Scholarship Committee

Beta Chapter is able to assist a number of deserving undergraduate and graduate students through its scholarship program. The Awards and Scholarship Committee is responsible for screening eligible applicants and nominating them for national and local scholarships and awards. The committee secures the support of several corporate sponsors, and then assists the sponsoring companies with selecting the winners.

This year's scholarships were made possible by the generosity of General Motors Delco Electronics, Hughes Aircraft Company, and General Electric Medical Systems. In addition, the committee also administers Beta Chapter awards such as the *Elias Sabbagh Outstanding Senior Award*, the *Outstanding Senior in Electrical Engineering*, the *Outstanding Junior in Electrical Engineering*, the *Outstanding Teaching Award*.

**Hughes Aircraft and GE Medical Systems Scholarships:** These awards were not given during 1994-1995. However, we expect that Hughes and GE will fund the scholarships in the future.

**GM/Delco Electronics Scholarship:** Awarded to an outstanding EE Junior or Senior. The 1994-1995 recipient was Heather Newlin.

**Elias Sabbagh Award:** A cash award established by the family of Dr. Elias Sabbagh, a former professor of the School of Electrical Engineering, for outstanding scholarship and extra-curricular activities. The 1994-1995 recipient was Lori Nottingham.

**Outstanding Electrical Engineering Senior Award:** An annual award to a student receiving their undergraduate degree from Purdue that spring, the following summer, or following fall. The 1994-1995 recipient was Jeffrey Eschbach.

**Outstanding Electrical Engineering Junior Award:** An annual award to an outstanding Junior Electrical Engineer. The 1994-1995 recipient was Heather Newlin.

**Outstanding Teaching Award:** Awarded to a faculty member whom the members of Beta Chapter believe to have achieved a level of excellence beyond what is expected. The 1994-1995 recipient was Mary Harper.

In the future, the Awards and Scholarships Committee will also be charged with advertising and collecting applications for the scholarships awarded from the Beta Chapter Endowment (see "Appendix A: The Beta Chapter Scholarship Endowment" on page 35). We look forward to our first award within a few years.

### Community Service Committee

Our Community Service committee works on several projects that extend our impact beyond the campus borders to help try to make Lafayette a better place to live. In addition to the annual Thanksgiving Food Drive, Soup Kitchen Day, and the continuous collection of aluminum cans and glass bottles, we added several "one-time" events. Of course, the main thrust of this committee comes from the enormous energy and interest of the actives themselves!

Once again, with contributions of time and money from the students, staff, and faculty, Beta Chapter held its annual Thanksgiving food drive and Soup Kitchen Day. In conjunction with the Salvation Army chapter of Lafayette, we purchased, assembled, and distributed Thanksgiving food baskets to forty Lafayette-area families. More than twenty members helped with the food drive. During the spring semester, our chapter donated a day's proceeds from the lounge to St. Anne's Soup Kitchen. This organization, located at a local church, provides hot meals to the hungry of Lafayette. This year's donation totaled \$470.

This year Beta Chapter also donated money and time to the Wabash Center, a local charity for the handicapped, to repair some of their broken electronic equipment. This even allowed Beta Chapter to provide assistance in an area we know a great deal about - electronics. The President also represented the chapter at a discussion with the Lafayette United Way about ways in which the Electrical Engineering Department can utilize its students to provide assistance, such as administration of computer systems or programming, to local charities. Purdue faculty continue to pursue this endeavor and just recently began a for-credit class in the department called "Engineering Projects In Community Service" or EPICS for short. Although not a driving force in developing EPICS, some Beta Chapter members participated in the projects upon which EPICS is modeled.

During the pledge process, HKN participated in several community service events. One of the most popular was working with Habitat for Humanity in building homes. Almost half of the pledges during fall semester participated in this activity! Other pledges and actives helped raise money for local people in need of food by participating in the Lafayette area "Hunger Hike".

Beta Chapter currently provides collection bins for aluminum cans and glass bottles throughout the HKN student lounge. The aluminum cans and bottles are taken to a local recycling center as soon as the total number sitting in storage reaches critical mass. Expanding the program is currently under discussion and may involve a joint effort with the Purdue Student Government.

Beta Chapter maintains a collection of graduate composites of EE students. These large photos, chronicling the graduating classes from 1894 to the present, are very popular on Homecoming weekend, when alumni stop by to see how funny their hair looked "back then". Alongside the composites are our "Meet the Professor" boards. Interviews and photos of new professors are posted every semester to introduce them to the student body. We also updated a faculty photo board, with small photos of every professor in the department.

### Homework Committee

One very popular service to both professors and students is done by the Homework Committee. The Homework Committee keeps a collection of three-ring binders, one for each participating EE class, that contain solutions to homework assignments. The solutions are provided by the professors, and are kept in the lounge in a convenient location. Judging by the condition of the solutions at the end of the semester, this seems to be a very popular attraction to the students. Last year we again replaced all the binders which seem to be taking a lot of abuse recently.

### Honor Code Committee

This marks the second year the honor code has been a committee in Beta Chapter. After developing a statement of academic honesty and taking the time to discuss the issue with the actives and several faculty members in the department, the committee was invited to give a presentation to the Electrical Engineering's Curriculum Committee which is formed primarily of faculty members. After a warm reception from the committee, Dr. Schwartz, the head of Electrical Engineering, presented the honor code document at a meeting of the heads of each engineering school here at Purdue.

The university took almost a semester to look the document over before telling the honor code committee to press on! Toward the end of the 1994-1995 academic year, the committee made presentations in several of the undergraduate seminars to find interested parties outside of Beta Chapter. With growing involvement from all students in Electrical Engineering, the committee met with the Dean of Students to let their office know what Electrical Engineering was up to.

This fall, the committee is looking to implement the first portion of its plan which involves discussion groups in the undergraduate seminar. The committee expects to make strides in implementing and defining their goals in the coming year which should make for an interesting annual report next year! It is clear from the reception by the administration that the other engineering departments will be watching what Electrical Engineering does. In addition, this committee is one of the few committees in Beta Chapter which draws on non-HKN members. As the problem of academic honesty affects all Electrical Engineering students, the decision was made early in the life of the committee to include all interested Electrical

1. On a bookshelf, beside the HKN copier should you ever find yourself in the lounge looking for EE 362 solutions.

tunity to meet faculty and to get a flavor of some of the current areas of interest within the department. This was a chance for both faculty and students to talk on a one-to-one basis and proved to be a great success. What was enjoyed the most was the informal interaction and discussions ranging from academics to politics! The professors who participated during the Fall of 1994 were:

Professor and Department Head Richard Schwartz  
Professor John Nyenhuis

In addition to the lunches, we also tried a new program to increase faculty-student interaction: Professor on POD.

During the Spring semester Krish Bandaru came up with the idea of asking professors and staff members to volunteer an hour whenever they could to serve as the person on duty, or POD, in the HKN Lounge. You can imagine the surprise on student's faces when none other than our department head, Dr. Schwartz, is the one making change! This program proved to be a great success and we plan to continue and expand it in the future. The professors and staff who participated during the Spring of 1995 were:

Professor and Department Head Richard Schwartz  
Professor and Assistant Department Head Hannis Thompson  
Professor George Wodicka  
Professor Seth Abraham  
Professor Dave Meyer  
Professor Anthony Maciejewski  
Jo Gelfand

Our thanks go to both of these groups of faculty and staff for helping Beta Chapter foster student-faculty interaction.

Engineers. Judging from the response, our efforts have tapped a source of great frustration within the department which perhaps can be put to good use.

### Lab Committee

Beta Chapter's student lab is yet another popular attraction. This lab is the only one open to students who are either interested in working on projects outside of class, or creating personal ones. The lab is fully equipped with a variety of donated parts, equipment and an IBM computer. The donated parts include everything imaginable from capacitors to microprocessors and are free to those in need. Head Advisor Dave Meyer has helped keep the lab up to date with some of the undergraduate lab courses by donating extra equipment that is used in several digital lab courses.

### Laser Printer Committee

The Laser Committee is in charge of maintaining the accounts for using the laser printer located in the lounge. The laser printer, named ea2, is a public access PostScript Apple LaserWriter. Originally ea2 was one of the only laser printers available for undergraduate use on the Engineering Computer Network (ECN) and is still the only printer which you can purchase any number of pages on. Most public-use engineering printers require that a block of 200 pages be purchased. Also, our printer is among the finest in the department, and is often used by professors seeking high quality.

### Resume Book Committee

One of Beta Chapter's most important projects for the Purdue Electrical Engineering student body is the publication of the annual Electrical Engineering Resume Book. The members of this committee are responsible for all aspects of the book's publication, including publicity, printing, shipping, and maintaining the software that is used to format the resume book. The book is open to all students in the School of Electrical Engineering and is made available to companies to aid in their recruiting process. Resumes are submitted by running a custom program installed on the Engineering Computer Network and maintained by some of our actives and alumni. Last year, 270 undergraduate and graduate students entered a resume in the book. More than 75 companies received the official Beta Chapter resume book through the Purdue Electrical Engineering Industrial Institute or at a cost of \$40 per book. In the future, Beta Chapter is developing a World-Wide Web interface for the resume program so that students can submit resumes from a web browser.

### Take-a-Prof-to-Lunch & Professors on POD Committee

The Take A Prof To Lunch Committee coordinates several activities in an attempt to facilitate a greater level of communication between students, faculty, and the staff in the School of Electrical Engineering. The lunches at local restaurants or empty classrooms in the Electrical Engineering Building gave students the oppor-

Dr. Thompson on POD



### World-Wide Web Committee

One of the latest committees to be added to Beta Chapter's committee menagerie is a committee to support a World-Wide Web home page for Beta Chapter. This committee was the result of one of the co-chair's creativity and insight into the potential of delivering information on this medium.

The 1994-1995 academic year marked the first academic year the Beta Chapter web pages were in use after a summer of crack development work by the web committee (who just happened to be stuck at Purdue that summer). Our web server runs on [tempst.ecn.purdue.edu](http://tempst.ecn.purdue.edu), an IBM RS/6000 generously donated by Professor Dietz from his pool of research machines. The URL to locate the index of the Beta Chapter web pages is: <http://tempst.ecn.purdue.edu:8001/HKN/index.html>. From where you can jump to any location within the Beta Chapter web. Beta Chapter currently features a variety of services, ranging from potentially useful information to pure entertainment.

One of the most popular areas include the "Virtual Lounge Tour," where browsers can click their way through a guided tour of our student lounge, including color pictures and sounds. Web users from as far away as Germany and Switzerland have taken the tour. In addition, sections of the tour offer information on the history of the Electrical Engineering Building and the eclectic collection of things hanging from the ceiling of the lounge.

Also included is an excellent section featuring the "Interactive Shield." By clicking on different sections of the HKN shield, users can read descriptions of

what each component signifies. Another contribution is "Doing Research on the Internet," containing a collection of hyperlinks to other pages related to a general electrical engineering topic. Instead of searching the Web themselves, users can access our page and quickly find sites dedicated to topics like optics, computer engineering, solid-state, and signal processing.

The web pages also carries information about the current officers and committee heads, including electronic mail addresses contact information and sometimes even pictures. In addition to information on the officers of Beta Chapter, the web has proven to be a great place to announce upcoming social events and post pictures from past social events. Occasionally, the web committee runs a contest to allow readers to caption some of the more "interesting" pictures taken at an event.

Finally, work began on a web-based version of the resume program (see "Resume Book Committee" on page 27) to allow students to enter their resume for the resume book over the web. Although the web interface was developed over the course of the year, we can report that this year the interface is up and running, but we will leave a discussion of that to next year's annual report.

### PESC Engineering Olympics

Although not through the work of an established committee, Beta Chapter did sponsor an event this past year in the Purdue Engineering Student Council's Engineering Olympics. PESC approached each engineering society at Purdue and asked if they would run an event in the Olympics. Each event would be visited in turn by teams of engineers competing for prizes. Beta Chapter's event, "Terminal Velocity", was pulled off with the enthusiastic work of a group of actives.

The group attempted to settle on an event that would not only be fun, but also be uniquely Beta Chapter. After considering many good ideas such as calculator relays and basketball shooting contests, one of our members noticed several non-functional ADM-5 terminals laying around the lounge and came up with the idea of putting wheels on them so they could be used in some sort of "race". Although older than many in our membership, the ADM-5 terminal forms the backbone of Beta Chapter's "computing" resources and is well-known feature of our lounge!

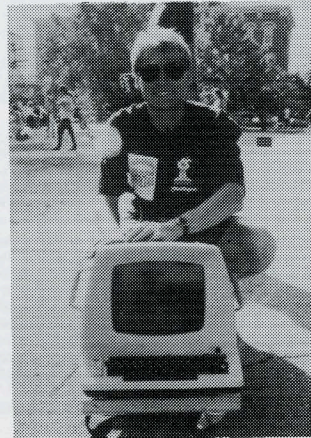
Eventually, the format of our event was determined: a member of a team would ride on the terminal (which had been customized with space-age handles and a no-slip surface to sit on) while being pushed from behind by a second team member who was blind-folded. Only through the direction of the rider could the pusher move the terminal through an obstacle course made up of items from our lounge, such as the wooden boxes that once bore returnable bottles of Coke from the Coke truck to the HKN Lounge. Teams were scored based on how long their run through the course required. Early road tests of the customized ADM-5 by Beta Chapter test drivers indicated it was quite the ride. We look forward to participating in further olympics.

1. Indeed, old terminals that break down mysteriously appear in the lounge rather than being thrown out.
2. A moment of silence for the passing of the returnable bottles is in order here.

A Contestant in the PESC Engineering Olympics Achieves "Terminal Velocity"

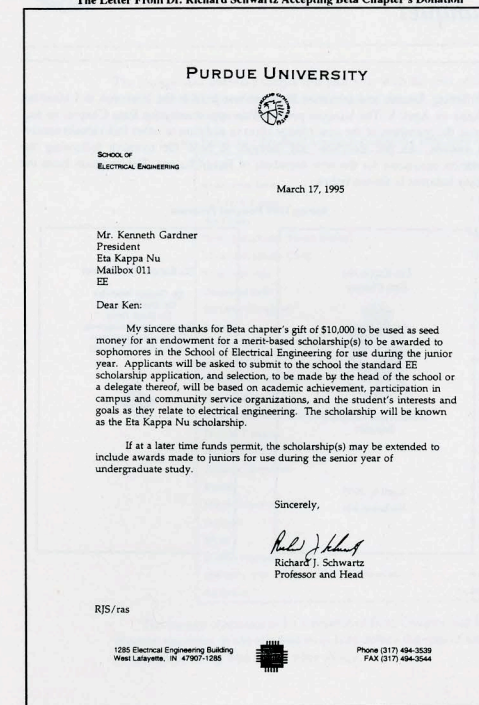


Allan Knies, a Beta Chapter Active, Shows off the "Customized" ADM-5 Terminal



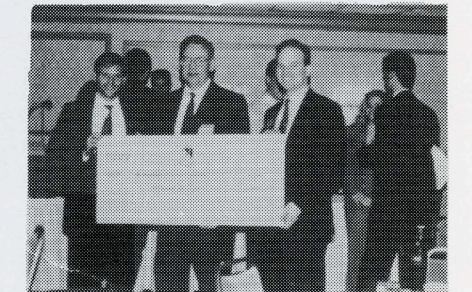
Chapter's goals for the endowment. Later that month, Dr. Schwartz thanked Beta Chapter for its donation in a letter to Ken Gardner.

### The Letter From Dr. Richard Schwartz Accepting Beta Chapter's Donation



Three semesters after the issue was first addressed in Exec-Comm, the Beta Chapter Endowment was publicly announced at the Spring Banquet with the presentation to Dr. Schwartz of a check for Beta Chapter's donation. This ceremony would have never occurred had it not been for the work of Beta Chapter membership, past and present.

Allan Knies, Dr. Richard Schwartz, and Tom Willis (l-r) at the Presentation of the Check for the Beta Chapter Endowment During the Spring Banquet



In setting up this endowment, Beta Chapter has several well-defined goals in mind. We want to use our money in a way that would outlast the finite lifetimes of physical gifts such as lab equipment. We want to provide a means for our gift to grow so it can reach more people as time goes on. We want to use the gift to encourage the qualities that Eta Kappa Nu stands for: academic excellence and service to others. And finally, we want to help attract outstanding students to our department.

To ensure that the endowment grows and has the potential to impact more and more students as time goes by, we have elected to award scholarships from the interest earned on the principle with any unused money being returned to the endowment to help it grow. Beta Chapter itself is committed to making further donations as our financial situation allows. Also, we are in the process of contacting Beta Chapter Alumni to ask them to contribute to the endowment.

We have great hopes for this endowment; a gift which Beta Chapter membership, past and present, can take great pride in being associated with. It is certainly one of Beta Chapter's greatest contributions. We sincerely hope that in the not-too-distant future, we may return to Purdue as Alumni and find that the endowment has grown beyond our wildest dreams.

## Looking Forward



It would be easy for Beta Chapter to sit back and enjoy its past successes but we feel that Beta Chapter can continue to grow only by constantly looking forward. By continuing our financial strength, Beta Chapter can do new and better things for our classmates, the engineering faculty, and the community. Although Beta Chapter is a non-profit organization, to provide and improve our services to the electrical engineering community here at Purdue requires that Beta Chapter remain financially strong. The endowment provides an excellent example of how we can find new ways to invest our earnings back into the department.

Items such as the new array of beverages and other lounge additions allow for student productivity and stress relief, while physical and monetary donations helps our community function more easily. Through the work of many members of Beta Chapter, we were able to donate seed money for an endowment to provide scholarships to outstanding students. Beta Chapter is extremely proud of this legacy that we leave to the department and we consider it an honor to be in a position that allows us to make a lasting impact on our department. Without the financial strength of the organization, many of these functions would not be possible.

As in the past, Beta Chapter continues to strive for more interaction between the faculty and students. To help make this a reality, Beta Chapter officers and actives have taken the time to personally approach faculty and staff to invite them to our functions. We have noticed that this personal approach has improved the faculty turnout greatly at our functions. We feel that it is important for students to know their professors not only as someone who spends three hours a week lecturing them about some aspect of Electrical Engineering, but also as people. We will continue to try to find new ways, such as "Professors on POD", to provide both the students and faculty opportunities to interact outside the classroom.

We have seen an increase in faculty participation and interest in our organization and we hope to continue to play an important role in serving the needs of students in the School of Electrical Engineering. The time and work that Beta Chapter requires is all worth it when we remember how much fun, learning, and friendship we experienced. We are confident that future members will continue to make Beta Chapter something of which to be proud.

## Appendix A: The Beta Chapter Scholarship Endowment



During an extensive audit of Beta Chapter in the Fall of 1994, the business office at Purdue found that the chapter, while not posting significant losses, was not taking in as much as it should be. This event prompted Beta Chapter to install a safe in the lounge in an attempt to increase security. By the end of the following semester it became apparent that a significant amount of money had been disappearing from the lounge prior to the installation of the safe!

In the Spring of 1994 it became apparent to Exec-Comm that if trends continued we would end up earning significantly more money from the lounge than was needed to run the organization. Because the chapter is non-profit, the officers decided that Beta Chapter should attempt to find a way to return the new-found profits to the students and department. This realization started a discussion of how to best use the money that would span three sets of officers.

During the Fall of 1994 Beta Chapter's bank account had been steadily growing for nearly a year. At this point, Exec-Comm decided that we were not seeing a "transient" effect and that, yes, we really were making more money than was needed. Exec-Comm began looking in earnest for ways to return our profits to the student body and department. It was clear that we had very little flexibility to reduce our profits by cutting prices in the lounge as we are not allowed to compete with the university. Other options would have to be considered. Of the ideas discussed, some serious and some tongue-in-cheek, two stood out: a scholarship, and new equipment for the lab.

Late in the Fall of 1994, Beta Chapter met with Dr. Richard Schwartz to discuss the options for offering scholarships. It was at this time that Dr. Schwartz suggested that Beta Chapter consider seeding an endowment to be used for scholarships. The various options were presented to the membership at the end of the fall semester and debated at several subsequent meetings. In the spring, the actives agreed in principle to the creation of an endowment and asked Exec-Comm to further refine the idea. After deciding that the chapter could donate \$10,000 without endangering our financial situation, Exec-Comm developed potential selection criteria for the scholarships from the endowment. The membership decided that the scholarships would be awarded to Sophomores based on academic achievement and service to the campus and community.

On March 8, 1995 the endowment was officially presented to the department with the letter shown in the introduction to this report. This letter outlined Beta

1. We wish we could say that this was not a problem of theft, but there appears to be no other explanation.

## Appendix B: The 1994 Fall Banquet



The Fall Awards and Initiation Banquet was held at the Howard Johnson Plaza-Hotel in Lafayette, Indiana on November 19. The banquet provided an opportunity for Beta Chapter to recognize the members of the new pledge class in addition to other individuals receiving awards. As per tradition, the banquet is held the evening following the initiation ceremony for the new members of Beta Chapter.

### Fall 1994 Banquet Program

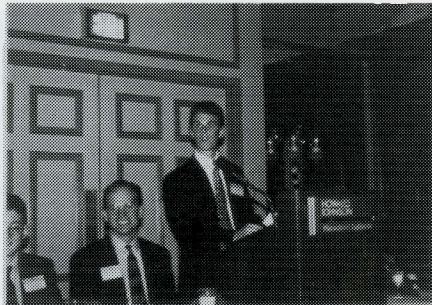
<p>Eta Kappa Nu Beta Chapter</p> <p>Awards and Initiation Banquet</p> <p>November 19, 1994 Howard Johnson Plaza-Hotel</p>	<p>Eta Kappa Nu Advisors</p> <p>Dr. George Wodicka Dr. David Meyer Dr. Hank Dietz Dr. Anthony Maciejowski Dr. Hannis Thompson Dr. Michael Zoltowski</p> <p>Greeters</p> <p>Jon Halter Mark Tozer Janahan Vivekanandan</p>
---	---

<p><b>Officers</b></p> <p>President: Thomas Willis Vice President: Martin McKenna Treasurer: Daniel Mowry Recording Secretary: Kenneth Gardner Pledge Trainer: Robert Dyer Lounge Co-Chairs: Kier Thelander, Matthew Frazer Workshop Chair: Patrick Rennich Industry Chair: Paul McGary Funstuff Chair: Jeff Eschbach, Jennifer Fleeter</p>	<p><b>Program</b></p> <p>Vice President's Welcome: Martin McKenna Dinner Packaging of Graduates: Dr. Hannis Thompson Recognition of Initiates: Robert Dyer President's Address: Thomas Willis Head Advice's Address: Dr. David Meyer Recognition of Officers: Thomas Willis Recognition of Committee Chrs: Martin McKenna Presentation of Lounge Awards: Matthew Frazer</p>
<p><b>Menu</b></p> <p>Sirloin of Roast Beef Boneless Breast of Chicken Shrimp Creole with Rice Baked Potato Broccoli with parmesan sauce Snap Peas with Julienne Carrots</p> <p>Assorted Salads and Fruit Deviled Eggs</p> <p>Assorted Pies Fudge Layer Cake Carrot Cake Ice Cream Coffee, Tea, and Milk Cash Bar</p> <p><i>Eta Kappa Nu urges everyone not to drink and drive. Rules are available on request.</i></p>	<p><b>Initiates</b></p> <p>Saravanan Mallan Brian Rosenkötter Yan Alexander Li Eric Stuckey Brian H. Kwon Mike Erickson Ufak Ayse Agar Min Tan Amil Kahlil Jason Renschler Yat Chow Cheng Don Commons Shui Ping Mei Sumit Vakil Nabil Mouschawar Brian Letimer Asmer Hydrie Qing-Xiao Ni</p> <p>Jeff Killenberger Jared Dobbins Paul M. Koenig Preetpaul Devgan Thomas L. Horwede Ming Young Cheng Chun-Tak Fan Steven P. Keller Michael Uohara Song Lin Tacy Gossett Bradley Oris Michele Cox Eric Stone Pradeep Sen Andres Haraldson Allan Koivo</p>

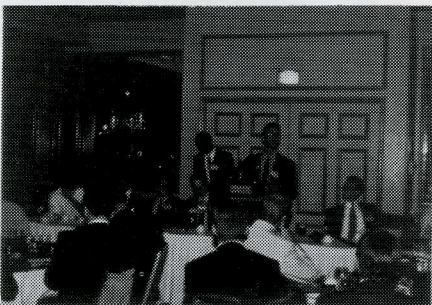


The banquet went well and was enjoyed by the Beta Chapter actives, their guests and the EE faculty in attendance. Entertainment included a slide show of the Recording Secretary running around campus in a Barney suit, an impromptu song by Jo Gelfand who helps the department with industrial relations, and a skit by the new initiates.

"Who's on First?"



A Scene from the New Initiate's Fall Skit



### Appendix C: The 1995 Spring Banquet



The Spring Awards and Initiation Banquet was held at the Radisson in Lafayette, Indiana on April 8. The banquet provided an opportunity for Beta Chapter to recognize the members of the new pledge class in addition to other individuals receiving awards. As per tradition, the banquet is held the evening following the initiation ceremony for the new members of Beta Chapter. The program from the Spring banquet is shown below:

Spring 1995 Banquet Program

Eta Kappa Nu Beta Chapter   Awards and Initiation Banquet  April 8, 1995 Radisson Inn	Eta Kappa Nu Advisors Dr. George Wodicka Dr. David Meyer Dr. Hank Dietz Dr. Anthony Maciejowski Dr. Hannis Thompson Dr. Michael Zoltowski  
---	---

### Appendix D: The HKN Lounge



The lounge saw several changes this past year with the loss of the returnable Coke bottles and the expansion of the bottled juices we sell. A list of the prices for the year is shown in the table below.

Lounge Prices for "Product" Available During the 1994-1995 Academic Year

Item	Price
16 oz. Fruit Juice	0.70
11.5 oz. V-8 Juice	0.75
Hot Drinks	0.25
20 oz. Soft Drinks (Plastic Bottles)	0.70
12 oz. Soft Drinks (Cans)	0.50
Styrofoam cups	0.05
Cinnamon Rolls	0.30
All Other Doughnuts	0.25
Bagels	0.35
Cream Cheese	0.10
Butter or Jelly	0.05
Brownies and Cookies	0.35
Chips (All Varieties)	0.35
Granola Bars (All Varieties)	0.35
Peanuts, Crackers	0.35
Nutty, Swiss Rolls	0.35
Oatmeal Creme Pies	0.20
Raisins	0.30
M&M (Peanut and Plain)	0.50
Popcorn	0.40
Mints	0.05
Hostess Products	0.35
200 MHz of SCSI VRAM With PCI Interface	Free!
All Others	As Marked

The lounge continues to be a symbol of Beta Chapter and helps fund all of our chapter activities. It has allowed us to help defray the cost of social events, provide scholarships along with many other things.

The Last of the 16 oz. Returnable Bottles Now on Display in the Beta Chapter "Museum"

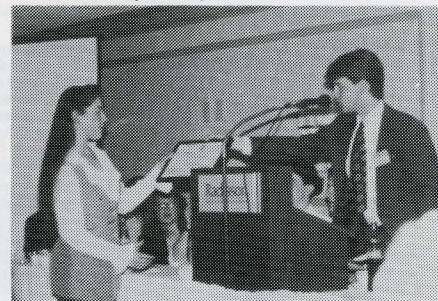


Officers	Program
President: Kenneth Gardner	Vice President's Welcome: Jennifer Fleeter
Vice President: Jennifer Fleeter	Dinner
Treasurer: Daniel Mowry	Packling of Graduates: Dr. Richard Schwartz
Recording Secretary: Mark Tozer	Recognition of Initiates: Paul McGary
Pledge Trainer: Paul McGary	President's Address: Kenneth Gardner
Lounge Co-Chairs: Jennifer Frohm, Mitch Theys	Head Advisors' Address: Dr. David Meyer
Workshop Chair: Brian Leitner	Recognition of Officers: Kenneth Gardner
Industry Chair: William Torke	Recognition of Committee Chair: Jennifer Fleeter
Funstuff Chair: Michelle Cox	Presentation of Lounge Awards: Jennifer Frohm

Menu	Initiates
Sirloin of Roast Beef	Shahab Baqai
Turkey and Dressing	Matt Blair
Baked Cod	Rob Pohlmann
Mashed Potatoes	Larry Burns
Buttered Corn	Alan Burstein
California Blend Vegetables	Jim Robertson
Assorted Salads and Fruit	Antai Cen
Devised Eggs	Ritik Chatterjee
Assorted Pigs	Enhsing Chen
Fudge Layer Cake	Srinivas Sista
Carrot Cake	Alicia Edelman
Coffee, Tea, and Milk	Jenny Farrer
Cash Bar	John John So
<i>Eta Kappa Nu serves everyone and to drink and drive. Rules are available on request.</i>	Paul Frantz
	Daniel Hanoun
	Tarveer Hq
	Evalyn Henderson
	Mike Mantz
	Brian Meas
	Heather Newlin
	Julie O'Grady
	Sunhom Paak
	Rajesh Subramanyam
	Pete Thoeming
	Manu Thomas
	Charles The
	Greg Tuel
	Peining Wang
	Mark Willey
	Ray Zhao

Highlights of the spring banquet included the presentation of the endowment check to Dr. Schwartz, the presentation of many awards, the revelation that the officers had actually hoarded some Coke in returnable bottles just for the occasion, and several entertaining skits by the actives and new initiates.

Dr. Schwartz Prepares to Congratulate a Soon-to-be Beta Chapter Alum



Heather Newlin Receives the "Outstanding Junior Award" from Awards & Scholarships Committee Chair Keith Mahoney



### Appendix E: The Fall 1994 Alumni Newsletter



As we write this report, the Spring 1995 Alumni Newsletter is being put together by members of the Alumni Newsletter Committee. This appendix presents the newsletter sent to interested Beta Chapter alumni to bring them up to date on Beta Chapter's activities during the fall semester of 1994.

## THE NEW DÖRK TIMES

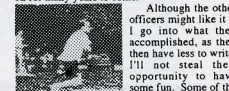
Timely coverage of Fall 1994. *"In Twillis We Trust"* Another fine publication of Beta Chapter, Purdue University.

### PRESIDENT TWILLIS ACQUITTED AND COMMITTED, HEADS FOR RETIREMENT

Once again another semester draws to a close and the current president begins to contemplate life after HKN. The banquet is a pleasant memory, forms are filled out to request a room in the Beta Chapter Old Folks Home, many letters are written to BOSO (the business office) to ask for reimbursement for the ulcers they caused, and memories of trying to figure out how to get all the officers to go the same way at the same time begin to slowly fade. As is tradition, I had to go to the lounge to have the task of letting you, the HKN alumni, know that HKN had its "best semester yet". So I'll get it out of the way now: Beta Chapter had its best semester yet. There.



Unfortunately, this probably won't pass muster with the newsletter chair who is, even as I write this, devising devious means to make me write more. So, in the time-honored tradition of CNN Headline News (or maybe Ricki Lake), here is the 30 second view of what we did this semester. The semester began with a joint picnic with Purdue's ACM chapter. The HKNers did M. L. Carr proud by thrashing the ACM softball team 19-6. A good time was had by all who attended, and not only featured said softball thrashing, but also liquid O<sub>2</sub> grill melting by ECN's George Goble.



Over the summer, HKN's rest stop on the amazing World Wide Web, <http://hemphst.ecn.purdue.edu/800/>, was put together by the intrepid members of the newly-formed World Wide Web committee. If you have access to a WWW browser, I'd suggest taking a look at it. They did a great job. HKN continued to work on an honor code developed last spring as a means to raise awareness and help reduce academic dishonesty within the department. The honor code endorsed by the actives of HKN was presented to the curriculum committee who passed it along to the full EE faculty. Currently, we are in a holding pattern as the department looks into some of the ramifications of the code. Finally, HKN has begun to consider the idea of endowing some scholarships for the department as a means to put a large portion of our substantial balance to good use. Although nothing has been finalized at this point, we feel this may be a great opportunity for Beta Chapter to give something to the department that will go on for many years to come.

Although the other officers might like it if I go into what they accomplished, as they then have less to write, I'll not steal their opportunity to have some fun. Some of the other highlights that you will find more information on elsewhere in the newsletter include the lounge, which did great business this semester, the banquet, which not only provided great food but wonderful entertainment, and the Thanksgiving food drive, which helped many of the needy families in the area. And there are probably others which I have neglected to mention due to my impending old folksness.

Before I wander off into the sunset and the senile haze that is HKN Old Folkdom, I would like to thank all the officers and committee heads for their time and commitment to the organization. I worked with a wonderful group of people who made my job orders of magnitude easier. They all deserve a hearty round of applause. **Tom Willis, President**

**FUNSTUFF COMMITTEE REPORTS LOW ATTENDANCE AT LAPLACE-THEMED TG: "SHOULD'VE DONE FOURIER!"**

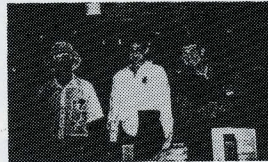
Funstuff this semester was tackled by two people—Jeff Eschbach and Jen Fleeter. We started the semester with a very successful picnic at Happy Hollow Park. We served hamburgers, hotdogs, chips, and the usual assortment of munchies. We also managed to destroy a small grill, with the help of some liquid oxygen and GHG. And of course, the EEs defeated the CS people in a fun game of softball.

We also continued with the tried-and-true Funstuff TGs. We held one per month to provide a place for EEs to get some cheap food

and have a good time. One of our TGs went back to the old concept of a theme TG. We decided to dress as nerds for the theme, and the best nerd received a free meal. However, little difference was noted between how people were dressed at the TG and how they looked normally.

Finally we had a wallyball tournament that was quite successful. We had 16 teams of 4/5 participants. They were broken into 4 groups of 4 teams, and each team played all other teams within their groups. The group winners then played each other to determine the champion. Winners received \$10 each in "lounge bucks". 2nd place received \$5 and third received \$2. Lounge currency was printed up for use next semester by the winners.

♣ Jeff Eschbach, Funstuff Co-chair



**NEED SOMEONE TO MOW THE LAWN? CHECK THE EE RESUME BOOK**

The annual Electrical Engineering Resume Book of the Beta Chapter of Eta Kappa Nu was published again last fall. The 1994/1995 Resume Book contains approximately 160 resumes of students looking for permanent or summer work.

This year's effort was marked by the migration of the resume software to the Solaris operating system by Ron Harber and by the retirement of Keith Mahoney as committee chairman. Keith has been succeeded by Janahan Vivekanandan and Jon Halter. In addition, work on connecting the resume software to the World Wide Web is ongoing. The Resume Committee thanks Ron Harber and Keith Mahoney for their continued assistance.

To date, we have sold 64 resume books and we are still taking and filling orders. The book can be purchased for \$40, with electronic copies available. If you or your company have any questions or wish to order a resume book, please contact us by phone at (317) 494-3522 or by electronic mail at [resume@eece.purdue.edu](mailto:resume@eece.purdue.edu), or write to the address at right. ♣ Jonathan P. Halter, Resume Co-chair

Eta Kappa Nu Resume Book  
Purdue University  
1285 Electrical Engineering, Room 24  
West Lafayette, IN 47907-1285

**THE FROB SAGA: A TALE OF HEARTBREAK, WOE, AND COFFEE GROUNDS**

"The duty of the workshop chairman is to maintain and upgrade the HKN facilities." -from the HKN Officer Duties, Workshop Chairman.

True to this duty, the semester was dominated by upgrading the Bunn-O-Matic™ coffee maker with a device to keep coffee grounds out of the coffee during brewing even if the coffee grounds are improperly placed in the coffee maker. This device is affectionately known as the "Frob". This task seems simple enough at first, but one soon finds out, after consulting with a Bunn-O-Matic™ specialist, that this device does not actually exist. "Never did, never will," were the exact words of the specialist. (There is actually a Bunn-O-Matic™ specialist residing in Lafayette! And I saw him in person!)

And thus began the Frob Design Project, an odyssey that was both celebrated and cursed. The first Frob prototype was constructed from a discarded coat hanger. The design was actually suggested by Gimmy, a sanitation engineer of the EE building. The coat hanger was fashioned into a ring that matched the diameter of the coffee filter. After the filter was loaded with coffee grounds, the ring was compressed and then placed just inside the top edge of the filter. The ring was then decompressed and would theoretically hold the top edge of the coffee filter against the outer edge of the coffee bin thingy. As we all know, practice does not often follow theory. So this design was discarded.

The next design was constructed of small diameter tubing believed to be made of brass. The design consisted of four legs joined at the top. This was similar to a very small table except without the table surface. Anyway, this design was intended to hold up the sides of the coffee filter hence preventing any unwanted coffee grounds from escaping into the freshly brewed coffee. This design actually enjoyed a few weeks of successful use, but as luck would have it, the metallic material that the Frob was constructed of began to corrode. Well, this just would not do, so this design was discarded as well.

A short while later, a trip to K-Mart produced a metallic colander believed to be made of stainless steel. This colander fit beautifully inside the coffee bin thingy, and it was believed that our Frob problems had ended. Well, it turns out that the wire mesh that the colander was constructed of is not easily cleaned, and becomes dirty and gross rather quickly. Certain HKN elders deemed this to be inappropriate and demanded that something be done. "Something" they demanded, "must be done." The mesh was subsequently removed, and it was discovered that the remaining metal frame could be used as a perfectly suitable Frob (the left illustration). This discovery was actually made by the future HKN president, Ken Gardner (the right illustration).

However, it was soon learned that the new-found Frob was not made of stainless steel and it too began to corrode. So yet another Frob design bit the dust. After a long, hard semester of intensive Frob research, the entire project was completely abandoned. It was decided to just make sure that the coffee grounds are deposited into the Bunn-O-Matic™ coffee maker in the proper way, so as to avoid coffee grounds from entering the freshly brewed coffee during the brewing process. ♣ Pat Rennick, Workshop Chair

**EDITOR'S NOTES**

If you would like to update your address, add a fellow HKN alumni to the mailing list, or be removed from the mailing list, please send a short note to the return address on the outside of this newsletter. Alternatively, you can send email to [hkn@eece.purdue.edu](mailto:hkn@eece.purdue.edu), with "Attn: Alumni Committee" in the subject line.

**A Letter From The President**

Greetings from the Psi chapter of HKN at The University of Texas at Austin! This Bridge report details our activities of the 1994-1995 school year. We are proud to be a part of a national organization that promotes the values for which the Eta Kappa Nu Association stands. This Bridge report documents how we try to align ourselves with the goals of HKN through our society's activities.

This chapter of HKN provides a warm home for many electrical engineers while attending The University of Texas at Austin. The society fosters friendships and provides leadership and interpersonal skills that supplement our education in electrical engineering in an important way. If I had to single out one aspect of the Psi chapter that I found most important, it is that I have met a very solid group of people with whom to study, work, and have fun. These are the reasons I joined HKN, and they are the reasons I have stayed active. I think my experiences are mirrored in our officers and most of our active members. Though the rigors of labs and programming courses limit the time many members have to dedicate to extracurricular activities, we are fortunate to have a core group of dedicated members who make our chapter strong and productive.

As we begin the 1995-1996 year, we plan to focus and develop the goals of the chapter. We keyed in on three ways to work with our membership:

- Provide service to our community, school, and society
- Participate in social activities among ourselves, with faculty, with corporations, and with the other EE and engineering societies
- Offer leadership positions to members to complement their technical skills

We especially want to develop two areas of the organization. First, we want to increase our relations with industry. Secondly, we want to bring more graduate students into the organization. Most importantly, we wish to continue the principles of Eta Kappa Nu which make the Psi chapter a worthwhile, exciting, and active organization with which to participate.

None of these goals would be possible without the hard work of our officers, advisors, and activities. On behalf of last year's presidents, I thank all the people that made HKN Psi successful. I also express my excitement that the foundations they formed will make this coming year a very exciting year for HKN at The University of Texas at Austin.

Sincerely,

*Brian Rea*

Brian Rea  
President, Fall 1995

P.S. HKN-Psi thanks Debra Hentz of Hewlett Packard for the donation of the DeskJet 1200C/PS color inkjet printer used to publish this report! HP donated the printer to us this September and it will be a useful asset to our society and its members.

*Eta Kappa Nu  
Psi Chapter*

*The University of Texas at Austin*

*Bridge Report  
1994-1995*

**FALL BANQUET FAILS TO DELIVER GRADUATE STUDENT MUD WRESTLING MATCHES, SETTLES FOR KARAOKE DUELS**

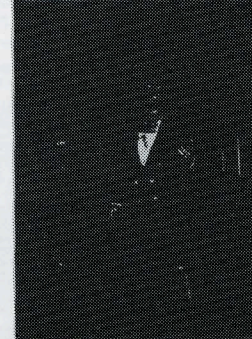
HKN's Fall Banquet and Awards Spectacular was held at Howard Johnson's Hour Time this last semester. For the many people who turned out despite traffic from the Indiana-Purdue football game, the banquet was a very entertaining evening.

The meal was served in the usual banquet style, but the entertainment was anything but usual. The entertainment was kicked off by a parody of the pledge experience as seen by the new initiates. The finale of this skit was a jig to the tunes of Hour Time's piano player Gary Brannon.

This then gave way to an outstanding ad-lib vocal performance put on by Electrical Engineering's Head of Industrial Relations, Jo Gelfand. She led the group in a rousing rendition of her original, "Marty, Don't You Step Through the Front Office Door."

HKN was then blessed with a guest appearance by the always popular Barney the Dinosaur. Our current president, Ken Gardner, probed the ever burning question "What exactly can a purple dinosaur get away with on campus." These slides will be forever preserved in the HKN historical vault. All in all, the banquet provided its usual amount of stress relief for everyone involved.

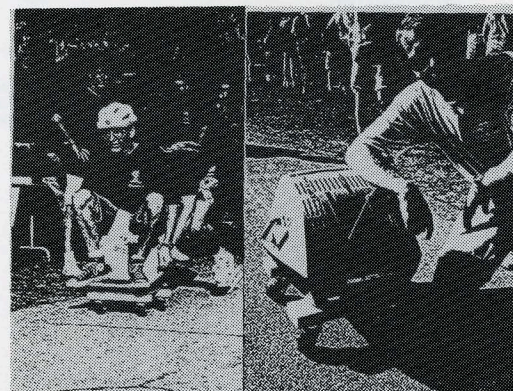
♣ Marty McKenna, Vice-President



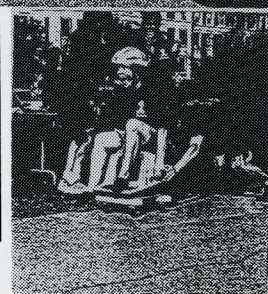
(above) Jo Gelfand amazed the audience at the Fall Banquet and Award Spectacular with her singing ability, inventiveness, and tonsils.



(left) Mighty Morphin' Power Ken assumes his alter-ego, Barney, in preparation for appearances throughout the EE building. To guarantee his safety, body guards were always present.



This fall, PESC sponsored the first annual Engineering Olympics with the help of Allied-Signal. Beta Chapter unleashed on an unsuspecting world the event Terminal Velocity. Yes, that is an ADMS on wheels. Yes, people are riding it. No, there weren't any serious injuries. Blindfolded pushers added to the excitement as teams completed three timed laps around a small triangular course.



The ADMS was customized with heavy-duty casters, sturdy handles, and strategically placed sandpaper. It now resides in the lounge historical museum.

**Table of Contents**

<b>I. Introduction</b> .....	1
<b>II. Membership</b> .....	2
A. Officers and Advisors .....	2
B. New Initiates .....	3
C. Most Outstanding Members .....	4
<b>III. Community Service Activities</b> .....	5
A. Trick-or-Treat for Canned Goods .....	5
B. Habitat for Humanity .....	5
C. Math Counts .....	5
D. Thanksgiving Dinners .....	5
E. Engineering Day at the Mall .....	5
F. Beer and Wine Festival benefiting Sunshine Camps.....	6
G. SURE Walks .....	6
H. Blood Drive .....	7
<b>IV. College and Departmental Involvement</b> .....	8
A. Announcement Display System.....	8
B. Scholarship Endowment.....	8
C. Free Lower-Division Tutoring .....	9
D. Registration Advising .....	9
E. Freshman Burger Burn .....	10
F. Student Engineering Gift Campaign .....	10
G. Fajita Fest .....	11
H. Electrical Engineering Course Notes .....	11
I. 25¢ Cokes .....	11
<b>V. Member Services</b> .....	12
A. Computer Systems .....	12
B. Resume Book .....	13
C. Office .....	13
D. Graduate School Information .....	13
<b>VI. Pledge Program</b> .....	14
A. Dress-Up Week .....	14
B. Signature Party .....	14
C. Pizzarama .....	14

<b>VII. Social Activities</b> .....	15
A. Lake Party .....	15
B. Paintball .....	15
C. Smoker .....	16
D. Movie Night.....	16
E. Banquet .....	16
F. Broomball.....	17
G. Engineering Week.....	17
H. Spring Olympics .....	18
I. Intramural Softball .....	18
J. Tubing .....	18
<b>VIII. Summary</b> .....	19

## Introduction

The Psi Chapter of Eta Kappa Nu was founded on April 24, 1928 at The University of Texas at Austin (UT). From its headquarters in the Engineering Science Building, home of UT's Electrical and Computer Engineering (ECE) Department, the Psi Chapter of HKN brings together top students to provide service to the university and the community. Additionally, the Psi Chapter strives to develop their members in professionalism, leadership, and interpersonal skills by providing them with numerous opportunities to interact with the university, the community, industry, and their fellow students.

The 1994-95 school year has been another successful one for the Psi Chapter of HKN. Numerous accomplishments and new service projects throughout the past year, as well as our thriving social activities and pledge program, indicate that we continue to tap into the seemingly endless potential of our organization. We are proud to take this opportunity to share with you the many outstanding programs, activities, and accomplishments of the Psi Chapter this 1994-95 academic year.

## Membership

Membership for the 1994-95 academic year consisted of 107 members in the fall semester and 108 in the spring. These members make all of our projects and activities possible each semester, and we are very thankful for their continuous participation and proud of their many accomplishments in making our chapter what it is today!

### OFFICERS AND ADVISORS

Each semester, ten members step forward to assume the leadership of the Psi Chapter of HKN. These officers devote countless hours of time and effort in planning, decision making, coordinating and administering, and the chapter relies heavily on them for the efficient operation of the organization and its activities.

Four members of the Electrical and Computer Engineering faculty act as advisors to our society. On many occasions, we turn to our advisors for their insight and wisdom on issues that arise and on ways to improve the organization.

The 1994-95 officers and advisors are listed below:

	Fall 1994	Spring 1995
<b>President</b>	Kristen Welker	Brian Carlson
<b>Vice President</b>	Brian Carlson	Brian Rea
<b>Treasurer</b>	Brian Rea	Chris Stoll
<b>Recording Secretary</b>	Chad Anson	Jeannie Lee
<b>Corresponding Secretary</b>	Owosimiwaiye Shonowo	Joanna Gariazzo
<b>Bridge Correspondent</b>	Brian Walters	Phil Stam
<b>Pledge Secretary</b>	Joanna Gariazzo	Chris Alger
<b>Financial Chair</b>	Chris Stoll	Tony Liu
<b>SEC* Delegates</b>	Phil Stam Cedric Lam	Adnan Shaikhali Bertrand Chiu
<b>Faculty Advisors</b>	Mack Grady Christine Maziar Al Tasch Jack Lee	Christine Maziar Al Tasch Jack Lee Takis Konstantopolous

\* SEC = Student Engineering Council

## Community Service

The Psi Chapter of Eta Kappa Nu is committed to continually providing service to the community. Our membership is provided with several opportunities for service each year, and we are always looking for new ways to help the community. Some of the ways our members participate in the Austin community are listed below:

### TRICK-OR-TREAT FOR CANNED GOODS

This was a new project for HKN this school year. On Halloween night, members of HKN went from door to door "trick-or-treating" for canned goods. The collected food was donated to the Capital Area Food Bank. The collections amounted to hundreds of pounds of food. The success of this project, as well as the fun involved for our members, ensures that this project will carry on well into the future.

### HABITAT FOR HUMANITY

Every year, HKN members volunteer their help to Habitat for Humanity, a non-profit organization that builds homes and sells them to low income families at a minimal cost. The Psi Chapter volunteers each semester to aid in the construction of these homes. In the spring, Habitat for Humanity was unable to accommodate the large group, so members helped out individually throughout the semester.

### MATH COUNTS

Math Counts is a junior high school math tournament which takes place each spring. The contest for the entire state of Texas is hosted at The University of Texas at Austin by TSPE. Members of HKN volunteer to act as proctors or judges for the math contest.

### THANKSGIVING DINNERS

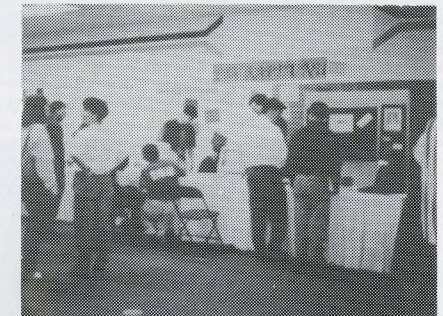
This fall, HKN purchased and delivered Thanksgiving dinners to two low income Austin families. The dinners consisted of items for traditional Thanksgiving dinners plus a few staple items. These included turkeys, canned goods, rolls, flour, sugar, pies, stuffing, and more.

### ENGINEERING DAY AT THE MALL

Each spring during National Engineering Week, UT student societies gather in a local mall for an event called Engineering Day at the Mall (EDAM). This event is intended to introduce students in grade school to the various aspects of engineering and to encourage them to consider entering an engineering profession. Each society spends the day putting on an interactive demonstration of an engineering topic.

This year, HKN demonstrated the Internet and the World Wide Web. A special EDAM home page was created with links to various topics that might be of interest to kids. You can view the home page at the following URL:

<http://nesc.me.utexas.edu/~hkn/EDAM/covergif.html>



Engineering Day at the Mall - HKN members demonstrate the World Wide Web at a nearby mall. February 1995

### BEER AND WINE FESTIVAL BENEFITING SUNSHINE CAMPS

This spring, HKN volunteered 65 man-hours in setting up for the Annual Beer and Wine Festival hosted by the Greater Texas Home Brew Society. Proceeds from the festival went to support Sunshine Camps.

### SURE WALKS

SURE Walk (Students United for Rape Elimination) is a program that provides students who are walking through campus late at night with two escorts. SURE Walk stations are set up at the main UT libraries every weeknight from 10pm - 3am, and students may call the tables by telephone if they need an escort anywhere on campus. Members of Eta Kappa Nu volunteer each semester as escorts for the SURE Walk program.

### BLOOD DRIVE

Actives and pledges are encouraged to donate blood during the frequent campus blood drives. Blood donations are recognized by the chapter as community service and can be counted towards the service requirements of the society.

## NEW INITIATES

In the 1994-95 school year, the following individuals pledged HKN and were inducted into the society. Each of them has proven to have "a good supply of common sense," "the capacity and willingness for hard work," and "the congenial nature and adaptability for working in harmony with all sorts of people." We are honored to have them as members and feel confident that they will lead the society to continued success in the future.

### Fall 1994

Frank Abou-Yazbeck	Chris Alger	Tom Bailey
Kin Foong Chan	Rajat Chaudhry	Jonas Chen
Bertrand Chiu	Adam D'Urso	James Ho
Matt King	Justine Lau	Kerry Lee
Siak Lee	Victor Limary	Tony Liu
Mitchel MacNair	David Onsongo	Michael Romell
Adnan Shaikhali	Benny Soetarnan	Da-Chih Tang
James Yu		

### Spring 1995

Amit Agrawal	Blake Bataglia	Michael Chang
Paul Chou	Andy Clayton	Albert Danysh
Chung Fu	Sumanth Gopinath	Justin Jose
Aneesh Koorapaty	Hin Kwai Lee	Colby Leider
Nathan Mercantel	Mohammed Morad	Hitch Nelson
Eric Peterson	Brian Pouya	Rohit Prasankumar
Ooneb Bin Saadat	John Schumann	Niraj Sheth
Hock Lu Tan	Shariq Tariq	Vanessa Trujillo
Brian Winstead	Joseph Yu	Muhammad Zafar
Pavan Zaveri		

## MOST OUTSTANDING MEMBERS

Twice a year at the end of semester banquets, members are recognized for any special contributions to the society. While many members are so recognized, very select members are presented with Most Outstanding Member Awards for extraordinary involvement and participation in the HKN projects for the semester. Generally, one Most Outstanding Active Award and one Most Outstanding Pledge Award is given each semester. However, sometimes the members make it difficult to decide on just one for each category. This academic year, we were unusually blessed:

	Fall 94	Spring 95
<b>Most Outstanding Pledges</b>	Chris Alger Tom Bailey	Sumanth Gopinath Rohit Prasankumar
<b>Most Outstanding Actives</b>	Matt Desai Shelly Stepenskik	Adam D'Urso Niman Kenkre

Another outstanding member whom we wish to recognize is Lillian Ho. Lillian was the 1994 recipient of the Alton B. Zerby Outstanding EE Student Award. She has been recognized numerous times by The University of Texas, the Electrical Engineering Department, Women In Engineering, and others. Lillian was also the president of the Psi Chapter of HKN in the spring of 1994. She graduated from the University of Texas in May of 1995 and is now working for McKinsey & Company, Inc. We wish her the best of luck in all her endeavors.

## College and Department Service

In the many years since our founding at The University of Texas in 1928, the Psi Chapter has developed a strong partnership with the ECE Department and the College of Engineering. HKN provided the following services to the department and college last year:

### ANNOUNCEMENT DISPLAY SYSTEM

In the Fall of 1994, Eta Kappa Nu and the ECE Department funded the purchase of an Announcement Display System. HKN donated \$1000, 50% of the cost of this system consisting of a 25" monitor, laser disk audio/video player, and computer control system. The system's primary purpose is to allow the ECE Department and the ECE student organizations to post important information and announcements. It is also capable of showing television broadcasts and taped or live presentations. The monitor has been installed at the entrance to the Engineering Science Building.



Announcement Monitor - Dr. Steven Szygenda, ECE Department Chairman, and HKN Vice President Brian Carlson present the new announcement display system. November 1994

### SCHOLARSHIP ENDOWMENT

In 1989, the Psi Chapter started a scholarship endowment for the ECE Department with an initial investment of \$3500. Each semester, another \$500-\$1000 was added to the endowment. This spring, the endowment was completed as the Scholarship fund reached a total of \$10,000.

With the interest on this endowment, a \$500 scholarship will be awarded to one ECE student each year beginning in the 1995-96 school year. The scholarship applications will be screened by the Psi Chapter of HKN, and a recipient will be chosen on merit by a committee of ECE faculty appointed by the ECE Department Chairman.

### FREE LOWER-DIVISION TUTORING

The Psi Chapter of HKN provides free tutoring for all lower-division courses two nights a week throughout the school year. Tutoring is one of our oldest and most successful departmental service projects. Our actives and pledges provide about 125 man-hours of tutoring per semester.



Tutoring - Members of HKN spend a Tuesday evening tutoring lower-division EE students.

### REGISTRATION ADVISING

Members of the faculty and administration of the ECE Department have entrusted the Psi Chapter of HKN to assist with the important responsibility of advising its 1400 undergraduate students during pre-registration each semester. This is an important part of the operation of the ECE Department. HKN members must be aware of pre-requisites, work and course load restrictions, requirements for admission into major sequence, requirements for graduation, and course organization. Since HKN members are also ECE students, they are able to advise fellow students as to the content, difficulty, and time demands of ECE courses. This activity is a service to the students as well as the

department. Without the aid of our members, the department could not advise all of its students.

#### FRESHMAN BURGER BURN

The Freshman Burger Burn is part of the Freshman Retention Program initiated by HKN in the Fall of 1989. This activity brings together freshmen with ECE faculty and upper-division students in a nearby park for free food and fun. The Burger Burn is intended to welcome new freshmen to the ECE Department and to give them the opportunity to meet with individuals who can help them be successful at the university. HKN coordinates this activity every fall semester with the aid of the other ECE student organizations (Biomedical Engineering Society, IEEE, and IEEE Computer Society). Funding is provided by the ECE Department.



Freshman Burger Burn - Freshmen EE students help themselves to burgers at Eastwoods Park. September 1994

#### STUDENT ENGINEERING GIFT CAMPAIGN

Every year, the Student Engineering council sponsors a campaign to raise money from alumni and graduating seniors from the College of Engineering. Money from this campaign goes towards engineering scholarships and worthwhile student organized projects. HKN supports the Student Engineering Gift Campaign by volunteering members who work as callers and organizers.

### Member Services

HKN provides a number of services for its members. Listed below are some of the ways we try to help our members continue to be successful in school and pursue their professional goals.

#### COMPUTER SYSTEMS

HKN provides its membership with extensive computing and printing resources to aid them in their work at the university. There were two big additions to our computer systems this past year. In the fall of 1994, we purchased a Quadra 630 with a Bernoulli MegaDisk Drive. This spring, Dell Computer Company donated a 60 MHz Pentium computer with CD ROM sound system and a FAX modem.

Additional computer equipment includes a Macintosh IIsi, a Macintosh SE, an Apple Personal Laser Writer, an Apple Image Writer, an Apple Talk network with the other ECE societies, and a MICOM connection to the Internet. We provide software for these machines to fulfill the typical needs of our users. In the upcoming year, we plan to phase out some of our older equipment and to establish ethernet connections to the Internet for all of our computer equipment.



New Dell Computer - Members gather around the newest addition to the HKN computer systems. Special thanks to Dell Computer for their generous contribution. April 1995

#### FAJITA FEST

Each semester, HKN cosponsors a "Fajita Fest" for the ECE Department with the help of the other ECE societies. Approximately 400 students, faculty, and staff come together for this event in a nearby park to socialize and to indulge in chicken and beef fajitas, chips and salsa, and beverages. Basketball, volleyball, and horseshoes equipment is available for those who attend. HKN prepared and served all of the food at both Fajita Fests this year.

#### ELECTRICAL ENGINEERING COURSE NOTES

HKN publishes course notes for 10-20 ECE courses each semester. The Financial Chair coordinates with the ECE faculty to gather course notes. These notes are printed, bound with laminated covers or 3-ring binders, and sold at the HKN office. Approximately 2500 course notes were sold this academic year.

#### 25¢ COKES

As a service to the department, HKN makes available cold soft drinks to everyone for only 25¢. We sell approximately 4000 sodas every school year to members, students, faculty, and staff. We budget a \$400 net loss for this service.

#### RÉSUMÉ BOOK

The Psi Chapter produces a résumé book each semester which consists of résumés for active members who are seeking employment or graduate study opportunities. These books are distributed to companies and graduate schools free of charge upon request.

#### OFFICE

The HKN office is conveniently located on the ground floor of the Engineering Science Building (ENS 104). The office is a great place for our members to take a break or get some work done between classes. Some of the benefits that come with the office are a refrigerator, a microwave, a couch, a work area, a telephone, computer systems, a place to hang your coat (or suit if a member is interviewing between classes), and a radio. The office is almost always open.

#### GRADUATE SCHOOL INFORMATION

During the Spring semester, HKN Psi worked to increase the awareness of graduate school opportunities for our members. We worked more closely with the graduate school recruiters for the college and the department. We collected catalogs from many graduate schools across the country to make available to our members. Also, we added a graduate school web page off of our home page.

Also, we tried to see if there was interest in creating a national database of HKN members interested in graduate school to distribute to our recruiters and other schools' recruiters. After contacting UC-Berkeley, MIT, Purdue, Michigan, and Illinois, we determined that there was not an agreeable way to do this at this time, besides us, only Michigan compiled a list of interested members. We are investigating the possibility of creating a database from our web page at this time that would allow HKNers from across the United States to enter some basic information which could be made available to graduate schools.

### Pledge Program

Potential candidates for membership in Eta Kappa Nu are invited to enter into a semester-long pledge process through which we can ensure that they possess the three qualities we require of all of our members: scholarship, character, and personality. During the semester, pledges are required to perform a minimum of 10 hours of service, attend regular meetings, learn about the society, attend certain HKN events, and get to know the officers, actives, other pledges, faculty advisors, and other ECE faculty.

In addition to the basic pledge requirements, there are a few events associated with the pledge process:

#### DRESS-UP WEEK

The week following the first pledge meeting, the pledges are asked to dress in nice business attire whenever they are on campus. This process allows them to be recognized as pledges of Eta Kappa Nu, thus acknowledging their accomplishments in school.

#### SIGNATURE PARTY

Early in the pledge process each semester, a social gathering is held at a local bar and grill for the actives and pledges to get together to meet and get to know each other. This event is named after the signature books that the pledges must have signed by the officers, actives, faculty, and other pledges that they meet.

#### PIZZARAMA

Actives and pledges are invited to come together for these pizza parties which take place twice a semester at a pizza place near campus. The Pizzaramas are another chance for the actives and pledges to really get to know each other in a non-academic environment. Pledges who are unable to attend the Pizzaramas must have an interview with an officer.

#### SMOKER

The Smoker brings together HKN members and ECE faculty for the social highlight of the semester. Each semester, a faculty member of the ECE Department opens up their home for this semi-formal affair. HKN spends two days preparing the extraordinary food that is available in large quantities at the Smoker; never does a guest leave hungry. The Smokers this year were hosted by Dr. Terry Wagner in the fall and Dr. Steven Szygenda, the ECE Department Chairman, in the spring.



Smoker - HKN members engage in pleasant conversation in Dr. Terry Wagner's living room. October 1994

#### MOVIE NIGHT

Each semester, we gather once or twice at a member's residence to watch movies. In the spring, for instance we got together to watch *Honeymoon in Vegas*. We originally wanted to watch *Blazing Saddles*, but we got a chewed up tape and every other rental store was out of it!

#### BANQUET

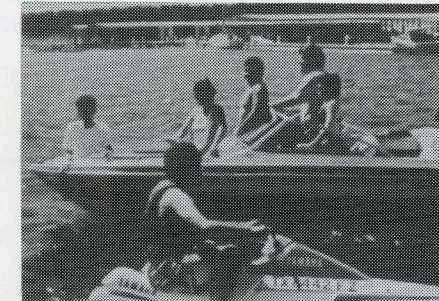
At the end of each semester, the Psi Chapter of HKN and the ECE faculty gather for a semi-formal banquet at a nice restaurant in the area. At this banquet, we celebrate our accomplishments over the semester and recognize individuals for their contributions.

### Social Activities

The chapter sponsors several social activities and events for its members each semester. Social activities play an important role in increasing and maintaining interest in the organization. They are designed to provide members an escape from the pressures of school and to provide the time for members to meet each other and build friendships.

#### LAKE PARTY

This party on the lake takes place early in the fall semester. HKN rents two speed boats for water skiing and three wave runners for a day out at Lake Travis. Members and guests join us at the lake side to indulge in water sports, lunch, and a last chance to just relax and enjoy the sun before they get too deep into their course work.



Lake Party!!!! - HKN actives enjoying wet and wild fun and sun on Lake Travis. September 1994

#### PAINTBALL

This spring, members of the Psi Chapter gathered one Sunday afternoon for a friendly paintball war. The intense combat lasted for several hours, and few escaped without paying the price in paint pellet bruises. But all emerged happy and lived in harmony ever after... or at least until next semester!

Additionally, the officers for the next semester are introduced to the chapter and the ECE faculty, and responsibilities for the chapter are turned over to this new set of leaders.

A distinguished guest is invited to each banquet to speak on a topic of interest. In the fall of 1994, the Banquet was held at The Belgian Restaurant and the Keynote Speaker was Dr. Marc Lewis, Associate Professor of the UT Department of Psychology. In the spring, the banquet took place at the Old San Francisco Steakhouse, and we were blessed with a very special speaker, J. J. Pickle, former United States Congressman. Mr. Pickle spoke about his experiences in the government and his vision of the future of Austin.



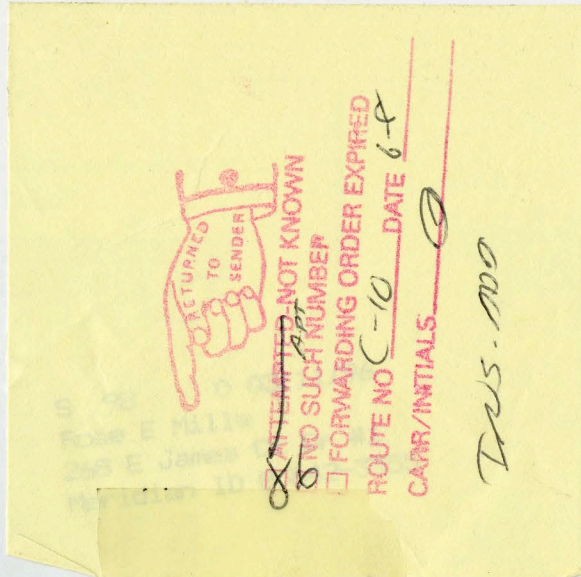
HKN Banquet - Dr. Herbert Woodson, Dean of the College of Engineering, and HKN Vice President Brian Rea thank former Congressman Jake J. Pickle for his excellent speech. May 1995

#### BROOMBALL

For those of you who have never experienced this awesome sport, broomball is a little bit like hockey, but instead of using ice skates, the players navigate the ice rink in regular rubber-soled shoes. Each semester, HKN tries to issue at least one broomball challenge to one of the other student organizations. We haven't lost a match in the last two years.

#### ENGINEERING WEEK

Every year during National Engineering Week, the Student Engineering Council coordinates a week full of social activities, contests, and professional development events. All of the engineering societies at The University of Texas compete by accumulating points by attending events and winning competitions. This spring, HKN came in ninth place and was the highest ranking honor society.



**Continued from, Page 23**

**SPRING OLYMPICS**

Spring Olympics is another college wide competition between the student organizations. One Sunday each spring, the societies gather at a nearby park for an afternoon of food and fun. Contests include a basketball tournament, a chili cook-off, a wheelbarrow race and much more. Our students look forward to Spring Olympics each year.

**INTRAMURAL SOFTBALL**

This spring, the Psi Chapter learned that electrical engineers are a great deal better at controlling the movement of electrons than the movement of softballs. After playing various UT student organizations in Intramural Softball, we knew we weren't ready for the pros. However, despite our 0-5 record, we never lost hope, and we had a great time both practicing and playing.

**TUBING**

Tubing took place this year at the end of the spring semester. This road trip 30 miles south to New Braunfels gave our members the opportunity to lazily float down the river for five hours and enjoy the beginnings of warmer weather. Tubing was an excellent stress reliever right before students began preparing for final exams.



Tubing - HKNers merrily, merrily, merrily float down the Guadalupe River on a sunny Saturday afternoon. April 1995

**Summary**

It has been a year of growth and progress for the Psi Chapter of Eta Kappa Nu. Our involvement in providing service to the community and the Electrical and Computer Engineering Department has continued to thrive and flourish through continued projects, such as tutoring and Habitat for Humanity, and new projects, including Trick-or-Treat for Canned Goods and the Announcement Display System donation. Furthermore, service to our membership has been expanded by our focus towards expanding our computer systems, and our social activities are as strong as ever.

The Psi Chapter's future looks just as bright. Some things to expect in the semesters to come are strengthening our relationship with industry and the professional focus of our members, developing more efficient administration of the organization, and increasing our involvement in the community.

The officers for the fall 1995 semester are as follows:

- |                                |   |
|--------------------------------|---|
| <b>President</b>               | Brian Rea   |
| <b>Vice President</b>          | Phil Stam   |
| <b>Treasurer</b>               | Chris Alger   |
| <b>Recording Secretary</b>     | Adnan Shaikhali   |
| <b>Corresponding Secretary</b> | Rohit Prankumar   |
| <b>Bridge Correspondent</b>    | Bertrand Chiu   |
| <b>Pledge Secretary</b>        | Eric Peterson   |
| <b>Financial Chair</b>         | Sumanth Gopinath  |
| <b>SEC* Delegates</b>          | Pavan Zaveri<br>John Schumann                                     |
| <br>                           |   |
| <b>Faculty Advisors</b>        | Christine Maziar<br>Al Tasch<br>Jack Lee<br>Takis Konstantopolous |

Under this leadership, we look forward to continued growth as an organization working towards the good of the community and the university. Furthermore, we look forward to the growth of our members as individuals who will use their skills for the benefit of society and their profession.

# MOVING?

**Send Your Address Changes to: HKN BRIDGE  
P.O. Box 2107  
Rolla, MO 65402**

**ALSO INCLUDE YOUR OLD ADDRESS  
OR SEND THE MAILING LABEL FROM  
THIS ISSUE OF BRIDGE MAGAZINE**