

REPORT OF THE SECRETARY

1962

To the Board of Directors  
The Institute of Electrical and Electronics Engineers, Inc.

Gentlemen,

The Report of the Secretary of The Institute of Radio Engineers for 1962 is transmitted herewith. This year is memorable because it was the Golden Anniversary of the founding of IRE. It also is the last year of its existence since, on January 1, 1963, its activities and assets became merged into the new Institute of Electrical and Electronics Engineers.

REPORT OF THE SECRETARY

1962 saw membership growth continue along that almost straight line which has been characteristic of that Institution for so many years. A slight increase in the number under the professional grades compared with the total is noted. Membership, however, outside of North America increased at a greater rate, about 20%.

Among Professional Groups, every Group grew as compared with 1961 when 18 Groups either did not record a gain or had a loss. Among Sections, membership increased about 7.3%; however, outside of North America the increase was over 20%.

The Institute of Radio Engineers, Inc.

1 East 79th Street

New York 21, New York

Publications grew sharply. TRANSACTIONS contained 19% more technical and editorial pages and produced two special issues, the first being the colossal 1,186-page Anniversary Special. TRANSACTIONS pages increased 25%.

The 1962 International Convention attracted 10.8% more registrants and increased exhibit space over 2%.

In addition to its normal duties, the staff of the Institute was burdened with a large increase of workload due to the merger activities, assisting the Secretary of the Merger Committee and engaging in a mass of tasks looking towards amalgamation of the two societies' operations, all of which was accomplished with dispatch. The Secretary wishes particularly to commend all involved.

Respectfully submitted,

Harold Pratt

March 4, 1963

REPORT OF THE SECRETARY

1962

INDEX

To the Board of Directors  
The Institute of Electrical and Electronics Engineers, Inc.

Gentlemen,

The Report of the Secretary of The Institute of Radio Engineers for 1962 is transmitted herewith. This year is memorable because it was the Golden Anniversary of the founding of IRE. It also is the last year of its existence since, on January 1, 1963, its activities and assets became merged into the new Institute of Electrical and Electronics Engineers.

1962 saw membership growth continue along that almost straight line which has been characteristic of that function for so many years. A slight increase in the number under the professional grades compared with the total is noted. Membership, however, outside of North America increased at a greater rate, about 20%.

Among Professional Groups, every Group grew as compared with 1961 when 18 Groups either did not record a gain or had a loss. Among Sections, membership increased about 7.3%; however, outside of North America the increase was over 22%.

Publications grew sharply. The PROCEEDINGS contained 19% more technical and editorial pages and produced two special issues, the first being the colossal 1,186-page Anniversary Issue. The TRANSACTIONS pages increased 25%.

The 1962 International Convention attracted 10.8% more registrants and increased exhibit space over 2%.

In addition to its normal duties, the staff of the Institute was burdened with a large increase of workload due to the merger activities, assisting the Secretary of the Merger Committee and engaging in a mass of tasks looking towards amalgamation of the two societies' operations, all of which was accomplished with dispatch. The Secretary wishes particularly to commend all involved.

Respectfully submitted,

Haraden Pratt

March 4, 1963

REPORT OF THE SECRETARY

INDEX

SECTION A

	<u>Page</u>
Table 1 - 1962 Membership by Grade, by Percentage; 5-year Comparison .....	1
Table 2 - 1962 Geographical Membership Distribution by Grade; 5-year Comparison .....	1
Table 3 - 1962 Membership by Annual Dues Rate, by Grade .....	1
Table 4 - 1962 Membership by U. S. State, by Grade .....	2
Table 5 - 1962 Membership by Region, by Section, by Grade, by Dues Rate .....	3
Table 6 - 1962 Membership in Countries other than U.S., by Grade, by Country, by Dues Rate; 4-year Comparison .....	6
Table 7 - 1962 U.S. Possessions and Overseas Military Membership, by Grade, by Dues Rate; 3-year Comparison .....	10
Table 8 - 1962 Life Members, by Grade; 3-year Comparison .....	10
Table 9 - 1962 Membership Changes, by Grade .....	11
Table 10 - Membership by Grade, 1912-1962; Membership Graph, 1912-1962 .....	12
Table 11 - 1962 Deceased Members .....	13

SECTION B

Table 1 - 1962 Professional Group Activities .....	14
Table 2 - 1962 National Technical Meetings .....	15
Table 3 - 1962 Professional Group Membership, by Group; 5-year Comparison .....	19
Table 4 - 1962 Affiliates by Group, 5-year Comparison .....	20
Table 5 - Percentage Changes in Group Membership, by Group; 2-year Comparison .....	21
Table 6 - 1962 Professional Group Chapters, by Group .....	22
Table 7 - 1962 Professional Group Membership by Group, by Region, by Section .....	26

SECTION C

Table 1 - IRE International Convention Statistics .....	30
---	----

SECTION D

Table 1 - 1962 Editorial Department Activities .....	31
--	----

SECTION E

Table 1 - 1962 Technical Department Activities .....	33
--	----

SECTION F

Table 1 - 1962 Section and Subsection Meetings and Membership by Region, by Section; 1-year Comparison .....	36
Table 2 - 1962 Professional Group Chapter Meetings by Section, by Group; 1-year Comparison .....	40
Table 3 - 1962 Section and Subsection Publications .....	46

SECTION G

Table 1 - 1962 Student Branches and Branch Membership, by Region, by Section .....	47
--	----

REPORT OF THE SECRETARY

INDEX

Page

1 Table 1 - 1962 Membership by Grade, by Percentage; 5-Year Comparison

1 Table 2 - 1962 Geographical Membership Distribution by Grade; 5-Year Comparison

1 Table 3 - 1962 Membership by Annual Dues Rate, by Grade

2 Table 4 - 1962 Membership by U. S. State, by Grade

3 Table 5 - 1962 Membership by Region, by Grade, by Dues Rate

3 Table 6 - 1962 Membership in Countries other than U. S., by Grade, by Country, by Dues Rate

6 Table 7 - 1962 U. S. Possessions and Overseas Military Membership, by Grade, by Dues Rate; 5-Year Comparison

10 Table 8 - 1962 Life Members, by Grade; 5-Year Comparison

10 Table 9 - 1962 Membership Changes, by Grade

11 Table 10 - Membership by Grade, 1912-1962; Membership Graph, 1912-1962

13 Table 11 - 1962 Deceased Members

14 Table 1 - 1962 Professional Group Activities

15 Table 2 - 1962 National Technical Meetings

19 Table 3 - 1962 Professional Group Membership, by Group; 5-Year Comparison

20 Table 4 - 1962 Affiliates by Group; 5-Year Comparison

21 Table 5 - Percentage Changes in Group Membership, by Group; 5-Year Comparison

22 Table 6 - 1962 Professional Group Chapters, by Group

26 Table 7 - 1962 Professional Group Membership by Group, by Region

30 Table 1 - IRE International Convention Statistics

31 Table 1 - 1962 Editorial Department Activities

33 Table 1 - 1962 Technical Department Activities

36 Table 1 - 1962 Section and Subsection Meetings and Membership by Region, by Section; 1-Year Comparison

40 Table 2 - 1962 Professional Group Chapter Meetings by Section, by Group; 1-Year Comparison

46 Table 3 - 1962 Section and Subsection Publications

47 Table 1 - 1962 Student Branches and Branch Membership, by Region, by Section

SECTION A

Table I - 1962 Membership by Grade, by Percentage; 5-Year Comparison

Grade	Total		Percentage		Total		Percentage	
	No.	% of Total	No.	% of Total	No.	% of Total	No.	% of Total
Fellow (F)	1,103	1	964	1	896	1	823	1
Senior Member (SM)	11,112	11	10,570	11	10,001	11	9,463	12
Member (M)	56,667	55	52,284	54	47,114	53	38,977	49
Associate (A)	13,960	13	13,566	14	12,806	15	13,165	17
Student (S)	20,713	20	19,167	20	17,662	20	16,738	21
Totals	103,555		96,551		88,479		79,166	

Table 2 - Geographical Membership Distribution by Grade; 5-Year Comparison

	F	SM	M	A	S	Total
U. S.	1,004	10,159	52,364	12,148	18,222	93,897
U. S. Possessions	1	5	39	14	9	68
U. S. Overseas						
Military	-	37	534	126	45	742
Totals	1,005	10,201	52,937	12,288	18,276	94,707
Canada	27	255	1,684	791	1,509	4,266
Other Countries	71	656	2,046	881	928	4,582
Totals	1,103	11,112	56,667	13,960	20,713	103,555

	1962	1961	1960	1959	1958
Total	103,555	96,551	88,479	79,166	71,361
U. S. and Possessions	94,707	88,956	81,634	73,044	65,786
Other Countries (incl. Canada)	8,848	7,595	6,845	6,122	5,575
Per Cent Other Countries	8.5	7.9	7.7	7.7	7.8

Table 3 - 1962 Membership by Annual Dues Rate, by Grade

	\$15.00	\$10.00	\$5.00	Dues Waived
Fellow	976	2		125
Senior Member	10,035	967		110
Member	38,664	17,929		74
Associate	9,071	4,881		8
Student			20,713	
Totals	58,746	23,779	20,713	317

## SECTION A

Table 4 - 1962 Membership by U. S. State, by Grade

State	Fellow	Senior		Associate	Student	Total
		Member	Member			
Alabama	-	27	416	68	163	674
Alaska	-	8	78	35	16	137
Arizona	10	130	700	118	208	1,166
Arkansas	2	11	47	18	44	122
California	172	2,184	11,335	2,085	2,634	18,410
Colorado	7	87	506	122	204	926
Connecticut	20	176	852	242	280	1,570
Delaware	-	7	53	9	50	119
District of Columbia	40	224	574	144	191	1,173
Florida	25	282	1,490	373	312	2,482
Georgia	1	43	210	75	146	475
Hawaii	-	13	110	57	53	233
Idaho	-	2	49	4	43	98
Illinois	30	355	1,907	690	813	3,795
Indiana	6	115	630	142	442	1,335
Iowa	7	76	432	85	200	800
Kansas	2	24	241	71	128	466
Kentucky	1	40	167	39	77	324
Louisiana	1	14	116	34	79	244
Maine	4	6	55	11	48	124
Maryland	42	593	2,591	473	456	4,155
Massachusetts	85	668	3,787	810	1,221	6,571
Michigan	20	123	831	240	448	1,662
Minnesota	5	56	739	108	219	1,127
Mississippi	-	8	67	19	148	242
Missouri	5	79	547	149	339	1,119
Montana	-	5	58	18	44	125
Nebraska	-	29	126	49	153	357
Nevada	-	11	83	22	21	137
New Hampshire	2	31	192	50	52	327
New Jersey	210	1,153	4,601	1,002	938	7,904
New Mexico	3	110	505	138	205	961
New York	152	1,568	8,168	2,207	2,999	15,094
North Carolina	3	72	419	108	159	761
North Dakota	-	1	24	5	43	73
Ohio	28	375	1,633	494	779	3,309
Oklahoma	3	41	284	103	145	576
Oregon	4	32	180	59	155	430
Pennsylvania	58	559	2,623	580	1,203	5,023
Rhode Island	-	15	121	26	51	213
South Carolina	3	11	86	31	67	198
South Dakota	-	3	27	10	39	79
Tennessee	2	24	180	36	158	400
Texas	19	347	1,893	436	761	3,456
Utah	-	21	169	24	172	386
Vermont	-	10	29	13	38	90
Virginia	22	271	1,100	250	248	1,891
Washington	6	78	881	132	321	1,418
West Virginia	-	6	42	23	50	121
Wisconsin	4	33	392	108	416	953
Wyoming	-	2	18	3	43	66
Totals	1,004	10,159	52,364	12,148	18,222	93,897

## SECTION A

Table 5 - 1962 Membership by Region, by Section, by Grade, by Dues Rate

REGION 1 Section	F		SM		M		A		Student \$5	Sub- Total	Section Total
	\$15	\$10	\$15	\$10	\$15	\$10	\$15	\$10			
Binghamton	-	28	7	258	141	40	35	81			590
Boston	83	517	61	2,226	924	411	219	1,054	5,495	6,993	
Merrimack Valley	3	65	8	282	165	73	42	145	783		
New Hampshire	1	30	1	134	58	20	21	31	296		
Northern Vermont	-	6	-	15	9	6	4	34	74		
Providence	1	16	2	118	70	38	22	78	345		
Buffalo-Niagara	-	49	5	230	87	46	34	41		492	
Connecticut	10	59	7	289	133	69	52	225	844	1,572	
Fairfield County	10	102	9	285	146	77	44	55	728		
Elmira-Corning	2	19	1	79	27	13	12	83		236	
Erie	1	6	1	28	14	6	5	31		92	
Ithaca	2	16	15	57	34	3	3	100		230	
Rochester	1	66	4	232	82	49	41	139		614	
Rome-Utica	-	51	9	246	149	55	27	45		582	
Schenectady	15	80	4	152	47	18	22	224		562	
Syracuse	17	174	19	542	201	72	30	164		1,219	
Western Mass.	2	23	1	117	66	30	15	68		322	
Totals	148	1,307	154	5,290	2,353	1,026	628	2,598		13,504	
REGION 2											
Long Island	50	549	33	2,298	645	563	268	798			5,204
New York	45	237	15	944	463	364	225	1,127	3,420	6,370	
Catskill	-	6	-	131	40	22	8	32	239		
Mid-Hudson	2	27	3	387	170	70	29	50	738		
Monmouth	23	149	13	416	174	85	32	88	980		
Westchester	18	121	14	439	122	123	43	113	993		
No. New Jersey	117	601	24	1,757	586	437	146	579		4,247	
Princeton	53	142	6	392	152	71	32	149		997	
Totals	308	1,832	108	6,764	2,352	1,735	783	2,936		16,818	
REGION 3											
Atlanta	1	61	2	212	88	57	32	274		727	
Baltimore	20	240	34	826	443	124	74	194		1,955	
Canaveral	4	73	5	312	136	65	35	53		683	
Florida West Coast	7	63	1	236	130	69	27	40		573	
Gainesville	2	21	1	56	27	15	9	113		244	
Huntsville	-	23	4	212	157	37	22	202	657	869	
Memphis	-	3	-	13	20	10	4	66	116		
Nashville	2	6	-	28	16	3	3	38	96		
Miami	3	36	2	103	29	26	25	56	280	360	
Palm Beach	2	8	1	29	21	4	7	8	80		
Mobile	-	1	-	28	38	3	6	3		79	
North Carolina	1	41	3	187	104	37	20	35	428	756	
Eastern No. Car.	1	20	3	40	47	19	14	83	227		
Western No. Car.	1	5	-	28	10	10	6	41	101		
Northwest Florida	-	5	-	59	41	14	14	21	154	193	
Panama City	-	-	-	23	6	4	-	6	39		
Orlando	5	60	6	195	87	42	17	15		427	
Philadelphia	48	518	34	2,096	866	395	186	807	4,950	5,502	
Lancaster	2	33	-	90	43	23	15	29	235		
Lehigh Valley	3	20	1	58	39	10	4	97	232		
Reading	-	11	7	27	20	7	1	12	85		
South Carolina	3	10	1	63	35	17	17	69		215	
Virginia:											701
Piedmont	3	38	-	145	67	12	8	109	382		
Tidewater	1	14	1	114	96	25	21	47	319		
Washington, D. C.	80	693	67	1,922	715	402	201	542		4,622	
Totals	189	2,003	173	7,102	3,281	1,430	768	2,960		17,906	

SECTION A Table 5 - 1962 Membership by Region, by Section, by Grade, by Dues Rate (continued)

REGION 4 Section	F		SM		M		A		Student \$5	Sub- Total	Section Total
	\$15	\$10	\$15	\$10	\$15	\$10	\$15	\$10			
Akron	3	-	29	5	111	78	39	25	86		
Central Penn.	3	-	35	2	89	42	14	5	94		376
Cincinnati	6	-	44	2	194	64	35	20	71		284
Cleveland	7	-	72	9	206	100	75	49	182		436
Columbus	4	-	42	9	179	105	43	20	178		700
Dayton	8	-	99	46	339	166	131	10	208		580
Detroit	20	-	96	12	504	236	130	51	380		1,007
Emporium	1	-	46	2	44	16	11	10	12		1,429
Pittsburgh	17	-	72	6	270	148	84	34	274	905	142
Cambridge	-	-	9	2	18	13	8	7	4	61	966
Toledo	-	-	12	-	50	27	18	8	51		166
Western Mich.	-	-	8	2	41	28	19	12	62		172
Williamsport	-	-	4	-	20	8	6	3	18		59
Totals	69	-	568	97	2,065	1,031	613	254	1,620		6,317

REGION 5 Section	F		SM		M		A		Student \$5	Sub- Total	Section Total
	\$15	\$10	\$15	\$10	\$15	\$10	\$15	\$10			
Cedar Rapids	8	-	71	3	248	157	49	31	199	766	801
Burlington	-	-	2	-	19	8	2	3	1	35	
Chicago	30	-	323	26	1,137	487	406	291	1,077		3,777
Evansville-Owensboro	-	1	38	1	59	30	14	7	32		182
Fort Wayne	2	-	28	-	33	111	24	4	89		291
Indianapolis	4	-	57	2	196	124	35	36	288		742
Louisville	-	1	3	2	48	38	15	7	66		180
Milwaukee	4	-	28	6	232	134	72	31	406		913
Omaha-Lincoln	-	-	26	3	86	40	23	26	153		357
So. Bend-Mishawaka	-	-	19	-	98	37	18	12	42		226
Twin Cities	5	-	54	6	469	347	82	46	294		1,303
Totals	53	2	649	49	2,625	1,513	740	494	2,647		8,772

REGION 6 Section	F		SM		M		A		Student \$5	Sub- Total	Section Total
	\$15	\$10	\$15	\$10	\$15	\$10	\$15	\$10			
Beaumont-Pt. Arthur	-	-	6	-	28	13	17	12	60		136
Dallas	11	-	138	15	582	339	84	45	139		1,353
Denver	7	-	77	4	301	161	77	37	239	903	992
Pikes Peak	-	-	6	2	48	14	8	3	8		89
El Paso	-	-	8	-	65	42	20	16	13	164	284
Las Cruces	-	-	7	-	39	24	9	6	35	120	
Fort Worth	1	-	33	4	147	51	29	21	77		363
Houston	3	-	79	3	270	106	69	47	163		740
Kansas City	3	-	48	4	182	89	73	34	239		672
Little Rock	2	-	11	-	26	21	12	6	44		122
Lubbock	-	-	2	-	23	8	12	6	41		92
New Orleans	1	-	16	-	88	72	20	26	109		332
Oklahoma City	2	-	16	1	106	56	37	22	70		310
St. Louis	4	-	49	7	277	159	66	35	214		811
San Antonio-Austin	4	-	43	3	122	73	26	19	154		444
Shreveport	-	-	12	1	20	9	11	8	14		75
Tulsa	1	-	22	2	80	42	35	9	75		266
Wichita	-	-	4	1	68	51	20	11	30		185
Totals	39	-	577	47	2,472	1,330	625	363	1,724		7,177

SECTION A Table 5 - 1962 Membership by Region, by Section, by Grade, by Dues Rate (continued)

REGION 7 Section	F		SM		M		A		Student \$5	Sub- Total	Section Total
	\$15	\$10	\$15	\$10	\$15	\$10	\$15	\$10			
Alamogordo	-	-	-	-	-	-	-	-	-		
Holloman	-	-	12	-	41	21	11	8	7		100
Albuquerque	-	-	-	-	-	-	-	-	-		
Los Alamos	3	-	89	2	274	106	47	57	163		741
Anchorage	-	-	7	1	45	33	18	17	16		137
China Lake	-	-	7	-	52	30	14	2	4		109
Fort Huachuca	1	-	17	1	36	20	4	2	4		85
Hawaii	-	-	13	-	77	33	37	20	53		233
Las Vegas	-	-	5	1	34	31	15	6	4		96
Los Angeles	7	-	117	9	469	272	129	67	375	1,445	11,460
Buenaventura	-	-	35	5	109	50	19	8	16		242
Crescent Bay	26	-	280	24	721	320	99	40	173	1,683	
Orange Belt	5	-	98	8	348	177	47	40	133		856
Pasadena	13	-	108	8	359	143	76	25	142		874
San Fernando	6	-	265	28	980	348	169	66	159	2,021	
Santa Ana	8	-	210	19	950	600	188	100	222	2,297	
Santa Barbara	6	-	54	9	219	116	46	28	160		638
Southern	5	-	126	19	654	292	113	54	141	1,404	
Phoenix	8	-	70	7	343	151	61	25	110		775
Portland	4	-	34	1	122	58	40	19	159		437
Sacramento	2	-	19	3	99	71	38	16	57		305
Salt Lake City	-	-	19	4	121	91	18	9	189		451
San Diego	4	-	105	10	512	202	92	45	129		1,099
San Francisco	70	-	515	43	2,093	868	339	153	554	4,635	5,479
East Bay	15	-	62	4	252	145	56	26	284		844
Seattle	6	-	68	7	552	348	86	49	339	1,449	1,573
Richland	-	-	4	1	34	13	10	6	50		118
Tucson	2	-	35	-	112	38	17	10	94		308
Totals	191	-	2,374	214	9,608	4,577	1,789	898	3,737		23,388

REGION 8 Section	F		SM		M		A		Student \$5	Sub- Total	Section Total
	\$15	\$10	\$15	\$10	\$15	\$10	\$15	\$10			
Bay of Quinte	-	-	10	-	38	16	11	11	50		136
Hamilton	-	-	10	-	41	14	27	15	52		159
Kitchener-Waterloo	-	-	10	-	21	9	11	15	25		91
London	-	-	7	-	25	14	16	7	44	113	201
South West. Ontario	-	-	1	2	15	5	11	5	49		88
Montreal	7	-	68	5	304	159	80	50	177		850
Northern Alberta	-	-	3	-	34	15	21	18	136		227
Ottawa	13	-	58	5	217	89	50	49	88		569
Quebec	-	-	3	-	46	16	13	12	77		167
Regina	-	-	1	-	16	13	7	8	81		126
Southern Alberta	-	-	1	-	26	9	22	17	149		224
Toronto	4	-	46	3	245	94	94	102	327		915
Vancouver	1	-	12	1	62	39	45	26	185	371	420
Victoria	-	-	-	-	9	22	1	12	5	49	
Winnipeg	2	-	7	2	44	27	19	16	64		181
Totals	27	-	237	18	1,143	541	428	363	1,509		4,266

REGION 9 Section	F		SM		M		A		Student \$5	Sub- Total	Section Total
	\$15	\$10	\$15	\$10	\$15	\$10	\$15	\$10			
Benelux	6	-	40	19	62	47	8	24	28		234
Buenos Aires	4	-	23	1	39	23	23	15	138		266
Chile	-	-	2	-	3	10	6	6	27		54
Colombia	-	-	3	2	18	13	5	6	51		98
Egypt	-	-	6	1	15	5	5	1	16		49
France	10	-	49	5	60	31	40	6	4		205
Geneva	6	-	27	9	62	32	21	3	22		182
Israel	2	-	4	-	57	15	17	7	-		102
Italy	-	-	17	7	80	71	83	37	155		450
Rio de Janeiro	1	-	5	-	17	3	6	4	5		41
Tokyo	7	-	77	12	96	87	80	21	108		488
United Kingdom	24	-	112	11	259	132	64	24	54		680
Totals	60	-	365	67	768	469	358	154	608		2,849

Life Members included in \$15.00 categories.

SECTION A

Table 6 - 1962 Membership in Countries other than U. S., by Grade, by Country, by Dues Rate; 4-Year Comparison

Country	Fellow		Senior Member		Member		Associate		Student	Total	
	\$15	\$10	\$15	\$10	\$15	\$10	\$15	\$10			
Afghanistan			2						1	3	
Algeria					1				2	3	
Argentina	4		23	1	39	23	23		15	138	266
Ascension Island					1					1	1
Austria			2	6					2	10	10
Australia	2		23	5	46	26	15		3	13	133
Belgium	1		8	2	20	14	2		14	9	70
Bermuda			1		2		1			1	5
Brazil	1		11		46	17	22		11	128	236
British Guiana					1		1				2
British West Indies			1		11	2	5		1		20
Burma					4	2	1				7
Canada	27		237	18	1,143	541	428		363	1,509	4,266
Ceylon					2	2	1				5
Chile			2		3	10	6		6	27	54
Colombia			3	2	18	13	5		6	51	98
Costa Rica					1	3					4
Cuba					1		1		1		3
Cyprus					1						1
Czechoslovakia					5		6		2		13
Denmark	1		8	1	32	16	15		3	21	97
Ecuador			3		5	1	1		1		11
Egypt			6	1	15	5	5		1	16	49
El Salvador					3						3
England	19		103	11	250	127	55		23	50	638
Ethiopia					5		1			2	8
Fiji Islands					1				1		2
Finland			1		2	1	2		2		8
Formosa					5				1		6
France	10		49	5	59	31	39		6	4	203

SECTION A

Table 6 - 1962 Membership in Countries other than U. S., by Grade, by Country, by Dues Rate; 4-Year Comparison (continued)

Country	Fellow		Senior Member		Member		Associate		Student	Total	
	\$15	\$10	\$15	\$10	\$15	\$10	\$15	\$10			
Germany	7		35	9	36	20	17		6	6	136
Greece			3	1	13	3	6		5	2	33
Guatemala					2				1		3
Hong Kong					15	5	5		3		28
Hungary									4	1	5
Iceland					1	2	2				5
India	1		35	3	99	56	29		16	16	255
Indonesia					1	3	21				25
Iran			1				1				4
Iraq					2						2
Ireland			3								12
Israel	2		4		57	15	17		7		102
Italy			17	7	80	71	83		37	155	450
Japan	7		77	12	96	87	80		21	108	488
Jordan					1	2					3
Korea					4	2	2		1	1	10
Kuwait			1				1			2	5
Lebanon					1	8	1		1	2	13
Libya					1	1	1			1	4
Malaya			1		13	2			2		18
Malta					2	1					3
Mexico	1		10		29	4	11		2	13	70
Morocco					2		1				3
Netherlands	5		32	17	42	33	6		10	19	164
New Zealand			2		1		4		1		8
Nicaragua					1						1
Nigeria					1						1
Norway			4	2	17	6	7		1	2	39
Okinawa					2	2					4
Pakistan	1		2	1	8	12	3		2		29

## SECTION A

Table 6 - 1962 Membership in Countries other than U.S., by Grade, by Country, by Dues Rate; 4-Year Comparison (continued)

Country	Fellow		Senior Member		Member		Associate		Student	Total
	\$15	\$10	\$15	\$10	\$15	\$10	\$15	\$10		
Panama, Republic of					1	1	1	1		4
Paraguay			1							1
Persian Gulf					1					1
Peru			1		1	3	3	2	1	11
Philippine Islands					10	2	3	1		16
Poland			2		1	2	4			9
Portugal			1		3					4
Rumania					1					1
Saudi Arabia					5	1				6
Scotland			2		7	3	5		1	18
South Africa			5	1	21	5	9	4	3	48
Spain			1		7	3	1	1	59	72
Sudan			1		1			1		3
Sweden	3		10		52	20	45	8	44	182
Switzerland	6		27	9	62	32	21	7	22	186
Syria						4				4
Thailand					7	5	1		1	14
Turkey			1		3	4	2	2		12
Uruguay					3	2	2	1	2	10
U. S. S. R.			23				9		1	33
Venezuela			4		21	5	12	5	4	51
Viet-Nam					1				1	2
Wales					1	2	1		1	5
West Indies			1							1
Yugoslavia				1	1	2		2		6
Totals	98	-	790	121	2,469	1,261	1,035	637	2,437	8,848

Life Members included in \$15.00 categories.

## SECTION A

Table 6 - 1962 Membership in Countries other than U.S., by Grade, by Country, by Dues Rate; 4-Year Comparison (continued)

Country	1962	1961	1960	1959	Country	1962	1961	1960	1959
	Aden	0	1	0		0	Italy	450	395
Afghanistan	3	0	0	0	Japan	488	413	369	308
Algeria	3	4	1	1	Jordan	3	3	3	1
Antilles	0	2	3	0	Korea	10	9	7	6
Argentina	266	228	171	110	Kuwait	5	3	3	2
Ascension Island	1	1	0	0	Lebanon	13	11	14	13
Austria	10	6	9	4	Libya	4	3	5	7
Australia	133	112	99	97	Luxembourg	0	1	0	0
Bahamas	0	5	5	0	Malaya	18	8	9	8
Belgium	70	44	39	24	Malta	3	1	2	1
Bermuda	5	4	4	4	Mexico	70	78	60	58
Bolivia	0	0	1	1	Morocco	3	3	2	4
Brazil	236	149	153	155	Nepal	0	1	0	0
British Guiana	2	2	2	2	Netherlands	164	135	107	64
British West Indies	20	12	12	12	New Zealand	8	8	6	5
Burma	7	8	8	11	Nicaragua	1	1	2	2
Canada	4266	3758	3632	3377	Nigeria	1	4	1	0
Ceylon	5	5	3	4	Norway	39	30	30	23
Chile	54	45	18	12	Nyasaland	0	0	1	0
China	0	0	2	2	Okinawa	4	4	2	2
Colombia	98	83	39	26	Pakistan	29	20	17	15
Congo	0	0	0	1	Panama, Republic of	4	4	3	2
Costa Rica	4	3	3	2	Paraguay	1	1	1	0
Cuba	3	4	18	26	Persian Gulf	1	0	0	0
Cyprus	1	1	1	0	Peru	11	9	13	9
Czechoslovakia	13	12	11	11	Philippine Islands	16	13	13	17
Denmark	97	90	89	85	Poland	9	9	10	10
Dominican Republic	0	0	1	1	Portugal	4	6	7	8
Ecuador	11	9	7	6	Qatar	0	0	1	0
Egypt	49	38	28	23	Rumania	1	0	2	1
El Salvador	3	3	4	3	Saudi Arabia	6	6	3	4
England	638	561	485	438	Scotland	18	17	16	17
Ethiopia	8	6	6	3	Singapore	0	7	8	7
Fiji Islands	2	2	1	1	South Africa	48	40	35	39
Finland	8	6	4	3	Spain	72	22	20	16
Formosa	6	7	5	5	Sudan	3	1	1	1
France	203	168	156	152	Sweden	182	171	145	118
French West Indies	0	0	1	0	Switzerland	186	134	107	97
Germany	136	116	91	71	Syria	4	3	1	1
Gibraltar	0	0	1	0	Tahiti	0	0	1	1
Greece	33	27	19	18	Tasmania	0	1	1	1
Guatemala	3	2	3	3	Thailand	14	10	9	7
Haiti	0	2	1	1	Tunisia	0	0	1	0
Hong Kong	28	25	24	19	Turkey	12	10	6	10
Hungary	5	3	1	2	Uruguay	10	5	6	4
Iceland	5	4	5	4	U. S. S. R.	33	26	26	26
India	255	227	199	174	Venezuela	51	53	57	52
Indonesia	25	4	5	4	Viet-Nam	2	1	0	1
Iran	4	5	6	5	Wales	5	2	2	3
Iraq	2	3	4	2	West Indies	1	1	1	2
Ireland	12	14	13	11	Yugoslavia	6	5	4	1
Israel	102	96	90	80					

## GAINS:

Year	Total	Gain
1962	8848	1253
1961	7595	750
1960	6845	723
1959	6112	547

SECTION A

Table 7 - 1962 U. S. Possessions and Overseas Military Membership by Grade, by Dues Rate; 3-Year Comparison

U. S. Possessions	F		SM		M		A		Student	Total
	\$15	\$10	\$15	\$10	\$15	\$10	\$15	\$10		
Canal Zone	-	-	-	-	2	1	2	-	-	5
Guam	-	-	-	-	-	1	1	-	-	2
Marianas Islands	-	-	-	-	-	-	-	-	-	-
Puerto Rico	1	5	-	-	24	10	9	2	9	60
Virgin Islands	-	-	-	-	-	-	-	-	-	-
Wake Island	-	-	-	-	1	-	-	-	-	1
Caroline Islands	-	-	-	-	-	-	-	-	-	-
<b>Totals</b>	<b>1</b>	<b>5</b>	<b>-</b>	<b>-</b>	<b>27</b>	<b>12</b>	<b>12</b>	<b>2</b>	<b>9</b>	<b>68</b>

	1960	1961	1962
Canal Zone	5	7	5
Guam	3	2	2
Marianas Islands	-	-	-
Puerto Rico	85	71	60
Virgin Islands	-	-	-
Wake Island	-	2	1
Caroline Islands	-	-	-
<b>Totals</b>	<b>93</b>	<b>82</b>	<b>68</b>

Overseas Military	F		SM		M		A		Student	Total
	\$15	\$10	\$15	\$10	\$15	\$10	\$15	\$10		
P. O. San Francisco	-	14	2	123	92	26	24	17	17	298
P. O. Seattle	-	-	-	-	-	-	1	1	1	2
P. O. New York	-	19	2	192	127	46	29	27	27	442
<b>Totals</b>	<b>-</b>	<b>33</b>	<b>4</b>	<b>315</b>	<b>219</b>	<b>72</b>	<b>54</b>	<b>45</b>	<b>45</b>	<b>742</b>

	1960	1961	1962
P. O. San Francisco	194	258	298
P. O. Seattle	1	7	2
P. O. New York	348	343	442
<b>Totals</b>	<b>543</b>	<b>608</b>	<b>742</b>

Table 8 - 1962 Life Members, by Grade; 3-Year Comparison

	U. S.	Canadian	Other	Total
Fellow	117	1	7	125
Senior Member	96	3	11	110
Member	67	2	5	74
Associate	5	-	3	8
<b>Totals</b>	<b>285</b>	<b>6</b>	<b>26</b>	<b>317</b>

1960	224
1961	272
1962	317

SECTION A

Table 9 - 1962 Membership Changes, by Grade

GAINS	F		SM		M		A		S		Total
	\$15	\$10	\$15	\$10	\$15	\$10	\$15	\$10	\$15	\$10	
Elections	-	-	396	-	3,234	-	785	-	8,483	-	12,898
Reinstatements	-	-	103	-	1,044	-	421	-	166	-	1,734
Transfers to . .	154	-	438	-	2,999	-	672	-	-	-	4,263 *
<b>Total Gain</b>	<b>154</b>	<b>-</b>	<b>937</b>	<b>-</b>	<b>7,277</b>	<b>-</b>	<b>1,878</b>	<b>-</b>	<b>8,649</b>	<b>-</b>	<b>18,895</b>
<b>LOSSES</b>											
Transfers from . .	-	-	134	-	416	-	321	-	3,392	-	4,263 *
Voided Elections	-	-	-	-	16	-	14	-	-	-	30
Deceased	13	-	32	-	82	-	25	-	5	-	157
Resignations	-	-	36	-	546	-	154	-	223	-	959
Delinquents	2	-	193	-	1,834	-	970	-	3,483	-	6,482
<b>Total Loss</b>	<b>15</b>	<b>-</b>	<b>395</b>	<b>-</b>	<b>2,894</b>	<b>-</b>	<b>1,484</b>	<b>-</b>	<b>7,103</b>	<b>-</b>	<b>11,891</b>
<b>NET GAIN</b>	<b>139</b>	<b>-</b>	<b>542</b>	<b>-</b>	<b>4,383</b>	<b>-</b>	<b>394</b>	<b>-</b>	<b>1,546</b>	<b>-</b>	<b>7,004</b>

The net gain of 7,004 shown above compares with 8,072 for 1961.

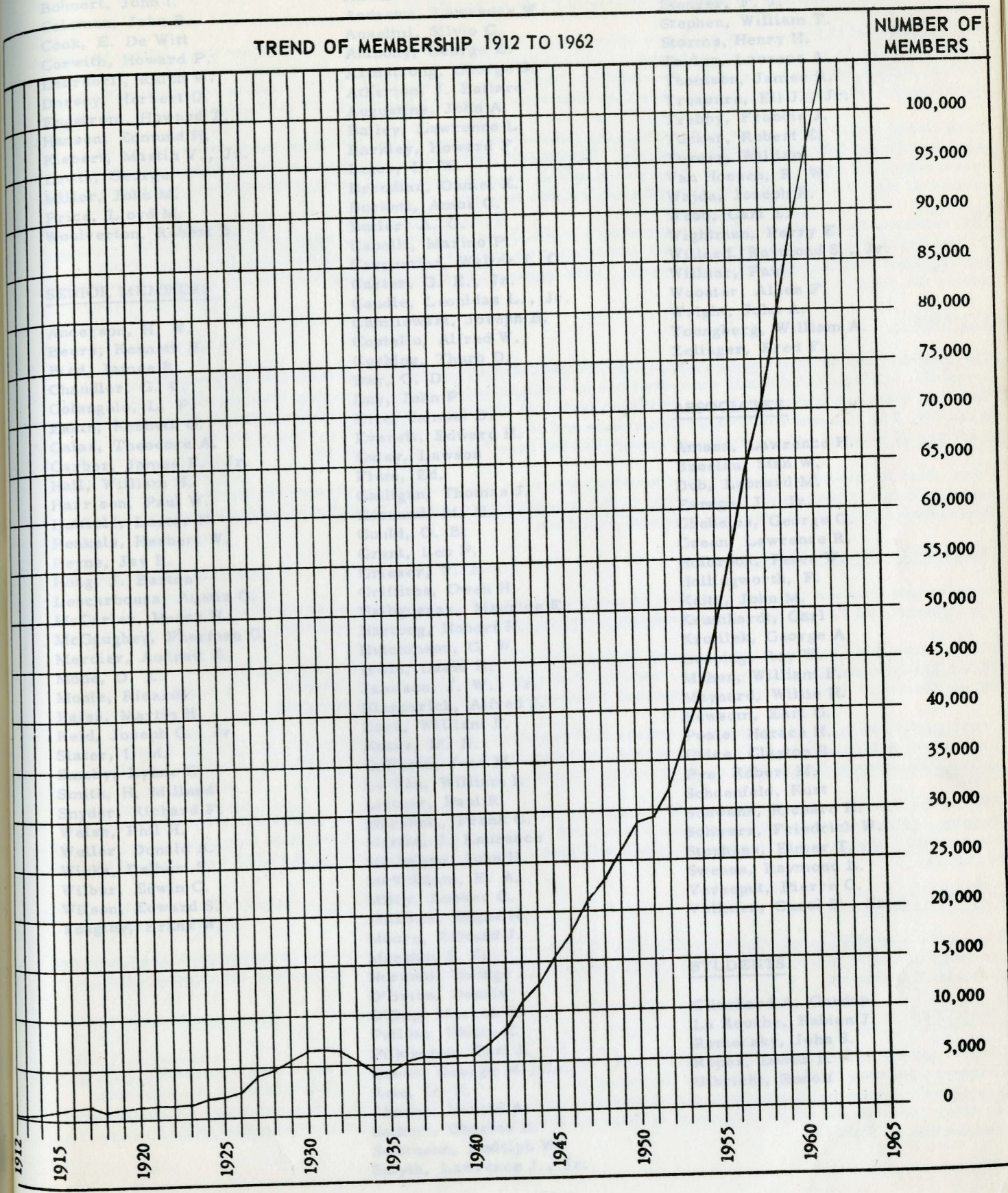
\* Analysis of Transfers, by Grade

Transfers from	SM	M	A	S	Total
Transfers to F	134	19	1	-	154
Transfers to SM	-	397	40	1	438
Transfers to M	-	-	280	2,719	2,999
Transfers to A	-	-	-	672	672
<b>Totals</b>	<b>134</b>	<b>416</b>	<b>321</b>	<b>3,392</b>	<b>4,263</b>

Table 10 - Membership by Grade, 1912 - 1962 -(Breakdown prior to 1931 not available)

Year	F	SM	M	A	J	S	Total
1912	-	-	-	-	-	-	109
1913	-	-	-	-	-	-	231
1914	-	-	-	-	-	-	633
1915	-	-	-	-	-	-	984
1916	-	-	-	-	-	-	1,193
1917	-	-	-	-	-	-	1,327
1918	-	-	-	-	-	-	822
1919	-	-	-	-	-	-	1,086
1920	-	-	-	-	-	-	1,285
1921	-	-	-	-	-	-	1,382
1922	-	-	-	-	-	-	1,242
1923	-	-	-	-	-	-	1,418
1924	-	-	-	-	-	-	2,053
1925	-	-	-	-	-	-	2,248
1926	-	-	-	-	-	-	2,730
1927	-	-	-	-	-	-	4,210
1928	-	-	-	-	-	-	4,823
1929	-	-	-	-	-	-	5,695
1930	-	-	-	-	-	-	6,535
1931	135	-	720	5,670	209	-	6,734
1932	147	-	711	5,231	199	115	6,403
1933	125	-	613	4,268	68	125	5,199
1934	115	-	551	3,320	25	229	4,240
1935	128	-	601	3,425	26	239	4,419
1936	133	-	637	4,092	34	299	5,195
1937	136	-	624	4,291	48	360	5,459
1938	156	-	645	4,250	38	314	5,403
1939	159	-	660	4,362	32	399	5,612
1940	175	-	700	4,314	20	496	5,705
1941	166	-	761	5,135	50	909	7,021
1942	168	-	833	6,205	55	1,533	8,794
1943	185	886	17	7,705	-	2,286	11,079
1944	184	1,025	337	9,508	-	2,083	13,137
1945	210	1,288	1,238	11,145	-	1,898	15,779
1946	218	1,763	2,330	11,591	-	2,252	18,154
1947	239	2,068	3,017	12,079	-	3,634	21,037
1948	259	2,192	3,334	11,713	-	5,939	23,437
1949	284	2,421	3,559	12,309	-	8,196	26,769
1950	323	2,726	3,803	14,590	-	7,560	29,002
1951	345	3,070	4,043	17,523	-	4,427	29,408
1952	379	3,566	4,617	20,029	-	4,283	32,874
1953	425	4,170	5,307	22,702	-	4,530	37,134
1954	489	4,780	6,107	24,846	-	5,556	41,778
1955	565	5,643	13,360	20,492	-	7,328	47,388
1956	635	6,486	19,110	18,879	-	10,384	55,494
1957	700	7,685	26,115	16,827	-	13,446	64,773
1958	770	8,536	32,373	14,721	-	14,961	71,361
1959	823	9,463	38,977	13,165	-	16,738	79,166
1960	896	10,001	47,114	12,806	-	17,662	88,479
1961	964	10,570	52,284	13,566	-	19,167	96,551
1962	1,103	11,112	56,667	13,960	-	20,713	103,555

THE INSTITUTE OF RADIO ENGINEERS, INC.



SECTION A

Table 11 - Deceased Members - 1962

FELLOWS

- Bohnert, John I.
- Coleman, John B.
- Cook, E. De Witt
- Corwith, Howard P.
- Deardorff, Ralph W.
- Dorsey, Herbert G.
- Engstrom, Howard T.
- Hansen, Edmund H.
- Kiebert, Martin V., Jr.
- Lewis, George
- Miller, John M.
- Price, Lloyd M.
- Woolverton, Robert B.

SENIOR MEMBERS

- Anderson, H. W.
- Beers, Kenneth H.
- Bird, James R.
- Chandler, G. C.
- Colangelo, L. P.
- Eakin, Kenneth G.
- Galas, Theodore A.
- Garber, James F., Jr.
- Hall, William H.
- Harrison, Paul W.
- Hatfield, Lester N.
- Henkels, Herbert W.
- Heyne, Jay B.
- Hoag, J. Barton
- Lescarbours, Austin C.
- McCarley, Henry H.
- McGaughey, Pherman C.
- Mercier, Andrew E.
- Mode, D. E.
- Muniz, Ricardo
- Paiss, Martin H.
- Reid, Joseph G., Jr.
- Slater, I. M.
- Smeby, Lynne C.
- Smith, H. Millard
- Snyder, Richard F.
- Weiss, Phil H.
- Weller, Donald A.
- Wicks, Delbert S.
- Wilbur, Edwin C.
- Wilson, Edward S.
- Yeagley, Frank W.

MEMBERS

- Allen, Richard S.
- Andrews, Lawrence W.
- Anselmi, Silvio C.
- Anthony, George E.
- Armstrong, George S.
- Atherton, J. Ballard
- Augustine, John A.
- Bailey, Lawrence L.
- Barkley, Howard F.
- Beier, L. W.
- Brendiar, Daniel E.
- Burkett, Amos C.
- Butler, A. G.
- Capelli, Marino P.
- Carpentier, Walter J. O.
- Carter, G. E., Jr.
- Caudle, Leonidas L., Jr.
- Chmilowski, Joseph B.
- Costello, Alfred W.
- Cushing, Thurb D.
- Day, G. D.
- Day, John P.
- Erie, Samuel D.
- Everett, Edward H.
- Exley, Lawson
- Flum, Ed.
- Galligan, Thomas J.
- Gernand, M. E.
- Gould, G. B.
- Grant, Leo P.
- Grieser, T. J.
- Griffiths, Owen H.
- Halbguerax, Maurice E.
- Hartong, Hobart H.
- Hutchinson, G. W.
- Irwin, David E.
- Jamison, J. W., Jr.
- Klapperich, Alfred J.
- Koch, William F.
- Kraus, M. B.
- LaPorte, Jean M.
- Le Van, William I.
- Leitner, Paul R.
- Marshall, Frank C.
- Martin, J. Laurance
- McGuigan, John H.
- McWilliam, E. A.
- Milby, Booker C.
- Milliken, Edgar N.
- Moore, Edward J.
- Morgan, S. G.
- Norcom, George J.
- O'Brien, Dennis
- O'Day, Marcus D.
- Pelline, Philip E.
- Pilkington, Earl J.
- Queen, George M., Jr.
- Reid, Irl H.
- Rhodes, Harold A.
- Seibert, Charles B.
- Selbmann, Rudolph W.
- Smyth, Lawrence J., Jr.

- Squire, Reginald K.
- Stenger, F. J.
- Stephen, William T.
- Storms, Henry H.
- Taylor, Laurens A.
- Thomson, James R.
- Treasure, Eli J., Jr.
- Treby, Francis J.
- Tucker, Robert E.
- Turner, William
- Van Hoesen, R. W.
- Wajda, Joseph P.
- Webb, Carl E.
- Wightman, Perry E.
- Willard, Raymond S., Jr.
- Willner, Paul
- Wooster, Alden F.
- Wright, John A.
- Youngberg, William A.
- Zelinger, Fred F.

ASSOCIATES

- Amann, Lawrence H.
- Breslau, Stan W.
- Dub, Leonard M.
- Farago, J., Jr.
- Ghebeles, George C.
- Green, Lawrence R.
- Holbrook, Peter W.
- Hollingworth, F.
- Keith, John M.
- Krumhardt, Carl
- Krutilek, George A.
- Leecing, Roy W.
- Maher, William F.
- Maynard, Willie H.
- Newsom, Earl G.
- Poole, Horace H.
- Price, Clayton R.
- Pye, Robert M.
- Schoenfeld, Kurt
- Schwank, Richard H.
- Schwarz, Friedrich W.
- Stephens, Elmer T.
- Swenns, Raymond L.
- Verseput, Pierre C.
- Vollmer, Carol B., Sr.

STUDENTS

- Clinchard A. Gordon
- La Rouche, Fabian J.
- Remeczky, John S.
- Ropes, David T.
- Ulbricht, Rudolf

## SECTION B

TABLE 1 - 1962 PROFESSIONAL GROUP ACTIVITIES

GENERAL:

During 1962, 29 Professional Groups operated actively within the IRE.

The majority of IRE members belong to one or more Professional Groups. The Professional Groups have a total membership of 93,778 which includes 7,206 IRE student members who have joined the Groups at the special student member rate of \$1.00 annually. Under the Affiliate Plan, 843 scientists and medical doctors, whose major interests lie in fields other than electronics have affiliated with 27 of the Professional Groups.

Each Group levies a fee on its membership for publication purposes and all Group members receive the pertinent Group TRANSACTIONS regularly. TRANSACTIONS of all Groups are subscribed to by companies, universities and public libraries. There is also a demand for individual Group subscriptions and requests for individual copies of the TRANSACTIONS from outside sources.

IRE rendered financial and editorial assistance to the Group publications in 1962. The Office of the Professional Groups Secretary provided administrative services for Group operations, including advance publicity and mailings for Group activities. This consisted of approximately 1000 mailings to Group members during the year.

SYMPOSIA:

The Professional Groups are responsible for the procurement of papers and management of national symposia. Groups individually sponsored one or more technical meetings during 1962, in addition to technical meetings during 1962, in addition to technical sessions at the IRE International Convention, the WESCON, The National Electronics Conference and other jointly sponsored meetings, for a total of 61 meetings of national and international import in 1962 (see Table 2 of Section B).

In an effort to minimize the number of meetings per year and to assist in reducing the general demand on man hours of industry personnel, many of the Group meetings have been successfully joined with those of other Professional Groups and other professional societies.

INTERNATIONAL ACTIVITIES:

In order that Professional Group activities may be expanded into international areas of interest, three of our Professional Groups have representation in the following international societies.

PG on Automatic Control -- International Federation of Automatic Control  
PG on Bio-Medical Electronics -- International Federation for Medical Electronics  
PG on Electronic Computers -- International Federation for Information Processing.

Group participation in international meetings held overseas included the symposium on Electromagnetic Theory and Antennas held in Copenhagen; the 2nd International Information Processing Congress in Munich; and an International Symposium on Information Theory in Brussels.

Five of the Groups -- The Professional Groups on: Antennas and Propagation, Circuit Theory, Information Theory, Instrumentation and Microwave Theory and Techniques co-sponsored the URSI Spring Meeting in Washington. Geoscience Electronics joined with these Groups in co-sponsoring the URSI Fall Meeting held in Ottawa.

PUBLICATIONS:

During the year 28 Groups published TRANSACTIONS, many of which included the proceedings of their national meetings in one or more issues. Full details on Group TRANSACTIONS are included in the report of the Editorial Department.

CHAPTERS:

Chapter growth is continuing at a healthy rate. At present there are a total of 308 active Professional Group Chapters operating in 58 IRE Sections (listing in Table 4 of Section B). 13 of these Chapters are joint with 2 or more sections and 21 are joint with 2 or more Groups. Most of the Chapters meet regularly and sponsor meetings covering the fields of interest of their associated Groups in the various Sections of IRE (see Section F, Table 3).

## SECTION B

TABLE 2 - NATIONAL TECHNICAL MEETINGS, 1962

Name of Meeting	Sponsoring Groups	Place	Date
8th Natl. Symposium on Reliability & Quality Control	PGRQC, AIEE, ASQC, EIA	Washington, DC	Jan. 9-11
Some Aspects of Aero-space Defense	ANE, IAS	New York, N. Y.	Jan. 24
3rd Winter Convention on Military Electronics	PGMIL, Los Angeles Section	Los Angeles, Cal.	Feb. 7-9
Internatl. Solid State Circuits Conference	PGCT, AIEE, Univ. of Pa. Philadelphia Section	Philadelphia, Pa.	Feb. 14-16
Winter Inst. on Optimum & Adaptive Control Systems Theory	Gainesville Section	Gainesville, Fla.	Feb. 19-24
8th Scintillation & Semi-Conductor Counter Symp.	PGNS, AIEE, AEC, NBS	Washington, DC.	Mar. 1-3
IRE Internatl. Convention	All PGs	New York, N. Y.	Mar. 26-29
3rd Symposium on Eng'g Aspects of Magnetohydrodynamics	PGNS, AIEE, IAS University of Rochester	Rochester, N. Y.	Mar. 28-29
Southwestern Regional Conference (SWIRECO)	Region 6	Dallas, Texas	Apr. 11-13
Symposium on Mathematical Theory of Automata	PGEC, PGIT, AIEE, PIB	New York, N. Y.	Apr. 24-26
Small Systems & Switching Applications for Transistors	Cincinnati Section	Cincinnati, Ohio	Apr. 28
URSI-IRE Spring Meeting	URSI, PGCT, PGAP, PGI, PGMTT, PGIT	Washington, DC.	Apr. 30 - May 3
Cleveland Electronics Conference	Cleveland Section	Cleveland, Ohio	May 1-3
Spring Joint Computer Conf.	PGEC, AIEE, ACM	San Francisco, Cal.	May 1-3
Internatl. Congress on Human Factors in Electronics	PGHFE	Long Beach, Cal.	May 3-4
Electronic Components Conference	PGCP, AIEE, EIA	Washington, DC.	May 8-10
Natl. Aerospace Electronics Conference (NAECON)	PGANE Dayton Section, IAS	Dayton, Ohio	May 14-16
Symposium on Thermionic Power Conversion	PGED, ANS, AIEE, AIME DOD, APS	Colorado Springs, Col.	May 14-17
PGMTT Natl. Symposium	PGMTT	Boulder, Colo.	May 22-24
Natl. Telemetry Conference	PGSET, AIEE, ISA, IAS, ARS	Washington, DC.	May 23-25
7th Region Conference on "Space Communications"	Region 7	Seattle, Wash.	May 24-26

Name of Meeting	Sponsoring Groups	Place	Date
3rd Spring Conference on Broadcast & TV Receivers	PGBTR Chicago Section	Chicago, Ill.	June 18-19
Symposium on Bio-Medical Electronics	PGBME, AIEE	San Diego, Cal.	June 19-21
6th Natl. Convention on Military Electronics	PGML	Washington, DC.	June 25-27
Symposium on Electro-magnetic Theory & Antennas	Tech. Univ. of Denmark URSI, PGAP	Copenhagen	June 25-30
Joint Automatic Control Conference	PGAC, ASME, ISA, AIEE AICHe	New York, N. Y.	June 27-29
Electron Devices Research Conference	Comm. 7 and AIEE	Minneapolis, Minn.	June 27-29
4th Natl. Radio Frequency Interference Symposium	PGRFI	San Francisco, Cal.	June 28-29
Conference on Data Acquisition & Processing in Medicine & Biology	PGBME, AIEE, ISA University of Rochester	Rochester, N. Y.	July 17-18
Workshop on Ultra High Speed Digital Computers	IRE, AIEE	Los Angeles, Cal.	Aug. 8-10
Internatl. Conference on Precision Electromagnetic Measurements	PGI, NBS, AIEE	Boulder, Colo.	Aug. 14-16
WESCON	All PGs, WCEMA, Los Angeles & San Francisco Sections	Los Angeles, Cal.	Aug. 21-24
2nd Internatl. Information Processing Congress	PGEC, IFIPS, AFIPS	Munich, Germany	Aug. 27 - Sept. 1
Natl. Advance Technology Management Conference	PGEM, AIEE, ASCE, AICHe	Seattle, Wash.	Sept. 3-7
Internatl. Symposium on Information Theory	PGIT, Benelux Section & Belgium Societies	Brussels, Belgium	Sept. 3-7
10th Annual Engineering Management Meeting	PGEM, AICHe, AIEE, ASME, ASCE, AIIE	New Orleans, La.	Sept. 13-14
6th Natl. Symposium on Engineering Writing and Speech	PGEWS	Washington, DC.	Sept. 13-14
Industrial Electronics Symposium	PGIE, AIEE, ISA	Chicago, Ill.	Sept. 19-20
Conference on Communications	Cedar Rapids Section	Cedar Rapids, Iowa	Sept. 21-22
12th Annual Symposium on Broadcasting	PGB	Washington, DC.	Sept. 28-29

Name of Meeting	Sponsoring Groups	Place	Date
8th Natl. Communications Symposium	PGCS Rome-Utica Section	Utica, N. Y.	Oct. 1-3
Natl. Symposium on Space Electronics & Telemetry	PGSET	Miami Beach, Fla.	Oct. 2-4
Natl. Electronics Conference	IRE, AIEE, Ill. Inst. of Technology, et al	Chicago, Ill.	Oct. 8-10
7th Annual Electronics Symposium	No. Carolina Section	Greensboro, N. C.	Oct. 12-13
URSI-IRE Fall Meeting	URSI, PGAP, PGI, PGCT, PGIT, PGGE, PGMTT	Ottawa, Canada	Oct. 15-17
8th Annual Nuclear Science Meeting on Space Phenomena and Measurements	PGNS	Detroit, Mich.	Oct. 15-18
Audio Eng. Soc. Conv.	PGA	New York, N. Y.	Oct. 15-19
3rd New York Conference on Electronic Reliability	PGRQC, PGPEP, PGCP	Hoboken, N. J.	Oct. 19
East Coast Conference on Aerospace & Navigational Electronics (ECCANE)	PGANE Baltimore Section	Baltimore, Md.	Oct. 22-24
Electron Devices Meeting	PGED	Washington, DC.	Oct. 25-27
3rd Annual Seminar on Reliability in Space Vehicles	PGCP, PGRQC, PGED	Los Angeles, Cal.	Oct. 26
Conference on Spaceborne Computer Eng'g.	PGEC	Anaheim, Cal.	Oct. 30-31
Tri-Service Conference on Electromagnetic Compatibility	PGRFI Armour Res. Found. & Armed Services	Chicago, Ill.	Oct. 30 - Nov. 1
6th Annual Conference on Product Engineering & Production	PGPEP	San Francisco, Cal.	Nov. 1-2
15th Annual Conference on Engineering in Medicine & Biology	PGBME, AIEE, ISA	Chicago, Ill.	Nov. 4-7
Northeast Research & Eng'g. Meeting (NEREM)	Region 1	Boston, Mass.	Nov. 5-7
Radio Fall Meeting	PGED, PGBTR, PGRQC, EIA	Toronto, Canada	Nov. 12-14
8th Conference on Magnetism & Magnetic Materials	PGMTT, AIEE, AIP	Pittsburgh, Pa.	Nov. 12-15
2nd IRE Canadian Communications Conference	Montreal Section	Montreal, Canada	Nov. 16-17



TABLE 3 - 1962, PROFESSIONAL GROUP MEMBERSHIP, 5 - YEAR COMPARISON

SECTION B		Paid Membership Only							
		1958	1959	1960	1961	Student Discount	Student Regular	Other Members	Total
G-1	Audio	4,348	5,403	4,551	4,193	370	301	3,734	4,405
G-2	Broadcasting	1,275	1,598	1,481	1,403	68	64	1,392	1,524
G-3	Antennas & Propagation	3,117	3,772	4,213	3,804	564	28	3,525	4,117
G-4	Circuit Theory	6,690	7,932	7,523	6,803	979	186	5,933	7,098
G-5	Nuclear Science	1,587	1,869	1,718	1,590	172	73	1,388	1,633
G-6	Vehicular Communications	1,229	1,442	1,487	1,483	42	36	1,528	1,606
G-7	Reliability	1,455	1,790	1,712	1,913	49	29	2,023	2,101
G-8	Broadcast & Television Receivers	1,915	1,874	1,940	1,676	276	45	1,447	1,768
G-9	Instrumentation & Measurement	3,710	4,323	4,070	3,677	105	123	3,636	3,864
G-10	Space Electronics & Telemetry	2,766	3,625	3,997	4,179	307	185	4,201	4,693
G-11	Aerospace & Navigational Electronics	3,124	3,752	3,487	3,206	165	114	3,187	3,466
G-12	Information Theory	2,796	3,342	3,542	3,481	248	121	3,548	3,917
G-13	Industrial Electronics	1,894	2,128	1,977	1,769	147	64	1,710	1,921
G-14	Engineering Management	4,024	4,509	4,518	4,315	177	76	4,270	4,523
G-15	Electron Devices	4,221	5,043	5,572	5,282	464	162	4,797	5,423
G-16	Electronic Computers	7,505	8,808	9,231	9,352	1,336	197	8,363	9,896
G-17	Microwave Theory & Techniques	4,034	5,160	5,547	5,549	419	251	5,299	5,969
G-18	Bio-Medical Electronics	1,711	2,134	2,344	2,771	345	128	2,497	2,970
G-19	Communications Systems	2,591	3,265	3,750	4,003	271	227	3,975	4,473
G-20	Ultrasonics Engineering	782	955	985	868	9	67	889	965
G-21	Component Parts	1,648	1,882	1,881	1,763	38	31	1,865	1,934
G-22	Product Engineering & Production	889	1,115	1,157	1,112	16	33	1,175	1,224
G-23	Automatic Control	3,233	3,963	4,044	4,055	367	230	3,672	4,269
G-24	Military Electronics	3,395	3,907	4,291	4,415	132	132	4,548	4,812
G-25	Education	461	749	834	893	24	33	1,004	1,061
G-26	Engineering Writing & Speech	1,044	1,570	1,717	1,752	86	76	1,635	1,797
G-27	Radio Frequency Interference	387	690	922	1,061	10	19	1,170	1,199
G-28	Human Factors in Electronics	210	427	623	692	15	44	706	765
G-29	Geoscience Electronics				*	5	11	369	385
Totals		72,041	87,027	89,114	87,060	7,206	3,086	83,486	93,778

\* No fees levied

TABLE 4 - 1962, AFFILIATES BY GROUP; 5 - YEAR COMPARISON

SECTION B		1958	1959	1960	1961	1962
G-1	Audio	5	6	6	6	4
G-2	Broadcasting	-	-	-	-	-
G-3	Antennas & Propagation	1	2	3	4	3
G-4	Circuit Theory	2	4	4	5	5
G-5	Nuclear Science	9	10	27	33	78
G-6	Vehicular Communications	1	1	1	1	1
G-7	Reliability	21	42	40	54	57
G-8	Broadcast & Television Receivers	-	-	-	-	1
G-9	Instrumentation & Measurement	2	5	3	4	3
G-10	Space Electronics & Telemetry	1	1	-	2	2
G-11	Aerospace & Navigational Electronics	-	2	3	5	4
G-12	Information Theory	16	29	27	31	41
G-13	Industrial Electronics	-	-	-	-	0
G-14	Engineering Management	3	1	4	32	45
G-15	Electron Devices	8	8	12	18	8
G-16	Electronic Computers	55	66	68	105	149
G-17	Microwave Theory & Techniques	2	2	7	8	6
G-18	Bio-Medical Electronics	104	167	205	296	326
G-19	Communications Systems	-	1	-	1	1
G-20	Ultrasonics Engineering	7	4	5	6	5
G-21	Component Parts	-	1	1	2	2
G-22	Product Engrg. & Production	2	7	8	8	8
G-23	Automatic Control	9	12	11	13	15
G-24	Military Electronics	9	5	4	3	3
G-25	Education	4	12	10	7	8
G-26	Engineering Writing & Speech	18	28	30	30	33
G-27	Radio Frequency Interference	-	3	5	6	12
G-28	Human Factors in Electronics	-	2	19	22	22
G-29	Geoscience Electronics	-	-	-	-	1
Totals		279	421	503	702	843

TABLE 5 - 1962, PERCENTAGE CHANGES IN GROUP MEMBERSHIP BY GROUP; 2-YEAR COMPARISON

SECTION B		1962 Percentage Increase Over 1961
G-25	Education	19
G-27	Radio Frequency Interference	13
G-12	Information Theory	12
G-10	Space Electronics & Telemetry	12
G-19	Communications Systems	12
G-20	Ultrasonics Engineering	11
G-28	Human Factors in Electronics	10
G-22	Product Engineering & Production	10
G-7	Reliability	10
G-21	Component Parts	10
G-24	Military Electronics	9
G-2	Broadcasting	9
G-13	Industrial Electronics	9
G-6	Vehicular Communications	8
G-3	Antennas & Propagation	8
G-11	Aerospace & Navigational Electronics	8
G-17	Microwave Theory & Techniques	8
G-18	Bio-Medical Electronics	7
G-16	Electronic Computers	6
G-8	Broadcast & Television Receivers	5
G-9	Instrumentation & Measurement	5
G-23	Automatic Control	5
G-1	Audio	5
G-14	Engineering Management	5
G-4	Circuit Theory	4
G-5	Nuclear Science	3
G-15	Electron Devices	3
G-26	Engineering Writing & Speech	3
1961 Percentage Increase Over 1960		
G-18	Bio-Medical Electronics	18
G-27	Radio Frequency Interference	15
G-7	Reliability	12
G-28	Human Factors in Electronics	11
G-25	Education	7
G-19	Communications Systems	7
G-10	Space Electronics & Telemetry	7
G-24	Military Electronics	5
G-26	Engineering Writing & Speech	3
G-16	Electronic Computers	2
G-23	Automatic Control	1
G-17	Microwave Theory & Techniques	-
G-6	Vehicular Communications	-
G-12	Information Theory	Minus 2
G-22	Product Engineering & Production	" 4
G-14	Engineering Management	" 4
G-2	Broadcasting	" 5
G-15	Electron Devices	" 5
G-21	Component Parts	" 6
G-5	Nuclear Science	" 7
G-11	Aerospace & Navigational Electronics	" 8
G-1	Audio	" 8
G-3	Antennas & Propagation	" 10
G-4	Circuit Theory	" 10
G-9	Instrumentation & Measurement	" 10
G-13	Industrial Electronics	" 10
G-20	Ultrasonics Engineering	" 12
G-8	Broadcast & Television Receivers	" 14

SECTION B

Table 6  
PROFESSIONAL GROUP CHAPTERS

Established as of December 31, 1962.

Group Code No.	Name of Group	No. of Chapters	Section Location	
G-11	Aerospace & Navigational Electronics	9	Akron Baltimore Boston Dayton Fla. West Coast	Los Angeles Met. NY, NNJ, LI Oklahoma City Philadelphia
G-3	Antennas & Propagation	23	Akron Alb. - Los Alamos Baltimore Boston Buffalo-Niagara Central Penna. Chicago Columbus Dayton Denver Boulder Detroit Los Angeles	Long Island Montreal Orange Belt Philadelphia San Diego San Francisco Santa Ana Seattle Syracuse Toronto Wash., D. C.
G-1	Audio	17	Alb. - Los Alamos Baltimore Boston Chicago Cincinnati Cleveland Dayton Houston Milwaukee	Montreal Omaha-Lincoln Philadelphia San Antonio San Diego San Francisco Twin Cities Washington, D. C.
G-23	Automatic Control	15	Akron Baltimore Boston Chicago Dallas-Ft. Worth Long Island Los Angeles Milwaukee	New York North New Jersey Philadelphia Pittsburgh San Francisco Schenectady Twin Cities
G-18	Bio-Medical Electronics	21	Baltimore Boston Buffalo-Niagara Chicago Cleveland Columbus Houston Omaha-Lincoln Philadelphia Portland Rochester	Los Angeles Memphis (Huntsville) Milwaukee Montreal Met. NY, NNJ, LI Princeton North Carolina San Diego San Francisco Twin Cities Washington, D. C.
G-2	Broadcasting	11	Cleveland Fla. West Coast Houston Montreal Omaha-Lincoln Philadelphia	Pittsburgh San Francisco Twin Cities Vancouver Washington, D. C.

Group Code No.	Name of Group	No. of Chapters	Section Location	
G-8	Broadcast & Television Receivers	4	Chicago Indianapolis	Omaha-Lincoln Philadelphia
G-4	Circuit Theory	11	Alb. - Los Alamos Chicago Cleveland Houston Los Angeles Omaha-Lincoln	Philadelphia San Antonio San Francisco Seattle Syracuse
G-19	Communications Systems	16	Baltimore Boston Chicago Dallas Denver Fla. West Coast Monmouth No. New Jersey	Oklahoma City Omaha-Lincoln Philadelphia Rome-Utica San Francisco Syracuse Toronto Washington, D. C.
G-21	Component Parts	9	Baltimore Chicago Dayton Houston Los Angeles	Met. NY, NNJ, LI Omaha-Lincoln Philadelphia Washington, DC.
G-25	Education	1	Salt Lake City	
G-15	Electron Devices	12	Alb. - Los Alamos Boston Detroit Los Angeles Met. NY, NNJ, LI Omaha-Lincoln Philadelphia	Pittsburgh San Francisco Schenectady Syracuse Washington, D. C.
G-16	Electronic Computers	23	Akron Baltimore Binghamton Dayton Detroit Houston Long Island Los Angeles NY, NNJ, & Conn. Omaha-Lincoln Philadelphia	Boston Chicago Dallas-Ft. Worth Phoenix Pittsburgh Rome-Utica Salt Lake City Santa Ana San Francisco Syracuse Twin Cities Washington, D. C.
G-14	Engineering Management	16	Baltimore Binghamton Boston Buenaventura Chicago Dayton Houston Los Angeles	NY, NNJ, LI Philadelphia Rome-Utica San Francisco Seattle Syracuse Twin Cities Washington, D. C.
G-26	Engineering Writing & Speech	10	Boston Chicago Detroit Los Angeles No. New Jersey	Philadelphia San Francisco Syracuse Twin Cities Washington, D. C.

Group Code No.	Name of Group	No. of Chapters	Section Location	
G-29	Geoscience Electronics	1	Houston	
G-28	Human Factors in Electronics	1	Los Angeles	
G-13	Industrial Electronics	4	Chicago Cleveland	Omaha-Lincoln Schenectady
G-12	Information Theory	8	Baltimore Boston Buffalo-Niagara Los Angeles	Omaha-Lincoln San Francisco Syracuse Washington, D. C.
G-9	Instrumentation & Measurement	10	Atlanta Boston Chicago Houston Long Island	Los Angeles Miami Philadelphia San Francisco Washington, D. C.
G-17	Microwave Theory & Techniques	27	Alb. -Los Alamos Baltimore Boston Buffalo-Niagara Chicago Los Angeles Montreal New York No. New Jersey Omaha-Lincoln Orange Belt Philadelphia San Diego	Columbus Denver-Boulder Detroit Fla. West Coast Long Island San Francisco Santa Ana Schenectady Seattle Syracuse Tokyo Toronto Washington, D. C.
G-24	Military Electronics	21	Baltimore Boston Canaveral Chicago Dayton Detroit Jt. Ft. Huachuca Phoenix, Tucson Indianapolis Long Island	Los Angeles Northwest Fla. Omaha-Lincoln Ottawa Philadelphia Rochester Rome-Utica San Diego San Francisco So. Carolina Syracuse Washington, D. C.
G-5	Nuclear Science	8	Albuquerque Chicago Conn. Dayton	Los Alamos Los Angeles Omaha-Lincoln Washington, D. C.
G-22	Product Engineering & Production	6	Boston Los Angeles NY, NNJ, LI	Philadelphia San Francisco Washington, D. C.

Group Code No.	Name of Group	No. of Chapters	Section Location	
G-27	Radio Frequency Interference	11	Canaveral Chicago Dayton Ft. Worth Los Angeles NY, NNJ, LI	Philadelphia Rome-Utica San Francisco Seattle Washington, D. C.
G-7	Reliability	11	Binghamton Boston Chicago Columbus Fla. West Coast Fort Worth	Los Angeles NY, NNJ, LI Philadelphia San Francisco Washington, D. C.
G-10	Space Electronics & Telemetry	12	Albuquerque Canaveral Chicago Dayton Philadelphia San Diego	Denver Huntsville Los Angeles Orlando San Francisco Washington, D. C.
G-6	Vehicular Communications	12	Chicago Dallas Detroit Fla. West Coast Houston Los Angeles	NY, NNJ, LI Omaha-Lincoln Philadelphia Toronto Twin Cities Washington, D. C.
28 Groups		308 Chapters		58 Sections

1962 Professional Group Membership, by Group, by Region, by Section

REGION	SECTION	G-1	G-2	G-3	G-4	G-5	G-6	G-7	G-8	G-9	G-10	G-11	G-12	G-13	G-14	G-15	G-16	G-17	G-18	G-19	G-20	G-21	G-22	G-23	G-24	G-25	G-26	G-27	G-28	G-29	TOTAL
I	Binghamton	14	5	5	36	2	4	34	5	14	11	18	7	6	20	12	104	10	6	6	3	9	3	15	19	3	5	4	4	2	386
	Boston	262	60	328	501	82	69	172	89	316	248	229	438	127	329	465	715	618	222	254	72	134	109	306	298	78	123	57	57	14	6,772
	Buffalo-Niagara	19	17	30	38	9	8	14	12	23	35	44	39	6	33	32	36	51	30	44	3	15	5	31	51	6	6	10	4	1	652
	Connecticut	90	20	45	117	30	14	31	26	65	61	47	49	40	79	84	179	58	46	62	34	29	22	79	53	14	29	18	14	8	1,443
	Elmira-Corning	6	4	3	6	4	1	4	8	8	3	3	-	6	3	41	8	18	3	3	1	10	2	5	2	2	1	1	-	-	156
	Erie	5	-	-	7	1	-	1	3	3	-	1	2	4	1	3	6	3	2	2	5	3	-	3	-	-	-	-	-	-	55
	Ithaca	8	1	16	32	2	-	1	2	5	2	3	22	1	3	24	19	19	3	7	-	-	-	14	2	4	1	1	-	-	192
	Rochester	42	7	13	59	8	7	13	19	21	14	16	17	16	39	39	52	22	38	40	8	15	8	26	22	7	11	3	1	-	583
	Rome-Utica	18	5	26	24	5	5	19	8	5	18	23	28	2	48	8	50	36	8	47	4	9	8	12	57	4	10	19	4	1	511
	Schenectady	11	9	18	35	14	8	5	13	25	12	16	19	24	19	50	53	42	16	16	5	18	4	35	14	8	5	6	1	-	501
	Syracuse	49	27	52	94	11	9	24	23	20	39	34	82	8	98	94	114	87	23	59	9	25	7	39	147	23	37	12	8	1	1,255
	Western Massachusetts	<u>11</u>	<u>5</u>	<u>1</u>	<u>22</u>	<u>4</u>	<u>2</u>	<u>3</u>	<u>9</u>	<u>5</u>	<u>4</u>	<u>3</u>	<u>5</u>	<u>2</u>	<u>10</u>	<u>8</u>	<u>28</u>	<u>4</u>	<u>5</u>	<u>3</u>	<u>5</u>	<u>12</u>	<u>3</u>	<u>7</u>	<u>9</u>	<u>4</u>	<u>9</u>	<u>8</u>	<u>1</u>	<u>-</u>	<u>192</u>
		535	160	537	971	172	127	321	217	510	447	437	708	242	682	860	1364	968	402	543	149	279	171	572	674	153	237	139	94	27	12,698
	II	Long Island	191	52	198	370	76	55	105	80	185	195	239	198	78	214	218	437	417	135	206	37	91	62	215	300	35	95	82	40	11
New York		259	102	184	437	77	62	95	99	157	155	149	257	105	217	287	878	326	223	315	52	108	61	176	219	55	110	64	53	9	5,291
Northern New Jersey		141	45	122	325	47	64	97	86	149	149	181	167	86	183	283	367	276	104	280	44	103	47	169	197	25	90	36	48	9	3,920
Princeton		<u>43</u>	<u>12</u>	<u>31</u>	<u>85</u>	<u>24</u>	<u>13</u>	<u>13</u>	<u>28</u>	<u>40</u>	<u>53</u>	<u>23</u>	<u>41</u>	<u>15</u>	<u>30</u>	<u>110</u>	<u>107</u>	<u>55</u>	<u>30</u>	<u>46</u>	<u>7</u>	<u>13</u>	<u>12</u>	<u>46</u>	<u>29</u>	<u>7</u>	<u>17</u>	<u>8</u>	<u>2</u>	<u>4</u>	<u>944</u>
	634	211	535	1217	224	194	310	293	531	552	592	663	284	644	898	1789	1074	492	847	140	315	182	606	745	122	312	190	143	33	14,772	
III	Atlanta	36	19	32	36	23	10	4	16	22	27	20	13	9	18	17	35	21	14	32	3	2	3	16	17	6	7	18	4	-	480
	Baltimore	70	21	98	156	10	16	30	19	52	87	81	85	13	99	88	158	152	43	73	10	26	6	72	127	16	30	34	11	8	1,691
	Canaveral	15	1	29	18	3	3	6	3	33	91	28	23	3	32	8	41	19	14	20	-	-	2	13	51	2	12	16	1	1	488
	Florida West Coast	15	15	11	25	6	21	23	3	19	33	19	11	5	26	12	36	49	14	26	3	7	5	14	38	1	10	8	4	1	460
	Gainesville	4	1	3	11	6	1	2	2	2	4	4	9	-	4	34	10	19	6	3	-	1	2	3	4	5	1	-	-	-	141
	Huntsville	31	7	20	35	6	5	9	3	33	49	9	11	11	19	16	41	16	23	13	4	5	5	35	23	6	11	3	-	2	451
	Miami	18	8	5	9	5	7	7	3	18	15	13	1	5	10	5	21	4	17	8	4	4	4	5	8	6	3	2	3	3	221
	Mobile	-	1	1	-	-	-	-	-	1	1	-	-	1	2	-	-	1	-	4	-	-	-	-	4	-	-	1	-	-	17
	North Carolina	25	22	12	22	6	12	10	7	16	6	7	7	9	12	8	25	18	31	18	4	9	3	6	30	7	8	2	1	-	343
	Northwest Florida	10	3	7	4	2	3	2	3	5	13	6	1	-	6	4	9	4	2	2	1	-	-	3	17	1	3	3	-	-	114
	Orlando	12	-	16	20	5	7	5	2	21	39	15	12	5	17	12	38	36	5	20	4	5	4	16	30	-	8	8	-	-	362
	Philadelphia	218	77	153	346	61	56	134	84	177	262	176	210	53	235	257	658	237	155	238	39	126	162	175	265	32	113	52	28	13	4,792
	South Carolina	4	3	6	4	1	8	1	3	5	4	3	5	4	3	2	6	3	3	4	3	4	2	6	14	-	1	1	-	-	103
	Virginia	29	11	25	23	10	35	6	6	18	28	24	11	11	27	20	34	34	9	32	3	4	3	16	31	6	11	10	1	1	479
	Washington	<u>171</u>	<u>93</u>	<u>272</u>	<u>249</u>	<u>70</u>	<u>82</u>	<u>86</u>	<u>51</u>	<u>203</u>	<u>300</u>	<u>173</u>	<u>207</u>	<u>47</u>	<u>258</u>	<u>191</u>	<u>420</u>	<u>249</u>	<u>114</u>	<u>292</u>	<u>33</u>	<u>64</u>	<u>35</u>	<u>120</u>	<u>392</u>	<u>27</u>	<u>88</u>	<u>113</u>	<u>39</u>	<u>23</u>	<u>4,462</u>
		658	282	690	958	214	266	325	205	625	959	578	606	176	768	674	1532	862	450	785	111	257	236	500	1051	115	306	271	92	52	14,604

REGION	SECTION	G-1	G-2	G-3	G-4	G-5	G-6	G-7	G-8	G-9	G-10	G-11	G-12	G-13	G-14	G-15	G-16	G-17	G-18	G-19	G-20	G-21	G-22	G-23	G-24	G-25	G-26	G-27	G-28	G-29	TOTAL
IV	Akron	16	9	20	17	2	5	1	3	8	5	18	10	12	11	10	39	12	7	14	1	3	4	23	10	-	4	3	4	-	271
	Central Pennsylvania	8	3	26	23	3	4	4	8	9	17	15	21	2	10	10	15	19	8	13	5	4	1	8	22	5	7	2	3	2	277
	Cincinnati	38	8	13	28	4	10	3	9	8	11	12	10	3	9	10	21	15	8	14	2	7	2	17	18	2	5	2	1	-	290
	Cleveland	40	23	15	42	21	9	8	9	41	19	5	12	51	17	28	48	17	34	13	12	15	11	41	7	5	8	5	4	-	560
	Columbus	21	6	75	32	11	9	18	4	24	17	19	20	19	29	48	54	73	20	14	3	6	5	39	26	7	11	6	3	3	622
	Dayton	34	6	30	32	17	12	43	9	28	41	89	25	11	132	24	82	24	23	30	5	26	7	18	73	7	21	10	11	2	872
	Detroit	68	21	71	134	28	36	18	12	66	70	38	84	33	46	77	188	100	47	50	15	15	9	72	36	29	26	9	11	2	1,411
	Emporium	1	2	-	2	1	1	6	4	-	2	-	-	-	1	13	10	1	2	-	6	12	3	1	2	1	-	-	-	-	71
	Pittsburgh	52	26	21	62	41	25	11	16	38	21	15	25	31	35	84	74	25	20	26	14	13	7	64	20	14	6	7	4	2	799
	Toledo	15	3	2	2	1	4	-	4	5	5	4	1	8	5	6	12	2	-	3	1	4	-	3	4	-	-	1	-	-	95
	Western Michigan	11	1	3	5	1	3	4	5	2	-	4	1	2	5	-	4	1	4	5	-	-	-	3	1	1	-	-	1	-	67
	Williamsport	2	1	3	4	-	-	1	1	-	-	1	2	-	3	7	2	5	1	1	-	-	1	-	1	3	-	-	-	1	40
		306	109	279	383	130	118	117	84	229	208	220	211	172	303	317	549	294	174	183	64	105	50	289	220	74	88	45	42	12	5,375
V	Cedar Rapids	33	14	10	49	12	8	11	9	9	20	33	17	5	26	18	44	21	21	30	-	10	1	19	7	11	18	4	4	2	466
	Chicago	233	36	137	253	73	131	60	177	112	122	72	106	98	261	133	260	157	100	138	36	70	24	122	105	23	66	40	12	4	3,161
	Evansville-Owensboro	6	3	4	5	1	2	3	5	5	2	-	-	3	9	11	3	2	3	2	-	2	1	1	2	1	3	-	-	-	79
	Fort Wayne	11	2	6	10	1	6	1	7	-	7	4	1	1	8	3	9	6	9	11	3	3	3	7	15	1	4	-	1	2	142
	Indianapolis	44	6	18	47	5	13	14	38	8	10	17	20	14	28	39	49	23	17	31	5	13	8	51	22	10	9	1	1	-	561
	Louisville	11	6	5	6	-	4	2	1	4	1	3	-	6	2	4	8	7	5	6	3	1	2	6	1	2	1	2	2	-	101
	Milwaukee	41	16	10	51	14	14	14	14	27	20	19	19	20	20	30	69	19	25	21	3	16	5	54	10	14	6	4	6	1	582
	Omaha-Lincoln	9	19	7	11	6	12	5	9	4	11	4	2	8	8	3	27	10	19	13	2	12	4	5	9	3	3	-	-	1	226
	South Bend-Mishawaka	17	3	4	12	2	1	4	4	6	8	4	6	7	8	1	5	7	3	4	1	3	2	11	2	-	3	-	-	1	129
	Twin Cities	65	33	11	95	14	28	25	12	48	27	36	30	23	64	61	228	26	54	26	10	26	11	67	39	7	34	4	7	1	1,112
		470	138	212	539	128	219	139	276	223	228	192	201	185	434	303	702	278	256	282	63	156	61	343	212	72	147	55	33	12	6,559

REGION	SECTION	G-1	G-2	G-3	G-4	G-5	G-6	G-7	G-8	G-9	G-10	G-11	G-12	G-13	G-14	G-15	G-16	G-17	G-18	G-19	G-20	G-21	G-22	G-23	G-24	G-25	G-26	G-27	G-28	G-29	TOTAL
VI	Beaumont-Port Arthur	3	3	1	4	2	3	-	1	-	-	-	-	2	1	-	5	1	-	-	-	-	-	-	-	3	-	-	-	29	
	Dallas	78	22	56	126	22	34	44	29	51	76	50	49	23	78	103	96	90	34	64	18	36	12	34	62	14	25	11	10	46	1,393
	Denver	34	15	72	40	14	9	7	10	63	57	18	22	11	30	24	49	59	26	43	6	8	10	23	31	12	14	9	3	2	721
	El Paso	11	4	14	14	5	8	-	3	10	26	4	4	1	10	7	20	11	4	7	1	-	-	3	16	2	9	4	1	1	200
	Fort Worth	9	4	9	19	5	6	6	4	15	11	15	12	7	8	8	30	13	5	6	3	3	2	16	10	1	5	6	-	2	240
	Houston	50	13	14	39	21	22	5	3	57	36	16	21	20	29	15	64	9	30	19	9	14	5	23	11	10	7	4	6	69	641
	Kansas City	21	9	21	24	13	6	6	10	21	14	25	14	7	18	11	37	22	21	17	6	8	5	15	9	3	13	4	4	1	385
	Little Rock	7	1	1	3	1	-	-	2	2	3	4	-	2	1	2	4	2	1	4	-	-	-	-	1	1	1	-	1	-	44
	Lubbock	5	5	1	1	1	3	-	-	1	-	1	-	-	-	1	1	1	-	2	-	-	-	-	-	1	-	-	-	-	24
	New Orleans	12	8	11	12	5	8	1	4	9	14	9	5	4	4	9	17	7	12	11	3	-	1	5	13	5	3	6	1	4	203
	Oklahoma City	14	8	4	12	2	4	3	2	6	6	22	7	4	7	5	10	6	5	16	1	3	1	3	10	6	5	2	1	1	176
	Saint Louis	30	8	20	38	3	6	17	5	19	35	29	17	7	22	15	46	25	30	17	1	4	7	42	33	8	11	5	2	-	502
	San Antonio-Austin	24	12	22	29	3	4	2	3	17	12	12	13	3	5	18	21	12	23	16	5	2	2	11	14	8	3	3	2	17	318
	Shreveport	5	1	3	2	1	5	1	2	2	1	4	1	1	1	1	4	2	2	4	1	1	-	2	6	2	2	1	1	-	59
	Tulsa	8	7	5	16	4	6	3	5	12	11	7	3	8	4	4	22	3	5	4	4	4	2	10	4	5	1	3	-	15	185
	Wichita	8	3	11	7	1	1	2	-	7	3	7	5	-	4	5	6	15	2	1	2	2	1	7	14	-	1	-	3	-	118
		319	123	265	386	103	125	97	83	292	305	223	173	100	222	228	432	278	200	231	60	85	48	194	234	78	103	58	35	158	5,238
VII	Alamogordo-Holloman	2	-	4	1	2	-	2	1	6	14	2	2	-	8	-	11	1	6	2	-	-	-	8	7	-	3	-	1	-	83
	Albuquerque-Los Alamos	30	3	21	34	52	4	13	3	35	54	3	15	3	17	34	34	26	12	6	5	5	1	18	7	5	8	2	3	-	453
	Anchorage	5	3	6	3	-	2	1	1	1	7	5	2	-	2	1	6	3	-	9	1	-	1	2	2	-	3	5	-	-	71
	China Lake	5	-	5	8	-	-	1	1	6	12	2	-	-	3	1	5	3	2	2	1	2	1	4	8	-	1	-	1	-	74
	Fort Huachuca	1	1	4	1	-	1	-	-	1	2	4	-	-	3	-	5	-	1	6	-	-	-	1	13	-	2	4	-	-	50
	Hawaii	9	2	7	12	2	4	-	2	7	8	4	4	1	5	4	14	9	3	14	-	2	1	2	9	4	2	5	1	-	137
	Las Vegas	2	-	4	-	8	-	1	1	3	6	2	1	1	3	2	4	3	2	2	-	-	-	1	2	-	-	-	-	-	48
	Los Angeles	442	88	513	944	161	125	305	141	564	909	530	513	159	645	665	1653	715	305	440	96	268	162	727	724	176	222	156	146	55	12,549
	Phoenix	18	3	28	47	7	14	19	7	19	27	31	24	8	31	52	109	62	16	32	5	22	8	33	33	5	17	9	4	-	690
	Portland	24	7	9	24	8	9	5	2	22	12	5	9	5	9	38	32	15	21	21	-	5	5	9	6	9	7	6	5	1	330
	Sacramento	13	12	12	10	5	11	4	8	12	6	5	2	7	8	5	15	7	3	9	3	3	3	2	9	6	7	5	-	-	192
	Salt Lake City	11	3	8	18	8	5	6	1	16	13	4	3	1	6	20	25	14	4	3	1	4	1	11	9	9	7	3	-	-	214
	San Diego	62	9	50	69	21	8	27	10	55	97	53	38	13	48	54	105	61	43	29	7	14	12	52	70	6	22	5	6	3	1,049
	San Francisco	234	66	267	490	102	70	108	68	236	357	125	234	72	299	555	579	527	156	264	38	73	83	255	248	53	88	58	30	17	5,752
	Seattle	59	18	90	108	32	22	24	10	48	77	48	43	10	59	53	95	84	35	55	13	14	5	64	57	13	23	32	9	4	1,204
	Tucson	11	2	17	28	-	8	3	3	10	15	14	14	3	22	12	20	18	7	17	-	3	4	14	18	2	3	15	3	1	287
		928	217	1045	1797	408	283	519	259	1041	1616	837	904	283	1168	1496	2712	1548	616	911	170	415	287	1203	1222	288	415	305	209	81	23,183

REGION	SECTION	G-1	G-2	G-3	G-4	G-5	G-6	G-7	G-8	G-9	G-10	G-11	G-12	G-13	G-14	G-15	G-16	G-17	G-18	G-19	G-20	G-21	G-22	G-23	G-24	G-25	G-26	G-27	G-28	G-29	TOTAL	
VIII	Bay of Quinte	8	2	7	2	2	1	4	2	2	4	7	3	5	3	7	2	5	4	9	-	3	-	4	7	-	1	-	-	-	94	
	Hamilton	10	3	4	10	-	2	3	5	2	5	4	3	4	1	7	4	5	1	6	3	2	1	4	2	1	-	1	-	-	93	
	Kitchener-Waterloo	14	4	1	12	3	-	2	10	1	1	3	3	1	2	6	6	3	1	3	1	2	1	2	1	1	-	-	-	2	86	
	London	6	3	5	6	3	-	1	6	2	6	4	2	6	-	5	13	3	2	-	-	-	1	2	4	6	1	-	-	2	89	
	Montreal	63	26	43	47	13	13	15	18	24	23	36	16	20	22	33	43	47	28	50	11	11	12	51	16	15	20	6	5	-	727	
	Northern Alberta	16	3	8	5	3	7	-	7	2	5	7	2	1	6	3	8	10	5	10	1	-	-	4	-	1	6	-	1	-	121	
	Ottawa	24	9	36	35	12	6	9	11	15	27	13	19	7	14	23	26	35	16	43	7	13	4	14	43	5	7	9	4	2	488	
	Quebec	10	4	13	11	4	3	3	8	4	6	5	5	2	4	5	6	7	2	5	2	2	3	5	2	3	3	2	2	-	131	
	Regina	1	-	3	4	3	2	-	1	1	4	-	3	1	3	3	8	4	6	5	1	-	-	2	2	-	2	-	1	-	60	
	Southern Alberta	13	3	3	2	2	4	1	6	3	5	1	-	-	2	1	5	4	2	4	2	1	-	2	2	1	-	1	1	-	71	
	Toronto	60	26	30	43	11	31	12	30	26	24	29	13	27	25	30	50	32	37	39	4	19	12	25	17	7	15	7	6	3	690	
	Vancouver	17	10	11	10	2	13	1	9	5	13	5	4	8	7	11	23	17	7	22	2	1	1	1	6	2	8	3	-	1	220	
	Winnipeg	3	3	4	6	5	5	-	2	2	5	4	3	1	2	3	6	8	5	12	-	3	-	4	4	3	4	3	1	-	101	
			245	96	168	193	63	87	51	115	89	128	118	76	83	91	137	200	180	116	208	34	57	35	120	106	45	67	32	21	10	2,971
IX	Benelux	22	11	26	41	13	10	11	8	23	14	13	41	18	11	33	50	24	14	43	9	11	2	36	15	5	6	4	4	1	519	
	Buenos Aires	14	7	13	16	3	5	3	12	13	4	3	4	14	2	11	15	15	11	8	4	6	4	18	2	1	1	2	2	1	214	
	Chile	2	-	1	3	-	1	-	-	2	2	2	1	3	-	3	3	1	2	1	1	-	-	5	-	2	-	1	-	-	36	
	Colombia	7	9	23	8	2	5	1	3	5	2	4	3	4	2	3	10	8	4	15	2	2	2	5	2	1	2	3	1	-	138	
	Egypt	1	-	2	4	2	-	-	3	1	-	-	-	-	-	2	2	1	-	1	-	1	-	2	-	-	-	-	-	-	22	
	France	17	9	28	35	20	12	23	12	23	26	21	28	24	13	39	42	28	21	30	10	28	11	35	24	9	7	9	1	-	585	
	Geneva	8	8	9	17	14	7	13	13	18	14	10	14	13	5	35	23	21	6	21	4	12	7	21	15	2	3	9	2	1	345	
	Israel	9	-	3	22	6	5	5	-	8	8	3	4	7	2	5	21	3	10	5	4	4	1	14	12	2	-	-	2	-	165	
	Italy	22	9	25	56	23	13	23	20	27	16	17	42	23	13	35	81	37	12	32	9	26	19	40	19	6	8	7	10	-	670	
	Rio de Janeiro	1	1	3	4	-	1	1	2	-	-	-	1	1	2	2	1	1	1	5	1	1	-	1	1	-	-	-	-	-	31	
	Tokyo	50	49	88	101	40	39	46	60	65	57	53	80	54	35	142	113	118	51	58	44	53	38	78	49	25	33	32	27	-	1,678	
	United Kingdom	31	10	30	67	20	12	18	14	38	24	25	28	27	20	69	71	63	29	40	15	26	15	43	23	14	12	4	8	1	797	
			184	113	251	374	143	110	144	147	223	167	151	246	188	105	379	432	320	161	259	103	170	99	298	162	67	72	71	57	4	5,200

Audio 4279

Broadcasting 1449

Antennas &amp; Propagation 3982

Circuit Theory 6818

Nuclear Science 1585

Vehicular Communications 1529

Reliability 2023

Broadcast &amp; Television Receivers 1679

Instrumentation &amp; Measurement 3763

Space Electronics &amp; Telemetry 4610

Aerospace &amp; Navigational Electronics 3348

Information Theory 3788

Industrial Electronics 1713

Engineering Management 4417

Electron Devices 5292

Electronic Computers 9712

Microwave Theory &amp; Techniques 5802

Bio-Medical Electronics 2867

Communications Systems 4249

Ultrasonic Engineering 894

Component Parts 1839

Product Engineering &amp; Production 1169

Automatic Control 4125

Military Electronics 4626

Education 1014

Engineering Writing &amp; Speech 1747

Radio Frequency Interference 1166

Human Factors in Electronics 726

Geoscience Electronics 389

TOTAL 90,600

## SECTION C

TABLE 1 - IRE INTERNATIONAL CONVENTION STATISTICS

The Convention continues to increase in importance each year and is internationally recognized as one of the largest conventions of its kind in the world. An exhibition of radio-electronic equipment became part of the annual convention activities in 1930. The growth in Convention activities, from the first convention held in 1926 through 1962, is indicated in the comparison figures itemized below:

Date	Year	Attendance	Firms Represented	Exhibits	Sq. Ft. Occupied	Papers Presented	Location
Jan. 18-19	1926	*	0	0	0	6	New York, N. Y.
Jan. 10-12	1927	425**	0	0	0	5	New York, N. Y.
Jan. 9-11	1928	800	0	0	0	9	New York, N. Y.
May 13-15	1929	555	0	0	0	37	Washington, D. C.
Aug. 18-21	1930	575	*	20**	*	23	Toronto, Canada
June 4-6	1931	400	*	50	*	19	Chicago, Ill.
April 7-9	1932	461	*	25**	*	23	Pittsburgh, Pa.
June 26-28	1933	487	*	35	*	24	Chicago, Ill.
May 28-30	1934	940	*	56	*	32	Philadelphia, Pa.
July 1-3	1935	586	*	34	*	21	Detroit, Mich.
May 11-13	1936	360	*	40	*	19	Cleveland, Ohio
May 10-12	1937	1,189	*	37	*	30	New York, N. Y.
May 15-17	1938	1,866	*	29	*	49	New York, N. Y.
Sept. 20-23	1939	1,668	*	34	*	26	New York, N. Y.
June 27-29	1940	1,071	*	35**	*	44	Boston, Mass.
Jan. 9-11	1941	1,310	*	30**	*	28	New York, N. Y.
June 23-25	1941	353	0	0	0	33	Detroit, Mich.
Jan. 12-14	1942	1,790	*	30**	*	25	New York, N. Y.
June 29-30, July 1	1942	256	0	0	0	23	Cleveland, Ohio
Jan. 28	1943	1,750	0	0	0	11	New York, N. Y.
Jan. 28-29	1944	1,704	0	0	0	22	New York, N. Y.
Jan. 24-27	1945	3,000	*	39	*	43	New York, N. Y.
Jan. 23-26	1946	7,200	1,571	135	13,200'***	88	New York, N. Y.
Mar. 3-6	1947	12,013	2,845	177	20,830'	118	New York, N. Y.
Mar. 22-25	1948	14,459	3,059	180	25,900'	130	New York, N. Y.
Mar. 7-10	1949	15,710	3,427	225	30,700'	144	New York, N. Y.
Mar. 6-9	1950	17,689	4,088	253	33,600'	163	New York, N. Y.
Mar. 19-22	1951	22,919	5,082	277	45,672'	198	New York, N. Y.
Mar. 3-6	1952	28,673	6,306	365	54,246'	211	New York, N. Y.
Mar. 23-26	1953	35,642	7,493	412	63,033'	214	New York, N. Y.
Mar. 22-25	1954	39,302	8,799	605	87,192'	242	New York, N. Y.
Mar. 21-24	1955	42,133	9,504	704	95,782'	248	New York, N. Y.
Mar. 19-22	1956	41,017***	8,851	716	98,684'	277	New York, N. Y.
Mar. 18-21	1957	53,811	11,757	840	105,240'	284	New York, N. Y.
Mar. 24-27	1958	55,811	12,555	950	110,828'	285	New York, N. Y.
Mar. 23-26	1959	60,050	13,509	1,200	114,117'	263	New York, N. Y.
Mar. 21-24	1960	69,760	15,889	1,200	113,597'	261	New York, N. Y.
Mar. 20-23	1961	67,451	15,170	1,237	113,711'	274	New York, N. Y.
Mar. 26-29	1962	74,734	16,246	1,307	116,412'	275	New York, N. Y.

\* Figures not available

\*\* Estimated

\*\*\* Reduction in attendance due to blizzard

## SECTION D

Table 1 - 1962 Editorial Department Activities

The Golden Anniversary year of the IRE saw the largest increase in editorial pages in IRE's history. During the year 139 issues totaling 19,416 pages were published. Of these, 16,654 pages were devoted to technical and editorial material, a 19% increase over 1961. The large increase in publication output, although contributed in part by the Anniversary Issue of the PROCEEDINGS, was due largely to the continued substantial growth of the Professional Group TRANSACTIONS, which increased 25% in pages over the previous year.

## PROCEEDINGS OF THE IRE

The year was highlighted by the appearance of the 1186-page Anniversary Issue commemorating the fiftieth anniversary of the founding of the IRE in May. The largest and most comprehensive publication effort ever attempted by the IRE, the issue consisted of 180 contributions written in their entirety by special invitation under the editorship of Dr. Alfred N. Goldsmith, Editor Emeritus and Co-Founder of the IRE, who served as Anniversary Editor for this special edition.

A second special issue made its appearance in November on the subject of Geoscience Electronics. As a result, the total pages, shown in Table I and Fig. 1, and the number of papers for the year (275 versus 131 for 1961) far exceeded those of any previous year. In addition, three supplements totalling 100 pages were published as Part 2 of the PROCEEDINGS, two in March and April dealing with latest developments on IRE-AIEE merger proposals, and a third in June containing the annual index to Abstracts and References.

Following the appearance of one IRE Standard earlier in the year, the Executive Committee authorized an important change in Standards publication policy in the Fall whereby only those Standards of broad interest would henceforth be published in the PROCEEDINGS. As a result, a 164-page Standard dealing with electron tube noise measurements was published in September as a separate document and made available free to members upon request to Headquarters.

For the first time in several years the Correspondence section, already quite large, ceased to grow. The number of letters published was 400 compared to 449 for the previous year. This year's smaller total was due to the omission of the Correspondence section from the Anniversary Issue.

Table 1 - Volume of PROCEEDINGS Pages

	1962	1961	1960	1959
Editorial	2789	2234	2325	2370
Advertising	1943	2070	2485	2760
	4732	4304	4810	5130

The number of papers reviewed for the PROCEEDINGS dropped slightly from 292 in 1961 to 267 papers totaling 2226 pages in 1962. Of these, 25% were accepted, 36% were referred to the TRANSACTIONS for publication consideration, and 39% were rejected. These ratios were approximately the same as in 1960.

## TRANSACTIONS

As indicated in Fig. 2 and Table 2, the TRANSACTIONS of the Professional Groups enjoyed the second largest page growth since their inception. While the number of issues increased from 102 in 1961 to only 108 in 1962, total pages rose sharply from 8336 to 10,440, an increase of 25%. The number of papers and letters they produced (1536) accounted for 62% of the total IRE output of 2480 articles.

## IRE CONVENTION RECORD

The 1962 IRE INTERNATIONAL CONVENTION RECORD, published in 10 Parts, contained 230 papers and 29 abstracts totaling 2,280 pages.

## IRE STUDENT QUARTERLY

A career brochure for high school students, originally prepared by the IRE Cedar Rapids Section, was updated and published under the title, "The Challenge of Electronics," in the September issue of the STUDENT QUARTERLY. In addition, 40,000 reprints were distributed free to guidance counselors and interested students throughout the country.

The September issue also saw the merging of the STUDENT QUARTERLY and AIEE's student publication EE DIGEST into a combined publication in anticipation of the merger of the two societies. The combined publication, called STUDENT QUARTERLY AND EE DIGEST, was distributed to all student members of both societies in September and November. Plans were made to continue the publication on a bimonthly rather than a quarterly schedule during the coming year.

As a result of the foregoing changes and additions, the total pages published increased from 224 to 280.

#### IRE DIRECTORY

The 1963 IRE DIRECTORY, which was published in November, 1962, contained 1,420 pages including covers, of which 601 were membership listings and information and 819 advertisements and listings of manufacturers and products.

Table 2 - Volume of TRANSACTIONS Pages, 1962

	Issues	Pages
Aerospace and Navigational Electronics	4	292
Antennas and Propagation	6	832
Audio	6	212
Automatic Control	5	528
Bio-Medical Electronics	4	272
Broadcast and Television Receivers	3	384
Broadcasting	1	40
Circuit Theory	4	468
Communications Systems	4	556
Component Parts	4	236
Education	4	212
Electron Devices	6	544
Electronic Computers	6	880
Engineering Management	4	216
Engineering Writing and Speech	2	160
Human Factors in Electronics	2	80
Industrial Electronics	2	128
Information Theory	6	744
Instrumentation and Measurement	3	340
Microwave Theory and Techniques	6	656
Military Electronics	4	384
Nuclear Science	5	1,068
Product Engineering and Production	4	128
Radio Frequency Interference	3	340
Reliability	3	264
Space Electronics and Telemetry	4	324
Ultrasonics Engineering	2	68
Vehicular Communications	1	84
	108	10,440

### VOLUME OF TECHNICAL AND EDITORIAL MATTER PUBLISHED IN THE PROCEEDINGS OF THE IRE 1913-1962

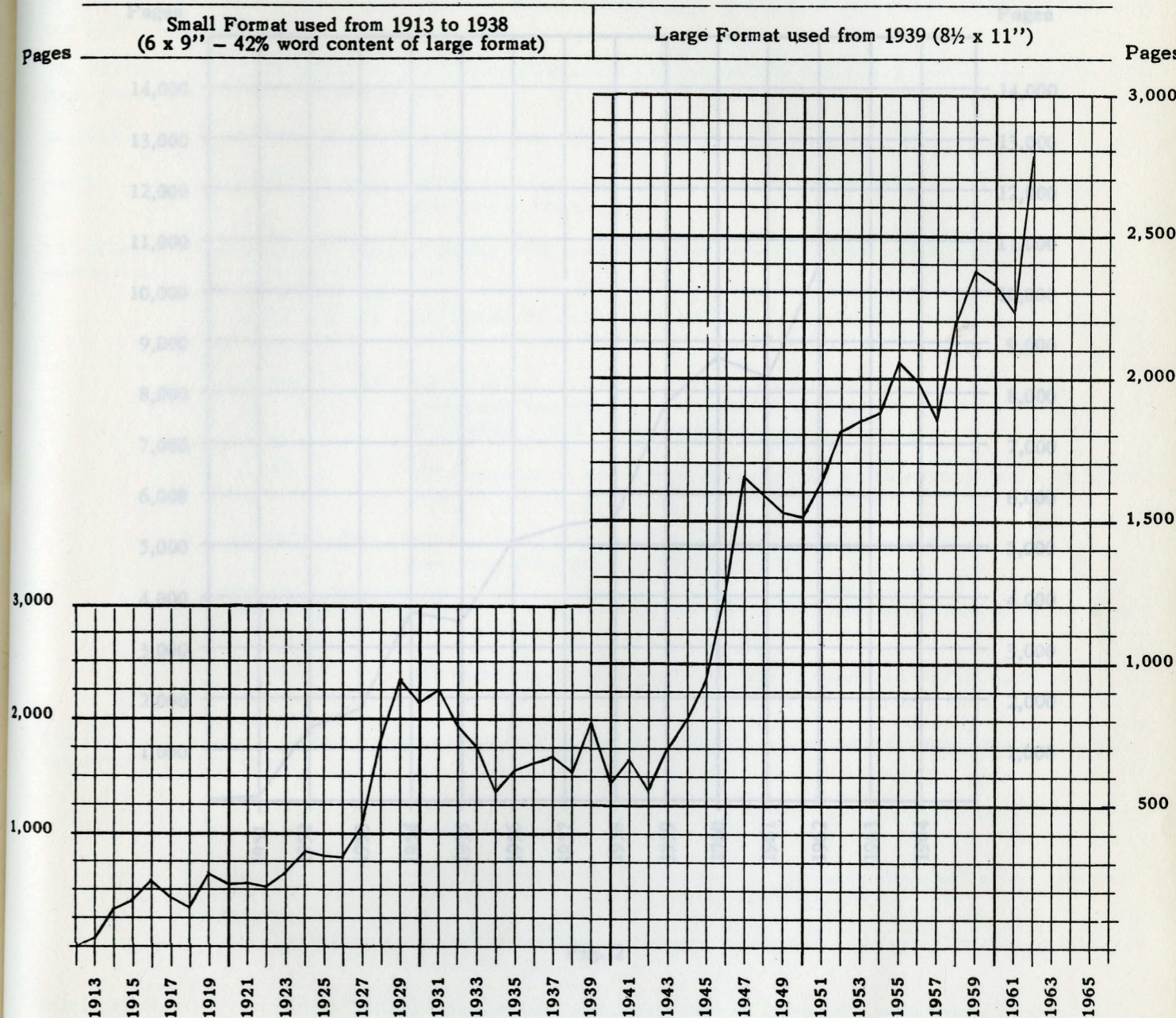


Fig. 1



VOLUME OF TECHNICAL AND EDITORIAL MATTER  
PUBLISHED IN THE TRANSACTIONS 1951 - 1962

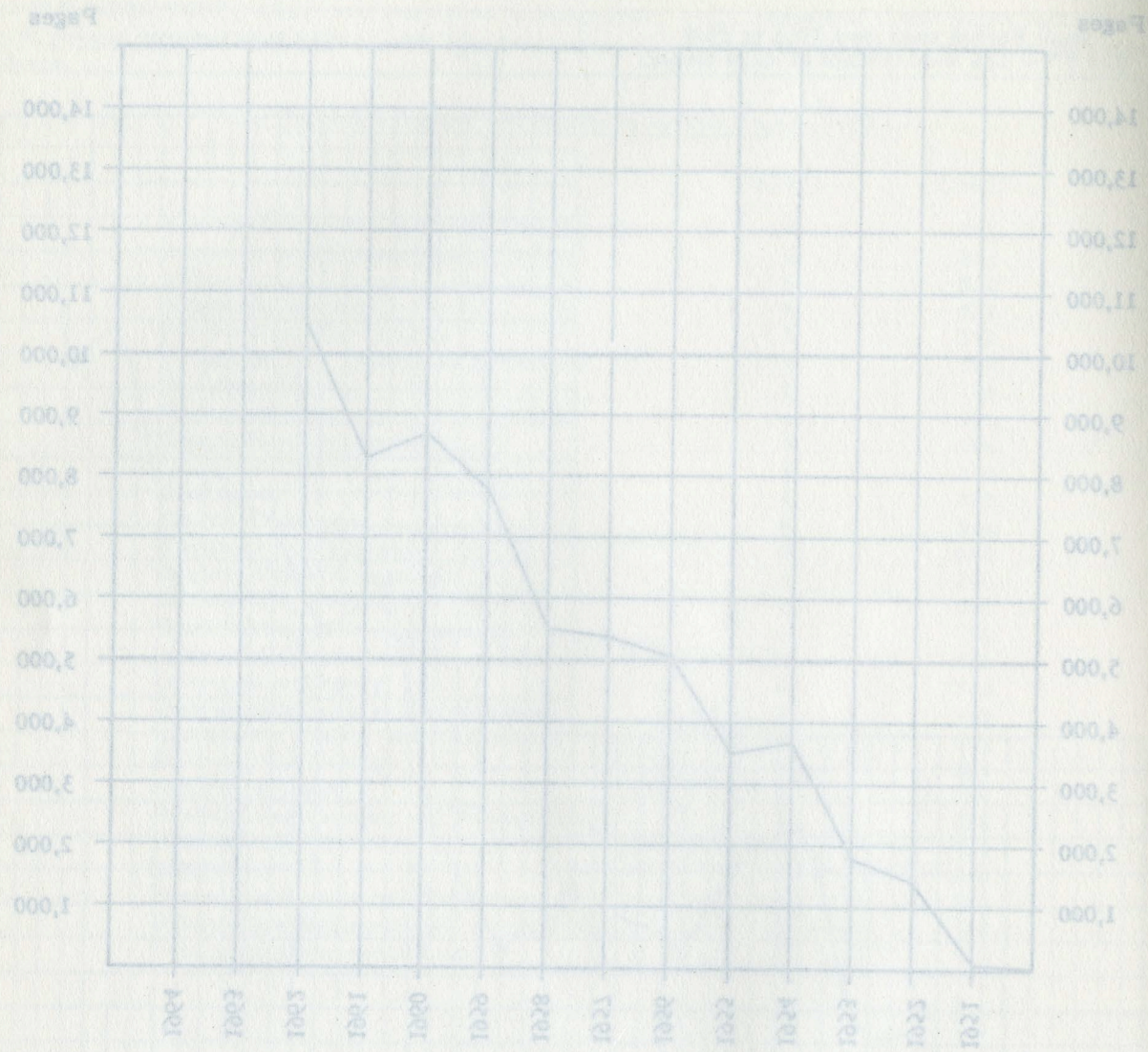


Fig. 1

SECTION E

Table 1 - Technical Department Activities - 1962

**TECHNICAL COMMITTEES.** IRE sponsors 26 Technical Committees covering phases of the field of Electronics as described in IRE Bylaws Section 504.3.

These IRE Committees, assisted by their 137 Subcommittees and Task Groups, produce three types of Standards in the field of Electronics: (A) Standards containing Methods of Measurements, (B) Standards containing Definitions of Terms, and (C) Standards containing Symbols. In addition, these committees originate Technical Reports and Recommended Practices.

During 1962, the work of these Committees included 250 meetings, of which 192 were held at IRE Headquarters and 58 throughout the nation.

The two Standards listed below, having been approved by the IRE Standards Committee, were published in 1962. Reprints are now available to the public:

- September 62 IRE 7. S1 - IRE Standards on Electron Tubes: Methods of Testing, 1962
- April 62 IRE 28. S1 - IRE Standards on Solid State Devices: Definitions of Superconductive Electronics Terms, 1962.

The following Standards were approved during 1962 by the IRE Standards Committee and submitted for publication:

- 62 IRE 14. S1 - IRE Standards on Piezoelectric and Ferroelectric Crystals: Definitions of Ferroelectric Crystals Terms, 1962.
- 62 IRE 7. S2 - IRE Standards on Electron Tubes: Definitions of Terms, 1962 and Companion Tutorial Paper entitled "Description of the Noise Performance of Amplifiers and Receiving Systems."
- 62 IRE 12. S1 - IRE Standards on Navigation Aids: Definitions of Inertial Navigation Terms, 1962.
- 62 IRE 20. TR1 - IRE Technical Committee Report on the State of the Art of Measuring Sine-wave Unbalanced RF Voltage, 1962.
- 62 IRE 20. TR2 - A Program to Provide Information on the Accuracy of Electrical Measurements, 1962.
- 62 IRE 8. S1 - IRE Standards on Electronic Computers: Methods of Testing Bobbin Cores, 1962.

The following Standards were approved during 1962 by the AIEE/IRE Joint Standards Committee and have been submitted for publication:

- A/I JS1 - 1962 - AIEE/IRE Standards on Graphical Symbols for Electrical and Electronic Diagrams, 1962.
- A/I JS2 - 1962 - AIEE/IRE Standards on Solid State Devices: Methods of Testing Junction Transistors for Large-Signal Applications, 1962.
- A/I JS3 - 1962 - AIEE/IRE Standards on Solid State Devices: Definitions of Thermoelectric Device Terms, 1962.

IRE is directly represented on 37 Sectional Committees of the American Standards Association, of which it sponsors three: The ASA Sectional Committee on Radio and Electronic Equipment, C16; the ASA Sectional Committee on Sound Recording, S4; and the ASA Sectional Committee on Nuclear Instrumentation, N3. Five IRE Standards received approval by the American Standards Association in 1962, and are now available through its international agency and one was reaffirmed as an American Standard.

IRE Technical Committees participated in international standardization in 1962 by reviewing and preparing comments on documents for the United States National Committee of the International Electrotechnical Commission. In addition, an IRE representative was delegated to represent the United States at an international meeting held this year.

IRE/AIEE Joint Standards Committee: This committee held three meetings during 1962. The by-laws were approved and distributed to the membership and seven proposed Standards were submitted for approval as joint IRE/AIEE Standards, of which five were approved. An additional three IRE Standards were also endorsed by the AIEE. Finally a conflict originating between a task group of IRE and one of AIEE has been resolved through the efforts of both groups, resulting in the approval of one of the joint Standards referred to above.

IRE/EIA Joint International Standards Advisory Committee: This committee was formed one year ago to serve as the U. S. Advisory group for the following IEC Committees and Subcommittees:

- SC12A - Radio Communication
- SC12C - Radio Transmitters
- SC13C - Electronic Measuring Instruments
- TC39 - Electron Tubes
- TC47 - Semiconductor Devices

During the calendar year 1962 the following international meetings of the above committees were held and the indicated number of U. S. delegates attended:

TC47 - October 2-12, 1962, Copenhagen, Denmark, 11 delegates.  
The delegates' expenses were met by their individual companies and the interests of both IRE and EIA were represented.

TC39 - October 22-26, 1962, Nice, France, 4 delegates. Of the four delegates who attended this meeting, Prof. Herbert Reich's expenses were paid for by the IRE.

There are no reports available on these meetings up to the present time.

SC12A is planning a meeting for February 4-11, 1963 at the Hague and preliminary arrangements are being made for SC12A and 12C to meet in Venice May 27-June 8, 1963. It is expected that the U. S. will be represented at these meetings.

The work assigned to the IRE/EIA Joint International Standards Advisory Committee has been progressing very satisfactorily and well over 600 documents have been handled by the Secretariat since its inception.

Joint Committee for Inter-Society Coordination (JCIC): The JCIC has been inactive during the past year and did not hold any meetings. In 1960 the committee had requested that ASA call a conference of its Member-Bodies to discuss the desirability of forming a policy by ASA for the minimizing of duplication of effort in developing standards on a subject of common interest to more than one group. This request has been taken under consideration by a special task group which has, in turn, referred it to the Board of Directors. Up to the present time no formal action has been taken by this group.

#### APPOINTED IRE DELEGATES TO OUTSIDE ORGANIZATIONS:

IRE appointed delegates to the following organizations for the one-year period - May 1, 1962 to April 30, 1963:

American Standards Association, Inc. (ASA) U. S. Advisory Committee of the International Organization for Standardization Technical Committee 69 on Statistical Treatment of Series of Observations (ISO/TC 69)

International Electrotechnical Commission (IEC) U. S. National Committee

International Radio Consultative Committee (CCIR) Executive Committee of U. S. Delegation

International Scientific Radio Union (URSI) Executive Committee, U. S. National Committee

Joint IRE-EIA-SMPTE-NAB Committee for Inter-Society Coordination (JCIC) (Television)

In addition, IRE appointed representatives to serve on the following organizations for the year 1962:

Council for the American Association for the Advancement of Science (AAAS)

National Academy of Sciences - National Research Council, Advisory Board of the Office of Critical Tables

National Academy of Sciences - National Research Council, Advisory Panels to the National Bureau of Standards (NBS) - IRE Technical Advisory Committee

National Bureau of Standards (NBS) Journal of Research

National Electronics Conference (NEC)

National Research Council (NRC) Division of Engineering and Industrial Research

During 1962, The Executive Committee of the U. S. National CCIR (International Radio Consultative Committee) held six meetings during which representatives of the fourteen Study Groups (except XIII and XIV) held international meetings during 1962. Papers presented by the U. S. delegations were approved by the CCIR Executive Committee as the U. S. position, prior to submission at the international meetings. The United States acted as hosts at the international meetings of Study Groups IV and VIII held in Washington, D. C., prior to the IRE International Convention in March. An ad hoc Organization Group was established by the Executive Committee to review material on organization matters, for submission at the Xth Plenary meeting in January 1963. The site for the Xth Plenary meeting was changed late in November 1962 from New Delhi to Geneva. Lists of material received at IRE during 1962 were distributed quarterly to the Chairmen of the IRE Technical Committees and Professional Groups, as well as to the members of the Joint Technical Advisory Committee.

The International Scientific Radio Union (URSI) U. S. National Committee held two meetings during the Spring URSI-IRE Meeting in May 1962. Coinciding with this meeting the Committee on Space Research (COSPAR) established by the International Council of Scientific Unions (ICSU) held a Plenary Meeting and its Third International Space Science Symposium.

The Council for the American Association for the Advancement of Science (AAAS) held its 129th Annual Meeting December 26 to 31, 1962, at Philadelphia, Pa.

There are 18 NAS-NRC Advisory Panels to the National Bureau of Standards. The IRE is represented on six of these Panels and this group forms the IRE Technical Advisory Committee to the NBS. Individual Panel Meetings were held periodically during 1962.

#### THE JOINT TECHNICAL ADVISORY COMMITTEE (JTAC) OF IRE AND EIA

The Joint Technical Advisory Committee held a total of eight meetings for the period July 1, 1961, through June 30, 1962. The Fourteenth Anniversary Dinner was held at The Waldorf-Astoria, New York City, in June 1962.

JTAC has been endeavoring since October 1961 to spark enthusiasm among engineers in the area of radio frequency interference. This resulted in a request by the PGRFI in November 1961 for JTAC endorsement to a Panel Session planned for the 1962 IRE International Convention. Mr. Frederick R. Lack of JTAC chaired the Session - "Electro-Magnetic Compatibility - Its Significance to our Survival." JTAC requested that the Session be published in the IRE International Convention Record and now has reprints available for distribution.

Through its Secretary, JTAC initiated an inquiry into radiation interference problems and the suppression of noise. A special IRE/AIEE Planning Committee for Electromagnetic Compatibility convened on November 27, 1962. This resulted in a recommendation to JTAC and IEEE to undertake a liaison function to investigate and assist in the correlation of efforts of all existing activities between the various professional, industrial, and government areas of electromagnetic compatibility, involving 1) writing standards; 2) developing methods of measurement; and 3) educational activities, including the preparation of handbooks, designers' guides and so forth.

The many demands placed on the spectrum and the urgent need to alleviate them resulted in a letter to the President of the United States urging that the national interest requires strengthening the machinery for a) shaping a national policy concerning telecommunications; b) effective participation in the international conferences affecting national policy, and c) proper and decisive implementation of the national policy. On July 26, 1962, JTAC established a Subcommittee (62.1) under the chairmanship of Mr. Philip F. Siling to review JTAC's 1952 publication "Radio Spectrum Conservation" and bring it up to date. This review is under way and has the full support of its two sponsors.

Section F. Table I - Section and Subsection Meetings and Membership - 1961 - 1962

Region	Section	MEETINGS **						MEMBERSHIP				
		1961			1962			1961		1962		
		Section	PG	Total	Section	PG	Total	Sub-Section	Section Total	Sub-Section	Section Total	
1	Binghamton	8	3	11	7	5	12					
	Boston	3	82	106	2	64	86					
	Merrimack V.S.	8			8			654		783		
	New Hamp. S.	6			6			260		296		
	No. Vermont S.	7			4			66		74		
	* Providence S.				2					345		
	Buffalo-Niagara	8	13	21	6	2	8		499		492	
	Connecticut	12	0	15	5	-	9		1,389		1,572	
	Fairfield Cty.S.	3	-		4	-		666		728		
	Elmira-Corning	12	0	12	8	-	8		244		236	
	Erie	8	0	8	7	-	7		60		92	
	Ithaca	8	0	8	5	-	5		230		230	
	Rochester	12	3	15	5	8	13		629		614	
	Rome-Utica	12	12	24	6	6	12		604		582	
	Schenectady	5	6	11	6	3	9		496		562	
	Syracuse	5	14	19	4	15	19		1,193		1,219	
	Western Mass.	7	0	7	8	-	8		312		322	
		124	133	257	93	103	196		12,672		13,504	
2	Long Island	18	19	37	23	16	39		4,880		5,204	
	New York	13	66	106	15	50	100		5,826		6,370	
	Catskill S.	7			5	-		219		239		
	Mid-Hudson S.	6			7	-		649		738		
	Monmouth S.	5	1		8	5		703		980		
	Westchester S.	8			10	-		961		993		
	No. New Jersey	9	18	27	8	8	16		4,251		4,247	
	Princeton	8	0	8	8	-	8		910		997	
			74	104	178	84	79	163		15,867		16,818
	3	Atlanta	10	3	13	8	2	10		875		727
Baltimore		8	27	35	8	37	45		1,846		1,955	
Canaveral		12	1	13	6	4	10		551		683	
Florida W. Coast		14	14	28	5	4	9		441		573	
Gainesville		8	0	8	5	-	5		241		244	
Huntsville		11	-	24	6	-	14		787		869	
Memphis S.		4	4		3	5		95		116		
Nashville S.		5			0	-		95		96		
Miami		8	0	17	11	-	18		350		360	
Palm Beach S.		9			7	-		52		80		
Mobile		7	0	7	9	-	9		79		79	
North Carolina		10	2	30	11	2	27		700		756	
Eastern N. C. S.		8			6	-		202		227		
Western N. C. S.		10			8	-		72		101		
Northwest Fla.		10	2	15	7	2	16		188		193	
Panama City S.		3			7			39		39		
Orlando		9	6	15	8	9	17		405		427	
Philadelphia		11	70	102	7	81	103		5,243		5,502	
Lancaster S.		7			6	-		200		235		
Lehigh Val. S.		7			5	-		244		232		
Reading S.		7			4	-		85		85		
South Carolina		9	0	9	8	-	8		232		215	
Virginia		16	0	16	13	-	16		664		701	
* Piedmont S.					2					382		
* Tidewater S.					1					319		
Washington		10	56	66	9	51	60		3,965		4,622	
			213	185	398	170	197	367		16,567		17,906

Section F. Table I - Section and Subsection Meetings and Membership - 1961 - 1962

Region	Section	MEETINGS **						MEMBERSHIP				
		1961			1962			1961		1962		
		Section	PG	Total	Section	PG	Total	Sub-Section	Section Total	Sub-Section	Section Total	
4	Akron	9	6	15	5	7	12					
	Central Pa.	9	0	9	8	-	8					
	Cincinnati	10	0	10	9	-	9					
	Cleveland	8	10	18	8	11	19					
	Columbus	13	17	30	5	9	14					
	Dayton	8	20	28	4	13	17		1,067		1,007	
	Detroit	9	12	21	6	8	14		1,359		1,429	
	Emporium	12	0	12	9	-	9		153		142	
	Pittsburgh	10	10	20	7	9	18		939		966	
	* Cambridge S.				2					61		
	Toledo	8	0	8	7	-	7		186		166	
	Western Mich.	8	0	8	9	-	9		161		172	
	Williamsport	6	0	6	1	-	1		59		59	
			110	75	185	80	57	137		6,091		6,317
5	Cedar Rapids	6	0	9	8	-	8					
	Burlington S.	3			-			32		35		
	Chicago	9	54	63	5	36	41		3,584		3,777	
	Evansville-Owens.	10	0	10	10	-	10		175		182	
	Fort Wayne	9	0	9	8	-	8		247		291	
	Indianapolis	10	0	10	9	-	9		675		742	
	Louisville	7	0	7	10	-	10		205		180	
	Milwaukee	10	3	13	5	3	8		977		913	
	Omaha-Lincoln	9	27	36	8	29	37		397		357	
	South Bend-Mish.	10	0	10	9	-	9		219		226	
	Twin Cities	10	6	16	5	15	20		1,232		1,303	
			93	90	183	77	83	160		8,432		8,772
	6	Beaumont-Pt. A.	11	0	11	9	-	9				
Dallas		16	4	20	13	5	18		1,271		1,353	
Denver		5	2	10	5	1	6		945		992	
Pikes Peak S.		3	-		0	-		59		89		
El Paso		11	0	12	3	-	4		294		284	
Las Cruces-White Sands S.		1	-		1			127		120		
Fort Worth		9	10	19	15	6	21		430		363	
Houston		11	7	18	9	3	12		685		740	
Kansas City		10	0	10	8	-	8		686		672	
Little Rock		8	0	8	7	-	7		138		122	
Lubbock		8	0	8	8	-	8		110		92	
New Orleans		5	0	5	4	-	4		313		332	
Oklahoma City		8	7	15	8	2	10		323		310	
St. Louis		10	0	10	8	-	8		781		811	
San Antonio-Austin		11	0	11	10	2	12		473		444	
Shreveport		10	0	10	10	-	10		80		75	
Tulsa		8	0	8	7	-	7		172		266	
Wichita	8	0	8	6	-	6		193		185		
		153	30	183	131	19	150		7,039		7,177	

Section F. Table I - Section and Subsection Meetings and Membership - 1961 - 1962

Region	Section	MEETINGS **					MEMBERSHIP				
		1961		1962			1961		1962		
		Section	PG	Total	Section	PG	Total	Sub-Section	Section Total	Sub-Section	Section Total
7	Alamogordo-										
	Holloman	9	0	9	9	-	9		114		100
	Albuquerque-	9	18	27	9	16	25		701		741
	Los Alamos										
	Anchorage	7	0	7	1	-	1		142		137
	China Lake	7	0	7	7	-	7		121		109
	Fort Huachuca	9	3	12	9	3	12		99		85
	Hawaii	10	0	10	10	-	10		192		233
	Las Vegas	4	0	4	4	-	4		82		96
	Los Angeles	10	128	207	7	99	174		10,352		11,460
	Buenaventura S.	8	-	-	7	5	-	211		242	
	Crescent Bay S.	3	-	-	8	-	-	1,630		1,683	
	Orange Belt S.	7	10	-	4	1	-	785		856	
	Pasadena S.	8	-	-	9	-	-	789		874	
	San Fernando S.	7	-	-	5	-	-	1,869		2,021	
	Santa Ana S.	8	9	-	6	11	-	1,982		2,297	
	Santa Barbara S.	9	-	-	5	-	-	504		638	
	* Southern S.				7	-	-			1,404	
	Phoenix	5	0	5	8	-	8		732		775
	Portland	13	5	18	7	1	8		433		437
	Sacramento	8	0	8	10	-	10		279		305
	Salt Lake City	9	0	9	10	-	10		473		451
	San Diego	10	16	26	7	13	20		1,041		1,099
	San Francisco	2	114	121	3	69	73		5,046		5,479
	East Bay S.	5	-	-	1	-	-	782		844	
	Seattle	10	5	23	7	2	14		1,505		1,573
	Richland S.	8	-	-	5	-	-	139		118	
	Tucson	8	0	8	9	-	9		286		308
		193	308	501	174	220	394		21,598		23,388
8	Bay of Quinte	7	0	7	5	-	5		120		136
	Hamilton	8	0	8	6	-	6		130		159
	Kitchener-Waterloo	7	0	7	7	-	7		83		91
	London	8	0	12	5	-	8		149		201
	S. W. Ontario S.	4	-	-	3	-	-	46		88	
	Montreal	4	3	7	9	-	9		762		850
	No. Alberta	6	0	6	0	-	-		200		227
	Ottawa	8	1	9	8	2	10		537		569
	Quebec	8	0	8	7	-	7		171		167
	Regina	7	0	7	2	-	2		123		126
	So. Alberta	6	0	6	5	-	5		167		224
	Toronto	12	5	17	9	11	20		763		915
	Vancouver	11	0	16	10	-	18		364		420
	Victoria S.	5	-	-	8	-	-	29		49	
	Winnipeg	11	0	11	9	-	9		169		181
		112	9	121	93	13	106		3,758		4,266

Section and Subsection Meetings and Membership, 1961-1962

Region	Section	MEETINGS **					MEMBERSHIP			
		1961		1962			1961		1962	
		Section	PG	Total	Section	PG	Total	Section	Section	
9	Benelux	7	0	7	9	0	9		185	234
	Egypt	5	0	5	5	0	5		38	49
	France	0	0	0	3	0	3		168	205
	Geneva	5	0	5	6	0	6		134	182
	Israel	5	0	5	6	0	6		96	102
	Italy	5	0	5	0	0	0		395	450
	* United Kingdom	-	-	-	0	0	0		-	680
		27	0	27	29	0	29		1,016	1,902
Other	Buenos Aires	11	0	11	13	0	13		228	266
	Chile	1	0	1	3	0	3		45	54
	Colombia	7	0	7	6	0	6		83	98
	Rio de Janeiro	8	0	8	4	0	4		55	41
	Tokyo	4	1	5	3	0	3		413	488
		31	1	32	29	0	29		824	947

\* Established during 1962

\*\* As reported to IRE Headquarters, 12/28/62

The India and Newfoundland Sections were disbanded in 1962

RECAPITULATION

1962											
Region	1	2	3	4	5	6	7	8	9	Other	Total
Sections	12	4	15	12	10	16	16	13	7	5	110
Subsections	5	4	11	1	1	2	10	2	-	-	36
Membership	13,504	16,818	17,906	6,317	8,772	7,177	23,388	4,266	1,902	947	100,997
Section Meetings	93	84	170	80	77	131	174	93	27	31	960
PG Meetings	103	79	197	57	83	19	220	13	-	1	772
Total Meetings	196	163	367	137	160	150	394	106	27	32	1,732

1961											
Region	1	2	3	4	5	6	7	8	-	Other	Total
Sections	12	4	15	12	10	16	16	14	-	12	111
Subsections	4	4	9	-	1	2	9	2	-	-	31
Membership	12,672	15,867	16,567	6,091	8,432	7,039	21,598	3,758	-	2,067	94,091
Section Meetings	124	74	213	110	93	153	193	112	-	58	1,130
PG Meetings	133	104	185	75	90	30	308	9	-	1	935
Total Meetings	257	178	398	185	183	183	501	121	-	59	2,065

## SECTION F

Table 2 - Professional Group Chapter Meetings, by Section, by Group, 1961, 1962 \*

Section	1	2	3	4	5	6	7	8	9	10	11	12	13	14	15	16	17	18	19	20	21	22	23	24	25	26	27	28	29	Total
Akron	1962		2								1					2							2							7
	1961		1								1					4							0							6
Alamogordo-	1962																													-
Holloman	1961																													-
Albuquerque-	1962	0		0b	5						0				3		3b													13
Los Alamos	1961	2		1	1						6						4													3
Albuquerque-	1962																													15
Los Alamos	1961																													3
Anchorage	1962																													-
	1961																													-
Atlanta	1962									2																				2
	1961				2					1																				3
Baltimore	1962	0		6b							4	5		4		3	0b	5	1			4	2	3						37
	1961	1		0b							1	2		5		4	6b	1				2	4	1						27
Bay of Quinte	1962																													-
	1961																													-
Beaumont-	1962																													-
Port Arthur	1961																													-
Benelux	1962																													-
	1961																													-
Binghamton	1962						2							2		1														5
	1961						0							0		3														3
Boston	1962	3		5			6		2		7	3		1	4	5	6	3	4			5	4	2			4			64
	1961	3		7			6				4	4		6	6	7	8	6	0			6	6	7			4			82
Buenos Aires	1962																													-
	1961																													-
Buffalo-	1962			0b														0b	2											2
Niagara	1961			5b														0b	8			0								13
Canaveral	1962									1																				4
	1961									1													0			3				1
Cedar Rapids	1962																													-
	1961																													-
Central	1962			0																										0
Pennsylvania	1961			0																										0
Chicago	1962	4		3	0	1	6	2	1	3	0		1	4		0	2	2	1		0		3	0		0	3			36
	1961	7		1	2	3	4	4	2	2	1		2	4		2	3	2	2		2		5	2		1	3			54
Chile	1962																													-
	1961																													-
China Lake	1962																													-
	1961																													-

## SECTION F

Table 2 - Professional Group Chapter Meetings, by Section, by Group 1961, 1962 \*

Section		1	2	3	4	5	6	7	8	9	10	11	12	13	14	15	16	17	18	19	20	21	22	23	24	25	26	27	28	29	Total
Cincinnati	1962	0																													0
	1961	0																													0
Cleveland	1962	2	3		2									0					4												11
	1961	1	3				0							1					5												10
Colombia	1962																														-
	1961																														-
Columbus	1962			6b				0										0b	3												9
	1961			0b				5										6b	6												17
Connecticut	1962					0											0k														0
	1961					0																									0
Dallas	1962						0										4c			1				0c							5
	1961						0										0c							4c							4
Dayton	1962	1		2		1					1	0			2		2					2			2			0			13
	1961	2		2		1					1	1			5		4					2			2						20
Denver	1962			1							0							0		0											1
	1961			2							0							0													2
Detroit	1962			0p			4				1					0p	2	0p						1		0					8
	1961						5				2						4							1							12
Egypt	1962																														-
	1961																														-
Elmira	1962																														-
Corning	1961																														-
El Paso	1962																														-
	1961																														-
Emporium	1962																														-
	1961																														-
Erie	1962																														-
	1961																														-
Evansville-	1962																														-
	Owensboro	1961																													-
Florida	1962		3				1	0				0						0		0											4
West Coast	1961		2				1					7						3		1											14
Fort	1962																								3d						3
Huachuca	1961																								3d						3
Fort Wayne	1962																														-
	1961																														-
Fort Worth	1962							0									0c							5c				1			6
	1961							4									3c							0c			3				10
France	1962																														-
	1961																														-
Gainesville	1962																														-
	1961																														-

SECTION F

Table 2 - Professional Group Chapter Meetings, by Section, by Group 1961, 1962 \*

Section	1	2	3	4	5	6	7	8	9	10	11	12	13	14	15	16	17	18	19	20	21	22	23	24	25	26	27	28	29	Total
Geneva 1962																														-
Geneva 1961																														-
Hamilton 1962																														-
Hamilton 1961																														-
Hawaii 1962																														-
Hawaii 1961	0																													0
Houston 1962	0	0		0		0			0					0		0					3									3
Houston 1961	0	1		1		0			1							0					2									7
Huntsville 1962										0											5									5
Huntsville 1961										0											4e									4
India 1962																														-
India 1961																														-
Indianapolis 1962								0																	0					0
Indianapolis 1961																									0					0
Israel 1962																														-
Israel 1961																														-
Italy 1962																														-
Italy 1961																														-
Ithaca 1962																														-
Ithaca 1961																														-
Kansas City 1962																														-
Kansas City 1961																														-
Kitchener-Waterloo 1962																														-
Kitchener-Waterloo 1961																														-
Las Vegas 1962																														-
Las Vegas 1961																														-
Little Rock 1962																														-
Little Rock 1961																														-
London 1962																														-
London 1961																														-
Long Island 1962			2			Of	Of		3		Of			Of	Of	1	5	Og			Of	Of	3	2						16
Long Island 1961						Of	Of		0	3	Of			Of	Of	4	5	Og			Of	Of	2	5				Of		19
Los Angeles 1962			3	5	3	8	7		4	6	2	2		3	7	2	5	Og			8	5	7	5		4	8	2		99
Los Angeles 1962			1h													7j	0h													1
Los Angeles 1962			4i														0i													11
Los Angeles 1961			7	4	7	9	10		5	9		4		4	7	9	6	6	5		9	3	8	5		3	2	6		5
Los Angeles 1961			10h													5j	0h													10
Los Angeles 1961			4i														0i													9
Louisville 1962																														-
Louisville 1961																														-
Lubbock 1962																														-
Lubbock 1961																														-

## SECTION F

Table 2 - Professional Group Chapter Meetings, by Section, by Group, 1961, 1962 \*

Section	1	2	3	4	5	6	7	8	9	10	11	12	13	14	15	16	17	18	19	20	21	22	23	24	25	26	27	28	29	Total
Miami	1962								0																				0	
	1961																												-	
Milwaukee	1962	3																0					0						3	
	1961	2																0					1						3	
Mobile	1962																												-	
	1961																												-	
Montreal	1962	0r	0r	0b													0b	0											0	
	1961																												3	
Newfoundland	1962																												-	
	1961																												-	
New Orleans	1962																												-	
	1961																												-	
New York	1962					2f	6f				7f			4	8	2k	7	4g	5L		4f	2f	4				0f		55	
	1961					5f	4f			7f				5f	5f	9k	12	7g	1L		3f	7f	2			0	0f		67	
North Carolina	1962																	2											2	
	1961																	2											2	
Northern Alberta	1962																												-	
	1961																												-	
Northern New Jersey	1962					0f	0f			0f				0f	0f	0k	2	0g	3		0f	0f	0			3	0f		8	
	1961					0f	0f			0f				0f	0f	0k	5	0g	5		0f	0f				8	0f		18	
Northwest Florida	1962																							2					2	
	1961																							2					2	
Oklahoma City	1962										2								0										2	
	1961										3								4										7	
Omaha-Lincoln	1962	0s	1s	4m	0	4n		0s				0m	5		5o	3	4	0	0n		0o			3					29	
	1961		6	2m	1	0n						0m	2		0o	4	1	3	4n		2o			2					27	
Orlando	1962									3							6												9	
	1961									1							5												6	
Ottawa	1962																							2					2	
	1961																							1					1	
Philadelphia	1962	5	2t	4b	4	5n	5	0t	5	6	2			3	3	7	1b	3	1n		4	5	5	4		3	4		81	
	1961	4	2	5	5	2	6		0	2	4			2	1	7	4	2	2		5	3	5	3		2	4		70	
Phoenix	1962															0								0d					0	
	1961															0								0d					0	
Pittsburgh	1962		2												0	3								4					9	
	1961		1													7							2						10	
Portland	1962																	1											1	
	1961																	5											5	
Princeton	1962																		0g										0	
	1961																		0g										0	
Quebec	1962																												-	
	1961				0																								0	

## SECTION F

Table 2 - Professional Group Chapter Meetings, by Section, by Group 1961, 1962 \*

Section	1	2	3	4	5	6	7	8	9	10	11	12	13	14	15	16	17	18	19	20	21	22	23	24	25	26	27	28	29	Total
Regina	1962																													-
	1961																													-
Rio de Janeiro	1962																													-
	1961																													-
Rochester	1962																	8						0						8
	1961																	1						2						3
Rome-Utica	1962													0		0				2				3			1			6
	1961													5						6				1			0			12
Sacramento	1962																													-
	1961																													-
St. Louis	1962																													-
	1961																													-
Salt Lake City	1962															0										0				0
	1961																													-
San Antonio	1962	1			1																									2
Austin	1961	0			0																									0
San Diego	1962	3		6b						1							2b	0						1						13
	1961	2		5						3							5	0						1						16
San Francisco	1962	1	0	9	1		4		4	6		5		4	1	6	7	4	2			4	2	6		3	0			69
	1961	9	2	10	4		7		7	8		5		5	9	10	5	6	4			7	4	4		5	7			114
Schenectady	1962												0		1		1							1						3
	1961											1			0		1						4							6
Seattle	1962			0b	0									2				0b										0		2
	1961			0b	0									3				2b												5
Shreveport	1962																													-
	1961																													-
South Bend-Mishawaka	1962																													-
	1961																													-
South Carolina	1962																							0						0
	1961																													-
Southern Alberta	1962																													-
	1961																													-
Syracuse	1962			2b	1m							0m		1	2	3	0b		1					2		3				15
	1961	0		1b	2									2	2	3	0b		2					2						14
Tokyo	1962																	0												0
	1961																	1												1
Toledo	1962																													-
	1961																													-
Toronto	1962			6b		0												0b		5										11
	1961			0b														0b		5										5

## SECTION F

Table 2 - Professional Group Chapter Meetings, by Section, by Group 1961, 1962 \*

Section	1	2	3	4	5	6	7	8	9	10	11	12	13	14	15	16	17	18	19	20	21	22	23	24	25	26	27	28	29	Total	
Tucson	1962																							0d						0	
	1961																							0d						0	
Tulsa	1962																													-	
	1961																													-	
Twin Cities	1962	2	2			1							1	2	1								3			3				15	
	1961	0	1			2							0	2	0								0			1				6	
U. K.	1962																													-	
	1961																													-	
Vancouver	1962		0																											0	
	1961		0																											0	
Virginia	1962																													-	
	1961																													-	
Washington	1962	0	0	6		4	2	5		5	4	2		2	4	2	6	0	2		0	3		0		1	3			51	
	1961	2	1	7		2	0	3		4	4	3		0	4	5	8	1	2		2	0		5		1	2			56	
Western	1962																													-	
Massachusetts	1961																													-	
Western	1962																													-	
Michigan	1961																													-	
Wichita	1962																													-	
	1961																													-	
Williamsport	1962																													-	
	1961																													-	
Winnipeg	1962																													-	
	1961																													-	
TOTALS		60	32	122	58	34	61	86	3	48	70	53	35	12	79	77	153	147	120	71	-	54	50	88	90	-	51	44	8	-	1,706

\* As reported to IRE Headquarters 12/28/62.

- a - Two separate G-5 Chapters
- b - Joint G-3 and G-17 Chapters
- c - Joint Dallas-Fort Worth Chapters
- d - Joint Ft. Huachuca, Tucson and Phoenix Chapter
- e - Memphis Subsection Chapter
- f - Joint L. I., N. Y., and N. N. J. Chapter
- g - Joint L. I., N. Y., N. N. J., and Princeton Chapter
- h - Orange Belt Subsection Joint G-3/17 Chapter
- i - Santa Ana Subsection Joint G-3/17 Chapter
- j - Santa Ana Subsection Chapter

- k - Joint N. Y., N. N. J. and Conn. Chapter
- L - Monmouth Subsection Chapter
- m - Joint G-4/12 Chapter
- n - Joint G-6/19 Chapter
- o - Joint G-15/21 Chapter
- p - Joint G-3/15/17 Chapter
- q - Buenaventura Subsection Chapter
- r - Joint G-1/2 Chapter
- s - Joint G-1/2/8 Chapter
- t - Joint G-2/8 Chapter

## SECTION F

Table 3 - Section and Subsection Publications, 1962

A growing major activity of many Sections and the larger Subsections in recent years is the publication of a local monthly Bulletin to fulfill the need for announcing to the Section member the increasing activities of the Section, including (1) Section Meetings (2) Professional Group Chapter Meetings and (3) information on the local and national level of interest to the Section member.

Fifty-three of the Sections and Subsections now issuing these monthly publications are listed below:

Section:	Publication:	Section:	Publication:
Akron	"The Bulletin"	North Carolina	"Bulletin"
Albuquerque-Los Alamos	"The Blast"	Northern New Jersey	"Newsletter"
Baltimore	"The Speaker"	Northern Vermont	
Benelux	"The Benelux Bridge"	Subsection (Boston)	"The Viren"
Binghamton	"Pulse"	Northwest Florida	"The Courier"
Boston	"The Reflector"	Oklahoma City	"Sooner Satellite"
Canaveral	"Indian River Engineer"	Ottawa	"IRE Bulletin"
Central Pennsylvania	"Newsletter"	Philadelphia	"Almanack"
Chicago	"Scanfax & Spice"	Pittsburgh	"Bulletin"
Cleveland	"Cleveland Section News"	Portland	"Portland Pi"
Columbus	"IREmitter"	Princeton	"P. S."
Dallas	"dIREction"	Rochester	"The Communicator"
Dayton	"Wave Guide"	Rome-Utica	"IRE Echoes"
Denver	"The Denver Decibel"	St. Louis	"The Mighty Mho"
Detroit	"Cross Talk"	Salt Lake City	"Salt Lake Crystal"
Emporium	"Newsletter"	San Antonio-Austin	"The Analog"
Evansville-Owensboro	"The Transmitter"	San Diego	"IRE Bulletin"
Florida West Coast	"Suncoast Signal"	San Francisco	"The Grid"
Fort Wayne	"The Announcer"		"Mid-Month Grid"
Houston	"The Scope"	Schenectady	"Capitol District News Bulletin"
Huntsville	"The Live Wire"		"Data Link"
Indianapolis	"Indiana Reporter for Engineers"	Seattle	"The Nucleus"
Long Island	"The Pulse"	South Bend-Mishawaka	"Southern Corona"
Los Angeles	"The Bulletin"	South Carolina	"Scanner"
	"The Mid-month Bulletin"	Syracuse	"Denshi Tokyo"
Miami	"MiamiTron"	Tokyo	"The Radiator"
Monmouth Subsection (New York)	"The Scanner"	Twin Cities	"The Transform"
New York	"The Monitor"	Vancouver	"Virginia Vector"
		Virginia	"Bulletin"
		Washington	

## SECTION G

Table 1 - Student Branches and Student Membership

29 Student Branches were established during 1962. The total number of Student Branches is now 246, operating as follows:

- 61 - IRE Student Branches (IRE)
- 53 - IRE Student Associate Branches (SA) IRE
- 131 - IRE-AIEE Student Branches (IRE-AIEE)
- 1 - IRE-AIEE Student/Student-Associate Branch (S-SA) IRE-AIEE

School	Section Location	Region	Membership *****	Branch
Academy of Aeronautics	Long Island	2	89	(SA) IRE
Air Force Institute of Technology	Dayton	4	70	IRE-AIEE
Akron, University of	Akron	4	17	IRE-AIEE
Alabama, University of	Huntsville	3	36	IRE-AIEE
Alaska, University of	Anchorage	7	9	IRE-AIEE
Alberta, University of	Northern Alberta	8	24	IRE-AIEE
Arizona State University	Phoenix	7	36	IRE
Arizona, University of	Tucson	7	84	IRE-AIEE
Arkansas, University of	Little Rock	6	41	IRE-AIEE
Arlington State College	Fort Worth	6	85	(SA) IRE
Auburn University	Atlanta	3	67	IRE
Bradley University	Chicago	5	25	IRE-AIEE
* Brevard Engineering College	Canaveral	3	29	(SA) IRE
Bridgeport, University of	Connecticut	1	20	IRE-AIEE
** Brigham Young University	Salt Lake City	7	38	IRE-AIEE
* British Columbia Vocational School	Vancouver	8	40	(SA) IRE
British Columbia, University of	Vancouver	8	121	IRE-AIEE
Bronx Community College	New York	2)	50	(SA) IRE
* Bronx Community College (Evening Division)	New York	2)		(SA) IRE
Brooklyn, Polytechnic Insti- tute of (Day Division)	New York	2)	244	IRE-AIEE
Brooklyn, Polytechnic Insti- tute of (Evening Division)	New York	2)		IRE-AIEE
Broome Technical Community College	Binghamton	1	34	(SA) IRE
Brown University	Boston	1	12	IRE-AIEE
Bucknell University	Williamsport	4	9	IRE-AIEE
Buenos Aires, University of	Buenos Aires	-	99	IRE
California Institute of Technology	Los Angeles	7	41	IRE-AIEE
California State Polytechnic College (San Luis Obispo)	Los Angeles	7	147	IRE
California State Polytechnic College (Kellogg-Voorhis Campus)	Los Angeles	7	104	IRE
California, University of (Berkeley)	San Francisco	7	210	IRE-AIEE
Capitol Radio Engineering Institute	Washington	3	134	(SA) IRE
Carnegie Institute of Technology	Pittsburgh	4	58	IRE-AIEE
Case Institute of Technology	Cleveland	4	73	IRE-AIEE
Catholic University of America	Washington	3	8	IRE-AIEE
Central Technical Institute	Kansas City	6	86	(SA) IRE

School	Section Location	Region	Membership	Branch
Christian Brothers College	Huntsville	3	33	IRE
Cincinnati, Univ. of	Cincinnati	4	34	IRE-AIEE
Clarkson College of Technology	Syracuse	1	42	IRE-AIEE
Clemson College	South Carolina	3	27	IRE-AIEE
Colorado State University	Denver	6	42	IRE-AIEE
Colorado, Univ. of	Denver	6	116	IRE-AIEE
Columbia University	New York	2	86	IRE-AIEE
Connecticut, Univ. of	Connecticut	1	53	IRE-AIEE
The Cooper Union	New York	2	54	IRE-AIEE
Cornell University	Ithaca	1	102	IRE-AIEE
*** Dayton, Univ. of	Dayton	4	86	IRE
Dayton, University of Technical Institute	Dayton	4	16	(SA)-IRE
Delaware, Univ. of	Philadelphia	3	36	IRE-AIEE
Denver, University of	Denver	6	23	IRE-AIEE
Detroit, University of	Detroit	4	22	IRE-AIEE
DeVry Technical Institute (Illinois)	Chicago	5	459	(SA) IRE
DeVry Technical Institute of Canada	Toronto	8	35	(SA) IRE
Drexel Institute of Technology	Philadelphia	3	114	IRE-AIEE
Duke University	North Carolina	3	9	IRE-AIEE
Ecole Polytechnique	Montreal	8	14	IRE
Electronic Technical Institute	San Diego	7	28	(SA) IRE
* Essex College, Assumption University of Windsor	London (Canada)	8	22	IRE
* Evansville College	Evansville-Owensboro	5	21	IRE
Fairleigh Dickinson University	Northern New Jersey	2	86	IRE
Fenn College	Cleveland	4	21	IRE
Florida, University of	Gainesville	3	113	IRE-AIEE
Franklin Institute of Boston	Boston	1	75	(SA) IRE
* Fresno State College	San Francisco	7	10	IRE-AIEE
* Gannon College	Erie	1	4	IRE-AIEE
* Gaston Technical Institute	North Carolina	3	26	(SA)-IRE
George Washington University	Washington	3	55	IRE-AIEE
Georgia Institute of Technology	Atlanta	3	88	IRE
* The Hamilton Institute of Technology	Hamilton	8	35	(SA)-IRE
* University of Hartford (Hillyer College)	Connecticut	1	21	IRE
* University of Hawaii	Hawaii	7	35	IRE
Heald Engineering College	San Francisco	7	49	(SA) IRE
Hofstra College	Long Island	2	38	IRE
Houston, University of (College of Engineering)	Houston	6	40	IRE-AIEE
Houston, University of (College of Technology)	Houston	6	19	(SA) IRE
Howard University	Washington	3	25	IRE-AIEE
* Hudson Valley Community College	Schenectady	1	48	(SA)-IRE
Idaho, University of	Seattle	7	36	IRE-AIEE
Illinois Institute of Technology	Chicago	5	70	IRE
Illinois, University of Urbana	Chicago	5	176	IRE-AIEE
Illinois, University of	Chicago	5	18	(SA) IRE
* Indiana Technical College	Fort Wayne	5	44	IRE-AIEE
Iowa, State Univ. of	Cedar Rapids	5	60	IRE
Iowa, State Univ. of Science & Technology	Cedar Rapids	5	118	IRE-AIEE
John Carroll Univ.	Cleveland	4	60	IRE
The Johns Hopkins University	Baltimore	3	60	IRE-AIEE
Kansas State University of Agriculture & Applied Science	Kansas City	6	50	IRE

School	Section Location	Region	Membership	Branch
Kansas, University of	Kansas City	6	43	IRE-AIEE
Kentucky, University of	Louisville	5	48	IRE
Lafayette College	Philadelphia	3	44	IRE-AIEE
Lamar State College of Technology	Beaumont-Port Arthur	6	48	IRE-AIEE
La Salle College	Philadelphia	3	47	IRE
Laval University	Montreal	8	48	IRE-AIEE
*Lawrence Institute of Technology	Detroit	4	32	(SA)-IRE
Lehigh University	Philadelphia	3	67	IRE-AIEE
Long Beach State College	Los Angeles	7	30	IRE
Los Angeles State College of Applied Art & Sciences	Los Angeles	7	43	IRE
Louisiana Polytechnic Institute	Shreveport	6	16	IRE-AIEE
Louisiana State University	New Orleans	6	33	IRE-AIEE
Louisville, Univ. of	Louisville	5	26	IRE-AIEE
Lowell Technological Institute	Boston	1	83	IRE
Loyola University	Los Angeles	7	35	IRE
Maine, University of	Boston	1	32	IRE
Manhattan College	New York	2	58	IRE-AIEE
Manitoba, University of	Winnipeg	8	42	IRE
Marquette University	Milwaukee	5	82	IRE-AIEE
Maryland, University of	Washington	3	155	IRE-AIEE
Massachusetts Institute of Technology	Boston	1	315	IRE-AIEE
Massachusetts, University of	Western Massachusetts	1	51	IRE-AIEE
Merrimack College	Boston	1	12	IRE-AIEE
Miami, University of	Miami	3	41	IRE
Michigan College of Mining & Technology	Milwaukee	5	45	IRE-AIEE
Michigan State University	Detroit	4	81	IRE-AIEE
Michigan, University of	Detroit	4	121	IRE-AIEE
Milwaukee School of Engineering	Milwaukee	5	107	IRE
Minnesota, University of	Twin Cities	5	104	IRE-AIEE
Mississippi State Univ.	Huntsville	3	116	IRE
* The University of Mississippi	Huntsville	3	21	IRE
Missouri School of Mines & Metallurgy	St. Louis	6	117	IRE-AIEE
Missouri, University of	St. Louis	6	27	IRE-AIEE
Mohawk Valley Technical Institute	Rome-Utica	1	31	(SA) IRE
* Monmouth College	New York	2	33	IRE
Montana State College	Seattle	7	36	IRE-AIEE
Nebraska University of	Omaha-Lincoln	5	66	IRE-AIEE
Nevada, University of	Sacramento	7	14	IRE-AIEE
Newark College of Engineering	Northern New Jersey	2	113	IRE
**** New Bedford Institute of Technology	Boston	1	10	IRE-AIEE
New Hampshire, Univ. of	Boston	1	34	IRE-AIEE
* New Mexico Highlands University	Albuquerque - Los Alamos	7	21	(SA)-IRE
New Mexico State Univ.	El Paso	6	37	IRE-AIEE
New Mexico, Univ. of	Albuquerque-Los Alamos	7	84	IRE-AIEE
New York City Community College	New York	2	71	(SA) IRE
New York, City College of	New York	2	168	IRE
New York Institute of Technology	New York	2	59	(SA) IRE
New York University (Day Division)	New York	2)		IRE
New York University (Eve. Division)	New York	)	165	
	New York	2)		IRE-AIEE

School	Section Location	Region	Membership	Branch
New York State University of, at Alfred	Elmira-Corning	1	115	(SA) IRE
*State University of New York				
Agricultural & Technical Inst.	Syracuse	1	54	(SA)-IRE
North Carolina State College	North Carolina	3	64	IRE-AIEE
North Dakota State College	Twin Cities	5	31	IRE-AIEE
North Dakota, University of	Twin Cities	5	21	IRE-AIEE
Northeastern University	Boston	1	279	IRE-AIEE
Northrop Institute of Technology	Los Angeles	7	102	IRE
Northwestern University	Chicago	5	38	IRE-AIEE
Norwich University	Boston	1	25	IRE-AIEE
Notre Dame, University of	South Bend-Mishawaka	5	19	IRE-AIEE
Ohio Northern University	Toledo	4	12	IRE-AIEE
Ohio State University	Columbus	4	137	IRE-AIEE
Ohio University	Columbus	4	21	IRE-AIEE
Oklahoma State University	Tulsa	6	37	IRE-AIEE
Oklahoma, University of	Oklahoma City	6	59	IRE-AIEE
Oklahoma City University	Oklahoma City	6	9	(SA) IRE
Omaha, Municipal University of	Omaha-Lincoln	5	29	(SA) IRE
Oregon State College	Portland	7	147	IRE
Oregon Technical Institute	Portland	7	26	(SA) IRE
Ottawa, University of	Ottawa	8	28	IRE
* Pacific States University	Los Angeles	7	108	(SA)-IRE
Pennsylvania, University of	Philadelphia	3	82	IRE-AIEE
Pennsylvania State University	Central Pennsylvania	4	170	IRE-AIEE
Pierce College	Los Angeles	7	23	(SA) IRE
Pittsburgh, University of	Pittsburgh	4	87	IRE
Port Arthur College	Beaumont-Port Arthur	6	12	(SA) IRE
Pratt Institute	New York	2	34	IRE-AIEE
Princeton University	Princeton	2	40	IRE-AIEE
Puerto Rico, Univ. of	----	-	6	IRE
Purdue University	Indianapolis	5	249	IRE-AIEE
* Queensborough Community College	Long Island	2	17	(SA)-IRE
* RCA Institutes, Inc.	New York	2	376	(SA)-IRE
* Radio College of Canada	Toronto	8	53	(SA)-IRE
Radio Engineering Institute	Omaha-Lincoln	5	41	(SA) IRE
Rensselaer Polytechnic Institute	Schenectady	1	130	IRE-AIEE
Rhode Island, University of	Boston	1	17	IRE-AIEE
Rice University	Houston	6	37	IRE-AIEE
* Roanoke Technical Institute	Virginia	3	16	(SA)-IRE
Rochester Institute of Technology	Rochester	1	50	(SA) IRE
Rochester, The Univ. of	Rochester	1	34	IRE
Rome, University of	Italy	-	73	IRE
Rose Polytechnic Institute	Indianapolis	5	62	IRE-AIEE
Royal Military College of Canada	Bay of Quinte	8	20	IRE
Rutgers University	Princeton-Section	2	55	IRE-AIEE
Ryerson Institute of Technology	Toronto	8	79	(SA) IRE
St. Joseph's College	Philadelphia	3	17	IRE
St. Louis University	St. Louis	6	8	IRE
San Diego State College	San Diego	7	35	IRE
San Francisco State College	San Francisco	7	23	IRE
San Jose State College	San Francisco	7	49	IRE-AIEE
Santa Clara, University of	San Francisco	7	52	IRE-AIEE
Saskatchewan, University of	Regina	8	48	IRE
Seattle University	Seattle	7	21	IRE-AIEE
Sinclair College	Dayton	4	21	(SA) IRE
South Carolina, University of	South Carolina Section	3	24	IRE-AIEE

School	Section Location	Region	Membership	Branch
South Dakota School of Mines & Technology	Twin Cities	5	24	IRE
South Dakota State College of Agriculture & Mechanic Arts	Twin Cities	5	23	IRE-AIEE
The Southern Alberta Institute of Technology	Southern Alberta	8	171	(SA) IRE
Southern California University of Southern Methodism	Los Angeles	7	71	IRE-AIEE
Southern Technical Institute	Dallas	6	45	IRE-AIEE
Southwest Missouri State University	Atlanta	3	10	(SA) IRE
Southwestern Louisiana, University of	Kansas City	6	26	(SA) IRE
* Spartan School of Aeronautics	New Orleans	6	20	IRE
Stanford University	Tulsa	6	27	(SA)-IRE
Stanford University	San Francisco	7	113	IRE-AIEE
Stevens Institute of Technology	Northern New Jersey	2	32	IRE-AIEE
Swarthmore College	Philadelphia	3	7	IRE-AIEE
Syracuse University	Syracuse	1	40	IRE-AIEE
Tennessee Agricultural & Industrial State University	Huntsville	3	17	IRE
Tennessee, University of	Atlanta	3	46	IRE-AIEE
Texas College of Arts & Industries	San Antonio-Austin	6	22	IRE
Texas, Agricultural & Mechanical of	Houston	6	58	IRE-AIEE
Texas Technological College	Lubbock	6	41	IRE-AIEE
Texas, University of	San Antonio-Austin	6	124	IRE-AIEE
Toledo, University of	Toledo	4	23	IRE-AIEE
Toronto, University of	Toronto	8	51	IRE
Tri-State College	Fort Wayne	5	47	(SA) IRE
Tufts University	Boston	1	17	IRE-AIEE
Tulane University	New Orleans	6	18	IRE-AIEE
Union College	Schenectady	1	16	IRE-AIEE
* Union County Technical Institute	Northern New Jersey	2	35	(SA) - IRE
* Universidad Distrital Francisco Jose de Caldas	Colombia	-	43	IRE
Universidad Tecnica Federico Santa Maria	Chile	-	18	IRE
U. S. Naval Postgraduate School	San Francisco	7	73	IRE
Utah State University	Salt Lake City	7	50	IRE
Utah, University of	Salt Lake City	7	72	IRE-AIEE
Valparaiso Technical Institute	Chicago	5	182	(SA) IRE
** Valparaiso University	Chicago	5	41	IRE-AIEE
Vanderbilt University	Huntsville	3	16	IRE-AIEE
Vermont, University of	Boston	1	18	IRE-AIEE
Villanova University	Philadelphia	3	55	IRE-AIEE
Virginia Polytechnic Institute	Virginia	3	53	IRE-AIEE
Virginia, University of	Virginia	3	31	IRE-AIEE
Voorhees Technical Institute	New York	2	31	(SA) IRE
* Ward School of Electronics	Connecticut	1	29	(SA)-IRE
Washington, University of	Seattle	7	121	IRE-AIEE
Washington State Univ.	Seattle	7	39	IRE-AIEE
Washington University	St. Louis	6	37	IRE-AIEE
* The University of Waterloo	Kitchener-Waterloo	8	37	IRE
Wayne State University	Detroit	4	89	IRE-AIEE
Wentworth Institute	Boston	1	81	(SA) IRE
Western Michigan University	Western Michigan	4	30	IRE
* The Western Ontario Institute of Technology	London (Canada)	8	7	(SA)-IRE
Western Ontario, University of	London	8	32	IRE
West Virginia Institute of Technology	Pittsburgh	4	15	(SA) IRE
West Virginia Univ.	Pittsburgh	4	19	IRE-AIEE

